

Specifications

±4,500 SF

TOTAL BUILDING SIZE

**Ample Room for Workshops, Storage
or Additional Offices**

LAYOUT

**Construction, Electrical, Plumbing
Industries**

IDEAL USES

±0.07 AC (Block 77, Lot 10)

LOT SIZE

±10'

CEILING HEIGHT

2 Offices, 2 Bathrooms
ROOMS

R-1C

ZONING

\$9,692.79

TAXES (2025)

\$850,000

SALE PRICE

\$15 PSF NNN

LEASE RATE

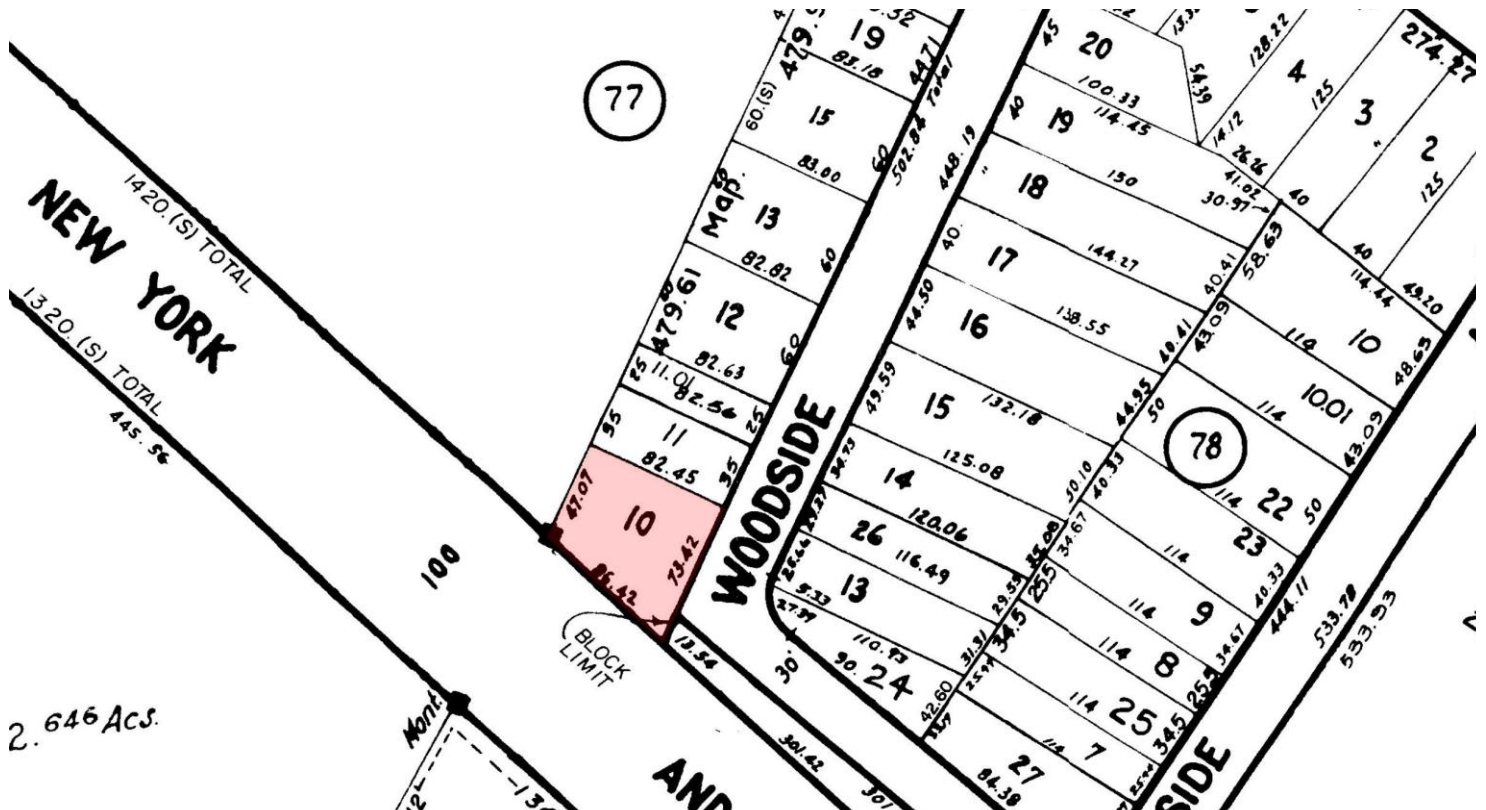
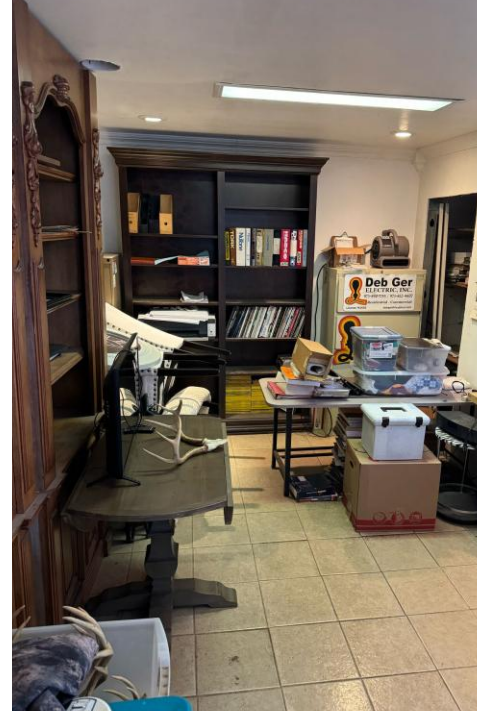
For additional property information or to arrange an inspection, please contact the exclusive brokers:

Jason M. Crimmins, CCIM, SIOR
President
973.568.6611
jmcrimmins@blauberg.com

Alessandro (Alex) Conte, CCIM, SIOR
Executive Vice President
973.432.1648
aconte@blauberg.com

Peter J. Murano, Jr., SIOR
Managing Executive Director
973.214.9375
pjmurano@blauberg.com

FOR SALE OR LEASE | 24 WOODSIDE AVENUE | LITTLE FALLS, NJ



For additional property information or to arrange an inspection, please contact the exclusive brokers:

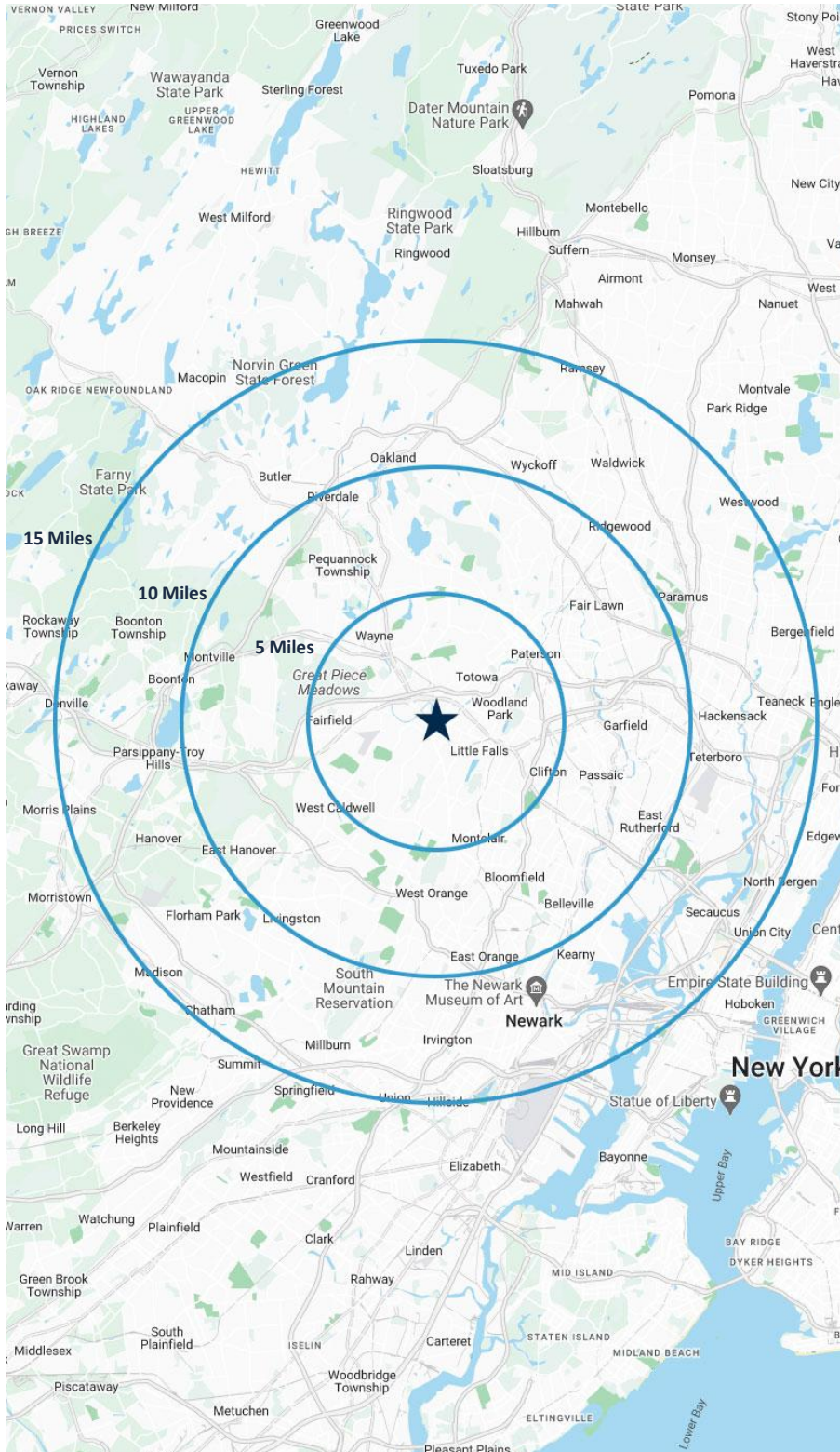
Jason M. Crimmins, CCIM, SIOR
President
973.568.6611
jmcrimmins@blauberg.com

Alessandro (Alex) Conte, CCIM, SIOR
Executive Vice President
973.432.1648
aconte@blauberg.com

Peter J. Murano, Jr., SIOR
Managing Executive Director
973.214.9375
pjmurano@blauberg.com

The information contained herein has been obtained from sources considered to be reliable, but no guarantee of its accuracy is made by this company. In addition, no representation is made respecting zoning, condition of title, dimensions, or any matters of a legal or environmental nature. Such matters should be referred to legal counsel for determination. Terms and conditions are subject to change without prior notice. Subject to errors and omissions.





5 MILES

- Total Population: 362,858
- Households: 128,965
- Median Household Income: \$120,480
- Average Household Size: 2.7
- Transportation to Work: 190,662
- Labor Force: 289,835

10 MILES

- Total Population: 1.58M
- Households: 575,764
- Median Household Income: \$114,764
- Average Household Size: 2.7
- Transportation to Work: 840,591
- Labor Force: 1.27M

15 MILES

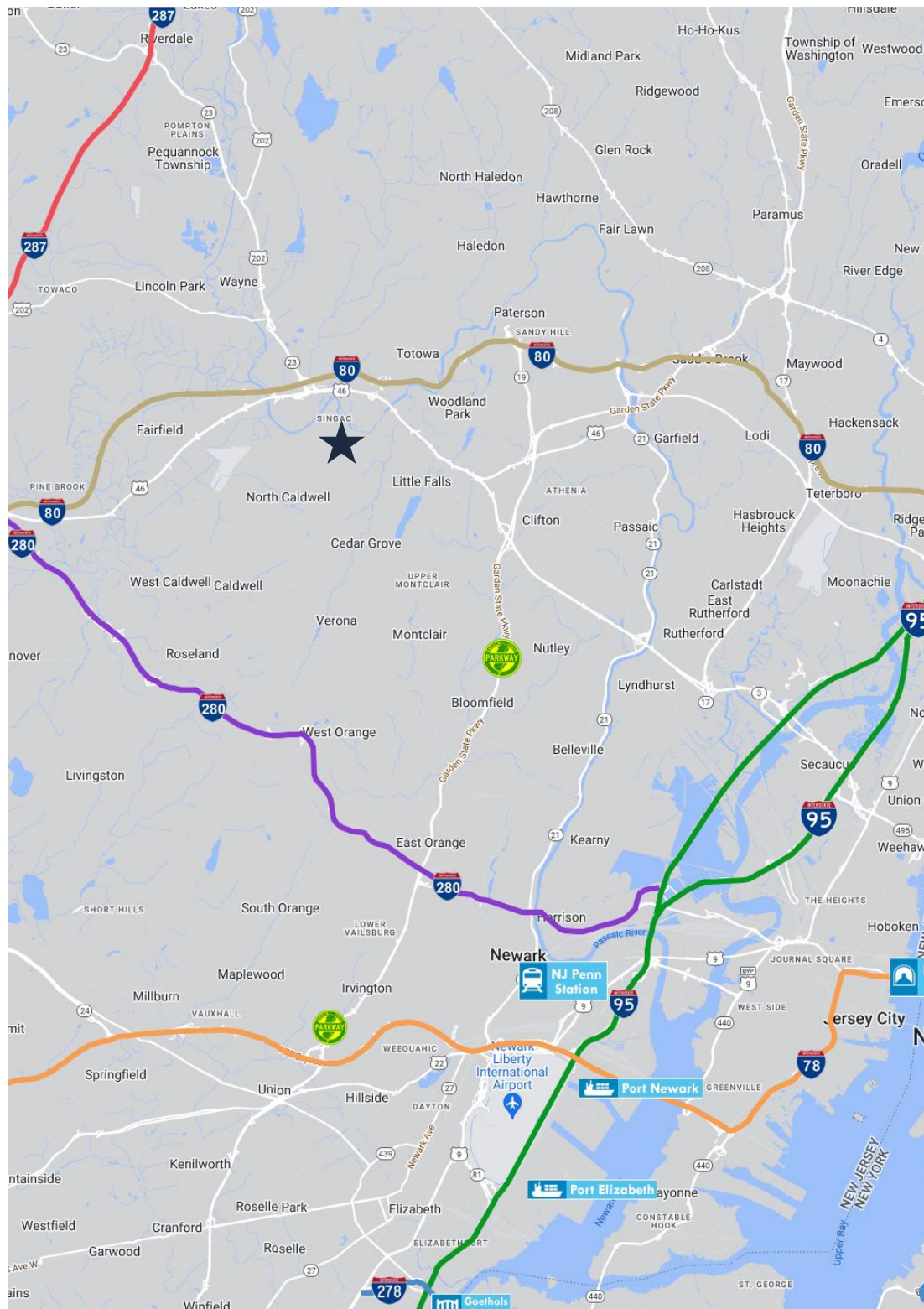
- Total Population: 3.38M
- Households: 1.26M
- Median Household Income: \$117,816
- Average Household Size: 2.6
- Transportation to Work: 1.84M
- Labor Force: 2.74M

For additional property information or to arrange an inspection, please contact the exclusive brokers:

Jason M. Crimmins, CCIM, SIOR
President
973.568.6611
jmcrimmins@blauberg.com

Alessandro (Alex) Conte, CCIM, SIOR
Executive Vice President
973.432.1648
aconte@blauberg.com

Peter J. Murano, Jr., SIOR
Managing Executive Director
973.214.9375
pjmurano@blauberg.com



ACCESSIBILITY



0.4 MI
Route 23



1.0 MI
Route 46



1.6 MI
I-80



3.6 MI
Route 3



5.2 MI
GSP Exit 153



6.8 MI
I-280 Exit 8

For additional property information or to arrange an inspection, please contact the exclusive brokers:

Jason M. Crimmins, CCIM, SIOR
President
973.568.6611
jmcrimmins@blauberg.com

Alessandro (Alex) Conte, CCIM, SIOR
Executive Vice President
973.432.1648
aconte@blauberg.com

Peter J. Murano, Jr., SIOR
Managing Executive Director
973.214.9375
pjmurano@blauberg.com