

# NEW SUBLEASE OPPORTUNITY

25360 Crenshaw Blvd, Torrance, CA 90505



# PROPERTY SUMMARY

25360 Crenshaw Blvd, Torrance, CA 90505

Size:	±1,500 SF
Asking Rent:	\$5.50 PSF NNN
Lease Term:	~3 yr remaining + one (1) five-year option
FF&E:	Negotiable

Rolling Hills Plaza is a premier mixed-use retail and entertainment destination totaling nearly 500,000 square feet and home to over 80 retailers and restaurants. The center features a curated tenant mix anchored by Whole Foods, Trader Joe's, Nijiya Japanese Market, AMC Theatre 20, and 24 Hour Fitness, complemented by national brands such as Nike, Sephora, BevMo, and Tilly's.

The plaza offers a true one-stop lifestyle experience, with a strong lineup of quick-serve and full-service restaurants including California Pizza Kitchen, Islands, Stonefire Grill, Starbucks, and Peet's Coffee. Strategically positioned at the base of the Palos Verdes Peninsula at the intersection of PCH and Crenshaw Boulevard, Rolling Hills Plaza benefits from outstanding traffic counts and access to some of the most affluent residential communities in the South Bay.



TRADER JOE'S BevMo!



AMC  
THEATRES



COMMERCIAL  
BROKERAGE • INVESTMENT • DEVELOPMENT



Chris Gentzkow

(562) 472-6936 • Chris@duhscommercial.com • DRE: 01255097

No warranty or representation is made to the accuracy of the foregoing information. Terms of sale or lease and availability are subject to change or withdrawal without notice.

# AERIAL

25360 Crenshaw Blvd, Torrance, CA 90505



**Retail Opportunity**

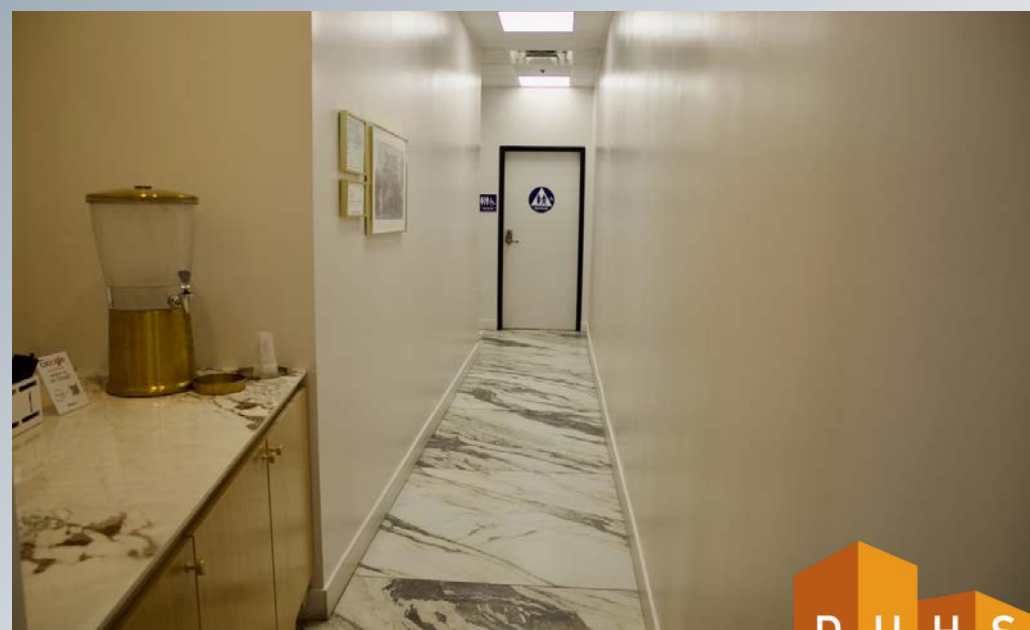
Chris Gentzkow

(562) 472-6936 · Chris@duhscommercial.com · DRE: 01255097

No warranty or representation is made to the accuracy of the foregoing information. Terms of sale or lease and availability are subject to change or withdrawal without notice.

## INTERIOR PHOTOS

**25360 Crenshaw Blvd, Torrance, CA 90505**



Chris Gentzkow

(562) 472-6936 · Chris@duhscommercial.com · DRE: 01255097



COMMERCIAL  
BROKERAGE • INVESTMENT • DEVELOPMENT



# KITCHEN PHOTOS

25360 Crenshaw Blvd, Torrance, CA 90505



COMMERCIAL  
BROKERAGE • INVESTMENT • DEVELOPMENT

SITE SOURCE  
REAL ESTATE SERVICES

Chris Gentzkow

(562) 472-6936 • Chris@duhscommercial.com • DRE: 01255097

No warranty or representation is made to the accuracy of the foregoing information. Terms of sale or lease and availability are subject to change or withdrawal without notice.