

ELWOOD INDUSTRIAL PARK



INDUSTRIAL FOR LEASE

4202 E ELWOOD ST | PHOENIX | ARIZONA | 85040

FOR MORE INFORMATION,
PLEASE CONTACT:

THE LEROY BREINHOLT TEAM

CORY SPOSI

D 480.621.4025

M 480.586.1195

csposi@cpiaz.com

DAVID BEAN

D 480.214.1105

M 480.299.5964

dbean@cpiaz.com

COMMERCIAL PROPERTIES INC.

2323 W University Dr

Tempe, AZ, 85281

www.cpiaz.com

PROPERTY FEATURES

- ±127,875 SF – Multi-Tenant Industrial Park
- Centralized location with easy access to I-10, SR-143, & Sky Harbor International Airport
- Fully Sprinklered
- EVAP Cooled Warehouses
- 200-400A, 120/208V Power
- Some Unit Have Access to Truckwell
- Frontage on E Elwood St



The information contained herein has been obtained from various sources. We have no reason to doubt its accuracy; however, J & J Commercial Properties, Inc. has not verified such information and makes no guarantee, warranty or representation about such information. The prospective buyer or lessee should independently verify all dimensions, specifications, floor plans, and all information prior to the lease or purchase of the property. All offerings are subject to prior sale, lease, or withdrawal from the market without prior notice.

03 20 26



ELWOOD INDUSTRIAL PARK

SITE PLAN

UNDER NEW OWNERSHIP



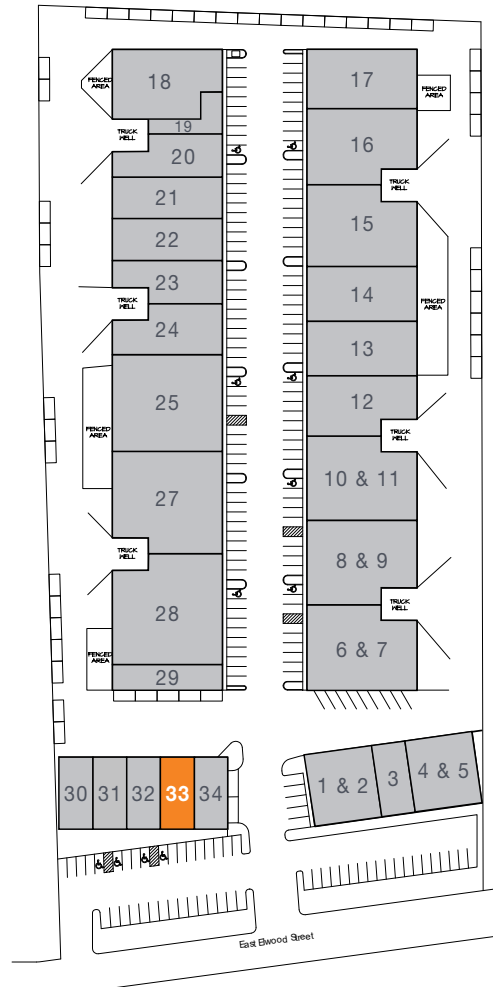
SE Building - ±10,145 SF
Suites 1 - 5

NE Building - ±50,436 SF
Suites 6 - 17

NW Building - ±56,659 SF
Suites 18 - 29

SW Building - ±10,635 SF
Suites 30 - 34

■ AVAILABLE ■ OCCUPIED



AVAILABILITIES

| SUITE | SF | OFFICE % | OFFICE LAYOUT |
|-------|--------|----------|--|
| 33 | ±2,045 | 50% | Reception, 3 Offices, Bullpen, Break Room, Restroom, (1) GL Door |

FOR MORE INFORMATION, PLEASE CONTACT:

**THE LEROY
BREINHOLT
TEAM**

CORY SPOSI
D 480.621.4025
M 480.586.1195
csposi@cpiaz.com

DAVID BEAN
D 480.214.1105
M 480.299.5964
dbean@cpiaz.com



COMMERCIAL PROPERTIES INC.

Locally Owned. Globally Connected. CORFAC

TEMPE: 2323 W University Drive, Tempe, AZ 85281 | 480.966.2301
SCOTTSDALE: 8767 E Via de Commercio, Suite 101, Scottsdale, AZ 85258 | www.cpiaz.com

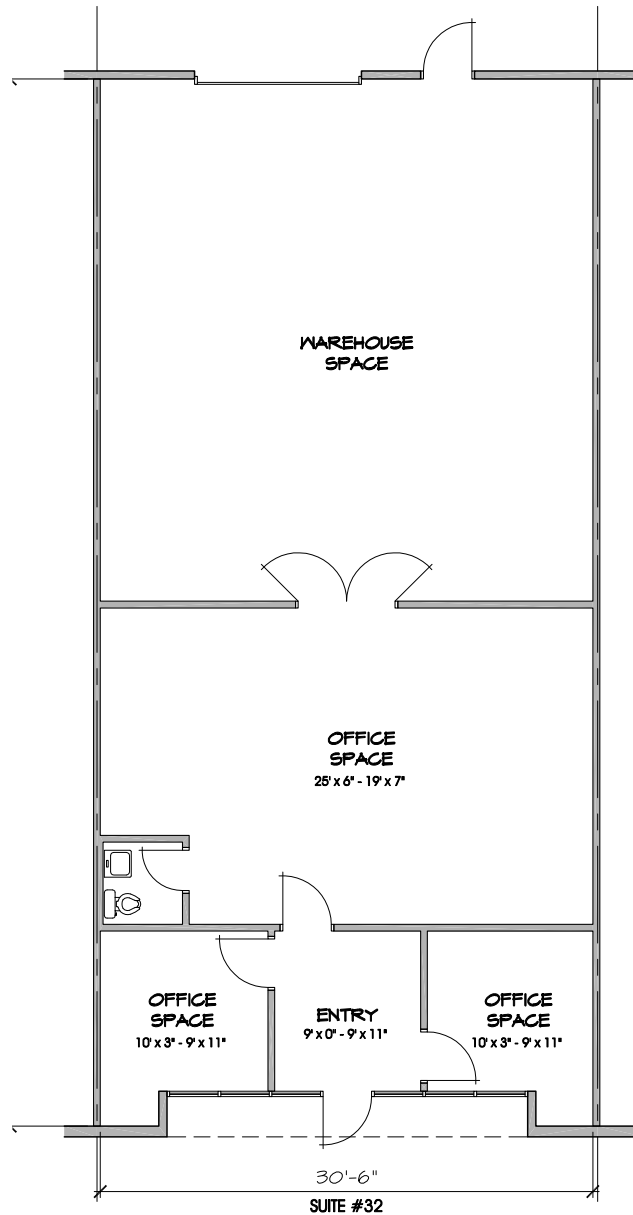
The information contained herein has been obtained from various sources. We have no reason to doubt its accuracy; however, J & J Commercial Properties, Inc. has not verified such information and makes no guarantee, warranty or representation about such information. The prospective buyer or lessee should independently verify all dimensions, specifications, floor plans, and all information prior to the lease or purchase of the property. All offerings are subject to prior sale, lease, or withdrawal from the market without prior notice.

03 20 26

ELWOOD INDUSTRIAL PARK

SUITE 33 (±2,045 SF)

UNDER NEW OWNERSHIP



FOR MORE INFORMATION

THE LEROY BREINHOLT TEAM

CORY SPOSI

D 480.621.4025

M 480.586.1195

csposi@cpiaz.com

DAVID BEAN

D 480.214.1105

M 480.299.5964

dbean@cpiaz.com

COMMERCIAL PROPERTIES INC.

2323 W University Dr

Tempe, AZ, 85281

www.cpiaz.com

ELWOOD INDUSTRIAL PARK

4202 E ELWOOD ST

PHOENIX, AZ 85040



The information contained herein has been obtained from various sources. We have no reason to doubt its accuracy; however, J & J Commercial Properties, Inc. has not verified such information and makes no guarantee, warranty or representation about such information. The prospective buyer or lessee should independently verify all dimensions, specifications, floor plans, and all information prior to the lease or purchase of the property. All offerings are subject to prior sale, lease, or withdrawal from the market without prior notice.

03 20 26

ELWOOD INDUSTRIAL PARK

AMENITIES & IMPROVEMENTS

UNDER NEW OWNERSHIP



NEARBY AMENITIES

- Sky Harbor International Airport
- Arizona State University
- Close to Downtown Phoenix
- Easy Access to I-10 Freeway

FOR MORE INFORMATION

THE LEROY BREINHOLT TEAM

CORY SPOSI

D 480.621.4025

M 480.586.1195

csposi@cpiaz.com

DAVID BEAN

D 480.214.1105

M 480.299.5964

dbean@cpiaz.com

COMMERCIAL PROPERTIES INC.

2323 W University Dr

Tempe, AZ, 85281

www.cpiaz.com

ELWOOD INDUSTRIAL PARK

4202 E ELWOOD ST

PHOENIX, AZ 85040



NEARBY AMENITIES