

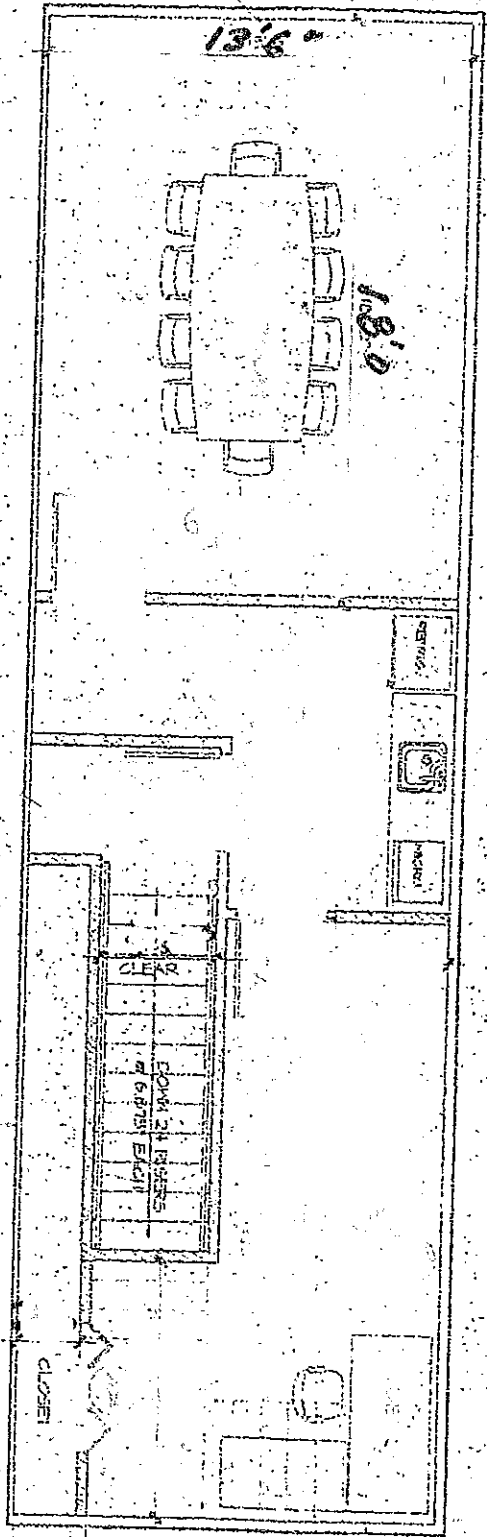
For Lease - Ed Garvin & Co.
 7203 Hodgson Memorial Drive, Suite B
 2,420 sq. ft. Call Ed Garvin (912) 657-8379

(BUSINESS OCCUPANCY)

60'4"

56'2"

35'8"



EXISTING UNFINISHED SECOND FLOOR

48'4"

18'6"