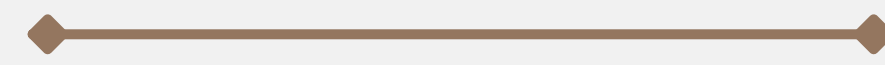




Turnkey Restaurant

3107 Beverly Blvd
Los Angeles, CA



URBANLIME REAL ESTATE



Location

Historic Filipinotown

Historic Filipinotown is situated just west of downtown Los Angeles and is bordered by the neighborhoods of Echo Park, Westlake, and Silver Lake. Known for its vibrant arts and cultural scene, the neighborhood is home to numerous art galleries, theaters, and performance spaces.

Space details



Specs:

- Fully built-out kitchen delivered with all equipment
- New lease with tenant
- Natural light throughout the entire building
- Open floor plan
- No key money
- Big parking lot after business hours and on weekends



Asking:

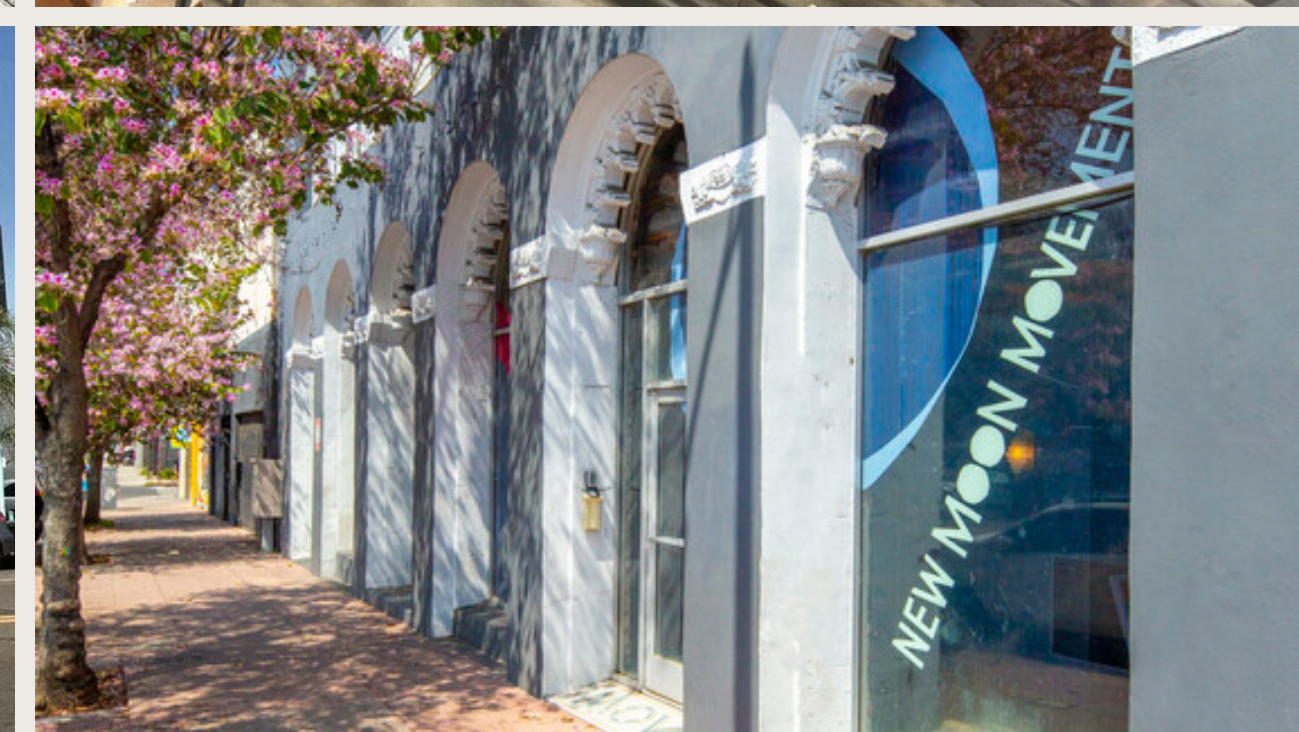
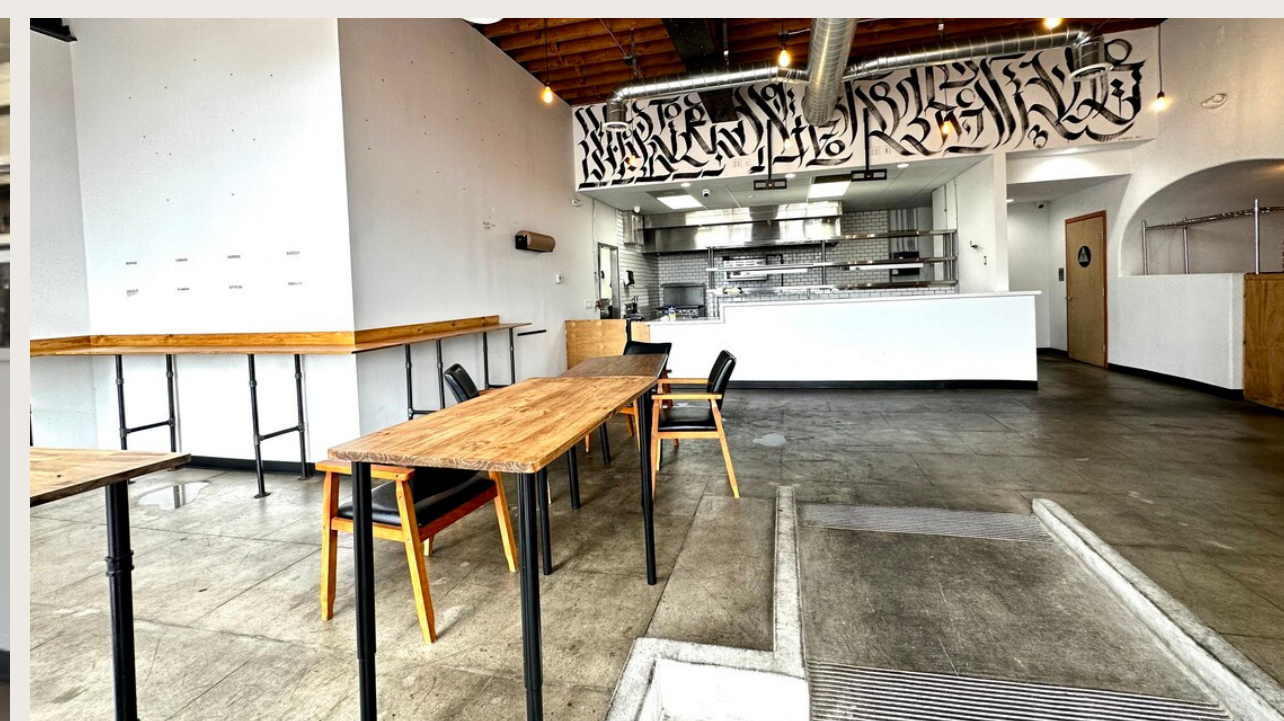
\$5,200 / Month + NNNs (approx. \$971 per month)



Size

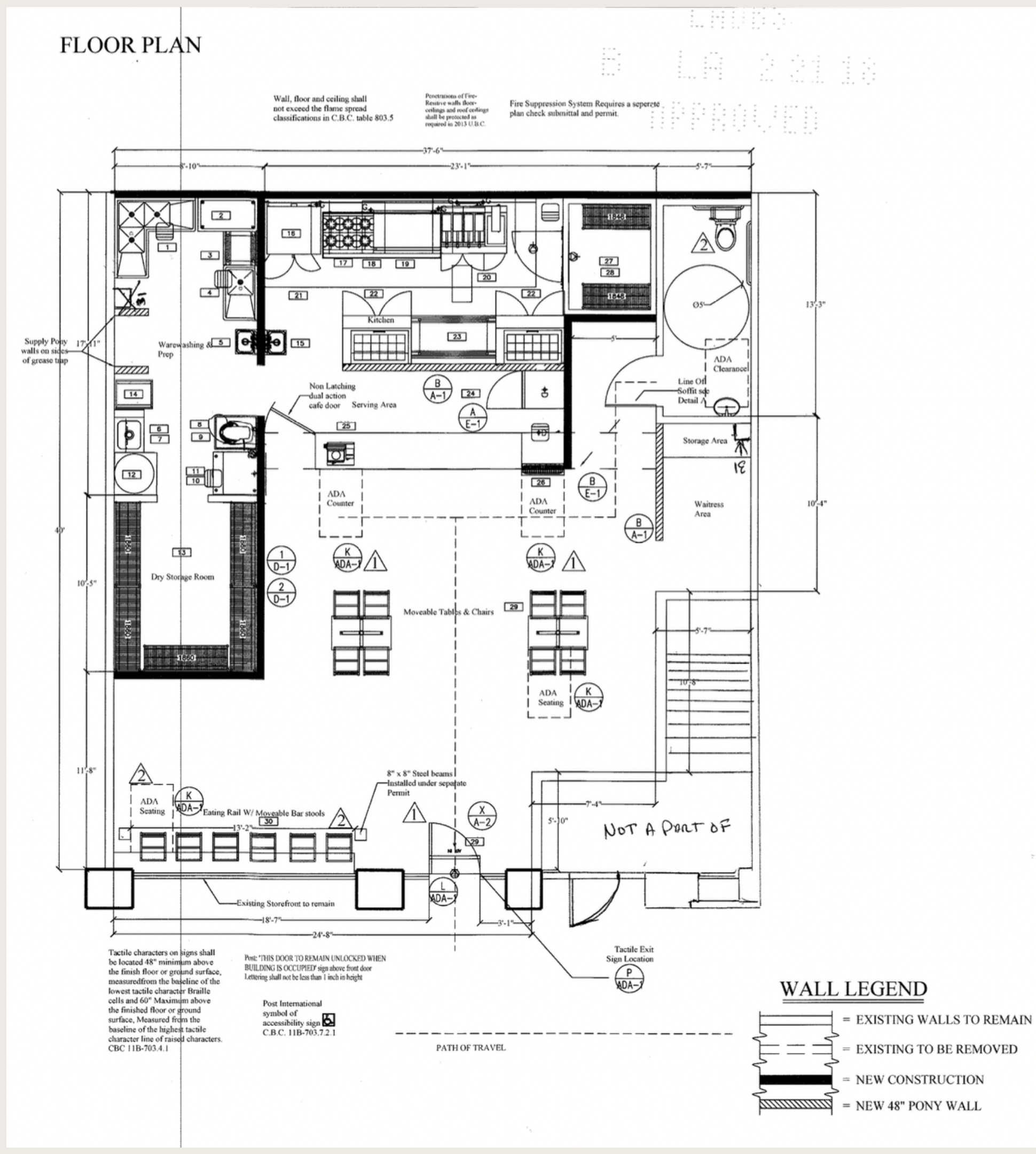
Size: 1,500 SF





Floorplan

- All improvements are up to code
- 2021 construction
- 200 amps
- Can be combined with rear flex space (additional 7,200 sf)



Neighboring Tenants



porridge + puffs



Crawfords



Contact Us



Lorena Tomb

213.277.7247 x1
Lorena@urbanlimere.com
BRE # 01894475

Julie Chavez

213.277.7247 x6
Julie@urbanlimere.com
BRE # 02053293

www.urbanlimere.com

