

FOR SALE

# 3000 CALIFORNIA

San Francisco, CA

**6,115 SQ FT MEDICAL OFFICE BUILDING WITH PARKING | PACIFIC HEIGHTS NEIGHBORHOOD**

**TOM CHRISTIAN**

+1 415 509 8875

[tom.christian@cushwake.com](mailto:tom.christian@cushwake.com)

CA LIC #00890910

**TIM GARLICK**

+1 415 596 8887

[tim.garlick@cushwake.com](mailto:tim.garlick@cushwake.com)

CA LIC #01715903



# SUMMARY

3000 California Street is a rarely available medical office building with parking in the prestigious Pacific Heights neighborhood in San Francisco. The property is in close proximity to Laurel Village, the Fillmore Shopping District, Alta Plaza Park and The Presidio.



# PROPERTY HIGHLIGHTS

## ADDRESS

3000 California Street (California & Baker Streets),  
San Francisco, CA

## BUILDING SQUARE FOOTAGE

- Ground Floor  
Parking: 9 Stalls with 1 Handicap
- 2nd Floor: ±2,865 SF
- 3rd Floor: ±3,250 SF

## PARCEL SIZE

±7,308 SF

## ASSESSOR PARCEL NUMBER

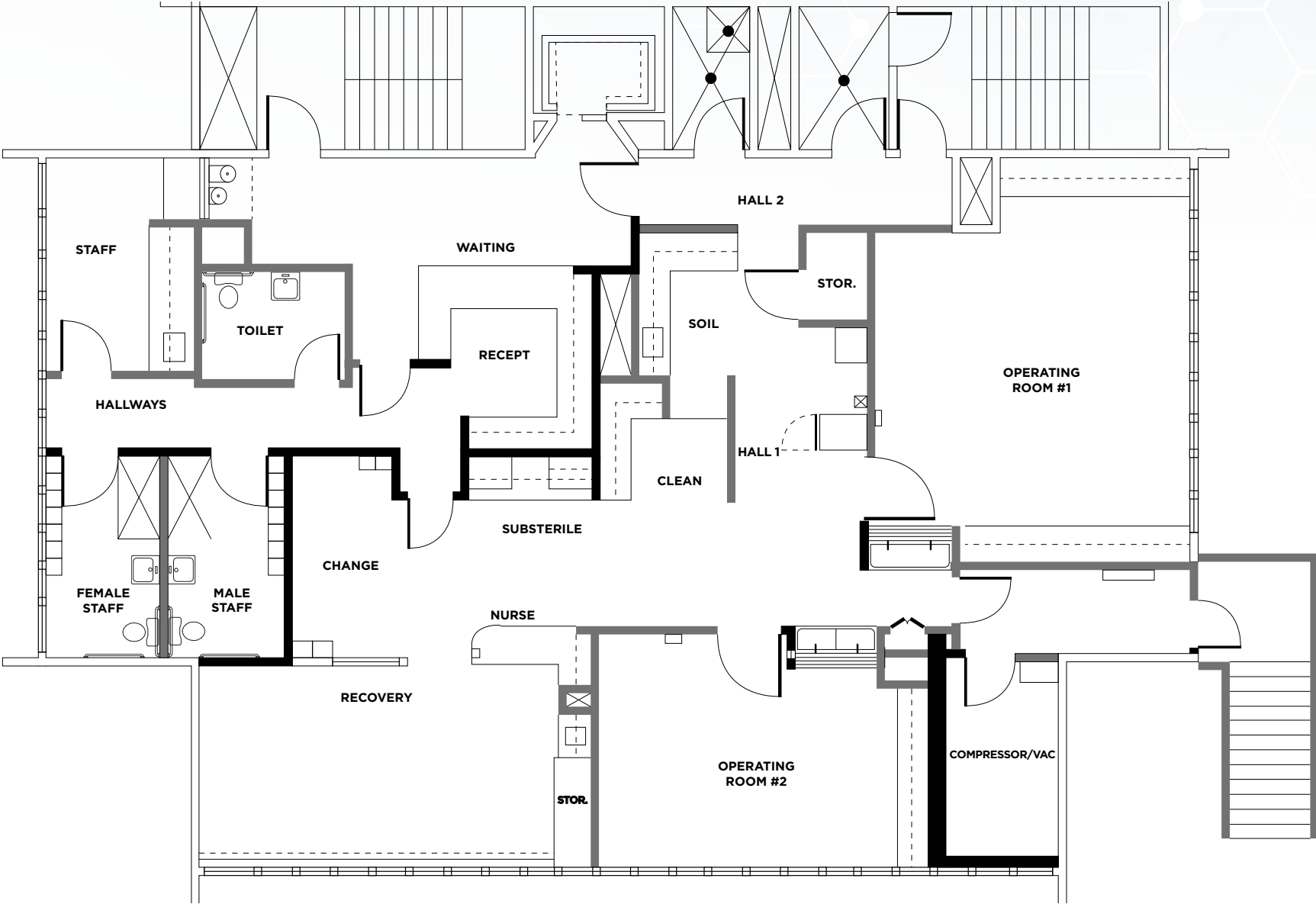
APN #1023-008

## ZONING

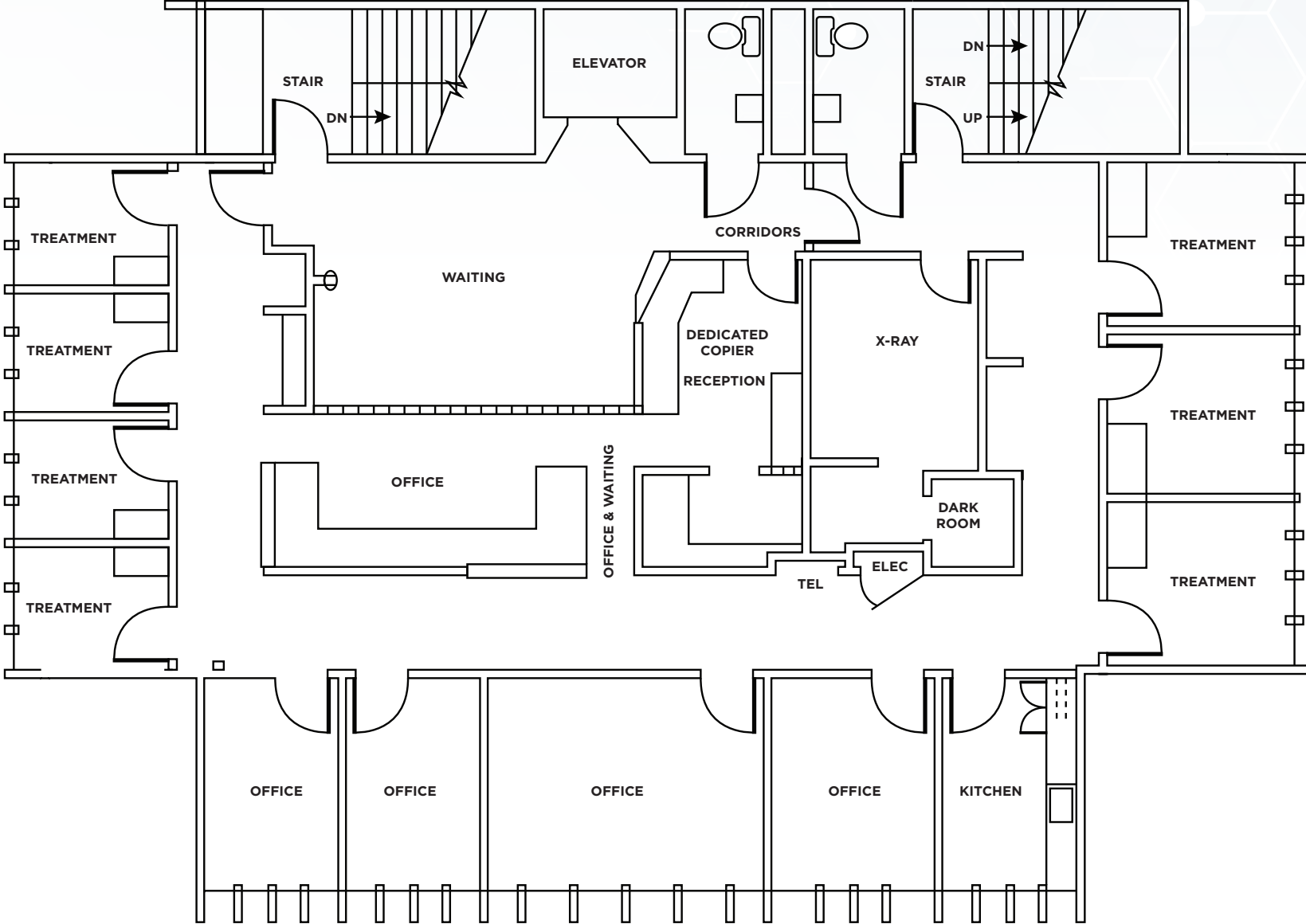
RH-2 (Residential, House)



# SECOND FLOOR PLAN



# THIRD FLOOR PLAN



# RENDERINGS



# APN MAP 1023-008



# SOUTH VIEW



WEBSTER

FILLMORE

MARINA BLVD

SCOTT

DIVISADERO

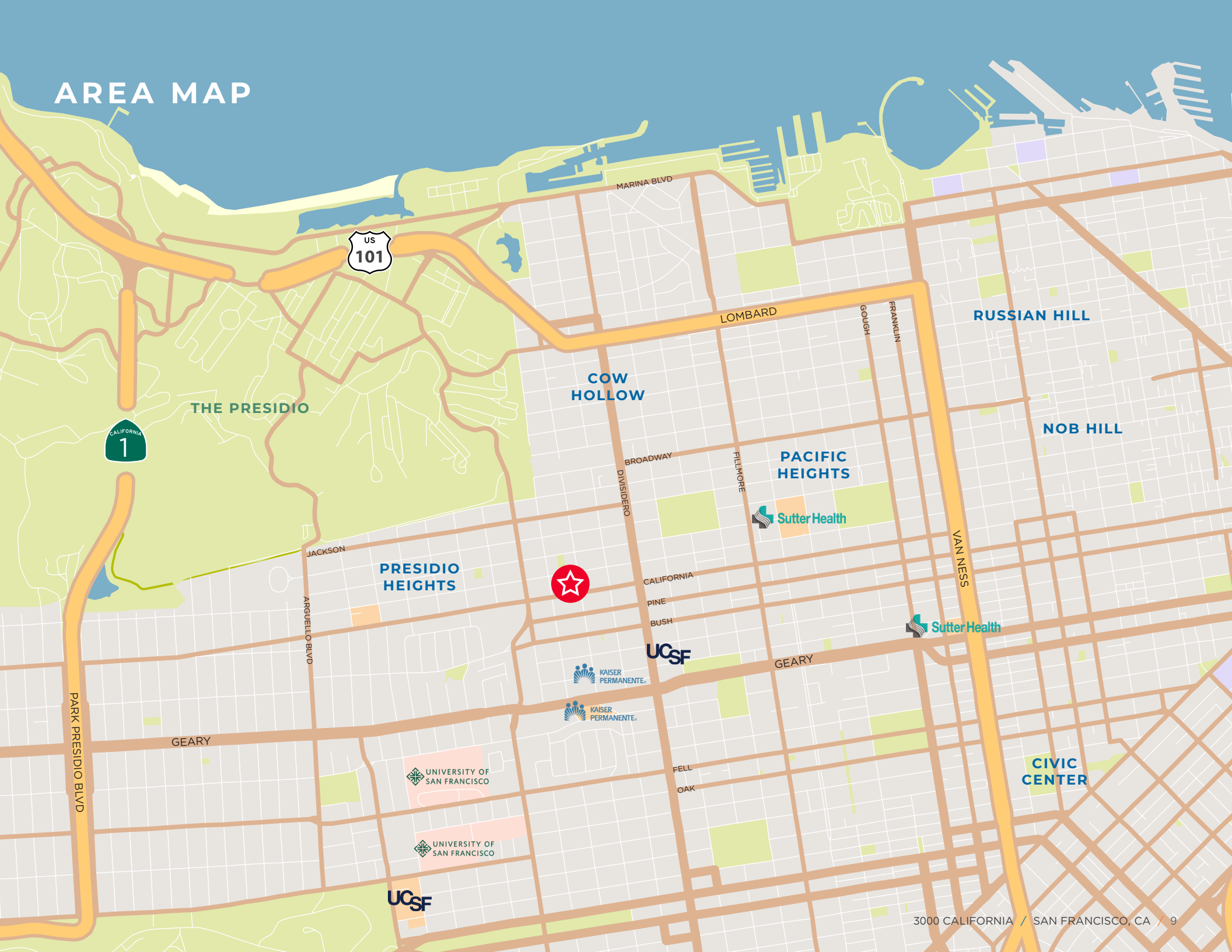
BRODERICK

BAKER

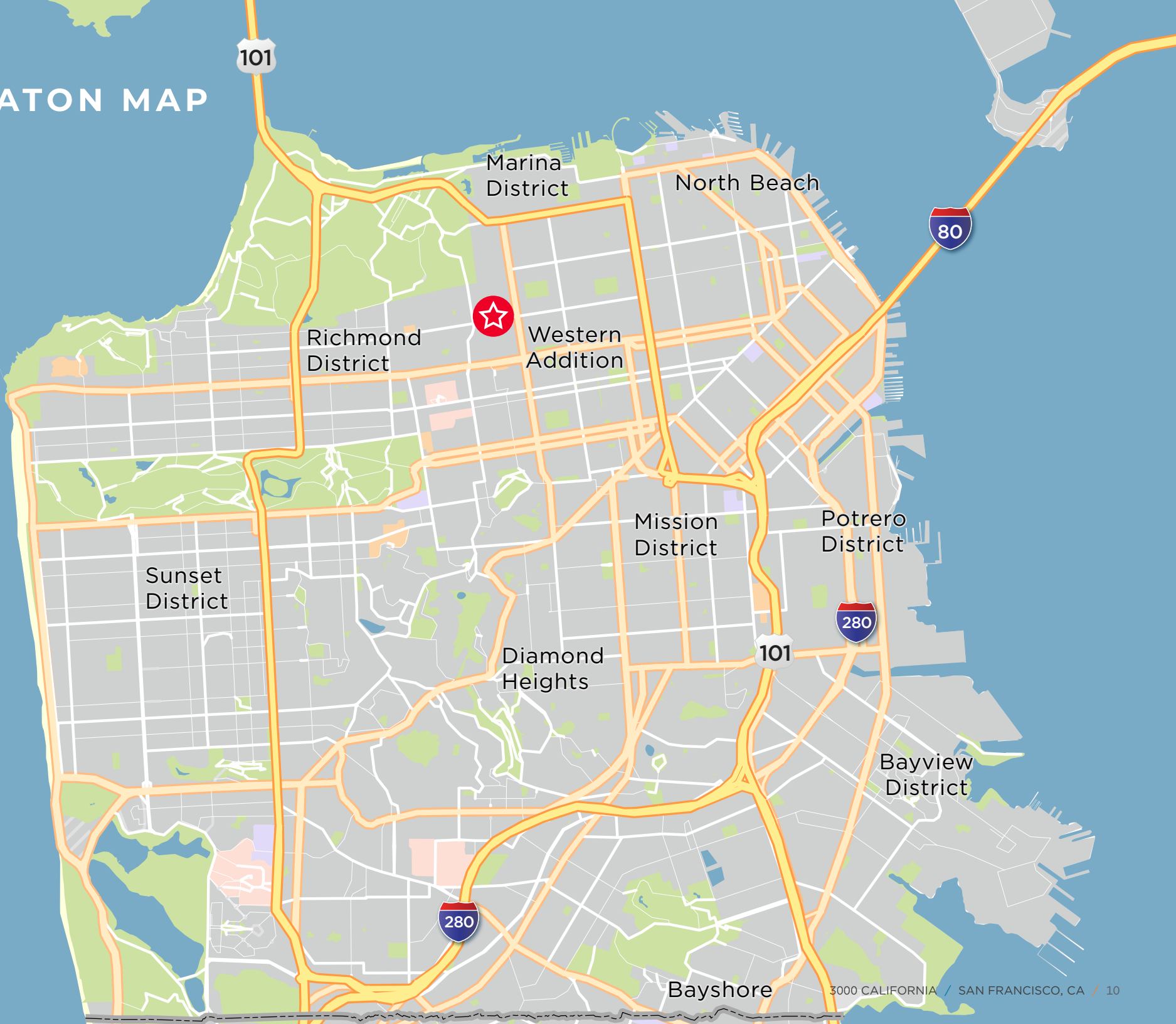




# AREA MAP



# LOCATON MAP





**TOM CHRISTIAN**

+1 415 509 8875

[tom.christian@cushwake.com](mailto:tom.christian@cushwake.com)

CA LIC #00890910

**TIM GARLICK**

+1 415 596 8887

[tim.garlick@cushwake.com](mailto:tim.garlick@cushwake.com)

CA LIC #01715903

