

FOR LEASE

# 660-B S ANDERSON ST

## *6,273 SF Industrial Building for Lease in LA*

Vacant and ready for immediate occupancy

Adjacent to the 6th street viaduct

Turnkey creative space for lease

Former, fully restored and improved

Ideal for creative uses including office / showroom / design

Exposed bow-truss ceilings and polished concrete floors

Fire sprinklers, sky lights, and an automatic roll-up door

*Exclusively listed by*

**THOMAS HOLLAND**, CCIM, CPM, SIOR

323.270.8456

tom.holland@kidder.com

LIC N° 01186709

**KIDDER.COM**

This information supplied herein is from sources we deem reliable. It is provided without any representation, warranty, or guarantee, expressed or implied as to its accuracy. Prospective Buyer or Tenant should conduct an independent investigation and verification of all matters deemed to be material, including, but not limited to, statements of income and expenses. Consult your attorney, accountant, or other professional advisor.

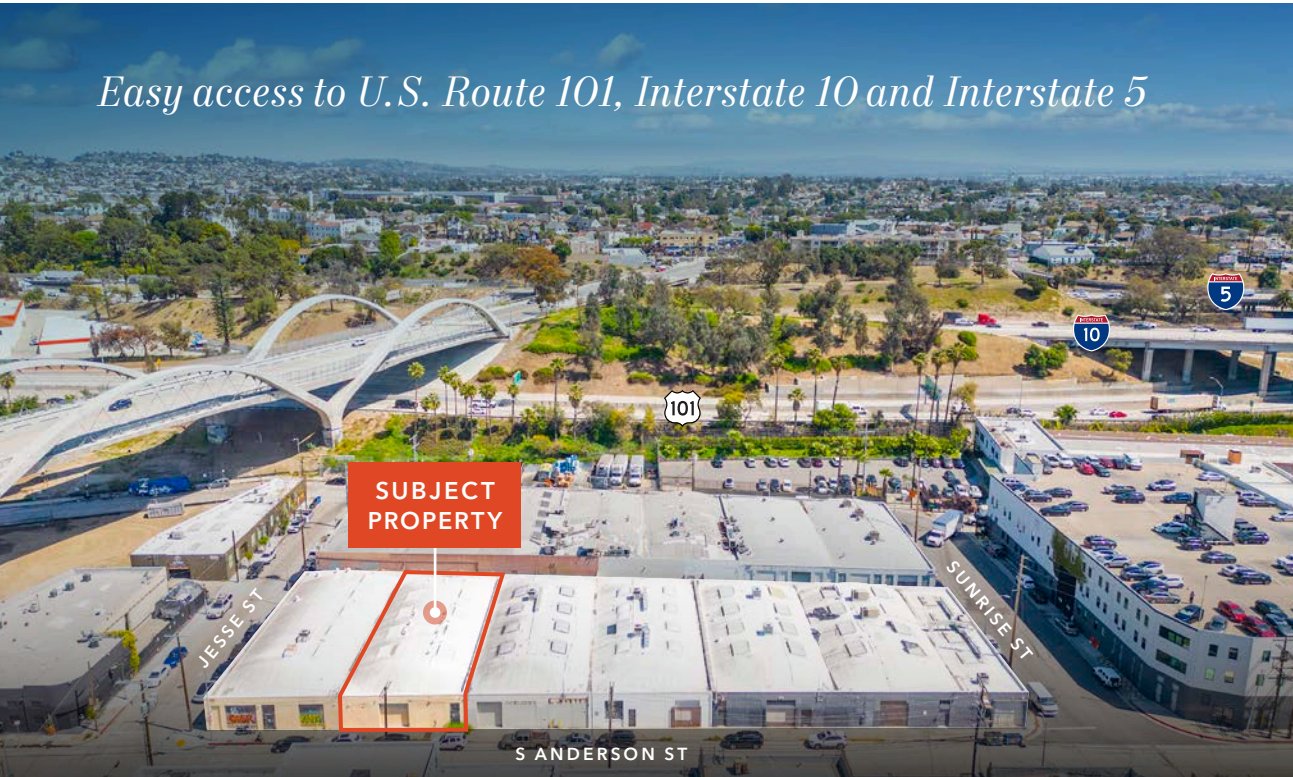
660 S ANDERSON ST  
LOS ANGELES, CA 90023



**SUBJECT  
PROPERTY**

**km** Kidder  
Mathews

*Easy access to U.S. Route 101, Interstate 10 and Interstate 5*



### HIGHLIGHTS

6,273 SF industrial building

12' clear height

Sprinklered

1 ground level door (10' x 10')

Street parking available

1 unisex restroom

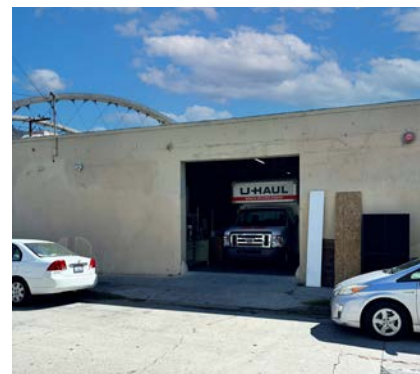
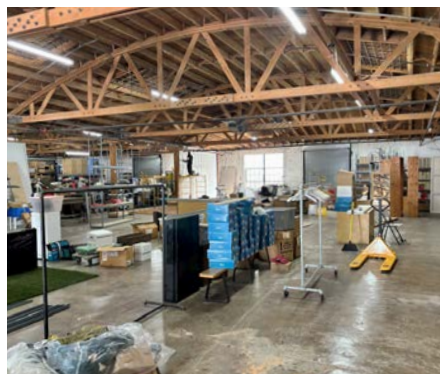
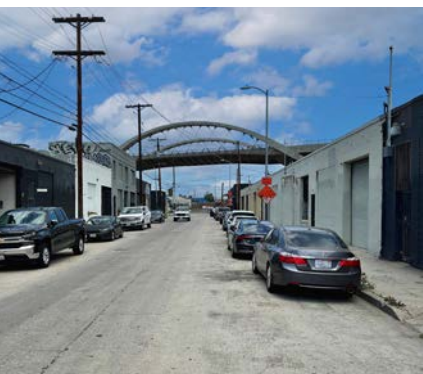
Built in 1933

M2 zoning

### OFFERING

\$1.40 PSF industrial gross rate

\$0.07 PSF CAM



THOMAS HOLLAND, CCIM, CPM, SIOR

323.270.8456

tom.holland@kidder.com

LIC N° 01186709

**KIDDER.COM**

This information supplied herein is from sources we deem reliable. It is provided without any representation, warranty, or guarantee, expressed or implied as to its accuracy. Prospective Buyer or Tenant should conduct an independent investigation and verification of all matters deemed to be material, including, but not limited to, statements of income and expenses. Consult your attorney, accountant, or other professional advisor.

