

# Park Central Sublease

Fully conditioned - Flex  
Parham/I-95 Submarket

8801 Central Park Drive, Suite 200  
Richmond, VA 232274  
[cbre.us/richmond](http://cbre.us/richmond)



# Park Central Sublease

8801 Central Park Drive, SUITE 200 | Richmond, VA 23227



# 15,238

Available Space (SF)

# \$10.00

Sublease Rental Rate NNN ( $\pm$  \$3.69, NNN)

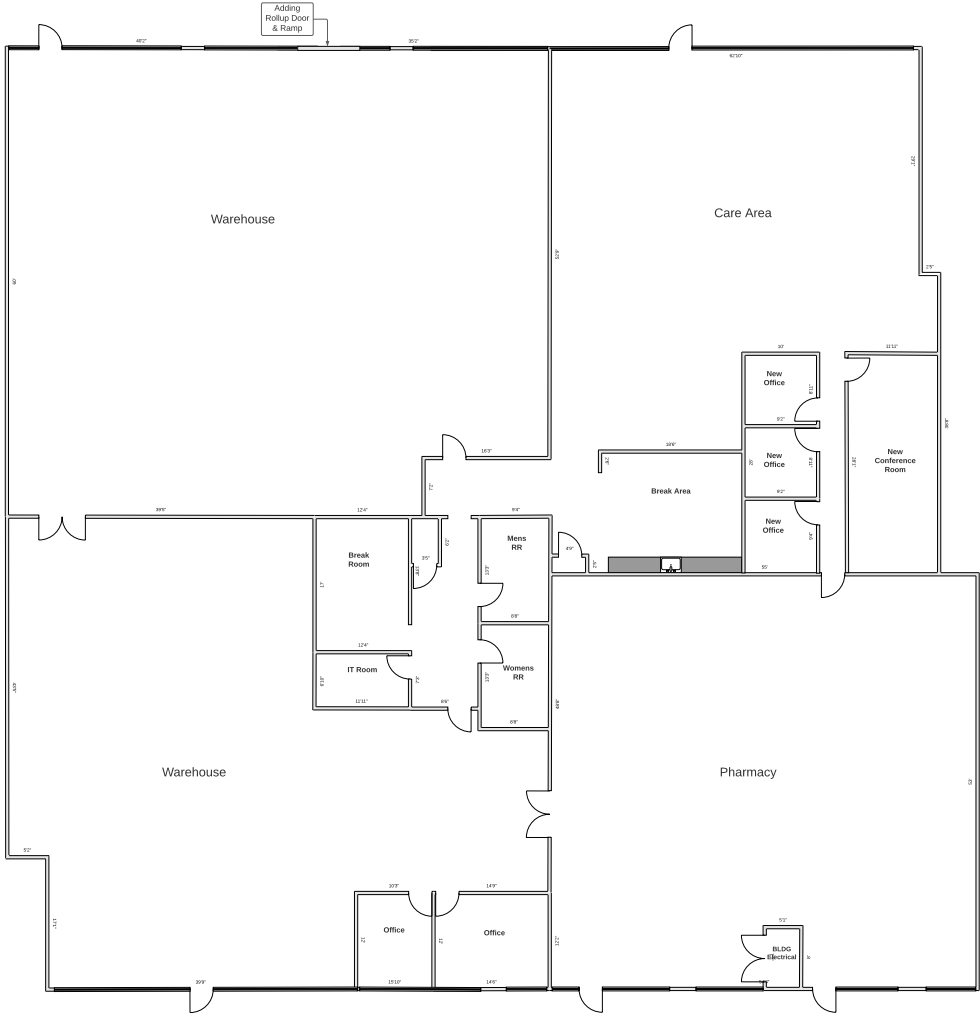
# 3/31/27

Sublease Expiration

## Property Overview

Park Central V is part of a three building Class A one story office/flex building park in Henrico County. This corporate park setting offers availability to Comcast & Verizon hook up and offers building signage.

- + Brick & glass facade with private storefront entrances
- + Property offers direct access to I-95, Route 1 & I-295
- + Ample parking
- + M-1 zoning
- + Fully conditioned - throughout
- + 10'-14' clear ceiling height
- + 1 drive in door
- + 2 Large Kitchen's
- + Large Conference Room 10-12 people
- + 5 private offices



## Park Central Sublease

8801 Central Park Drive, SUITE 200 | Richmond, VA 23227

# For Sublease



## Contact Us

### Matt Hamilton

Senior Vice President

T | +1 804 401 4005

C | +1 804 370 9454

matt.hamilton@cbre.com

© 2024 CBRE, Inc. All rights reserved. This information has been obtained from sources believed reliable, but has not been verified for accuracy or completeness. You should conduct a careful, independent investigation of the property and verify all information. Any reliance on this information is solely at your own risk. CBRE and the CBRE logo are service marks of CBRE, Inc. All other marks displayed on this document are the property of their respective owners, and the use of such logos does not imply any affiliation with or endorsement of CBRE. Photos herein are the property of their respective owners. Use of these images without the express written consent of the owner is prohibited.

[cbre.us/richmond](https://cbre.us/richmond)

# CBRE