

FOR LEASE

Ridgeview Office Center

13100 WAYZATA BOULEVARD, MINNETONKA, MN 55305



Newly Renovated Building - Modern Design!



Property Highlights

- Newly renovated building with modern design
- Highly visible from I-394
- Large building conference room with Wi-Fi
- Collaborative seating area in lobby with Wi-Fi
- New ADA restrooms
- Touchless sinks, toilets and soap dispensers
- Centralized waste collection
- 22 underground parking stalls
- Abundant surface parking
- Electronic directory board

FOR LEASE

Ridgeview Office Center

13100 WAYZATA BOULEVARD, MINNETONKA, MN 55305



Year Built/Renovated:

1983/2019

Building Size:

45,737 RSF

Space Available:

Suite 350 - 2,268 RSF

Lease Rate:

\$18.00 Net per rentable square feet

2024 Estimated Taxes/Ops:

\$ 4.25 Per RSF Taxes

\$ 9.34 Per RSF Ops

\$13.51 Per RSF Total

Location

Located in Minnetonka on the Northeast corner of I-394 & Plymouth Road. Near Ridgedale Mall, Ridgehaven, Ridge Square, Target, Best Buy, Whole Foods and many more!

Ridgeview Office Center is a four (4) story office building consisting of approximately 47,700 square feet (excluding the underground parking and storage area), with an average floor plate of 13,000 square feet, located in Minnetonka just off I-394 and Plymouth Road, visible to 81,000+ vehicles per day. This building is a hotspot of convenience with accessibility, visibility and proximity to a variety of retail and restaurant options. Ridgeview Office Center was built in 1983 and renovated in 2019 with the newest technologies and modern design. It's all about the location, design and service – this building has it all.

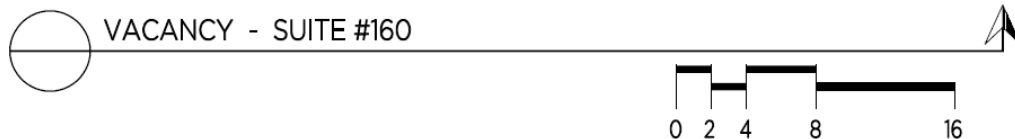
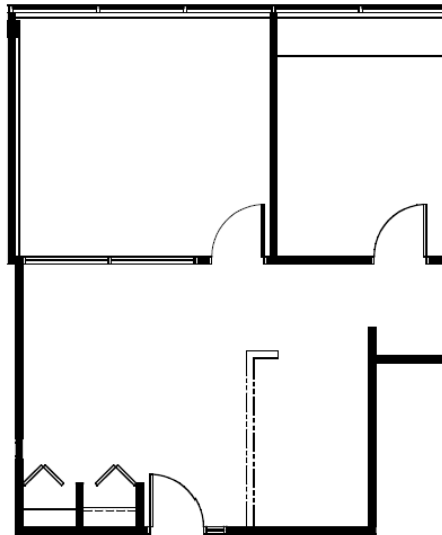


FOR LEASE

Ridgeview Office Center

13100 WAYZATA BOULEVARD, MINNETONKA, MN 55305

1st Floor



COMMERCIAL REAL ESTATE SERVICES, INC.

85 EAST SEVENTH PLACE, SUITE 200, ST. PAUL, MN 55101-2106

Sherry Hastings

(651) 324-0243

shastings@cres-inc.com

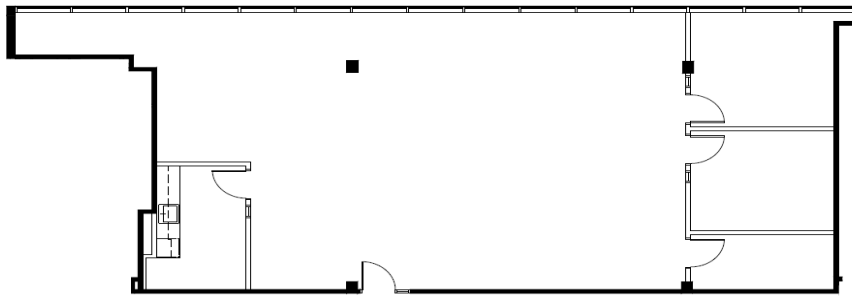
FOR LEASE

Ridgeview Office Center

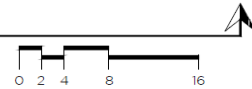
13100 WAYZATA BOULEVARD, MINNETONKA, MN 55305

3RD Floor

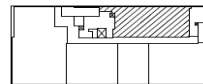
COMMERCIAL REAL ESTATE SERVICES, INC.



SUITE #350



RIDGEVIEW OFFICE CENTER		
13100 WAYZATA BLVD.	THIRD FLOOR	
MINNETONKA, MN 55305	03/07/22	2,268 RSF



archimea
Interior Design Services, Inc.
300 Fifth Ave. Suite 500, Bloomington, MN 55425 952.854.3204



COMMERCIAL REAL ESTATE SERVICES, INC.

85 EAST SEVENTH PLACE, SUITE 200, ST. PAUL, MN 55101-2106

Sherry Hastings

(651) 324-0243

shastings@cres-inc.com