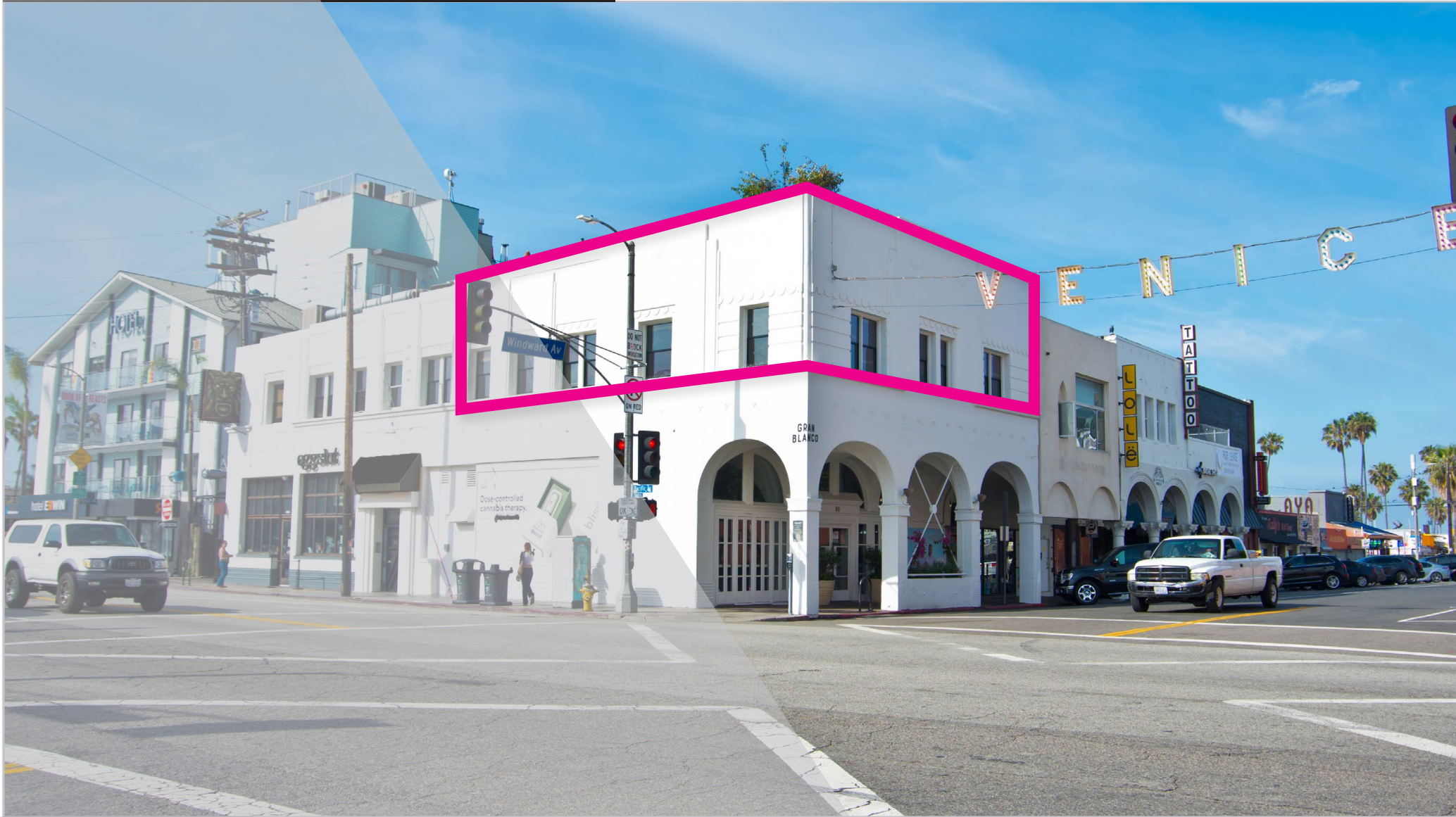


1607 PACIFIC AVE.
VENICE, CALIFORNIA 90291



RARE & ICONIC

**CREATIVE OFFICE
FOR LEASE**



PALOMA
REALTY PARTNERS

EXECUTIVE SUMMARY

Paloma Realty Partners is proud to present 1607 Pacific Avenue, a truly rare and iconic creative office space available for lease in the heart of Venice Beach. This ±2,500 SF second floor space blends historic charm with functional design, making it the ideal setting for creative teams, boutique firms, or brands looking to make a bold statement.

Positioned just steps from the beach and surrounded by Venice's top dining, retail, and cultural amenities, the property sits in one of the most walkable, energetic, and design-forward neighborhoods in Los Angeles.

Offered at \$5.50/SF per month NNN (\$.93 in NNs), this building features exposed 16' bow truss ceilings, original hardwood floors, and a blend of private offices, open workspace, kitchen, and private bathroom. With nearby street parking and both short- and long-term lots within 50 yards, access and convenience are seamless.



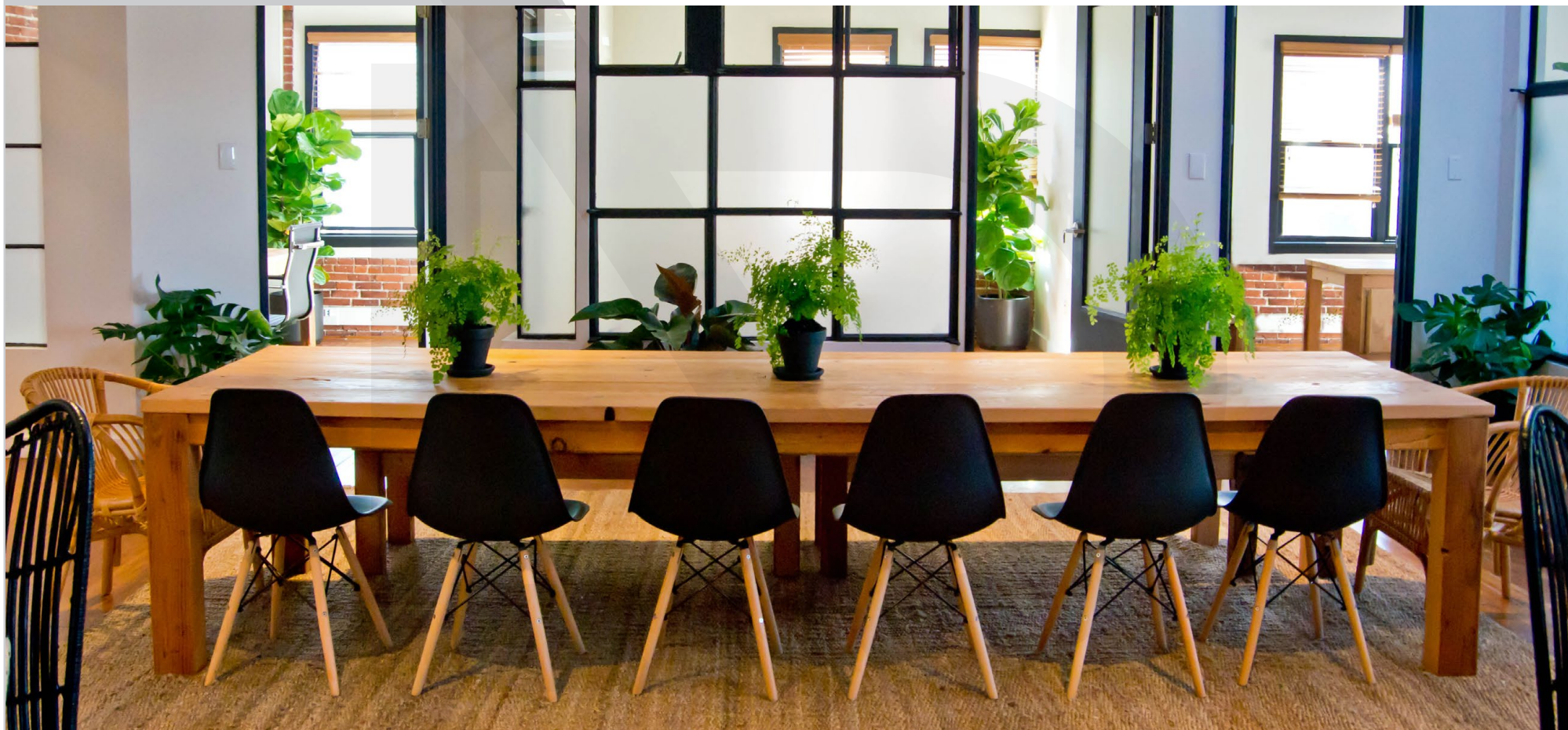
PROPERTY HIGHLIGHTS

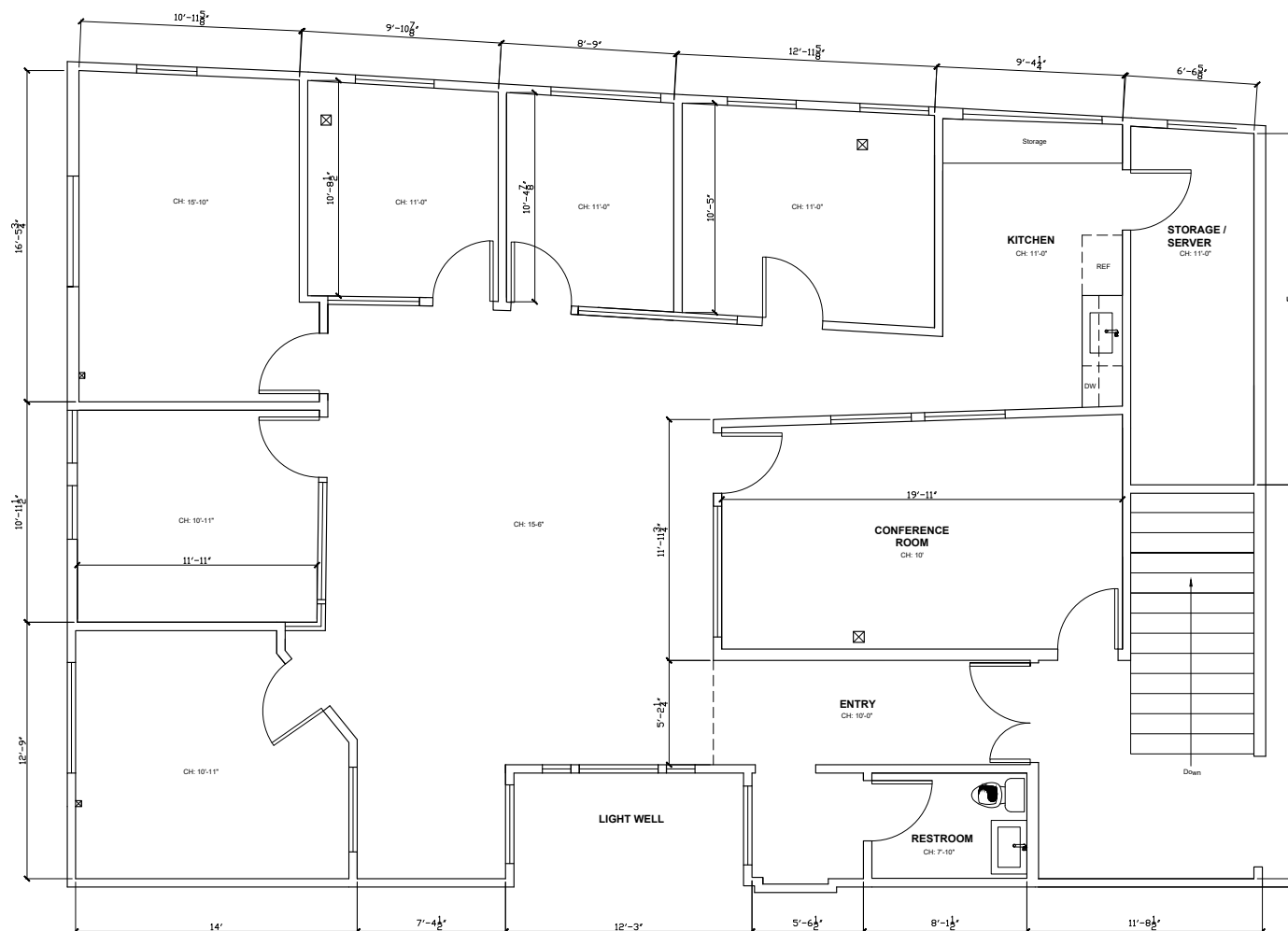
- 2,500 SF FREESTANDING CREATIVE OFFICE BUILDING
- 3-5 YEAR LEASE TERM
- EXPOSED BOW TRUSS CEILINGS (16') WITH SKYLIGHTS
- ORIGINAL HARDWOOD FLOORS
- FLEXIBLE LAYOUT: MIX OF PRIVATE OFFICES AND OPEN SPACE
- KITCHEN, PRIVATE BATHROOM, AND SERVER ROOM
- STREET PARKING AND NEARBY LOTS WITHIN 50 YARDS
- LOCATED IN THE VIBRANT VENICE BEACH DISTRICT NEAR ABBOT KINNEY, WINDWARD CIRCLE, AND THE VENICE SIGN

FINANCIALS & PROPERTY DETAILS

- RATE: \$5.50/SF/MONTH, NNN (\$.93 IN NNNS)
- SIZE: ±2,500 SF
- YEAR BUILT: 1905
- TERM: 3-5 YEARS







FLOOR PLAN

CHRIS CUNNINGHAM

818-481-7891

chris@palomarealtypartners.com

DRE #01476244

OLIVER FRIES

805-259-9638

oliver@palomarealtypartners.com

DRE #01891656

Disclaimer

This presentation has been prepared by Paloma Realty Partners, Inc. ("PRP") on the basis of information obtained from PRP's client (the "Owner") and other public sources, as of the specified date. Neither PRP nor the Owner undertake any duty or obligation to update the information. Neither PRP nor the Owner makes or gives any representation, warranty or guarantee, whether express or implied, that the information contained in this presentation or otherwise supplied to the recipient, at any time by or on behalf of PRP or the Owner whether in writing or not, relating to the offering discussed herein is complete or accurate or that it has been or will be audited or independently verified, or that reasonable care has been taken in compiling, preparing or furnishing the information. All measurements are approximate and have not been verified by Broker. You are advised to conduct an independent investigation to verify all information. This presentation provides a guide only and it is not intended to be exhaustive and, in particular, does not contain disclosure of any of the risks associated with the opportunity.