

INDUSTRIAL YARD FOR LEASE

0 Bulls Bay Highway, Jacksonville, FL 32220



OFFERING SUMMARY

Lease Rate: \$4,800.00 per month (NNN)

Lot Size: 1.3 Acres

Zoning: IL

Frontage: ±324' on Bulls Bay Highway

Location: The yard is 1 mile south of the intersection of Bulls Bay Highway & Commonwealth Avenue.



Mark Wainwright

904.398.1044 / mwainwright@pinestreetrps.com

Pine Street/RPS / 904.398.1044 / 2650-2 Rosselle Street, Jacksonville, FL 32204 / pinestreetrps.com

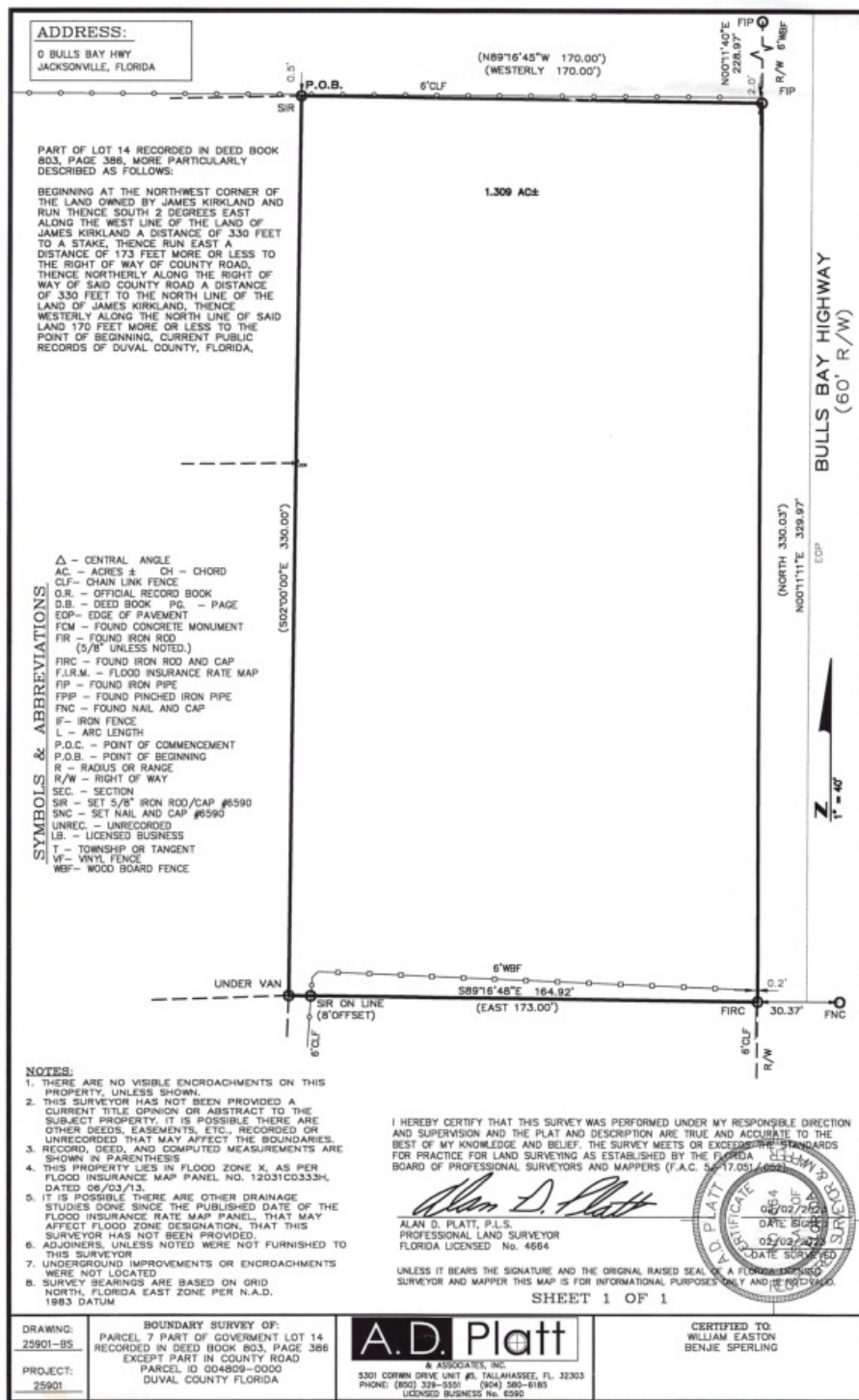
Information provided is deemed accurate, but subject to errors and/or omissions.



Pine Street / RPS

INDUSTRIAL YARD FOR LEASE

0 Bulls Bay Highway, Jacksonville, FL 32220



Mark Wainwright

904.398.1044 / mwainwright@pinestreetrps.com

Pine Street/RPS / 904.398.1044 / 2650-2 Rosselle Street, Jacksonville, FL 32204 / pinestreetrps.com

Information provided is deemed accurate, but subject to errors and/or omissions.



Pine Street / RPS