

MAP

SCALE: 1" = 100'

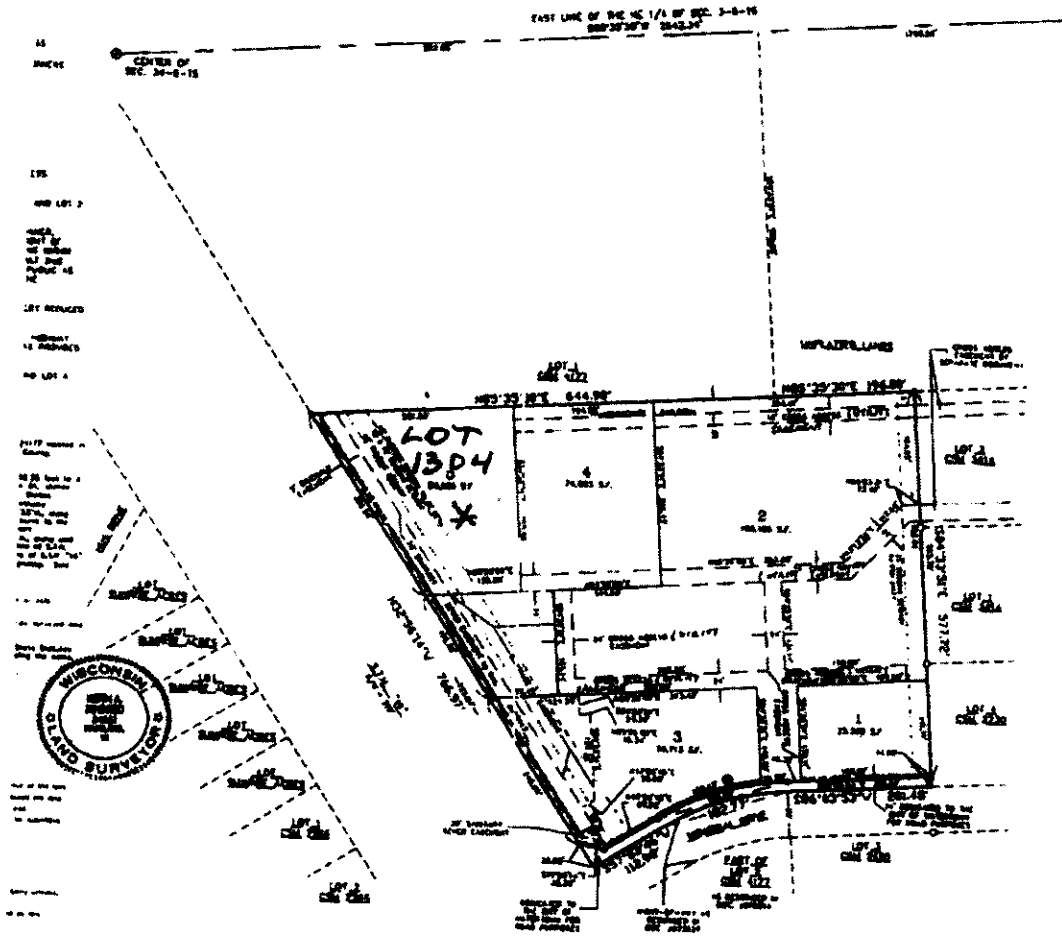
BEARINGS AND DISTANCES TO THE CORNERS OF THE PLAIN COMMONS SURVEY, BEING THE FIRST CORNER BEING MET BY THE NORTH END OF THE S. 1/4 OF SECTION 34-8-15 AS SHOWN ON THE MAP.

BEARINGS AND DISTANCES TO THE NEAREST CORNER ARE MEASURED TO THE NEAREST CORNER.

ANGLES ARE MEASURED TO THE NEAREST CORNER AND BEARINGS TO THE NEAREST CORNER.

# WATERTOWN COMMONS

BEING A PART OF LOT 2 OF CSM #4177 LOCATED IN THE NW 1/4 OF THE SE 1/4 OF SECTION 34, T.9N., R.15E., CITY OF WATERTOWN, DODGE COUNTY, WI



DATE	BY	REVISION	DESCRIPTION	BY	DATE	REVISION	DESCRIPTION	BY	DATE
10/1/77	J. J. ...	1	...	J. J. ...	10/1/77	1	...	J. J. ...	10/1/77
10/1/77	J. J. ...	2	...	J. J. ...	10/1/77	2	...	J. J. ...	10/1/77
10/1/77	J. J. ...	3	...	J. J. ...	10/1/77	3	...	J. J. ...	10/1/77
10/1/77	J. J. ...	4	...	J. J. ...	10/1/77	4	...	J. J. ...	10/1/77



177  
178  
179