



CREATIVE SPACE FOR LEASE

First English Evangelical Lutheran Church

1605 Monument Avenue | Richmond, VA



Monument Avenue Entrance

CREATIVE
OFFICE SPACE,
PRIVATE SCHOOL
OR DAYCARE
AVAILABLE

Contact Us:

REBECCA BARRICKLOW
SENIOR VICE PRESIDENT
M: 804.796.0500 | C: 804.399.4762
rbarricklow@rangecommercial.com

4235 Innslake Drive, Suite 200
Glen, Allen, VA 23060

[RANGECOMMERCIAL.COM](https://www.rangecommercial.com)

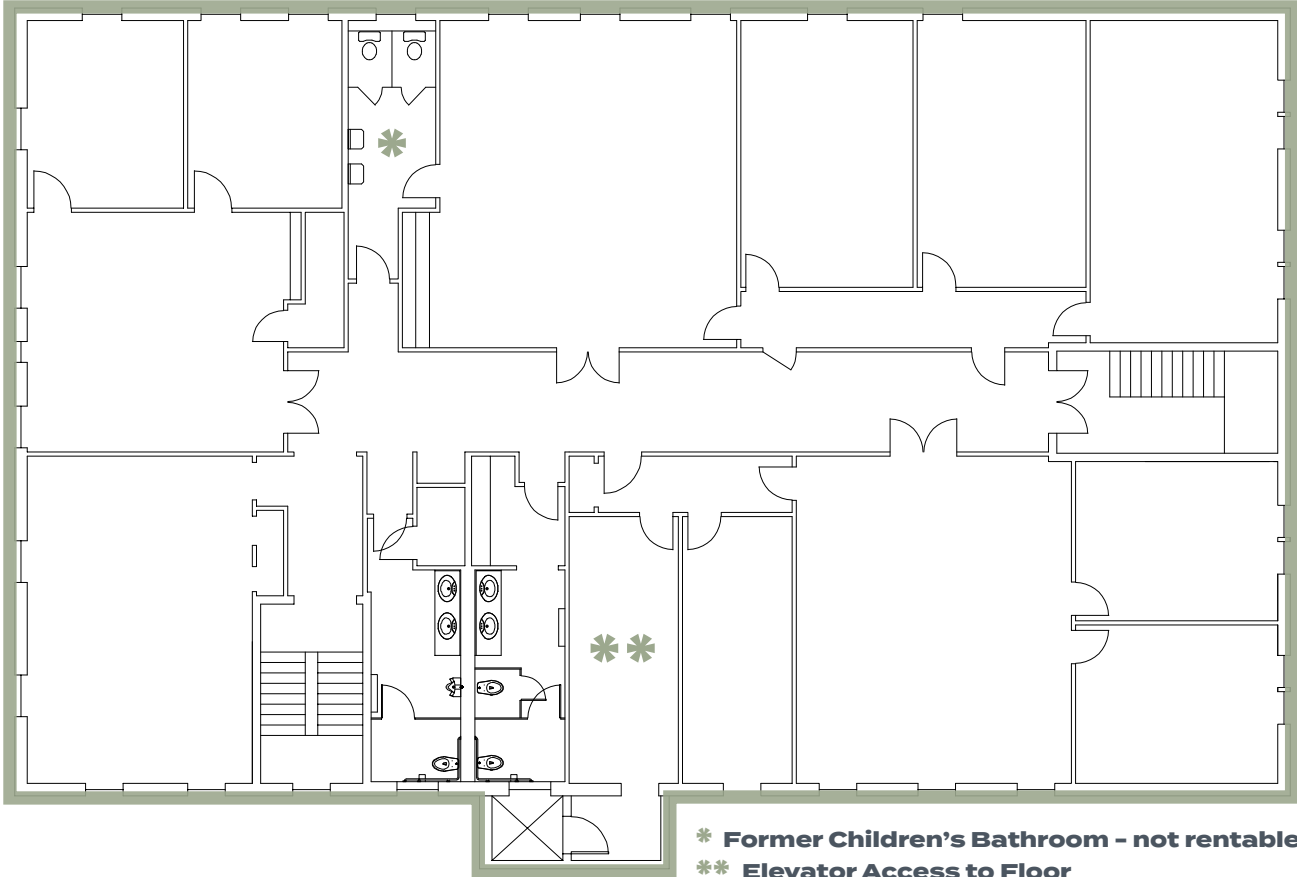
BUILDING AMENITIES

- Convenient location with street and onsite parking available
- Flexible lease terms
- Entire third floor available; up to 6,500 square feet
- Great for individual office suites or full floor user
- \$16.00 per square foot, full-service

Copyright © 2024 Range Commercial Partners. Information herein has been obtained from sources deemed reliable, however its accuracy cannot be guaranteed. The user is required to conduct their own due diligence and verification.

OFFICE SPACE FOR LEASE | 1605 MONUMENT AVENUE

3rd Floor Available Up to 6,500 SF



* Typical Example of Current Condition



* Rear of Building - Main Entrance to Space

OFFICE SPACE FOR LEASE | 1605 MONUMENT AVENUE

AREA MAP



Contact Us:

REBECCA BARRICKLOW

SENIOR VICE PRESIDENT

D: 804.796.0516 | C: 804.399.4762 | rbarricklow@rangecommercial.com

RANGECOMMERCIAL.COM

