

No.	Date	Description
0	6/30/22	Issued for Permit

This drawing is an instrument of service. It is the property of HODGE Engineering. It may not be copied in whole or in part without the written permission of HODGE Engineering. HODGE Engineering disclaims any and all responsibility or liability for problems which arise from failure to follow these plans, specifications and design unless they conform, or problems which arise from other's failure to obtain and/or follow the design professional's guidance with respect to any errors, omissions, inconsistencies, ambiguities or conflicts which are alleged. Design professional's electronic or digital seal or signature is effective only as to that version of this document as originally published by design professional. Design professional is not responsible for any subsequent modification, completion, or unauthorized use of such document. To verify the validity or applicability of the seal or signature, contact design professional.

SL AMERICA OFFICE BUILDOUT

1521 Mountain Road
Anderson Co.,
Tennessee

FLOOR PLANS - OFFICE / ENTRY

GENERAL RCP NOTES

- COMPLY WITH FEDERAL, STATE, AND LOCAL CODES AND REGULATIONS.
- COORDINATE LOCATION OF MECHANICAL / ELECTRICAL / FIRE PROTECTION EQUIPMENT TO CLEAR STRUCTURAL FRAMING AND ARCHITECTURAL COMPONENTS. MAINTAIN CLEARANCES AS REQUIRED BY CODES AND ACCESSIBILITY AS NEEDED FOR PROPER MAINTENANCE.
- FLASHING OF OPENINGS AND PENETRATIONS SHALL BE IN ACCORDANCE WITH THE MOST RECENT S.M.A.C.N.A. STANDARDS AND RECOMMENDATIONS.
- MAINTAIN THE FIRE RESISTANCE REQUIREMENTS, REQUIRED BY CODE, FOR A NON-COMBUSTIBLE BUILDING BY USE OF FIRE RESISTANCE BUILDING COMPONENTS.
- MAINTAIN FIRE RATINGS AT OPENINGS IN ROOF/CEILING SYSTEMS. MAINTAIN FIRE RATINGS IN ROOF/CEILING SYSTEMS AT PENETRATIONS AND AT PERIMETERS. SEE ARCHITECTURAL DRAWINGS FOR DETAILS. IF NOT DETAILED SEAL PENETRATIONS AND PERIMETERS WITH RATED SEALANTS AND FIRE SAFE MATERIALS TO MATCH FIRE RATING OF WALL, FLOOR OR ROOF/CEILING SYSTEM PER U.L. STANDARDS.
- PIPE SLEEVES, FRAMED OPENINGS AND MISCELLANEOUS OPENINGS INDICATED ON THE ARCHITECTURAL DRAWINGS BUT NOT SIZED OR DIMENSIONALLY LOCATED SHALL BE SIZED AND LOCATED AS INDICATED BY THE APPLICABLE MECHANICAL, PLUMBING, ELECTRICAL OR STRUCTURAL DRAWINGS. THESE OPENINGS SHALL BE INSTALLED IN ACCORDANCE WITH THE APPLICABLE ARCHITECTURAL DETAILS.
- DIMENSIONS ON REFLECTED CEILING PLAN ARE SHOW TO FACE OF GYPSUM BOARD UNLESS OTHERWISE NOTED.
- ALL SUSPENDED CEILINGS THIS AREA @ 10'-0"

RCP LEGEND

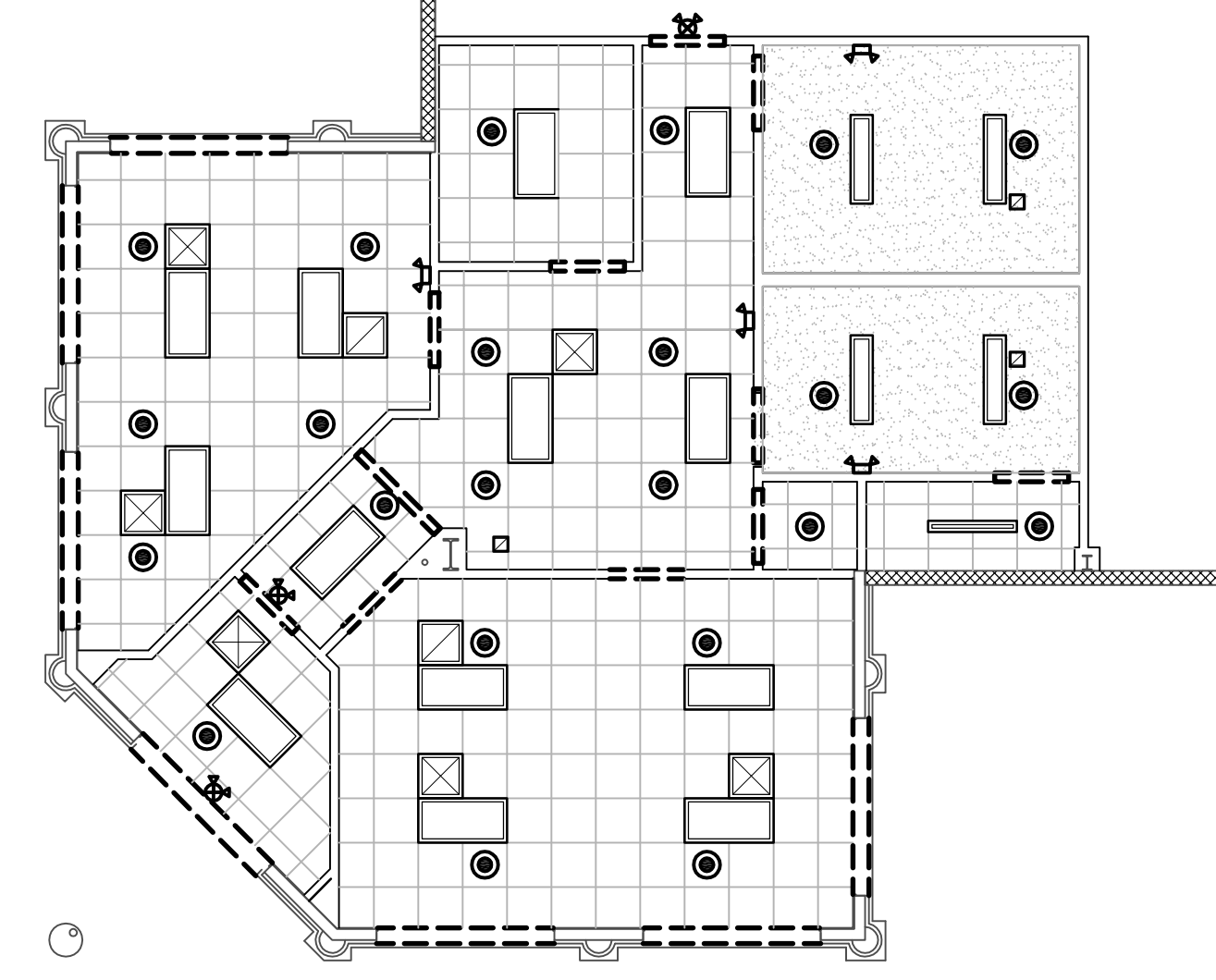
SYMBOL	DESCRIPTION
	6" x 4'-0" SURFACE MOUNTED FIXTURE
	2'-0" x 4'-0" RECESSED FIXTURE
	EMERGENCY LIGHT FIXTURE
	RETURN AIR GRILL
	SUPPLY GRILL
	CEILING GRID
	SPRINKLER HEAD
	HEADER

GENERAL NOTES

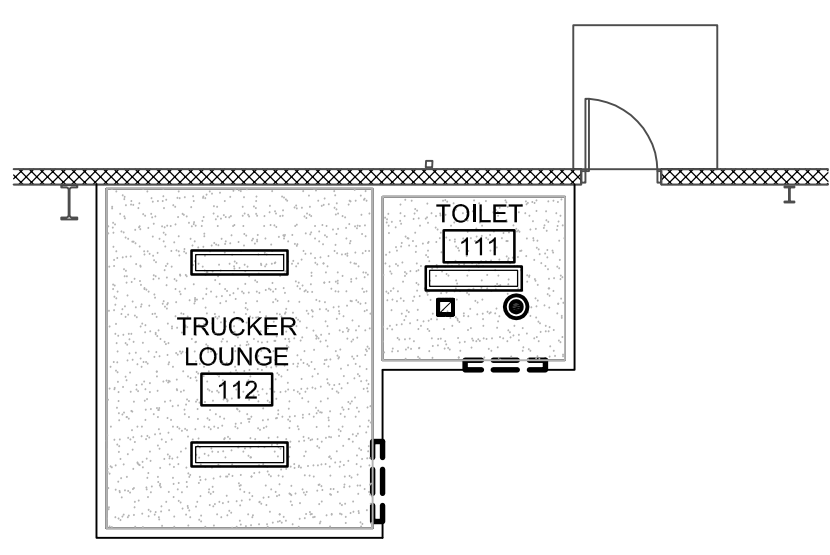
- COMPLY WITH FEDERAL, STATE, AND LOCAL CODES AND REGULATIONS.
- REFER TO CIVIL DRAWINGS FOR SIDEWALKS AND CURB INFORMATION.
- TENANT WILL PROVIDE FIRE EXTINGUISHER IN ACCORDANCE WITH NFPA 101. LOCATION TO BE COORDINATED WITH LOCAL CODE OFFICIAL.
- INTERIOR COLUMN LINE DIMENSIONS ARE TO THE COLUMN CENTERLINES.
- DIMENSIONS AT STUD OR MASONRY WALLS ARE TO THE FACE OF STUD OR FACE OF MASONRY, UNLESS NOTED OTHERWISE.
- SEE "WALL TYPE LEGEND" FOR WALL MATERIALS, HEIGHTS AND FIRE RATINGS.
- SEE "DOOR SCHEDULE" FOR DOOR TYPES, SIZES, FIRE RATINGS AND DETAILS.
- SEE STRUCTURAL DRAWINGS FOR CONCRETE SLABS, FOOTINGS AND REINFORCING.
- COORDINATE LOCATION OF MECHANICAL / ELECTRICAL / FIRE PROTECTION EQUIPMENT TO CLEAR STRUCTURAL FRAMING AND ARCHITECTURAL COMPONENTS. MAINTAIN CLEARANCES AS REQUIRED BY CODES AND ACCESSIBILITY AS NEEDED FOR PROPER MAINTENANCE.
- FLASHING OF OPENINGS AND PENETRATIONS SHALL BE IN ACCORDANCE WITH THE MOST RECENT S.M.A.C.N.A. STANDARDS AND RECOMMENDATIONS.
- MAINTAIN THE FIRE RESISTANCE REQUIREMENTS, REQUIRED BY CODE, FOR A NON-COMBUSTIBLE BUILDING BY USE OF FIRE RESISTANCE BUILDING COMPONENTS.
- WOOD BLOCKING SHALL BE FIRE RETARDANT TYPE AND PROVIDED AS INDICATED ON ARCHITECTURAL DRAWINGS. IF NOT INDICATED PROVIDE BLOCKING AT WALL SUPPORTED RAILS AND WALL HUNG EQUIPMENT DESIGNED TO RESIST FORCES AS DESIGNATED BY THE APPLICABLE BUILDING CODE. OMIT BLOCKING AT HIGH TEMPERATURE PENETRATIONS THROUGH ROOF OR WALLS UNLESS PENETRATION IS ADEQUATELY INSULATED AND HAS ADEQUATE CLEARANCE FOR VENTILATION.
- MAINTAIN FIRE RATINGS AT OPENINGS IN RATED WALLS AND FLOORS. MAINTAIN FIRE RATINGS IN RATED WALLS AND FLOORS AT PENETRATIONS AND AT PERIMETERS. SEE ARCHITECTURAL DRAWINGS FOR DETAILS. IF NOT DETAILED SEAL PENETRATIONS AND PERIMETERS WITH RATED SEALANTS AND FIRE SAFE MATERIALS TO MATCH FIRE RATING OF WALL, FLOOR OR ROOF/CEILING SYSTEM PER U.L. STANDARDS.
- INDICATE FIRE RATING OF WALLS BY STENCILING WALL RATING ON THE WALL FINISH AT EACH SIDE OF THE RATED WALL IN A VISIBLE LOCATION ABOVE CEILING, IF APPLICABLE. AS A WARNING THAT ALL EXISTING AND NEW PENETRATIONS SHALL BE RATED.
- PIPE SLEEVES, FRAMED OPENINGS AND MISCELLANEOUS OPENINGS INDICATED ON THE ARCHITECTURAL DRAWINGS BUT NOT SIZED OR DIMENSIONALLY LOCATED SHALL BE SIZED AND LOCATED AS INDICATED BY THE APPLICABLE MECHANICAL, PLUMBING, ELECTRICAL OR STRUCTURAL DRAWINGS. THESE OPENINGS SHALL BE INSTALLED IN ACCORDANCE WITH THE APPLICABLE ARCHITECTURAL DETAILS.
- GYPSUM BOARD TO BE INSTALLED IN ACCORDANCE WITH ASTM C 840. THE STANDARD SPECIFICATION FOR APPLICATION AND FINISHING OF GYPSUM BOARD.

WALL LEGEND

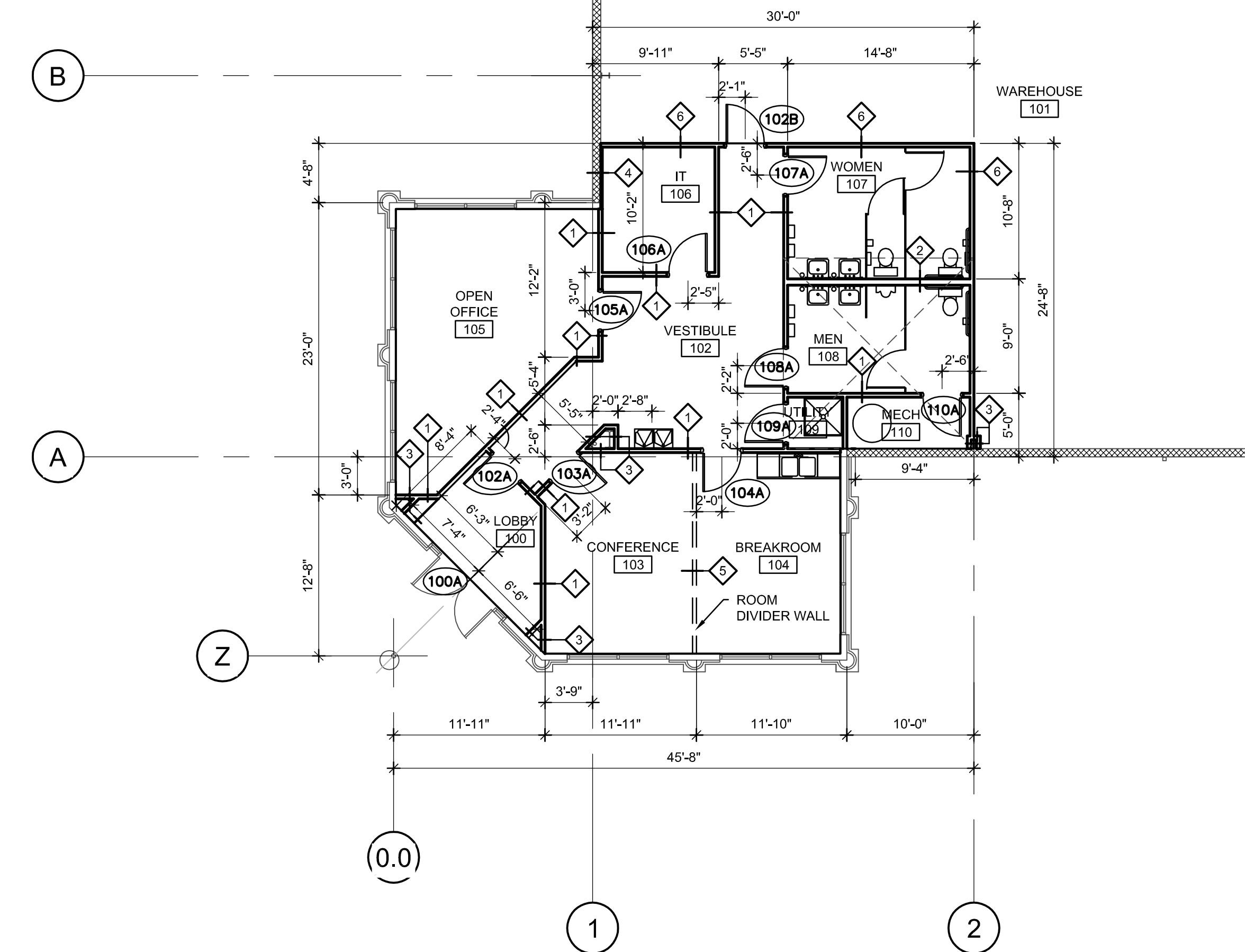
- 3-5/8" METAL STUD WITH 5/8" GYPSUM BOARD ON EACH SIDE. GYPSUM BOARD TO EXTEND MINIMUM 6" ABOVE CEILING.
- 6" METAL STUD WITH 5/8" GYPSUM BOARD ON EACH SIDE. GYPSUM BOARD TO EXTEND MINIMUM 6" ABOVE CEILING.
- 3-5/8" METAL STUD WITH 5/8" GYP. BOARD ON INTERIOR FACING SIDE. GYPSUM BOARD TO EXTEND MINIMUM 6" ABOVE CEILING.
- 3-5/8" GYPSUM BOARD ON 1-1/2" HAT CHANNELS ON EXISTING CMU WALLS. GYPSUM BOARD TO EXTEND MINIMUM 6" ABOVE CEILING.
- SEGMENTED/ ACCORDION STYLE ROOM DIVIDING WALL
- 3-5/8" METAL STUD WITH 5/8" GYPSUM BOARD ON EACH SIDE. GYPSUM BOARD TO EXTEND MINIMUM 6" ABOVE CEILING. 4'-0" PROTECTIVE PLYWOOD BASE ON WAREHOUSE SIDE
- 5/8" GYPSUM BOARD ON 6" METAL STUDS ON EXISTING CMU WALLS. GYPSUM BOARD TO EXTEND MINIMUM 6" ABOVE CEILING.



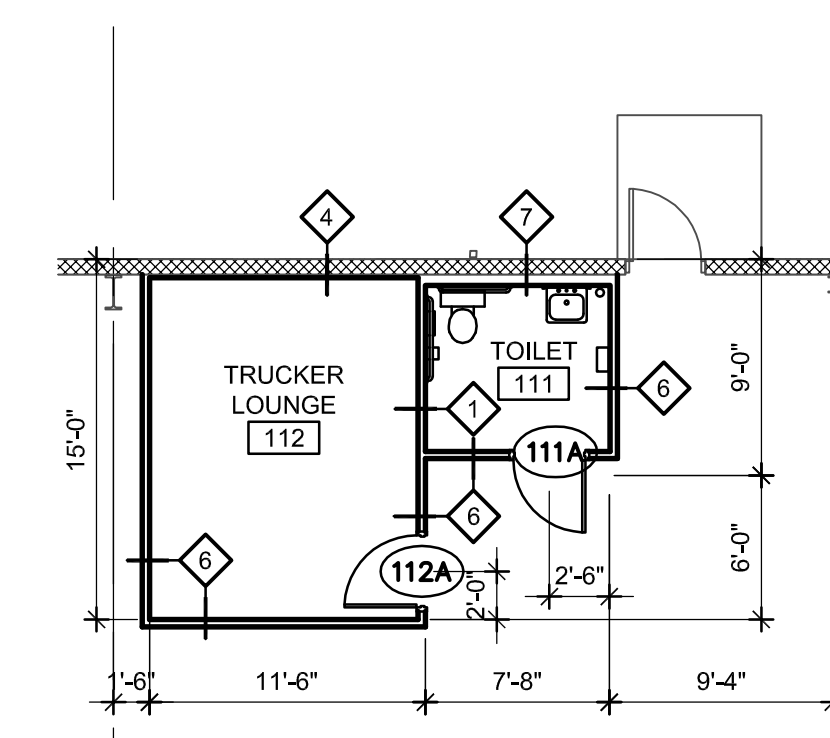
2 REFLECTED CEILING PLAN
A1.1 SCALE: 1/8"=1'-0"



3 REFLECTED CEILING PLAN
A1.1 SCALE: 1/8"=1'-0"



1 ENLARGED OFFICE / ENTRY PLAN
A1.1 SCALE: 1/8"=1'-0"



4 ENLARGED TRUCKER LOUNGE
A1.1 SCALE: 1/8"=1'-0"

ROOM FINISH SCHEDULE:

ROOM NO.	DESCRIPTION	FLOOR MATERIAL	BASE MATERIAL	NORTH		SOUTH		EAST		WEST		CEILING		COMMENTS	
				MATERIAL	FINISH	MATERIAL	FINISH	MATERIAL	FINISH	MATERIAL	FINISH	MATERIAL	FINISH		HEIGHT
100	LOBBY	LVT	VINYL	GYP. BD	PAINT	GYP. BD	PAINT	GYP. BD	PAINT	GYP. BD	PAINT	ACT	-	9'-2"	
101	WAREHOUSE	CONC.	VINYL ON OFFICE AREA WALLS	STRUCT/INSUL	PAINT/FACTORY	STRUCT/INSUL	PAINT/FACTORY	STRUCT/INSUL	PAINT/FACTORY	STRUCT/INSUL	PAINT/FACTORY	STRUCTURE	PAINTED	VARIES	
102	VESTIBULE	LVT	VINYL	GYP. BD	PAINT	GYP. BD	PAINT	GYP. BD	PAINT	GYP. BD	PAINT	ACT	-	9'-0"	
103	CONFERENCE	LVT	VINYL	GYP. BD	PAINT	GYP. BD	PAINT	GYP. BD	PAINT	GYP. BD	PAINT	ACT	-	9'-2"	
104	BREAKROOM	LVT	VINYL	GYP. BD	PAINT	GYP. BD	PAINT	GYP. BD	PAINT	GYP. BD	PAINT	ACT	-	9'-2"	
105	OPEN OFFICE	LVT	VINYL	GYP. BD	PAINT	GYP. BD	PAINT	GYP. BD	PAINT	GYP. BD	PAINT	ACT	-	9'-2"	
106	IT	LVT	VINYL	GYP. BD	PAINT	GYP. BD	PAINT	GYP. BD	PAINT	GYP. BD	PAINT	ACT	-	9'-0"	
107	WOMEN	CERAMIC TILE	VINYL	GYP. BD	PAINT	GYP. BD	PAINT	GYP. BD	PAINT	GYP. BD	PAINT	GYP. BD.	PAINTED	9'-0"	1.
108	MEN	CERAMIC TILE	VINYL	GYP. BD	PAINT	GYP. BD	PAINT	GYP. BD	PAINT	GYP. BD	PAINT	GYP. BD.	PAINTED	9'-0"	1.
109	UTILITY	VCT	VINYL	GYP. BD	PAINT	GYP. BD	PAINT	GYP. BD	PAINT	GYP. BD	PAINT	ACT	-	9'-0"	
110	MECH	CONC.	VINYL	GYP. BD	PAINT	GYP. BD	PAINT	GYP. BD	PAINT	GYP. BD	PAINT	ACT	-	9'-0"	
111	TOILET	CERAMIC TILE	VINYL	GYP. BD	PAINT	GYP. BD	PAINT	GYP. BD	PAINT	GYP. BD	PAINT	GYP. BD.	PAINTED	9'-0"	1.
112	TRUCKER LOUNGE	LVT	VINYL	GYP. BD	PAINT	GYP. BD	PAINT	GYP. BD	PAINT	GYP. BD	PAINT	GYP. BD.	PAINTED	9'-0"	

1. PROVIDE SMOOTH HARD NON-ABSORBANT SURROUND (CERAMIC TILE) MINIMUM 2'-0" PAST FISXTURE TO HEIGHT OF 4'-0" (1210.2.2)