



Turn-key classical space in the

Plaza District

sublease | 13,787 RSF

Availability

Partial 8th floor - 13,787 RSF

Possession

2Q 2024

Term

Through November 2027

Rate

Upon request

Building highlights

- Wired Score Platinum and WELL Health-Safety rated since 2022
- 24/7 attended lobby
- Ground floor retailers include FedEx Office



WiredScore
PLATINUM

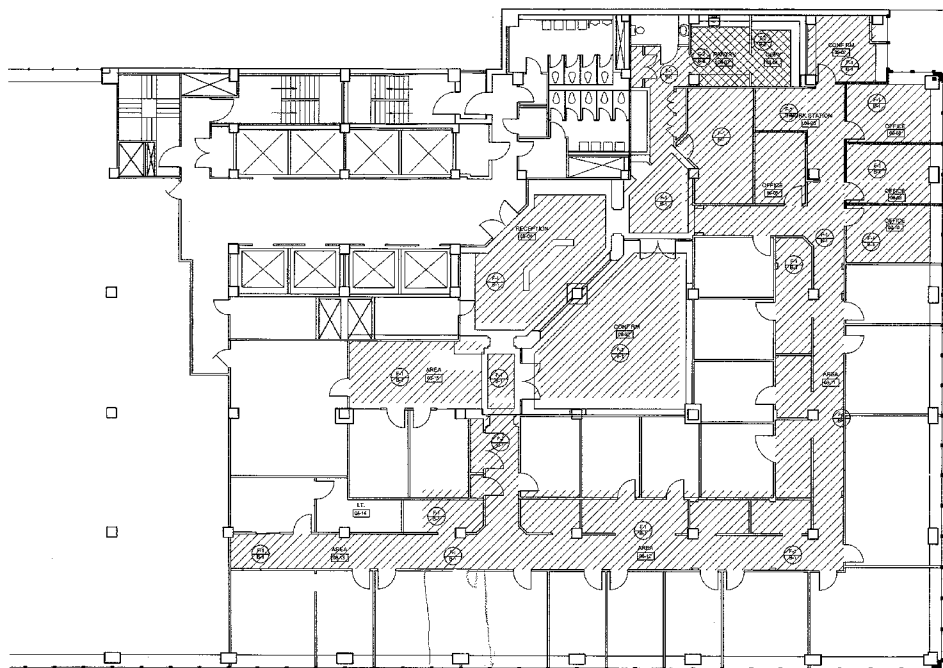


Office sublease

845 Third Avenue, Partial 8th Floor, New York, NY 10022

Partial 8th floor layout

- 12+ offices (4 large partner offices)
- 3 conference rooms including 1 large board room
- Lounge/library
- Storage area
- Kitchenette/pantry
- High-end reception area



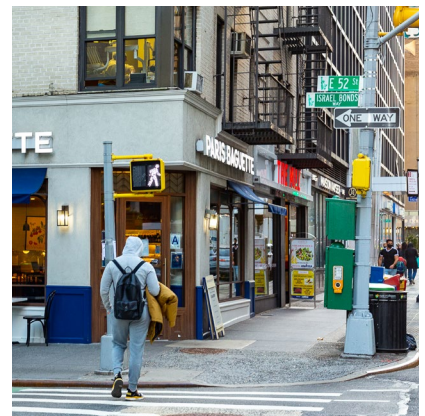
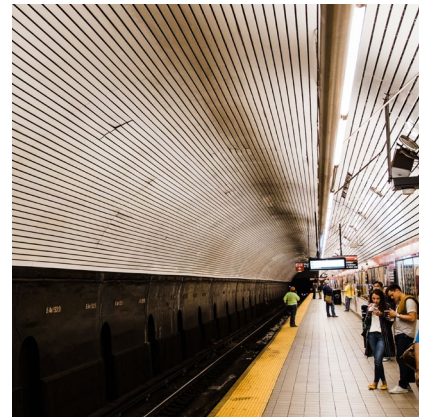
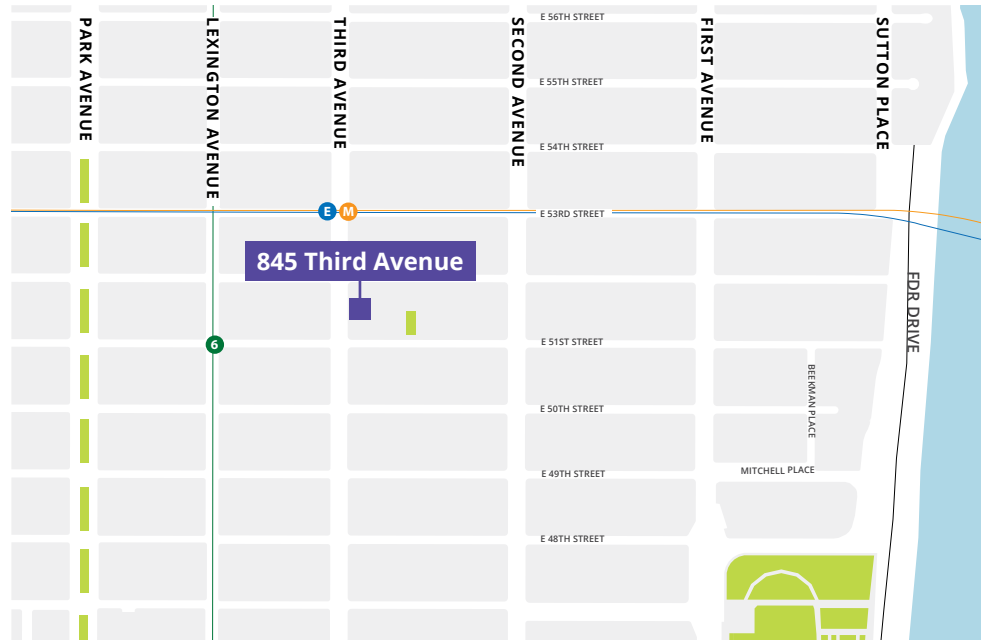
**AVISON
YOUNG**

Office sublease

845 Third Avenue, Partial 8th Floor, New York, NY 10022

Nearby transportation

- Located one block from Lexington Avenue - 51st station with access to:
6 E M
- Easy access to multiple Citi Bike locations
- One stop to Grand Central Terminal
- Conveniently located close to the FDR and the Ed Koch Queensboro Bridge entrances



Get more information:

Evan Foley | Director
O: 212 230 5974
M: 413 519 8575
evan.foley@avisonyoung.com

Joseph Gervino | Principal
O: 212 858 0798
M: 631 988 5320
joseph.gervino@avisonyoung.com

Alexa Damon | Associate
O: 212 371 2277
M: 631 807 1592
alexa.damon@avisonyoung.com

**AVISON
YOUNG**