

**OCCUPANCY SIGNAGE NOTE**

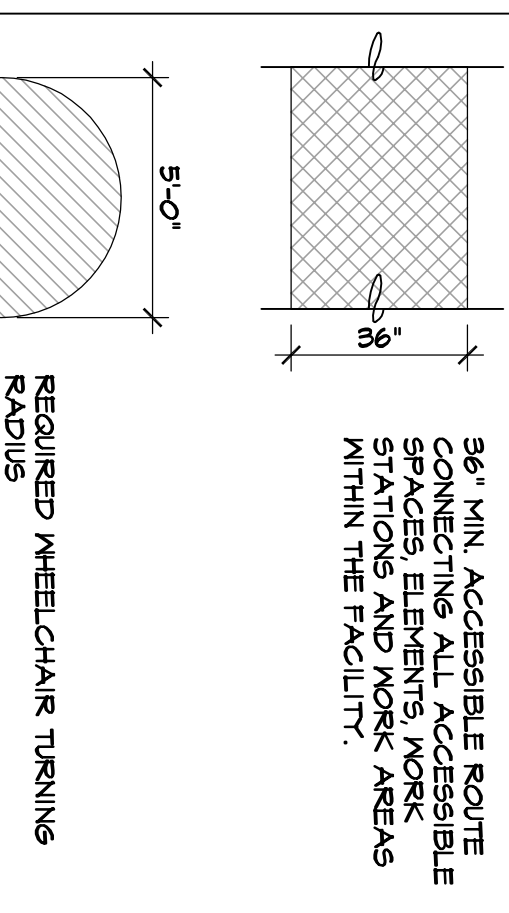
1. IBC 1004.3 - POSTING OF OCCUPANT LOAD & OCCUPANCY SIGNAGE SHALL HAVE THE OCCUPANT LOAD OF THE ROOM OR SPACE POSTED IN A CONSPICUOUS PLACE, NEAR THE MAIN EXIT OR EXIT ACCESS DOORWAY FROM THE ROOM OR SPACE. POSTED SIGNS SHALL BE OF AN APPROVED LEGIBLE PERMANENT DESIGN AND SHALL BE MAINTAINED BY THE OWNER OR AUTHORIZED AGENT.

**LEGEND**

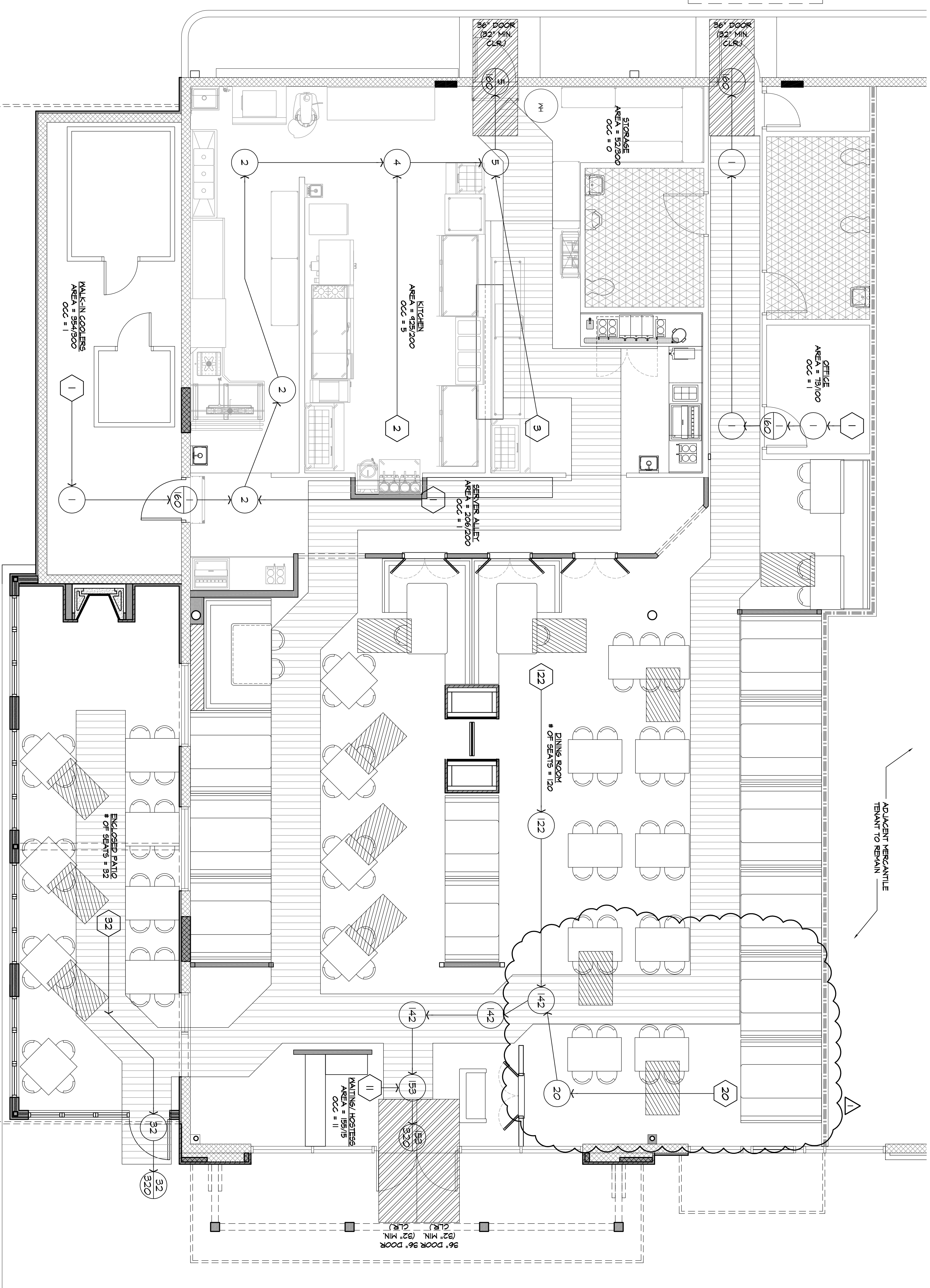
- 100 TOTAL OCCUPANT LOAD / SPACE
- 100 OCCUPANT FLOW
- 435 AGGREGATE OCCUPANT LOAD PER EXITWAY ALLOWABLE OCCUPANT LOAD PER EXITWAY
- 100 AGGREGATE OCCUPANT LOAD PER STAIR EXITWAY ALLOWABLE OCCUPANT LOAD PER STAIR EXITWAY
- FE FIRE EXTINGUISHER / SEMI-RECESSED WALL MOUNT
- RESTROOM SPACE N/A BY NFPA TABLE 191.2

**LEGEND**

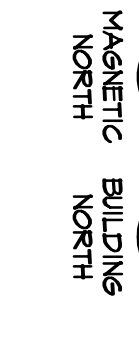
- MANEUVERING CLEARANCES & DOORS - CLEARANCES SHALL BE LEVEL AND CLEAR, 28" OR LESS SLOPE / CROSS SLOPE.
- MINIMUM REQUIRED CLEAR FLOOR SPACE HANDICAP ACCESSIBLE TABLE, ACCESSIBLE TABLES SHALL CONFORM TO ADA REQUIREMENTS AND CLEARANCE REQUIREMENTS. SEE CLEARANCE 21A(O) AND SHALL INCLUDE THE INTERNATIONAL SYMBOL OF ACCESSIBILITY (PERMANENTLY EMBOSSED) APPLIED TO THE TABLE TOP OR TABLE EDGE.
- 44" EXIT AISLE
- 44" PATH WITH 36" MIN. ACCESSIBLE ROUTE (32" MIN. CLEAR OPENING AT DOORWAYS) CONNECTING ALL ACCESSIBLE SPACES, ELEMENTS, WORK STATIONS & WORK AREAS WITHIN THE BUILDING AND FACILITY.
- 36" MIN. ACCESSIBLE ROUTE CONNECTING ELEVATOR STATIONS AND WORK AREAS WITHIN THE FACILITY.



NOTE: MINIMUM EGRESS REQUIREMENTS SHALL COMPLY WITH SECTION 1225 OF NFPA 101



**EGRESS PLAN**  
SCALE: 1/4" = 1'-0"



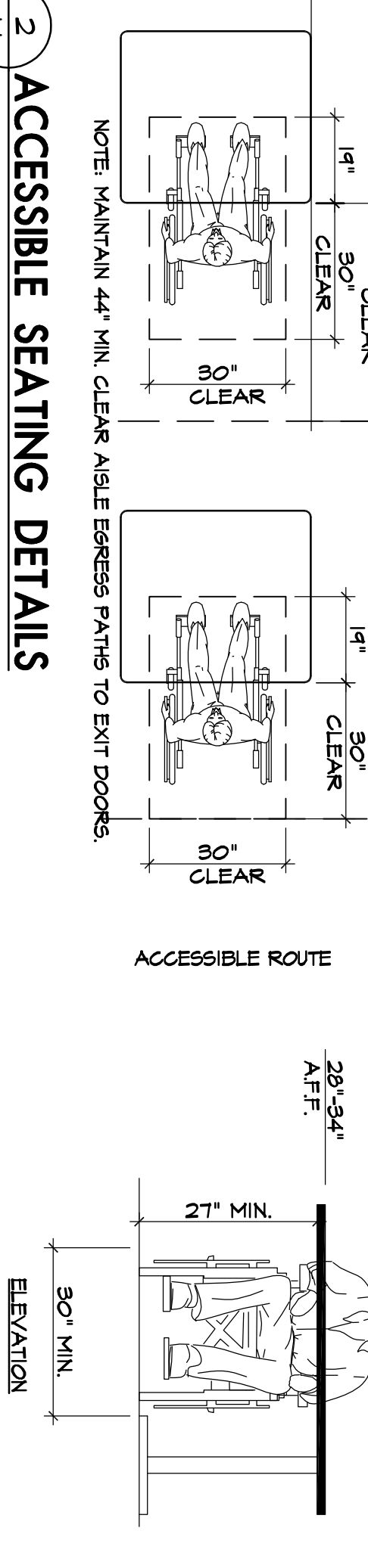
**NOTES**

1. THIS PLAN DOCUMENTS THE MAJOR LIFE SAFETY FEATURES OF THE PROJECT INCLUDING THE EXIT FLOW. SEE SHEET 1.0 FOR ADDITIONAL ACCESSIBILITY NOTES.
2. REFER TO ELECTRICAL DRAWINGS FOR LOCATION OF FIRE ALARM SYSTEM.
3. REFER TO REFLECTED CEILING PLANS AND ELECTRICAL DRAWINGS FOR EXIT LIGHT LOCATIONS.

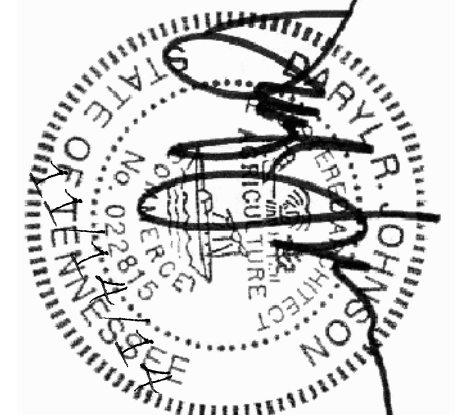
**SEATING BREAKDOWN**

INSIDE DINING BOOTHS	= 88 SEATS
TOTAL	= 68 SEATS
58 ACCESSIBLE SEATS	= 4 (12 SHOWN)

**ACCESSIBLE SEATING DETAILS**  
SCALE: N.T.S.



**Johnson Architecture**  
2240 Sunland Ave., Suite 105  
Knoxville, TN 37919  
865.671.3060  
janc.com



A New Restaurant for:  
**FLAPJACK'S PANCAKE CABIN**  
603 East Emory Road, Suite 101  
Powell, Tennessee 37849

REVISIONS:  
November 14, 2014

DATE: September 30, 2014  
FILE NAME: FL EMORY - 1.1  
PROJECT NO: 143050