



Colliers

For Sublease

# West Valley City Zaxby's Sublease

2683 High Commons Way | West Valley City, UT 84120

## Property Information

- **Size:** 3,652 SF
- **Asking Rent:** \$39.43 PSF
  - Monthly Rent:** \$11,999.86
  - Annual Rent:** \$143,998.36
- **Lease Term:** 9 years remaining (Expires March 2035)
- **0.95 AC** with ample parking (38 spaces)
- **Prime location:** situated in Highbury Centre, a busy retail corridor with strong demographics
- **Excellent visibility and access:** close to hotels, major roads and only 12 minutes from the Salt Lake City International Airport
- **Zoning:** Commercial (C)
- **Rare drive-thru opportunity:** moratorium on new drive-thrus along 5600 West adds unique value

## CONTACT US

### Brandon Goodman

Executive Vice President  
+1 801 828 0349  
brandon.goodman@colliers.com

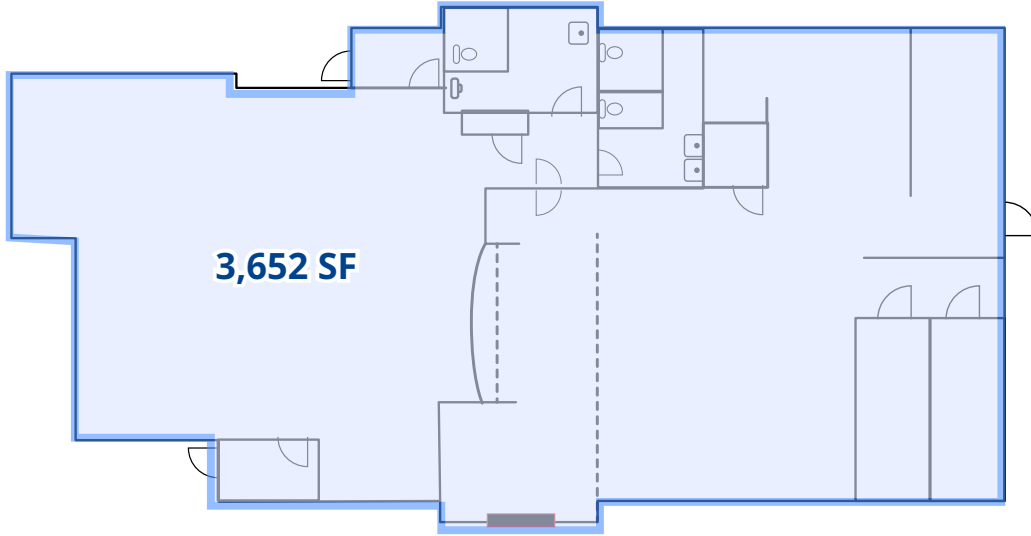
### Nate Monson

Vice President  
+1 925 765 7437  
nate.monson@colliers.com

### Colliers International

2100 Pleasant Grove Blvd., Suite 200  
Pleasant Grove, UT 84062  
Main: +1 801 947 8300  
colliers.com

# Site Plan & Property



# Area Focus



## West Valley City, Utah

*The city of West Valley City is located southwest of Salt Lake City, and shares additional borders with South Salt Lake, Magna, Taylorsville and Kearns and is the second-largest city in Utah.*

West Valley City covers over a 36-mile area, and though the city's center lies to the east, the 5600 West area, also known as the Hunter area, has grown exponentially over the past 20 years. The area is comprised of commercial and residential land uses, and features about a mile of suburban retail.

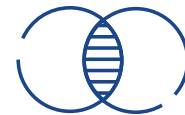
Many people throughout the valley commute to the area to shop and dine each day. 5600 West connects to I-80 and SR-201 to the north and extends all the way out to 9000 South in West Jordan, Utah. High traffic in the area was recently alleviated with the completion of the Mountain West Corridor to the west, which will eventually become a 35-mile freeway running from I-80 in Salt Lake County to S.R. 73 in Utah County.

### Demographics within a 3-mile radius



Population

**87,608**



Median Age

**32.7**



Median Household Income

**\$101,003**



Average Household Income

**\$114,941**



Households

**25,272**



Average Household Size

**3.46**



**CONTACT US**

**Brandon Goodman**

Executive Vice President  
 +1 801 828 0349  
 brandon.goodman@colliers.com

**Nate Monson**

Vice President  
 +1 925 765 7437  
 nate.monson@colliers.com

**Colliers International**

6440 S. Millrock Dr., Suite 500  
 Salt Lake City, UT 84121  
 Main: +1 801 947 8300  
 colliers.com



This document has been prepared by Colliers International for advertising and general information only. Colliers International makes no guarantees, representations or warranties of any kind, expressed or implied, regarding the information including, but not limited to, warranties of content, accuracy and reliability. Any interested party should undertake their own inquiries as to the accuracy of the information. Colliers International excludes unequivocally all inferred or implied terms, conditions and warranties arising out of this document and excludes all liability for loss and damages arising there from. This publication is the copyrighted property of Colliers International and/or its licensor(s). ©2025. All rights reserved.



**West Valley City Zaxby's Sublease**  
2683 High Commons Way | West Valley City, UT 84120