

Retail Space Available

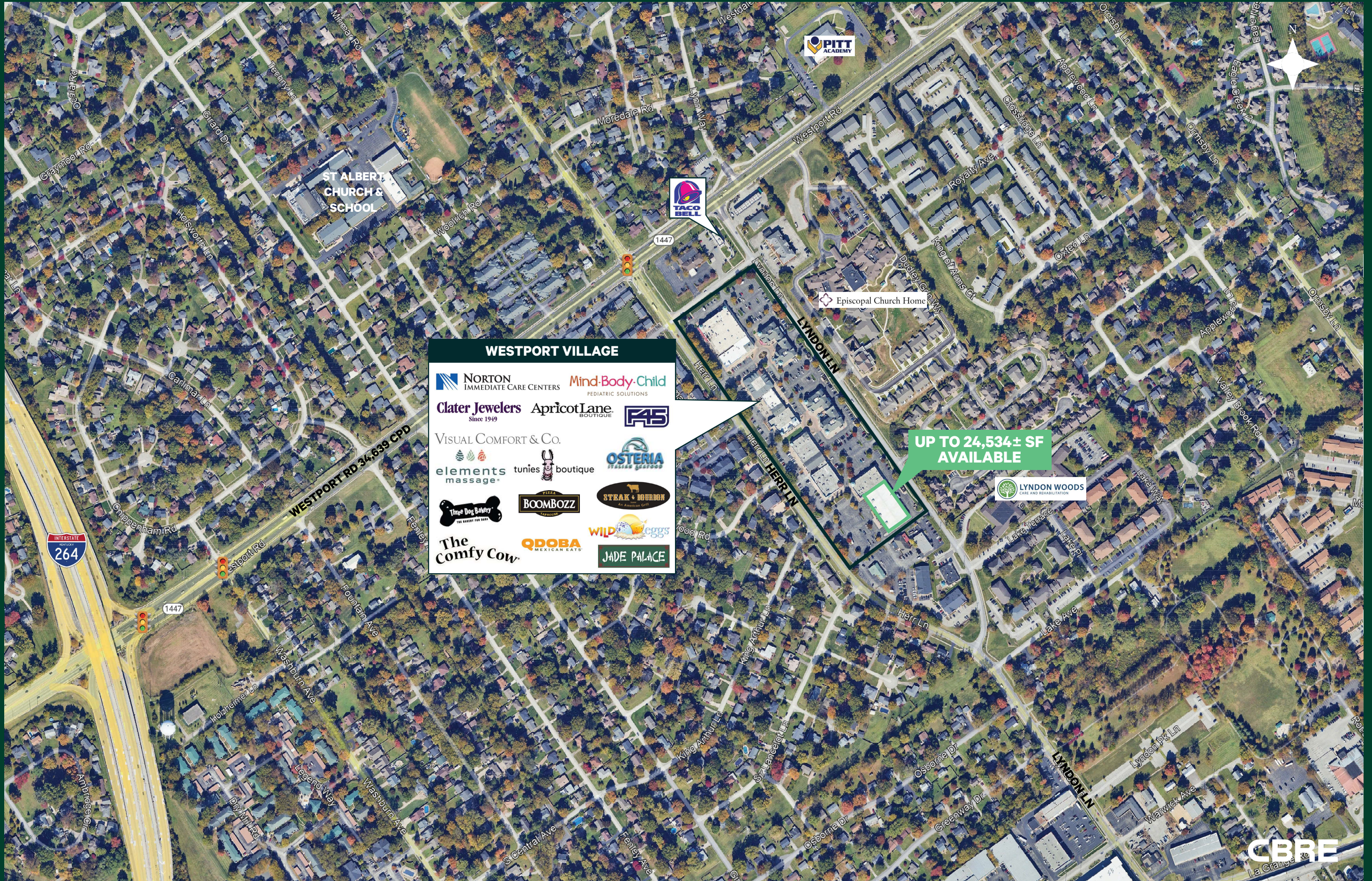
Boutique Shopping Center

Westport Village
1108 Lyndon Lane
Louisville, KY 40222



Property Features:

- + 8,000± to 24,534± square feet available
- + In line with Oberer's Flowers, Westport Whiskey & Wine and Hiko-a-Mon Sushi Bar & Fish Market
- + High traffic neighborhood location at Westport Road and Lyndon Lane
- + Easily accessible via Lyndon Lane & Herr Lane
- + The center includes Qdoba, Wild Eggs, Norton Immediate Care, Tunie's, Visual Comfort & Co., Mind Body Child, Boombozz Tap House, Napa River Grill and many other locally owned boutiques, restaurants, fitness studios and services
- + OPERATING BUSINESS - PLEASE DO NOT CONTACT THE STORE OR EMPLOYEES



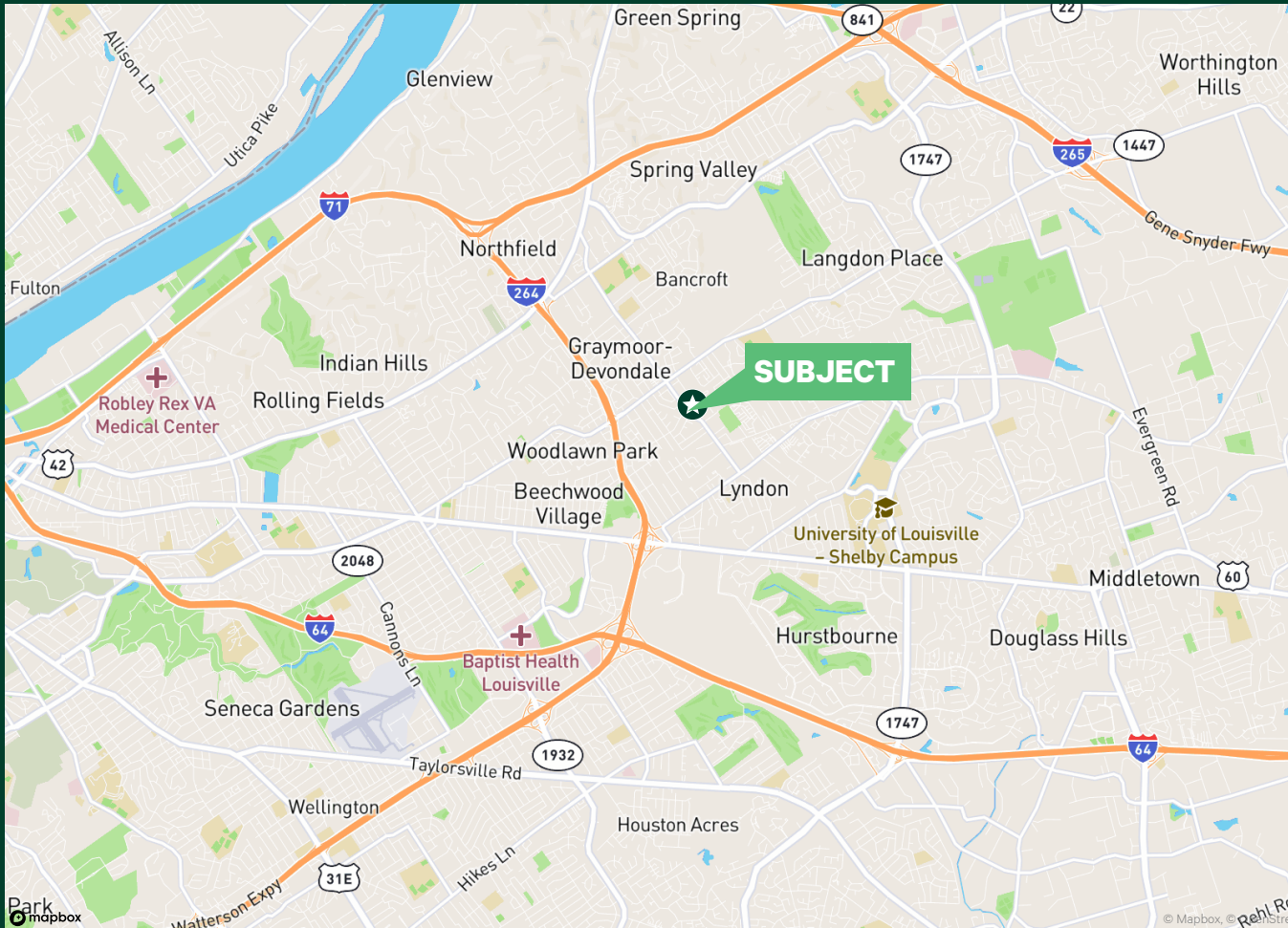
WESTPORT VILLAGE

UP TO 24,534± SF AVAILABLE

Retail Space Available

Westport Village | 1108 Lyndon Lane | Louisville, KY

For Sublease



2023 Estimated Demographics	1 Mile	2 Miles	3 Miles	4 Miles
Population	11,967	35,769	80,306	129,043
Daytime Population	9,686	40,163	100,194	161,814
Average Household Income	\$94,168	\$111,678	\$133,674	\$132,400

Contact Us

Clay Hunt

First Vice President
+1 502 412 7607
clay.hunt@cbre.com

Bryan Schwartz

Associate
+1 502 412 7635
bryan.schwartz@cbre.com

© 2024 CBRE, Inc. All rights reserved. This information has been obtained from sources believed reliable but has not been verified for accuracy or completeness. CBRE, Inc. makes no guarantee, representation or warranty and accepts no responsibility or liability as to the accuracy, completeness, or reliability of the information contained herein. You should conduct a careful, independent investigation of the property and verify all information. Any reliance on this information is solely at your own risk.