

1 309-1313
W LINCOLN ST • PHOENIX, AZ



COMMERCIAL PROPERTIES INC.

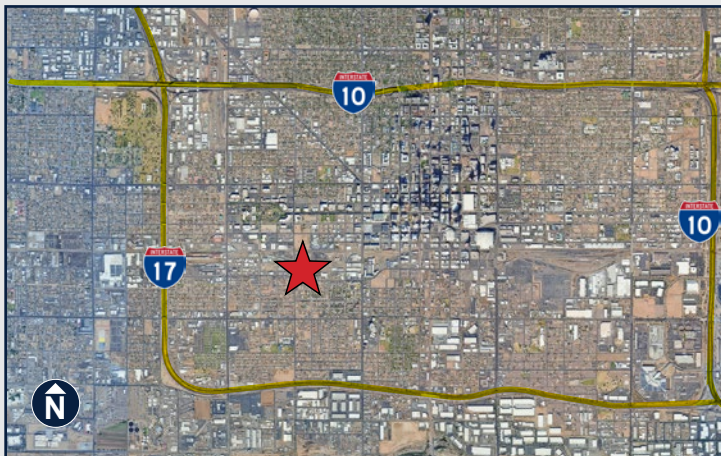
Locally Owned. Globally Connected. CORFAC INTERNATIONAL

TEMPE: 2323 W University Drive, Tempe, AZ 85281 | 480.966.2301
SCOTTSDALE: 8767 E Via de Commercio, Suite 101, Scottsdale, AZ 85258 | www.cpi.az.com



CONTRACTOR YARD FOR LEASE

\$4,250/MO/NNN



- Site Area: ±15,000 SF
- ±1,885 SF Block-Office Building W/ Storage
- 8'x8' GL Door
- 120/240 Volts - AMPS 200 - Single Phase
- Zoning: A-1 (Light Industrial)
- Fully Fenced
- Close proximity to Downtown Phoenix, Sky Harbor Airport, I-17 & I-10 Fwys
- New interior/exterior paint, new insulation, & new restroom fixtures

EXCLUSIVE CONTACTS:

JEFF HAYS
D 480.889.2552
M 602.373.8800
jhays@cpi.az.com

SAM RUTLEDGE
D 480.621.3292
M 602.397.6655
srutledge@cpi.az.com

The information contained herein has been obtained from various sources. We have no reason to doubt its accuracy; however, J & J Commercial Properties, Inc. has not verified such information and makes no guarantee, warranty or representation about such information. The prospective buyer or lessee should independently verify all dimensions, specifications, floor plans, and all information prior to the lease or purchase of the property. All offerings are subject to prior sale, lease, or withdrawal from the market without prior notice.

11 14 25



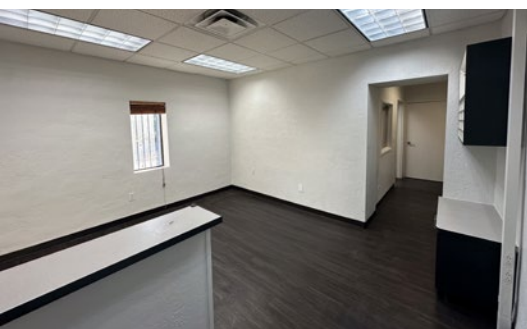
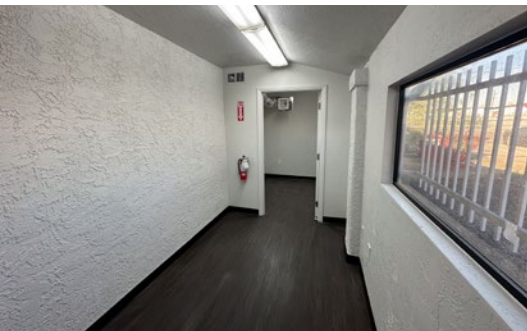
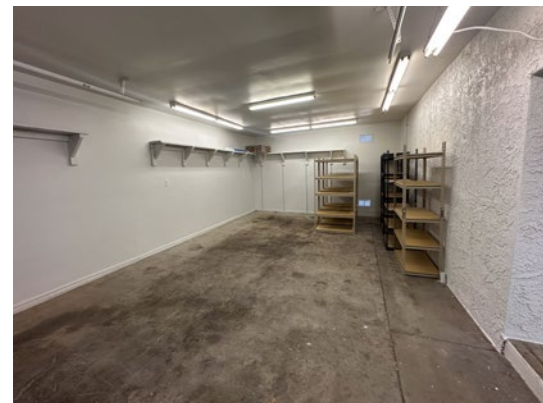
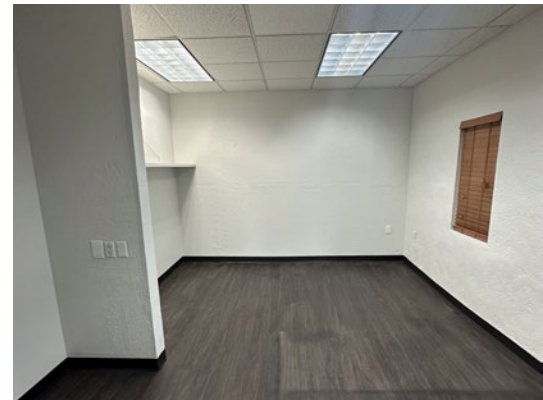
COMMERCIAL PROPERTIES INC.

Locally Owned. Globally Connected. CORFAC INTERNATIONAL

1309-1313
W LINCOLN ST • PHOENIX, AZ

 **COMMERCIAL PROPERTIES INC.**
Locally Owned. Globally Connected. CORFAC INTERNATIONAL

TEMPE: 2323 W University Drive, Tempe, AZ 85281 | 480.966.2301
SCOTTSDALE: 8767 E Via de Commercio, Suite 101, Scottsdale, AZ 85258 | www.cpi.az.com



EXCLUSIVE CONTACTS:

JEFF HAYS
D 480.889.2552
M 602.373.8800
jhays@cpi.az.com

SAM RUTLEDGE
D 480.621.3292
M 602.397.6655
srutledge@cpi.az.com

The information contained herein has been obtained from various sources. We have no reason to doubt its accuracy; however, J & J Commercial Properties, Inc. has not verified such information and makes no guarantee, warranty or representation about such information. The prospective buyer or lessee should independently verify all dimensions, specifications, floor plans, and all information prior to the lease or purchase of the property. All offerings are subject to prior sale, lease, or withdrawal from the market without prior notice.

11 14 25

 **COMMERCIAL PROPERTIES INC.**
Locally Owned. Globally Connected. CORFAC INTERNATIONAL