

33875 CAPITOL STREET  
LIVONIA, MICHIGAN

INDUSTRIAL FOR SALE  
11,298 Square Feet Available



**SIGNATURE  
ASSOCIATES**  
KNOW SIGNATURE | KNOW RESULTS

**MOVE-IN READY BUILDING**



## PROPERTY FEATURES

- 11,298 square feet available
- 1,700 square feet office
- 19' – 20' clear height
- (1) 12' x 14' grade level door, (1) truckwell
- (2) 5-ton cranes
- 1000 amps, 280 volts power
- High image, move-in ready building with additional office area that can remain or be converted to warehouse
- Features include (2) office restrooms, (2) warehouse restrooms, painted warehouse floors and walls, side windows, new roof installed in 2020



For more information, please contact:

**JEFF LEMANSKI**  
(248) 359 0641  
jlemanski@signatureassociates.com

**CHRISTOPHER M. D'ANGELO**  
(248) 948 0109  
cdangelo@signatureassociates.com

**SIGNATURE ASSOCIATES**  
One Towne Square, Suite 1200  
Southfield, MI 48076  
www.signatureassociates.com

Information is subject to verification and no liability for errors or omissions is assumed. Price is subject to change and listing withdrawal.

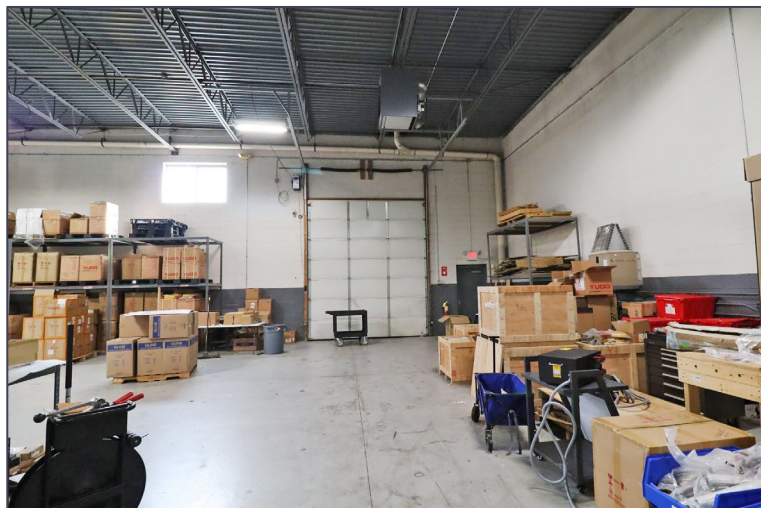
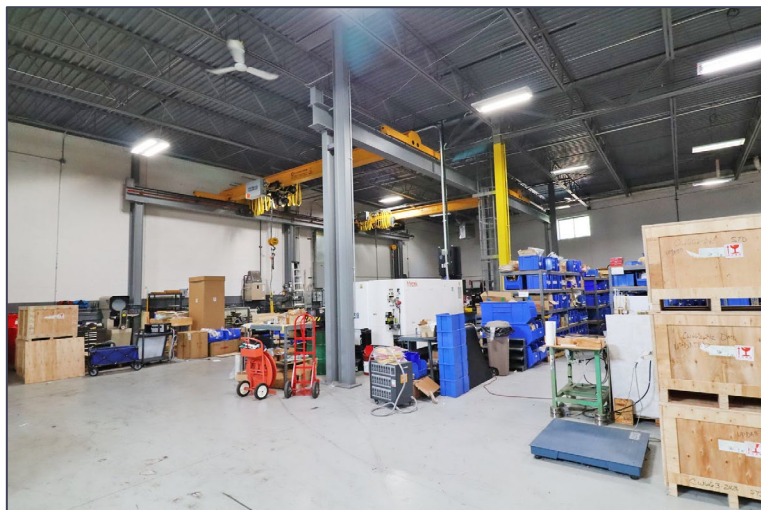


# 33875 Capitol Street – Livonia, Michigan

## Industrial For Sale

11,298  
Square Feet  
AVAILABLE

### Interior Photos



For more information, please contact:

**JEFF LEMANSKI**

(248) 359 0641

[jlemanski@signatureassociates.com](mailto:jlemanski@signatureassociates.com)

**CHRISTOPHER M. D'ANGELO**

(248) 948 0109

[cdangelo@signatureassociates.com](mailto:cdangelo@signatureassociates.com)

**SIGNATURE ASSOCIATES**

One Towne Square, Suite 1200

Southfield, MI 48076

[www.signatureassociates.com](http://www.signatureassociates.com)

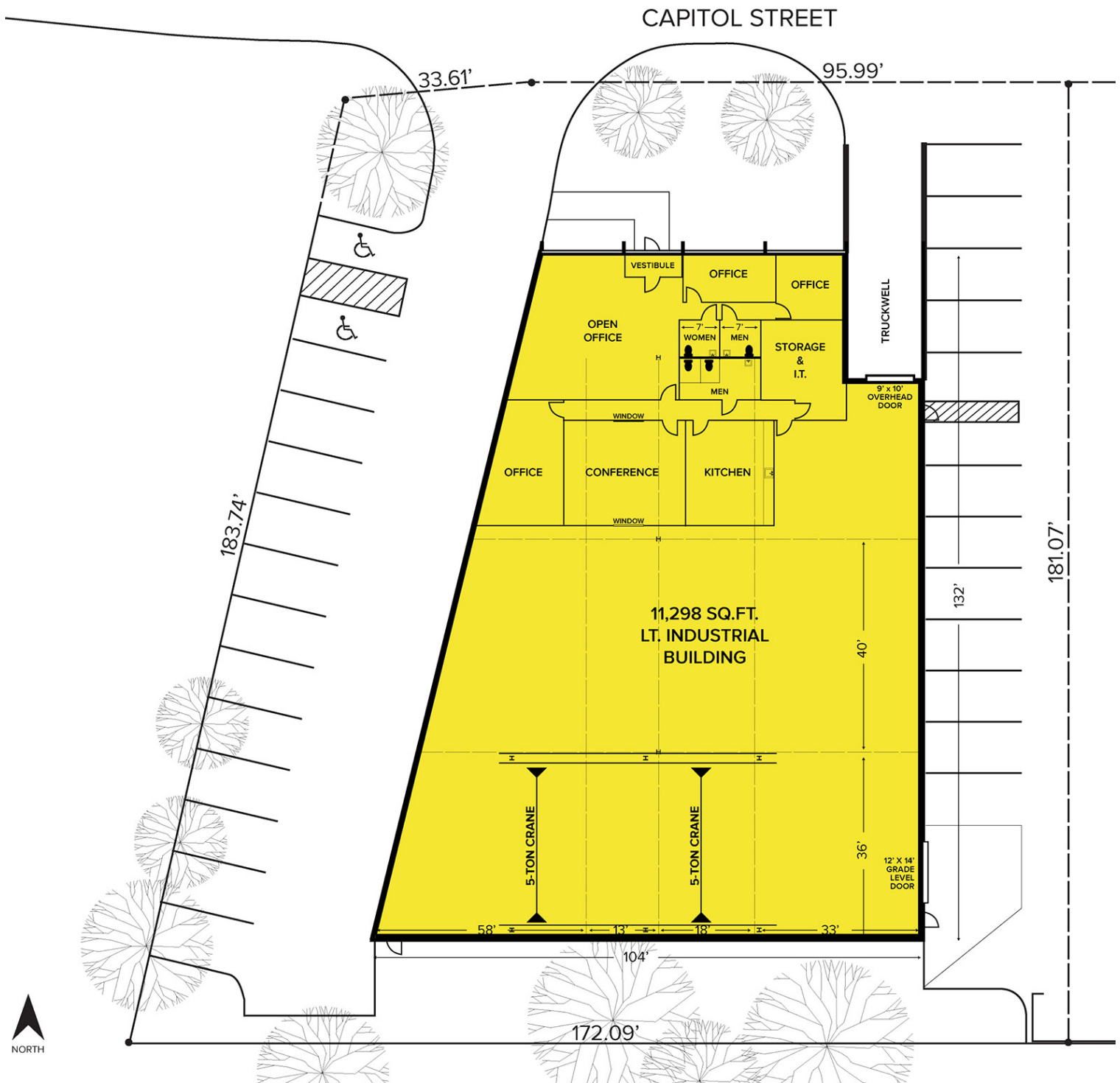


# 33875 Capitol Street – Livonia, Michigan

## Industrial For Sale

11,298  
Square Feet  
AVAILABLE

### Site Plan



For more information, please contact:

**JEFF LEMANSKI**

(248) 359 0641

[jlemanski@signatureassociates.com](mailto:jlemanski@signatureassociates.com)

**CHRISTOPHER M. D'ANGELO**

(248) 948 0109

[cdangelo@signatureassociates.com](mailto:cdangelo@signatureassociates.com)

**SIGNATURE ASSOCIATES**

One Towne Square, Suite 1200

Southfield, MI 48076

[www.signatureassociates.com](http://www.signatureassociates.com)

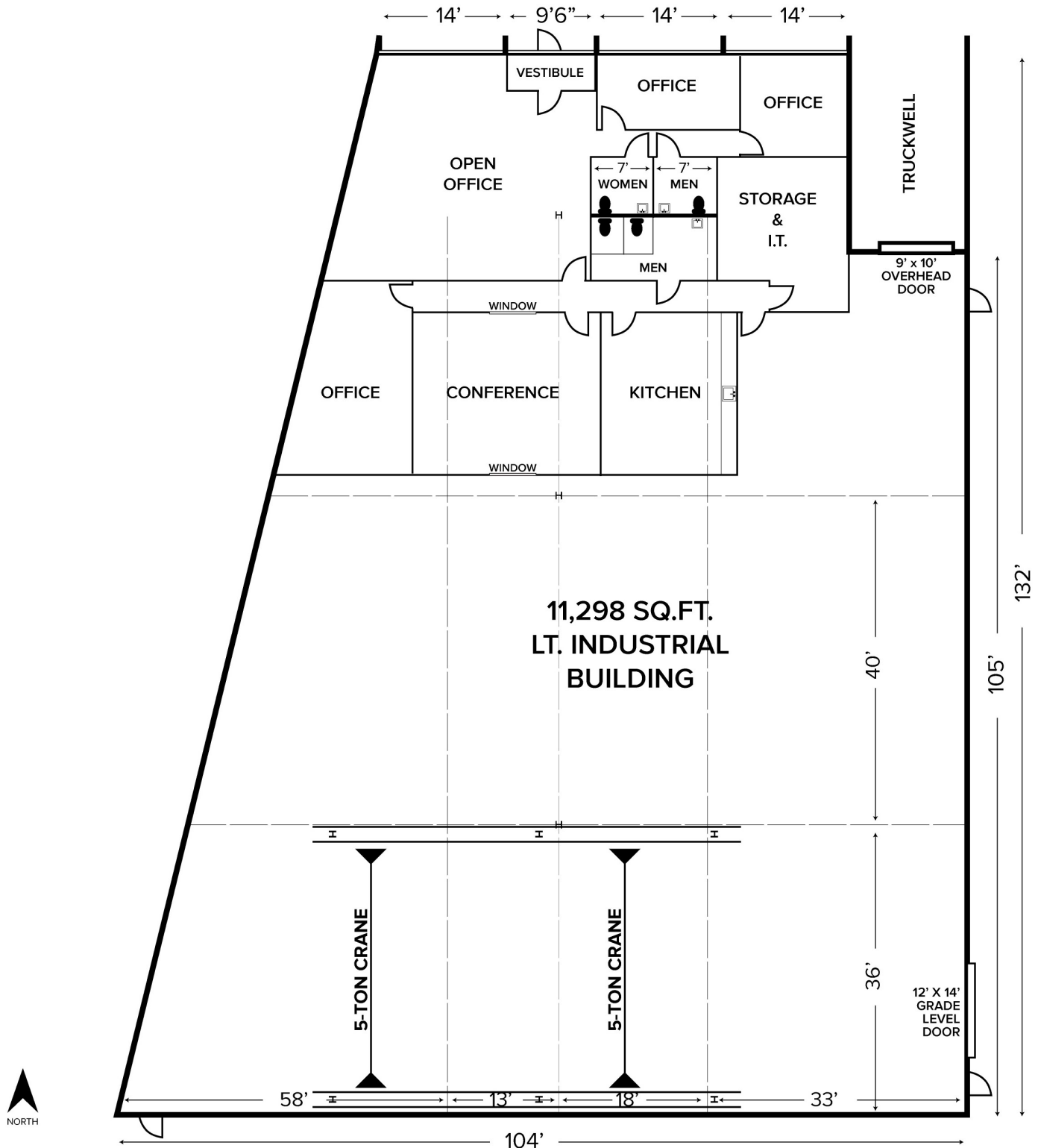
Information is subject to verification and no liability for errors or omissions is assumed. Price is subject to change and listing withdrawal.

# 33875 Capitol Street – Livonia, Michigan

## Industrial For Sale

11,298  
Square Feet  
AVAILABLE

### Floor Plan



For more information, please contact:

**JEFF LEMANSKI**

(248) 359 0641

[jlemanski@signatureassociates.com](mailto:jlemanski@signatureassociates.com)

**CHRISTOPHER M. D'ANGELO**

(248) 948 0109

[cdangelo@signatureassociates.com](mailto:cdangelo@signatureassociates.com)

**SIGNATURE ASSOCIATES**

One Towne Square, Suite 1200

Southfield, MI 48076

[www.signatureassociates.com](http://www.signatureassociates.com)



# 33875 Capitol Street – Livonia, Michigan

## Industrial For Sale

11,298  
Square Feet  
AVAILABLE

Aerial



For more information, please contact:

**JEFF LEMANSKI**  
(248) 359 0641  
[jlemanski@signatureassociates.com](mailto:jlemanski@signatureassociates.com)

**CHRISTOPHER M. D'ANGELO**  
(248) 948 0109  
[cdangelo@signatureassociates.com](mailto:cdangelo@signatureassociates.com)

**SIGNATURE ASSOCIATES**  
One Towne Square, Suite 1200  
Southfield, MI 48076  
[www.signatureassociates.com](http://www.signatureassociates.com)

Information is subject to verification and no liability for errors or omissions is assumed. Price is subject to change and listing withdrawal.