

PROFESSIONAL OFFICE PROJECT  
TWO SUITES AVAILABLE FOR LEASE  
191 SAND CREEK ROAD, BRENTWOOD, CA

## LISTING DATA

- Brentwood's Premier "Class A" Office Complex
- Built in 2005
- Suite 100: 3,985± SF - First Floor
- Suite 200: 5,282± SF - Second Floor
- Great Location with easy access to all of the commercial services, restaurants and hotels in Brentwood
- Abundant free parking
- Walking distance to local retail amenities
- High visibility location within a higher income area
- Centrally located at Hwy 4 (Brentwood Blvd.) and Sand Creek Road



## ECONOMIC DATA

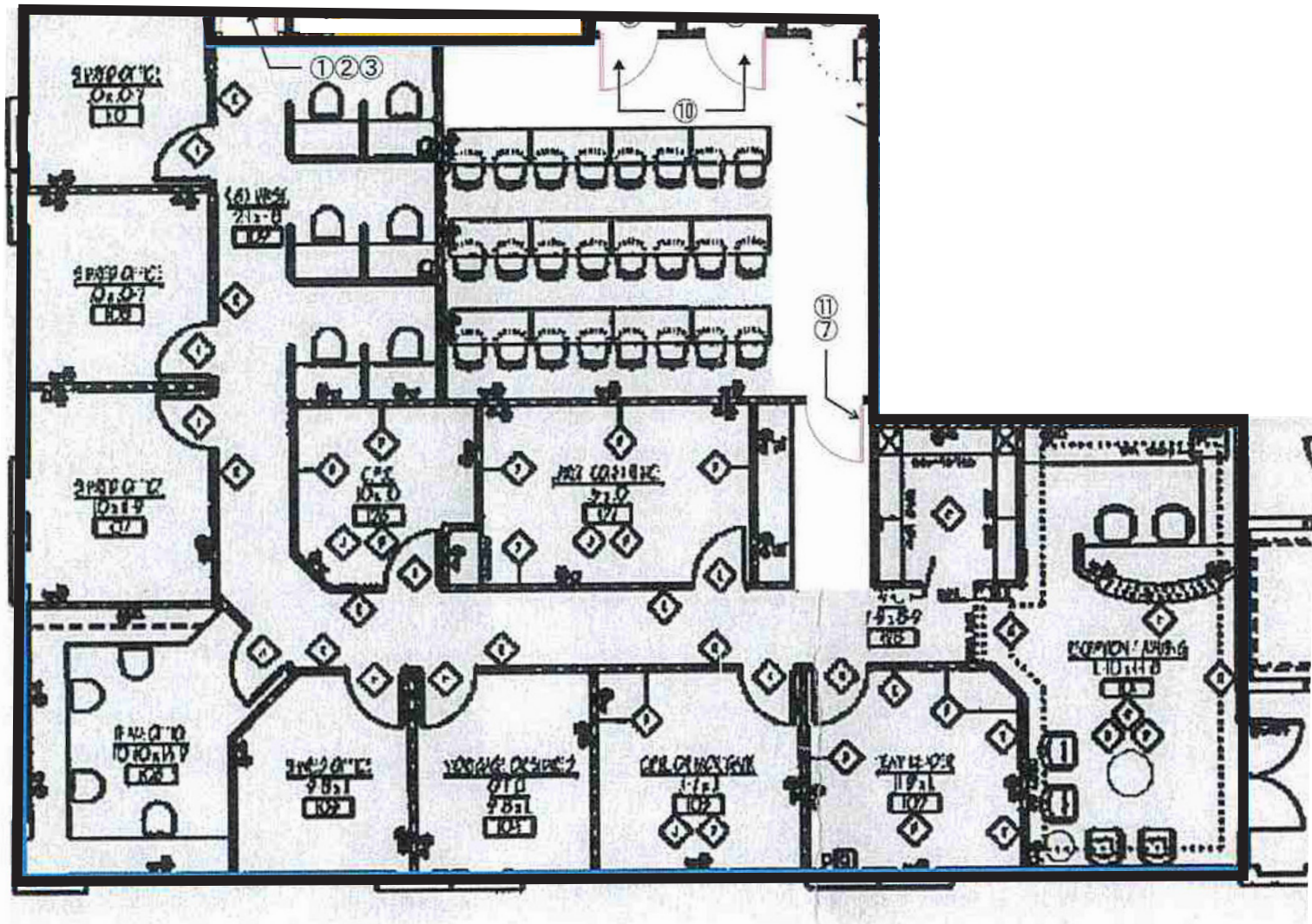
LEASE RATE: CALL AGENT FOR PRICING

### CONTACT:

Wendy Coddington, SIOR  
BRE #00592566  
wcoddington@lee-associates.com  
D 209.983.6830

PROFESSIONAL OFFICE PROJECT  
TWO SUITES AVAILABLE FOR LEASE  
191 SAND CREEK ROAD, BRENTWOOD, CA

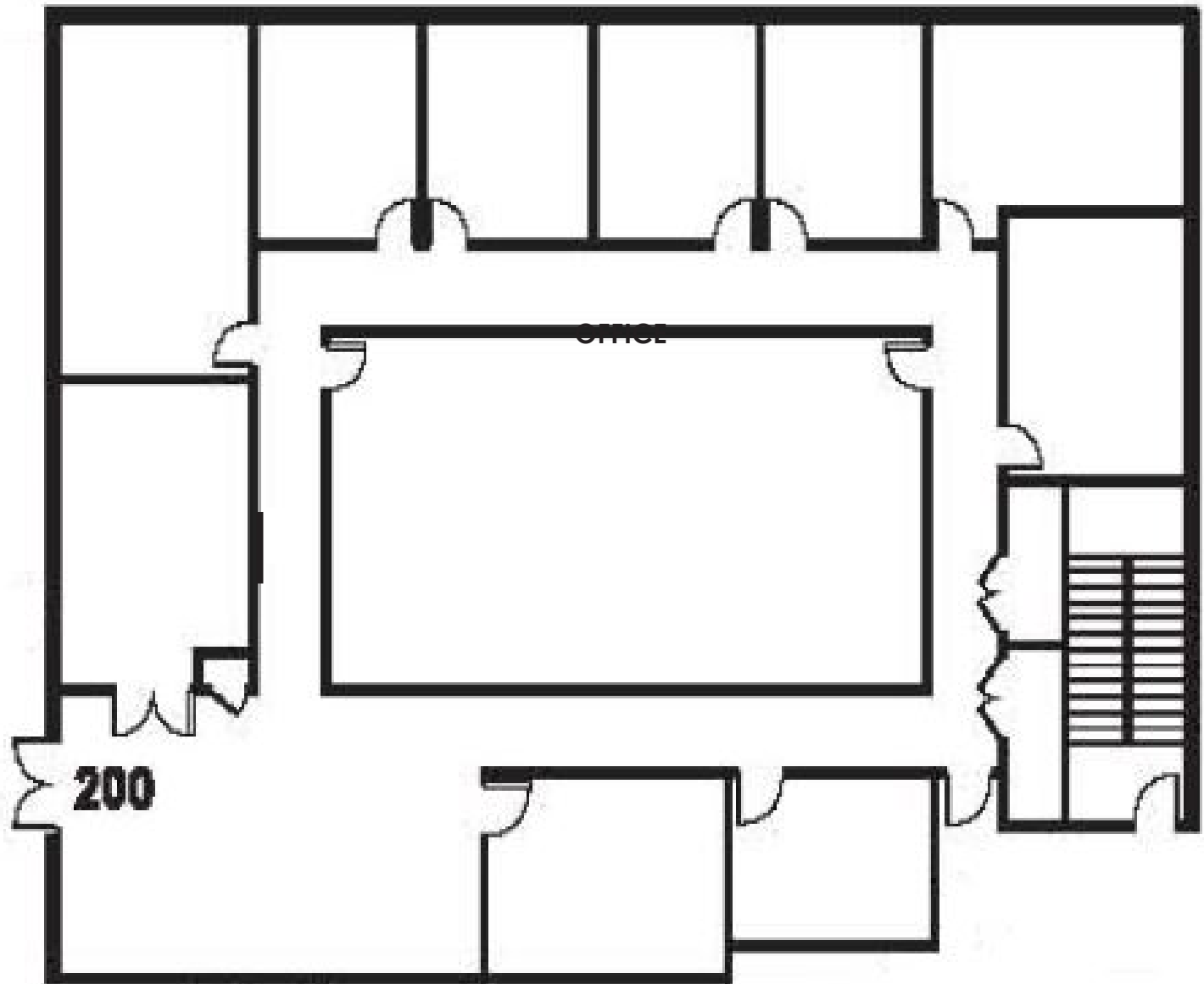
SUITE 100



PROFESSIONAL OFFICE PROJECT  
TWO SUITES AVAILABLE FOR LEASE  
191 SAND CREEK ROAD, BRENTWOOD, CA



SUITE 200



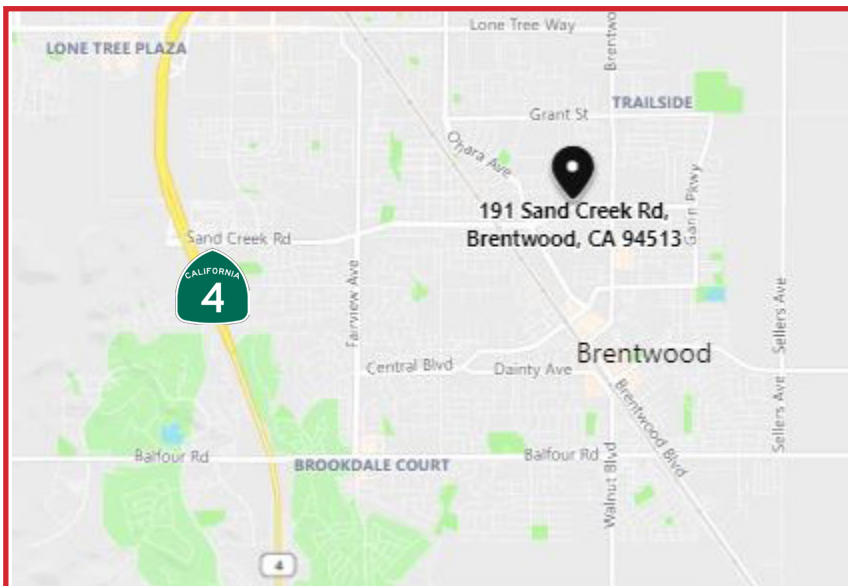
**CONTACT:**

Wendy Coddington, SIOR  
BRE #00592566  
wcoddington@lee-associates.com  
D 209.983.6830

All information furnished regarding property for sale, rental or financing is from sources deemed reliable, but no warranty or representation is made to the accuracy thereof and same is submitted to errors, omissions, change of price, rental or other conditions prior to sale, lease or financing or withdrawal without notice. No liability of any kind is to be imposed on the broker herein.



PROFESSIONAL OFFICE PROJECT  
TWO SUITES AVAILABLE FOR LEASE  
191 SAND CREEK ROAD, BRENTWOOD, CA



**CONTACT:** Wendy Coddington, SIOR  
BRE #00592566  
wcoddington@lee-associates.com  
D 209.983.6830

All information furnished regarding property for sale, rental or financing is from sources deemed reliable, but no warranty or representation is made to the accuracy thereof and same is submitted to errors, omissions, change of price, rental or other conditions prior to sale, lease or financing or withdrawal without notice. No liability of any kind is to be imposed on the broker herein.