



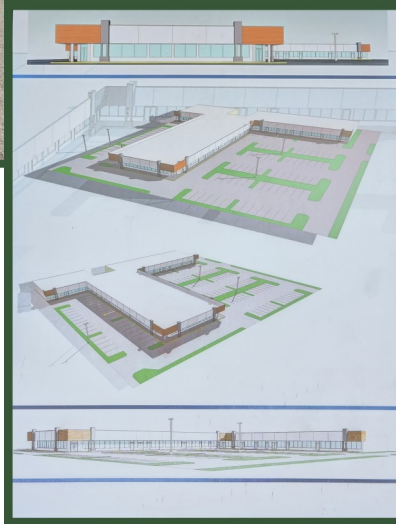
# FOR LEASE

## Pointe Plaza

3908 & 3944 NW 19 Street, Lauderdale, FL 33311

Available Retail • Medical • Office Spaces

Tested. Trusted. Tobin.



**Tobin Real Estate** is pleased to exclusively represent 3908 & 3944 NW 19 Street, Lauderdale, FL 33311 for Lease. This prime 38,261 SF Retail Center sits on 2.64 acres located in the City of Lauderdale. It is conveniently located adjacent to State Road 7 and N.W. 19th Street. The Center has been renovated with a beautiful new façade and monument signage. It offers easy ingress and egress and plenty of parking on all sides. The population within a 3-mile radius is 196,367, 5-mile radius is 491,550 and 10-mile radius is 1,298,202. Surrounding retailers include Walmart Supercenter, Greico Chevrolet, Rick Case Hyundai, Massey-Yardley Dodge-Chrysler-Jeep, Plantation Ford, Key Food Supermarket, Planet Fitness, Wendy's, Lauderdale Mall, Dollar General, Auto Zone, Dollar Tree, Foot Locker, Bright Star Credit Union, Crafty Crab, World Soccer Uniforms, Estrella Insurance, Dunkin Donuts, Wells Fargo, Truist, Firestone Auto Care, Green Light Car Wash, Enterprise Rent-A-Car and many more.

	1 mi	3 mi	5 mi
Population	30,442	196,367	491,550
Median HH Income	\$47,826	\$60,398	\$74,780
Median Age	36.4	36.9	39
Households	11,551	71,457	197,600

**Louie Granteed**  
 Senior VP of Real Estate  
 1101 Ben Tobin Drive  
 Hollywood, Florida 33021  
 954-868-4163

LGranteed@TobinRealEstate.com