

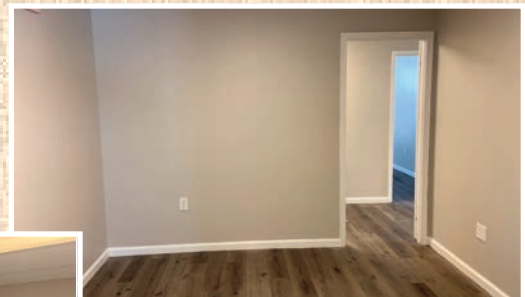
FOR LEASE

959 Bristol Pike (Rt. 13) • Bensalem, PA 19020

1200/1300 Sq. Ft. Office/Flex Units

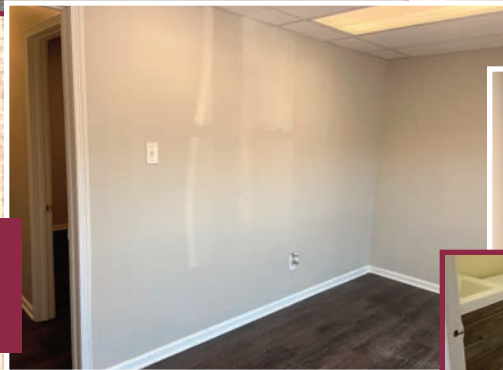
(Behind Grandview Plaza Shopping Center)

**and on the Retail Side a
2400 Sq. Ft. Walk-Up 2nd Floor Office**



*Office/Flex Units
behind the Shopping
Strip*

**ALL Newly
Renovated!**



- **5 Individual Office/Flex units with differing floor plans. Choose the one that works for you!**
- **New walls, bathroom(s), lights and flooring. ALL are HVAC served!**
- **Perfect for a professional office or contractor user. 2 of the units have DOUBLE DOORS for wide deliveries!**
- **1 mile from Woodhaven I-95 exit.**



**Grandview Shopping Strip Facing Bristol Pike
Office Units are Behind this Strip**

Real Estate Development • Brokerage • Management

103 Lakeside Drive • Southampton, PA 18966

215-364-1000 Fax: 215-364-1610

neil@mbarryschultzandco.com janell@mbarryschultzandco.com

Listed subject to errors, changes in price, prior sale, rent and withdraw without notice

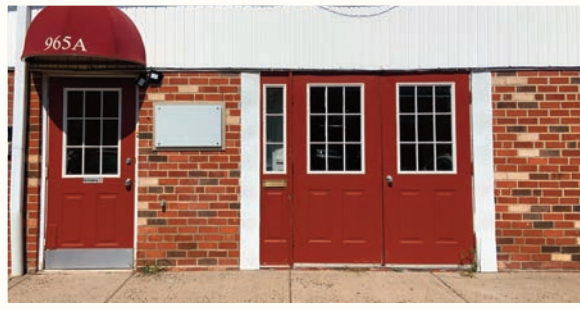


M. BARRY

SCHULTZ
AND CO.

Unit 965A - 1300 Sq. Ft. Office/Flex Unit

(Behind Grandview Plaza Shopping Center)



OFFICE/FLEX space with front open area and a room in the back with 1 private office. Shelving along 1 wall and a small alcove to work at on the other side. One door to walk-in from the parking lot and a "double door" that opens to the parking lot area. There is one additional unit (979A) that has a similar double door set-up.

2400 Sq. Ft. Walk-Up 2nd Floor Office

Parking and Entrance on the front Retail Side facing Bristol Pike



ALL NEW office space with a large open area and 7 private offices surrounding the open space. WINDOWS in each of the offices. Excellent working atmosphere. 2 bathrooms and a large storage closet.

Real Estate Development • Brokerage • Management

103 Lakeside Drive • Southampton, PA 18966

215-364-1000 Fax: 215-364-1610

neil@mbarryschultzandco.com janel@mbarryschultzandco.com

Listed subject to errors, changes in price, prior sale, rent and withdraw without notice



M. BARRY

SCHULTZ
AND Co.