

Turn-Key Medical Office Suites for Lease

1044 88TH STREET | LOUISVILLE, CO 80027
SUITES 100, 102 & 105

100: 1,017 SF

102: 1,451 SF

105: 2,305 SF

Rate: \$22.00 NNN

Available Immediately

WHAT'S YOUR ANGLE?

For us, it's these medical suites located at 1044 S 88th Street in Louisville. These turn-key suites are ready for new tenants to take their attractive layouts to the next level. They are perfect for any providers or practitioners looking for space in a med-friendly building which just so happens to be a stone's throw to Avista Hospital and other medical offices. No funny business in this fabulously located building, we promise—just a couple of great spaces waiting for a couple of great tenants.

PROPERTY HIGHLIGHTS

- Great Louisville location
- Zoned for medical use
- Turn-key medical offices ready for move in now
- Offers ample parking for patients



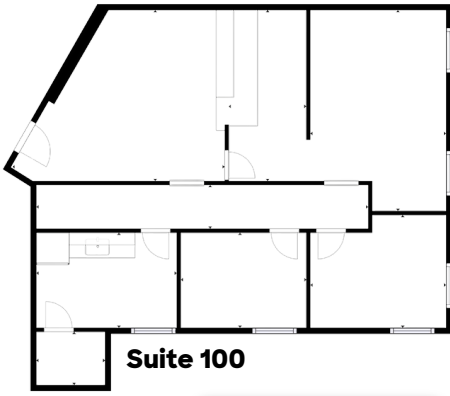
CLICK HERE
for 100 virtual tour

CLICK HERE
for 102 virtual tour

CLICK HERE
for 105 virtual tour

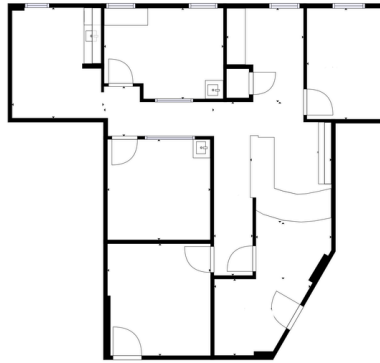


LEARN MORE ABOUT THIS PROPERTY
MarketRealEstate.com



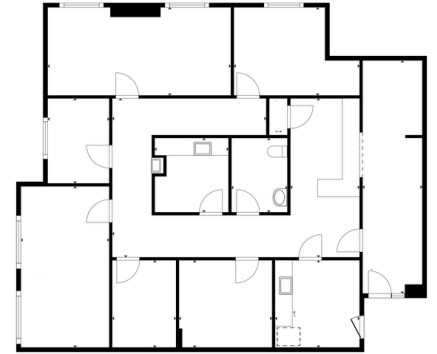
Suite 100

[CLICK HERE](#)
for 100 virtual tour



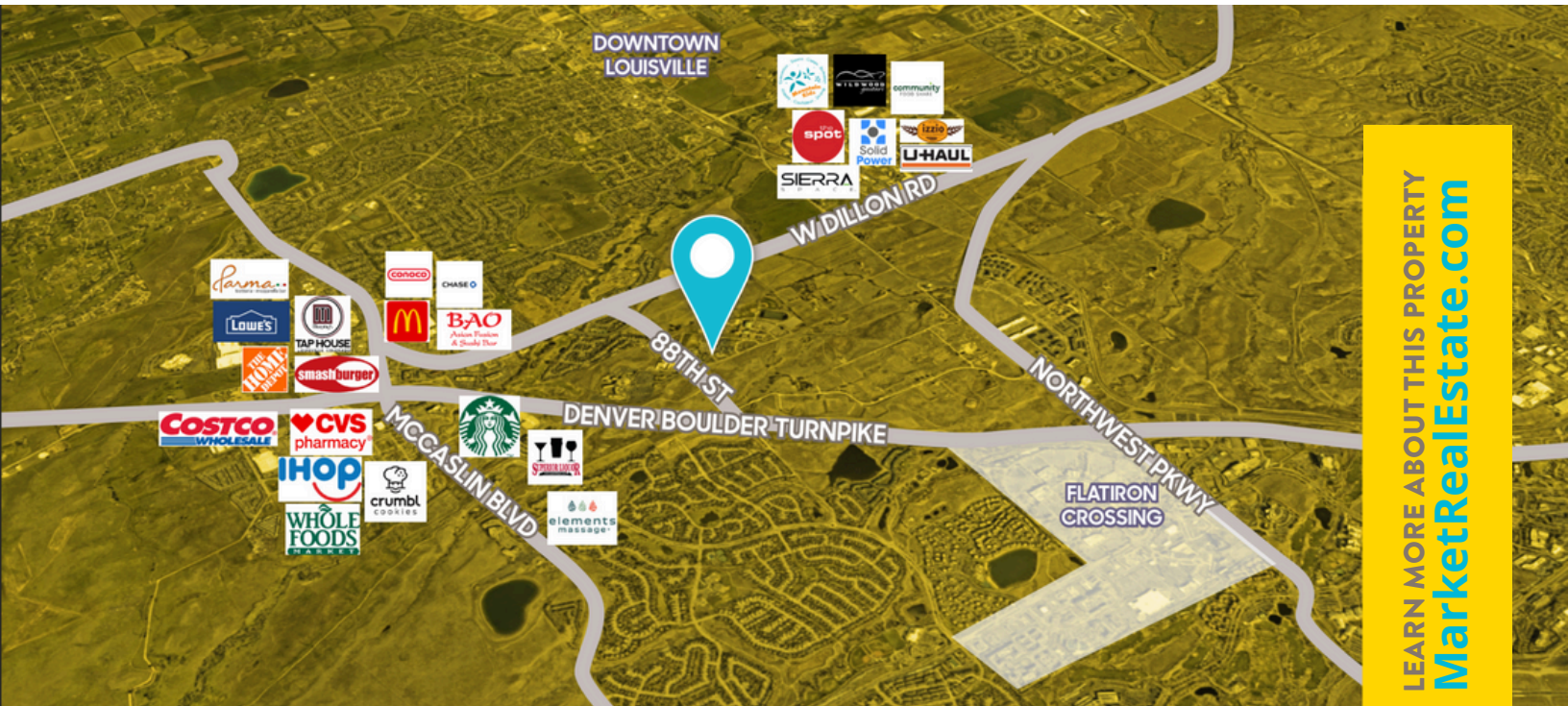
Suite 102

[CLICK HERE](#)
for 102 virtual tour



Suite 105

[CLICK HERE](#)
for 105 virtual tour



LEARN MORE ABOUT THIS PROPERTY
MarketRealEstate.com

TODD WALSH, CCIM

303 444 5040
Todd@MarketBoulder.com

NATE LITSEY

303 444 4024
Nate@MarketBoulder.com

