

ASHBY LUMBER



A well-established business in Ashby, NE with unlimited potential.

SCOTT SAULTS

Associate Broker

Scott's Cell: 308-289-1383

Email: scott@lashleyland.com

PROPERTY HIGHLIGHTS

List Price

~~\$175,000~~

\$140,000

Location

101 Main St., Ashby, NE 69333

Legal Description

0 24 40 LOTS 1 TO 15 INC & LOT 17 EXC N5', BLOCK1 ASHBY FIRST SUBDIVISION

0 24 40 LOTS 10 AND 12 BLOCK 2 ASHBY FIRST SUBDIVISION

Taxes - Estimated

\$353.78

Property Summary

Here is an established business in the Sandhills of Nebraska. Ashby Lumber is a business in the quiet little Sandhills town called Ashby, Nebraska. Traditionally it is used as a lumber yard, hardware store, and a flower shop by a couple who wants to retire. The combined businesses have served them well.

New and fresh ideas are up to the buyers imagination. Maybe restore the old for a new B&B or other ideas you may have. The building could be remodeled into apartments or a home with storage units in the outbuildings. This area needs all of these amenities.

The building comes with inventory, private water, well, and several outbuildings. There is a lot across the street that has a small garage and large lawn. This area has a need for small businesses, and has great support from the local residents. The business is close to area churches, grocery store, school, and post office. Call Scott for more info and a tour of this business.

All information herein is from sources deemed reliable, however the accuracy is not guaranteed by Lashley Land and Recreational Brokers, Inc., seller or agent. Offering is subject to error, omissions, prior sale, price change or withdrawal without notice.

SCOTT SAULTS

Associate Broker

Scott's Cell: 308-289-1383

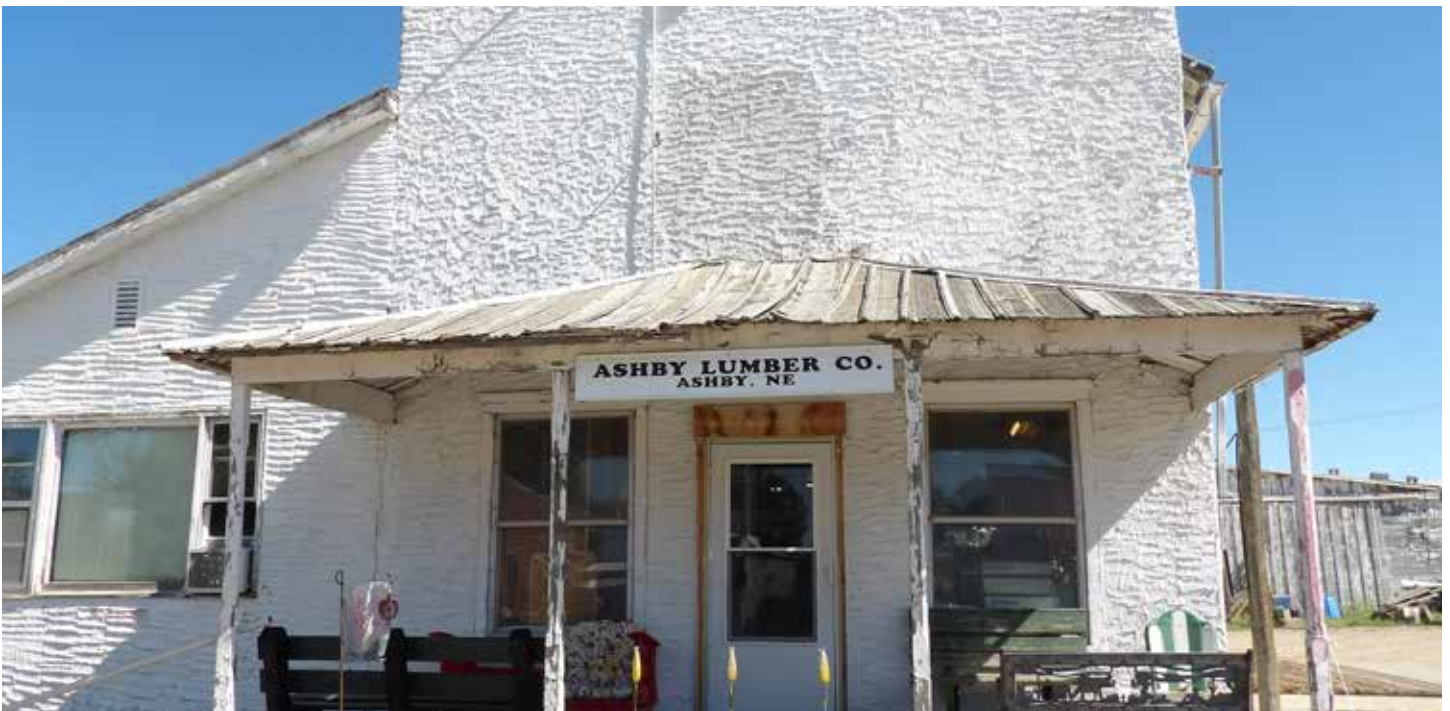
Email: scott@lashleyland.com

AERIAL MAP



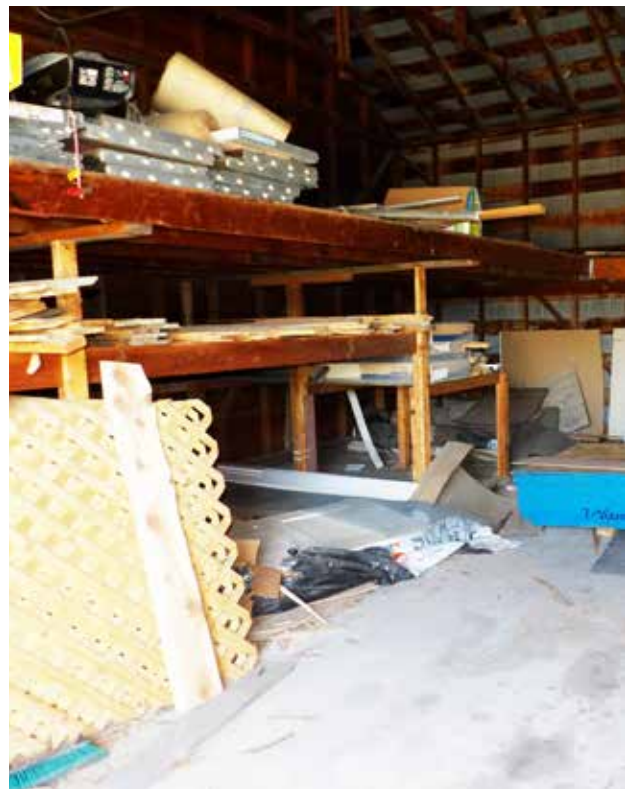
Boundary lines are estimates - Map for illustration only

PROPERTY IMAGES

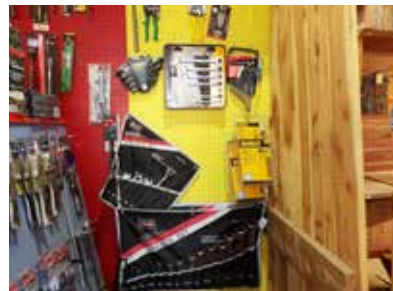
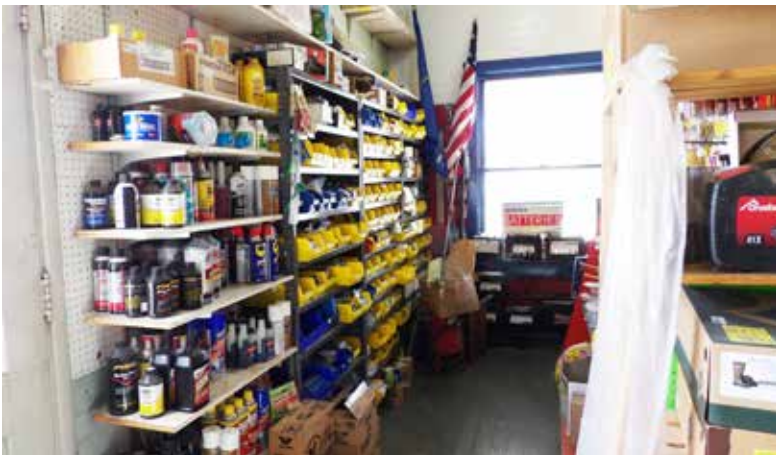


SCOTT SAULTS
Associate Broker
Scott's Cell: 308-289-1383
Email: scott@lashleyland.com

PROPERTY IMAGES



PROPERTY IMAGES



SCOTT SAULTS
Associate Broker
Scott's Cell: 308-289-1383
Email: scott@lashleyland.com

PROPERTY IMAGES





NEBRASKA EXPERTS, NATIONAL EXPOSURE

Contact Information

Office: 308-532-9300

Fax: 308-532-1854

Email: info@lashleyland.com

Website: LashleyLand.com

Mike Lashley, Owner|Broker

Amy Lashley-Johnston, Scott Saults, Skip Marland, Jordan Maassen, April Good, Jon Farley, Tami Timmerman-Lashley, Randy Helms, Dodi Osburn, Bill Grant, Shane Mauch, Jake McQuillen, Brandi Housman, Leala Jimerson, Stephanie Miller, DeAnn Vaughn, Ann Gray, and Jake Hopwood

Like us on Facebook

[Facebook.com/LashleyLand](https://www.facebook.com/LashleyLand)

2218 E. Walker Road • North Platte, NE 69101

SCOTT SAULTS

Associate Broker

Scott's Cell: 308-289-1383

Email: scott@lashleyland.com