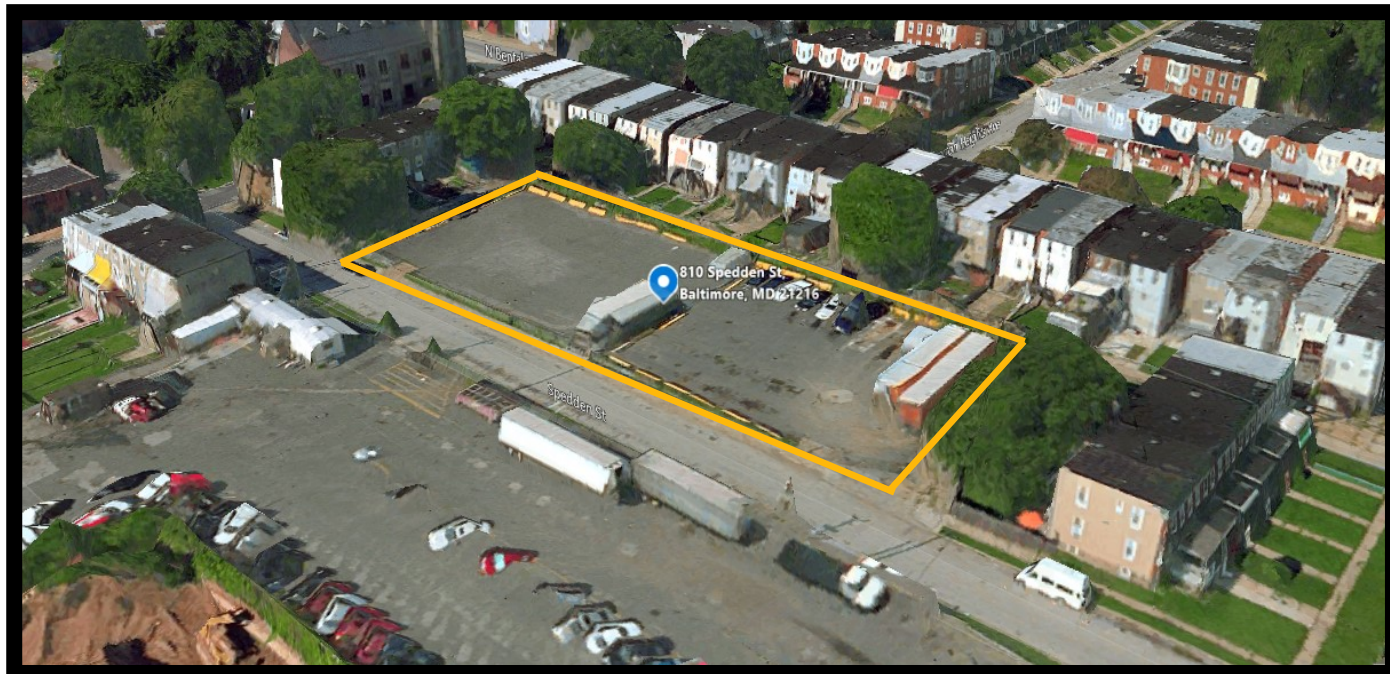




GOLD AND COMPANY, LLC



810 Spedden St. Baltimore, MD 21216

Gold And Company, LLC

**5601 Newbury St.
Baltimore, MD 21209**

**Jim Chivers
Cell: 443.928.7522
jim@goldcommercial.net
Office: 410.578.1300
www.goldcommercial.net**

- **Lot Available**
- **0.59 Acre**
- **Located in Qualified Opportunity Zone
and Hub Zone**
- **West Baltimore City**
- **Fenced Lot**
- **Paved and Lit Lot**
- **Call For More Information**

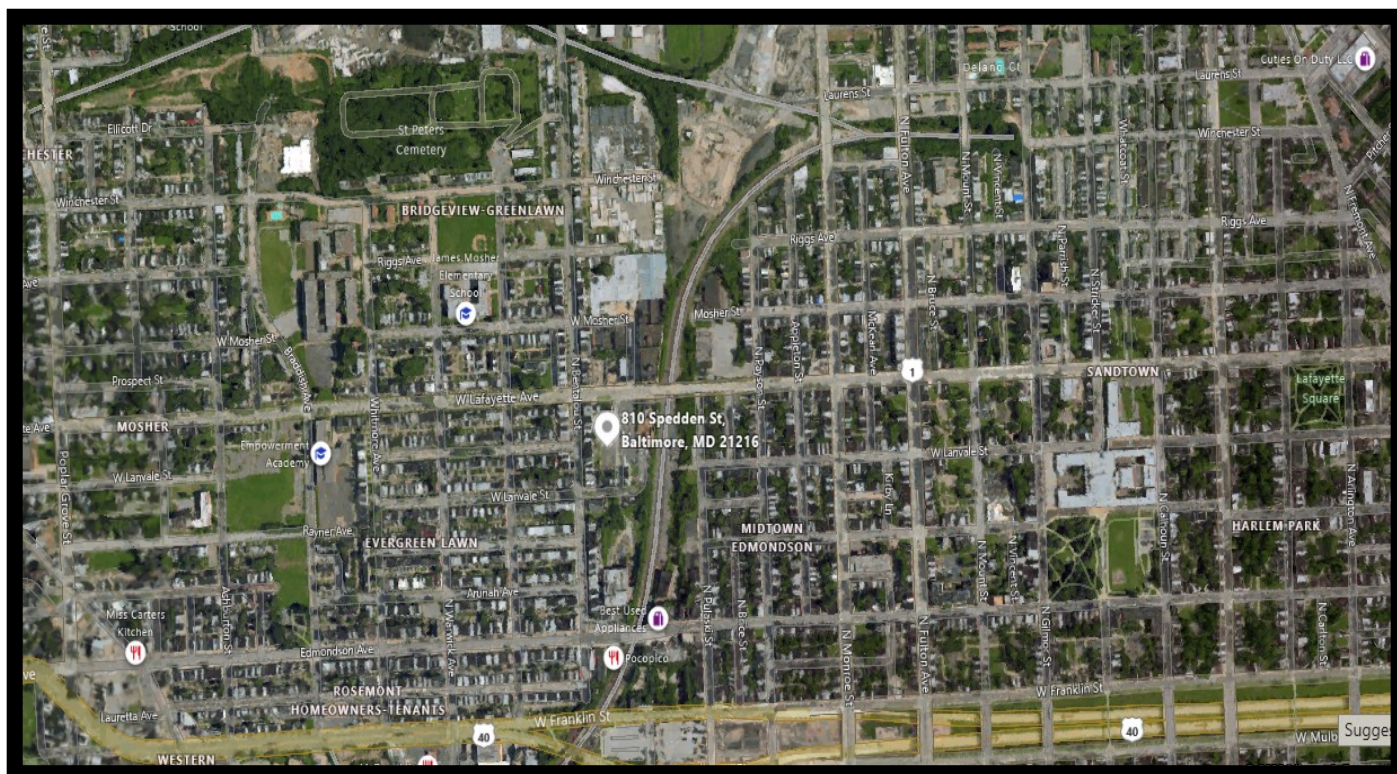


Gold And Company

Commercial Real Estate in the Baltimore Metropolitan Area

810 Spedden St. Baltimore, MD 21216

Aerial View



Jim Chivers
Gold And Company, LLC
5601 Newbury St.
Baltimore, MD 21209

410.578.1300 (Office)
443.928.7522 (Cell)
www.goldcommercial.net

This property offering is subject to change without notice. All information is deemed reliable but not guaranteed.