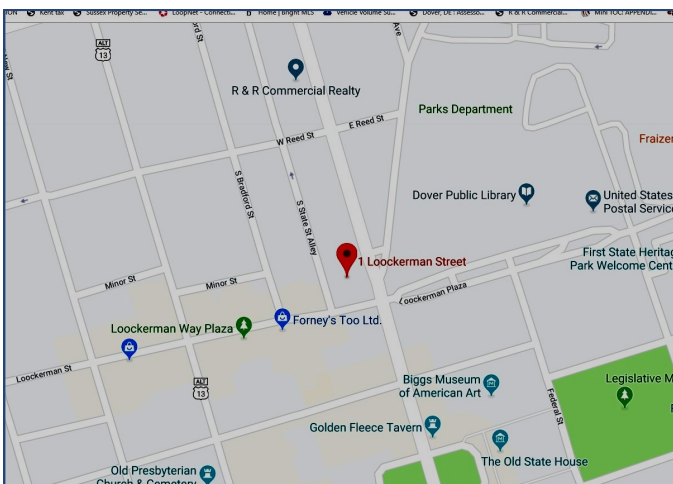


For Lease



1 W. Lookerman St.

Dover, DE



Lookerman Exchange

⇒ Retail Space Available

Suite 1 - 2,181+/- SF

Suite 2 - 1,194+/- SF

Suite 3 - 2,000+/- SF

Suite 4 - 1,739+/- SF

⇒ Lease Price: \$14 - \$16 psf NNN

Demographics	1 Mile	3 Miles	5 Miles
Population	11,449	47,210	70,090
Median Income	\$51,090	\$61,936	\$51,609

For more information contact:

Cindy Yencer

302-222-2250

cindy869@gmail.com

All information contained herein is believed to be accurate, however was obtained from third parties and R & R Commercial Realty, Inc. does not warrant as to the accuracy submitted, subject to changes or modification without notice. Listing Broker represents the sellers interest.

R&R Commercial Realty

46 South State Street
Dover, Delaware 19901

www.RandRCommercialRealty.com

302-674-3400 (Office)

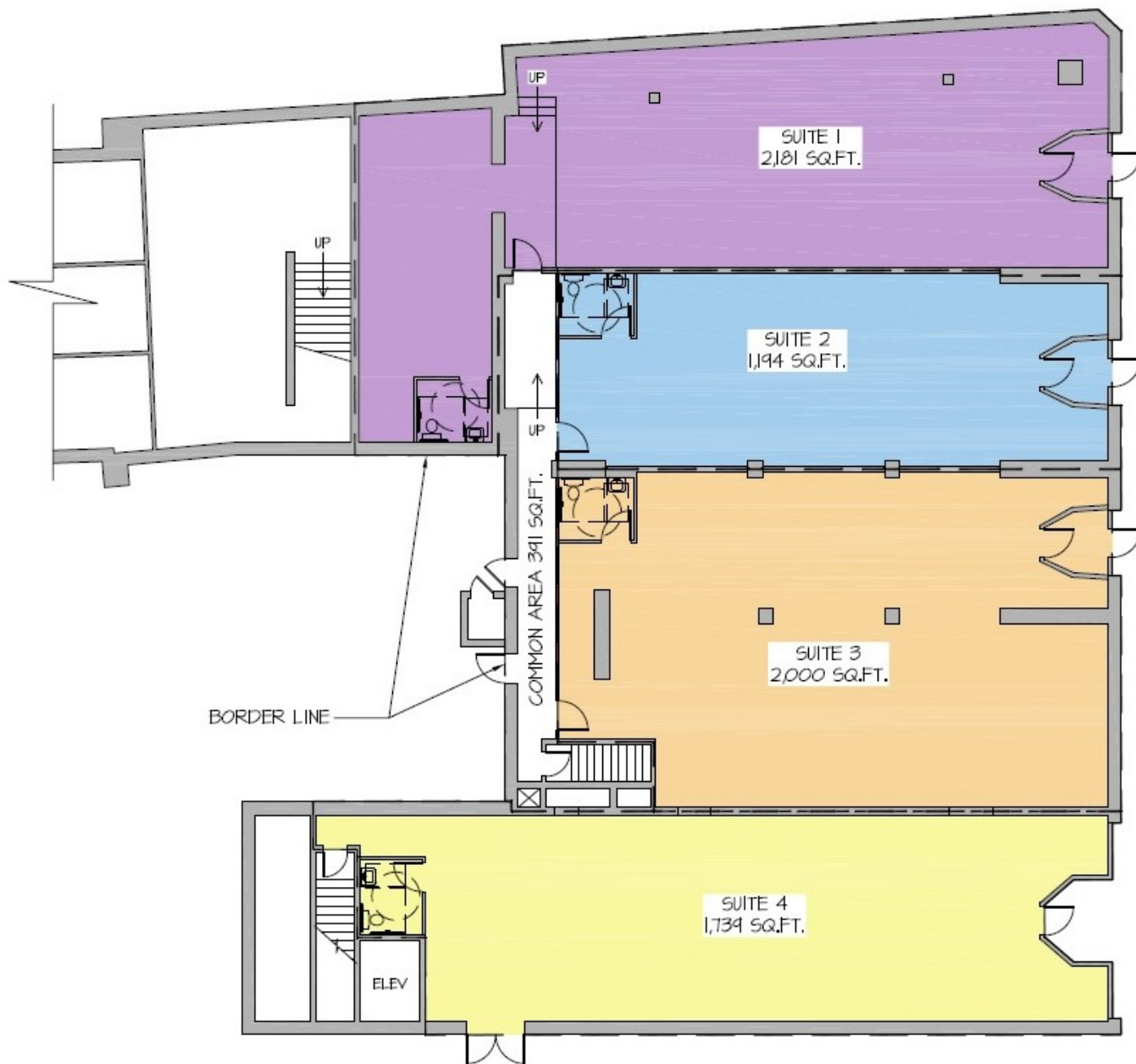
302-674-8479 (Fax)

For Lease



1 W. Lookerman St.

Dover, DE



For more information contact:

Cindy Yencer

302-222-2250

cindy869@gmail.com

All information contained herein is believed to be accurate, however was obtained from third parties and R & R Commercial Realty, Inc. does not warrant as to the accuracy submitted, subject to changes or modification without notice. Listing Broker represents the sellers interest.

R&R Commercial Realty

46 South State Street
Dover, Delaware 19901

www.RandRCommercialRealty.com

302-674-3400 (Office)
302-674-8479 (Fax)