

35445 & 35449 Groesbeck Hwy

Clinton Township, Michigan

2,880 SF - 7,930 SF Available



Contact Us

Joe Kemp

Vice President

+1 248 404 7257

joe.kemp@cbre.com

Jake Ginster

Senior Associate

+1 248 351 2082

jake.ginster@cbre.com

Jared Sherman

Associate

+1 248 978 6593

jared.sherman@cbre.com

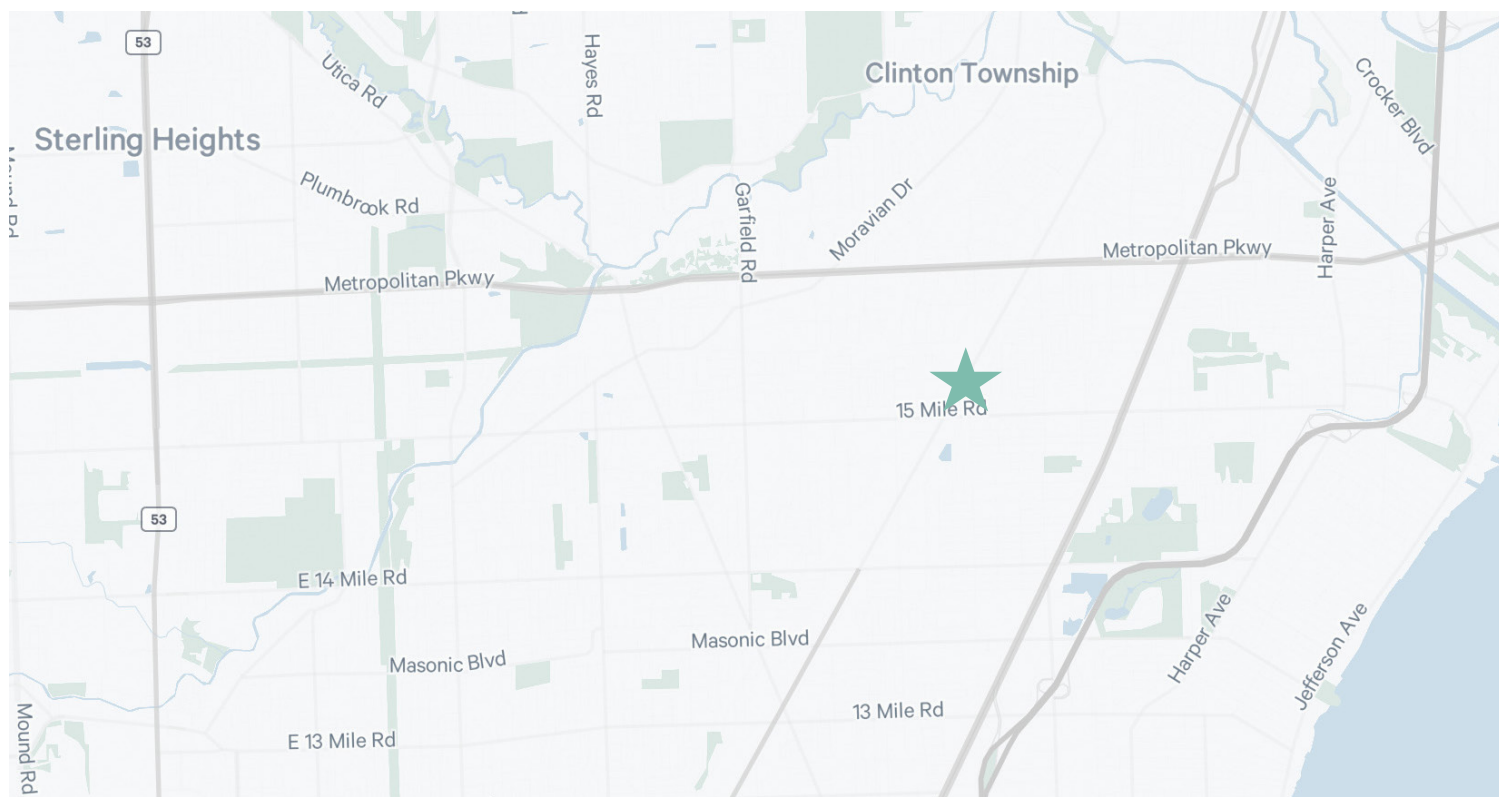
Property Overview

35445 Groesbeck

- + 5,050 SF Available
 - 250 SF Office
 - 4,800 SF Shop
- + One (1) 12'x14' Grade Level Door
- + Radiant Heat
- + Lease Rate: \$3,500/Month Gross
 - Utilities Not Included

35449 Groesbeck

- + 2,880 SF Available
- + 14' Clear
- + One (1) 12'x14' Grade Level Door
- + 38' Clear Span
- + Lease Rate: 2,000/Month Gross
 - Utilities Not Included



35445 & 35449 Groesbeck Hwy
Clinton Township, MI

For Lease

Aerial



Contact Us

Joe Kemp

Vice President

+1 248 404 7257

joe.kemp@cbre.com

Jake Ginster

Senior Associate

+1 248 351 2082

jake.ginster@cbre.com

Jared Sherman

Associate

+1 248 978 6593

jared.sherman@cbre.com

© 2025 CBRE, Inc. All rights reserved. This information has been obtained from sources believed reliable, but has not been verified for accuracy or completeness. You should conduct a careful, independent investigation of the property and verify all information. Any reliance on this information is solely at your own risk. CBRE and the CBRE logo are service marks of CBRE, Inc. All other marks displayed on this document are the property of their respective owners, and the use of such logos does not imply any affiliation with or endorsement of CBRE. Photos herein are the property of their respective owners. Use of these images without the express written consent of the owner is prohibited.

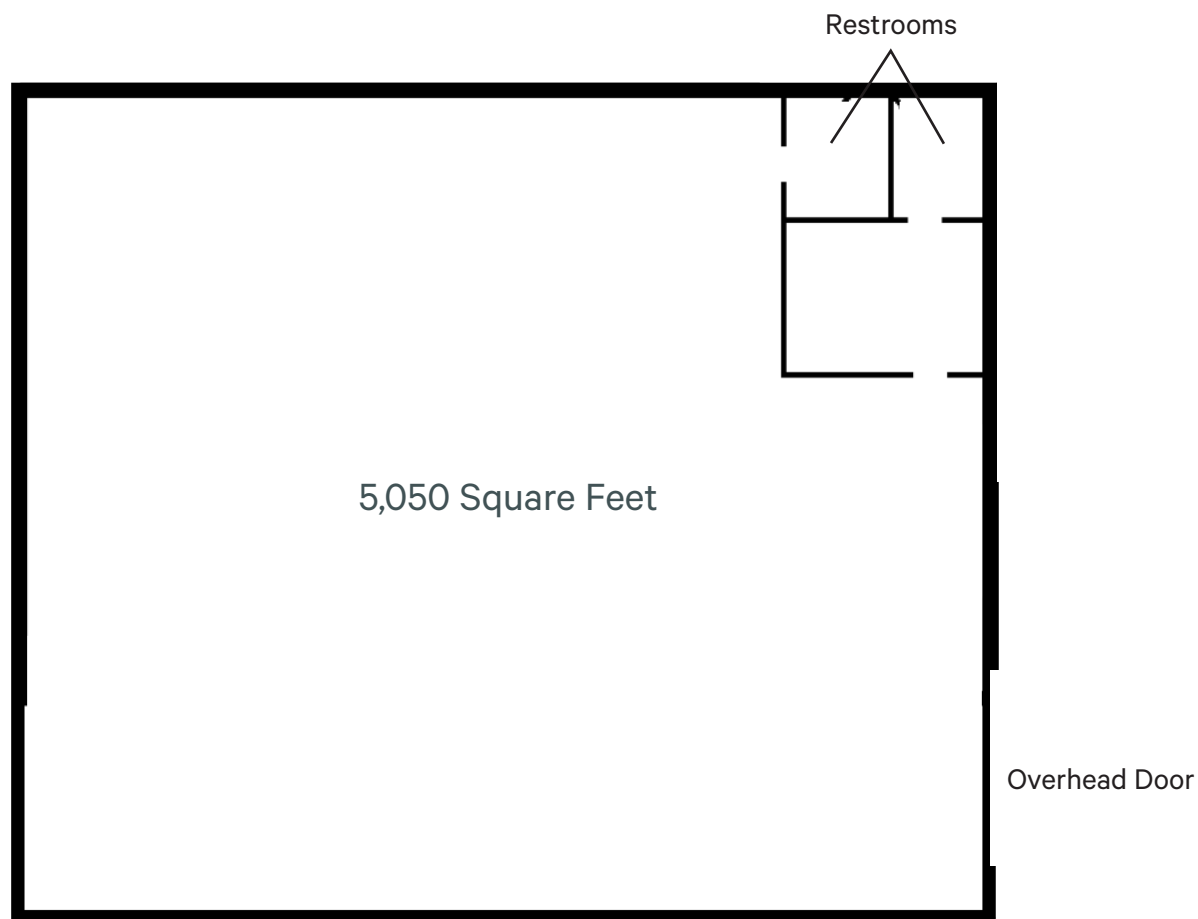
www.cbre.com/detroit

CBRE

35445 Groesbeck Hwy
Clinton Township, MI

For Lease

Floor Plan



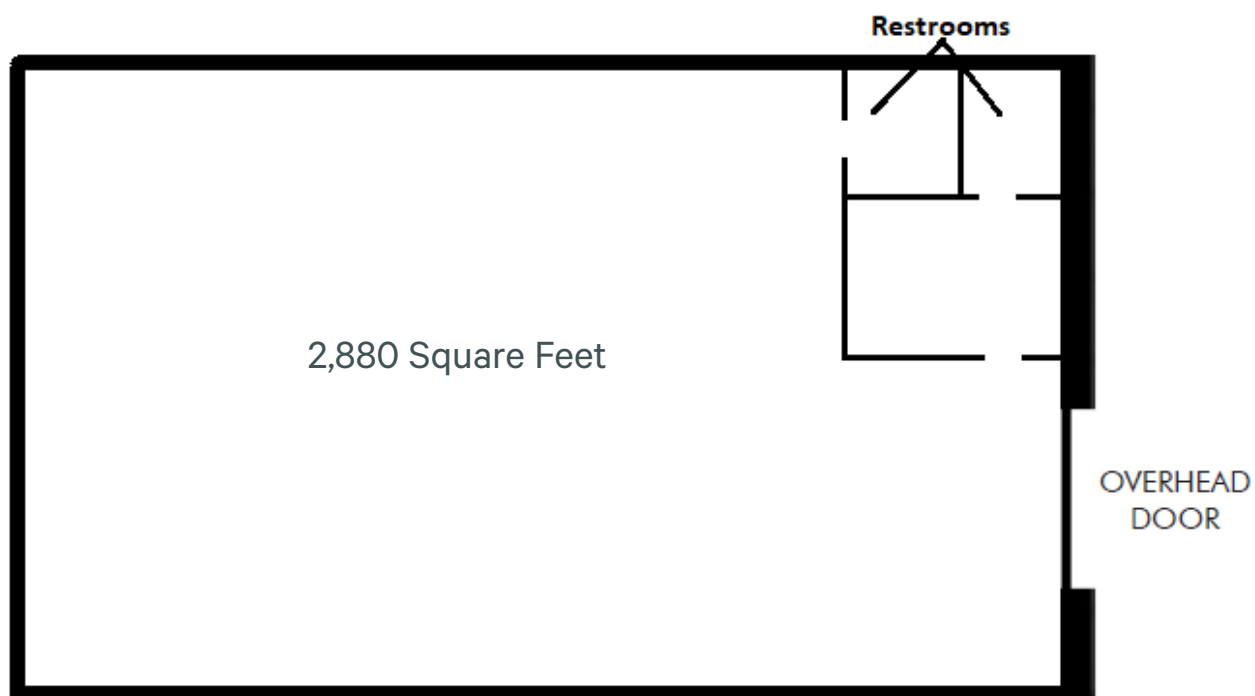
Interior Photos



35449 Groesbeck Hwy
Clinton Township, MI

For Lease

Floor Plan



Interior Photos

