

**UP TO  
12,334 SF  
FOR LEASE**

# 700 HIGHLANDER

Arlington, Texas 76015

**FLOOR PLANS**



## **CONTACT**

Vic Meyer | 817.710.1113 | [vmeyer@holtlunsford.com](mailto:vmeyer@holtlunsford.com)  
Kareem Amer | 817.632.6156 | [kamer@holtlunsford.com](mailto:kamer@holtlunsford.com)

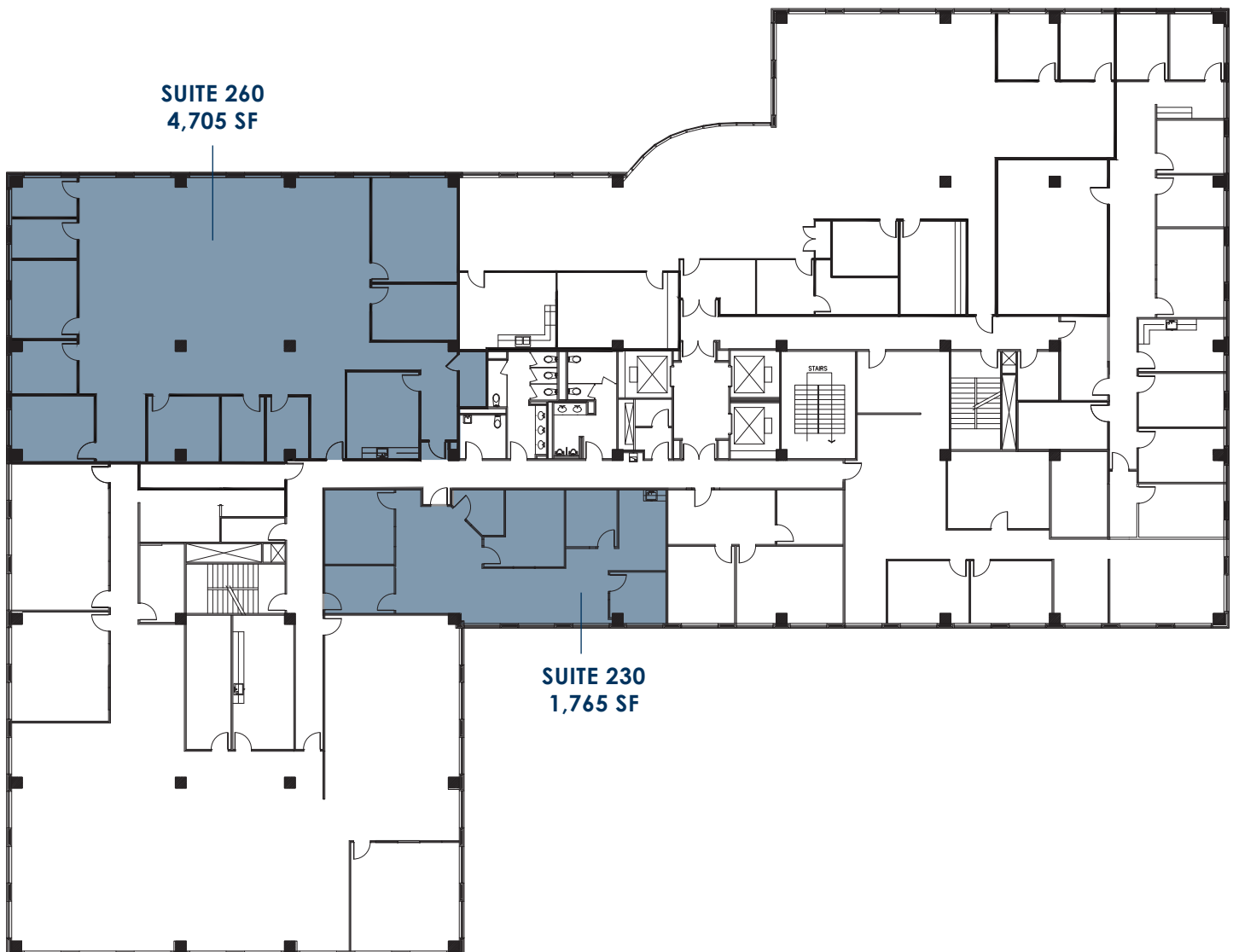
The information is provided by sources deemed reliable, however, Holt Lunsford Commercial makes no guarantees, warranties or representations as to the completeness or accuracy thereof.

**UP TO  
12,334 SF  
FOR LEASE**

# 700 HIGHLANDER

Arlington, Texas 76015

## FLOORPLAN FLOOR 2



### CONTACT

Vic Meyer | 817.710.1113 | [vmeyer@holtlunsford.com](mailto:vmeyer@holtlunsford.com)  
Kareem Amer | 817.632.6156 | [kamer@holtlunsford.com](mailto:kamer@holtlunsford.com)



The information is provided by sources deemed reliable, however, Holt Lunsford Commercial makes no guarantees, warranties or representations as to the completeness or accuracy thereof.

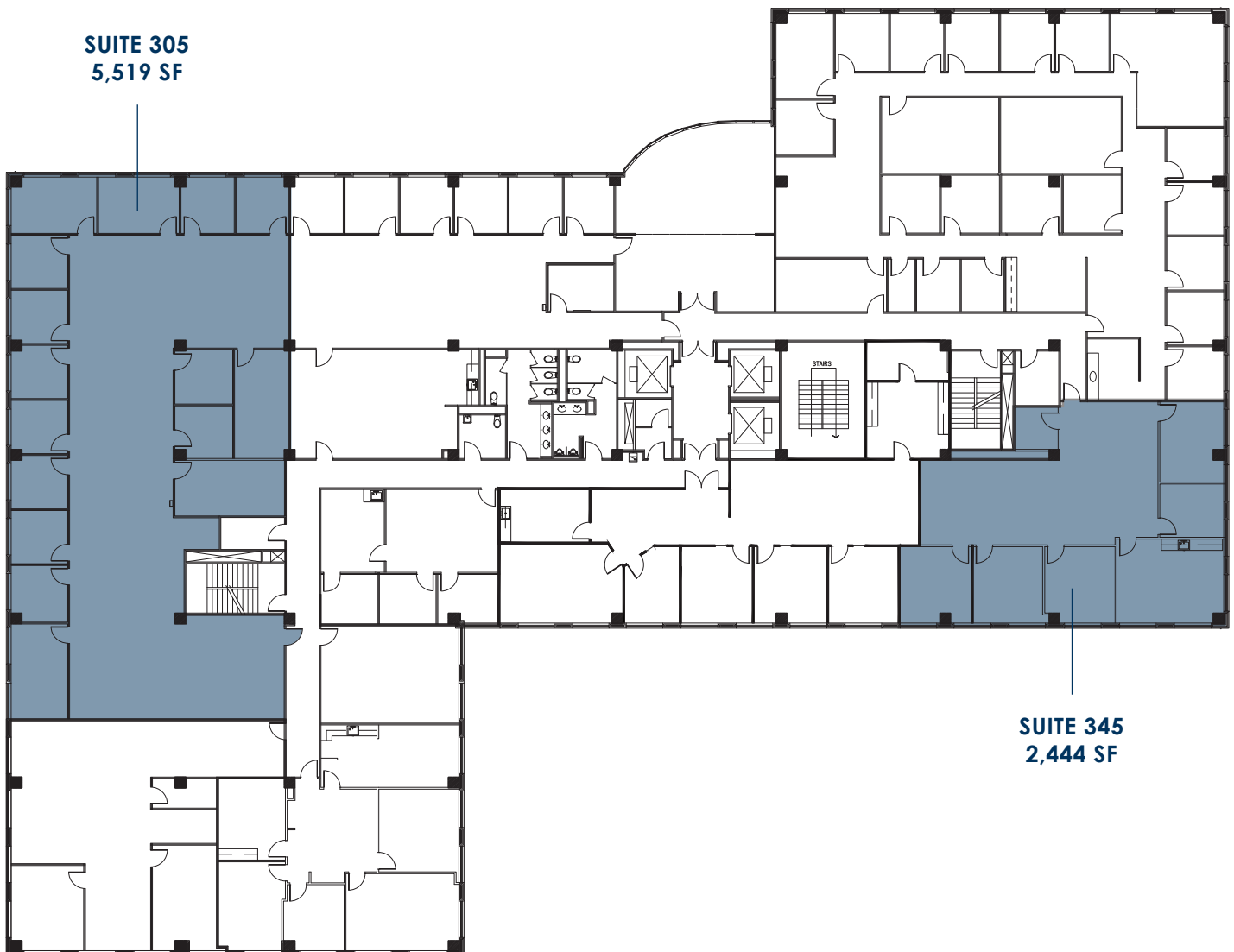


**UP TO  
12,334 SF  
FOR LEASE**

# 700 HIGHLANDER

Arlington, Texas 76015

## FLOORPLAN FLOOR 3



### CONTACT

Vic Meyer | 817.710.1113 | [vmeyer@holtlunsford.com](mailto:vmeyer@holtlunsford.com)  
Kareem Amer | 817.632.6156 | [kamer@holtlunsford.com](mailto:kamer@holtlunsford.com)



The information is provided by sources deemed reliable, however, Holt Lunsford Commercial makes no guarantees, warranties or representations as to the completeness or accuracy thereof.

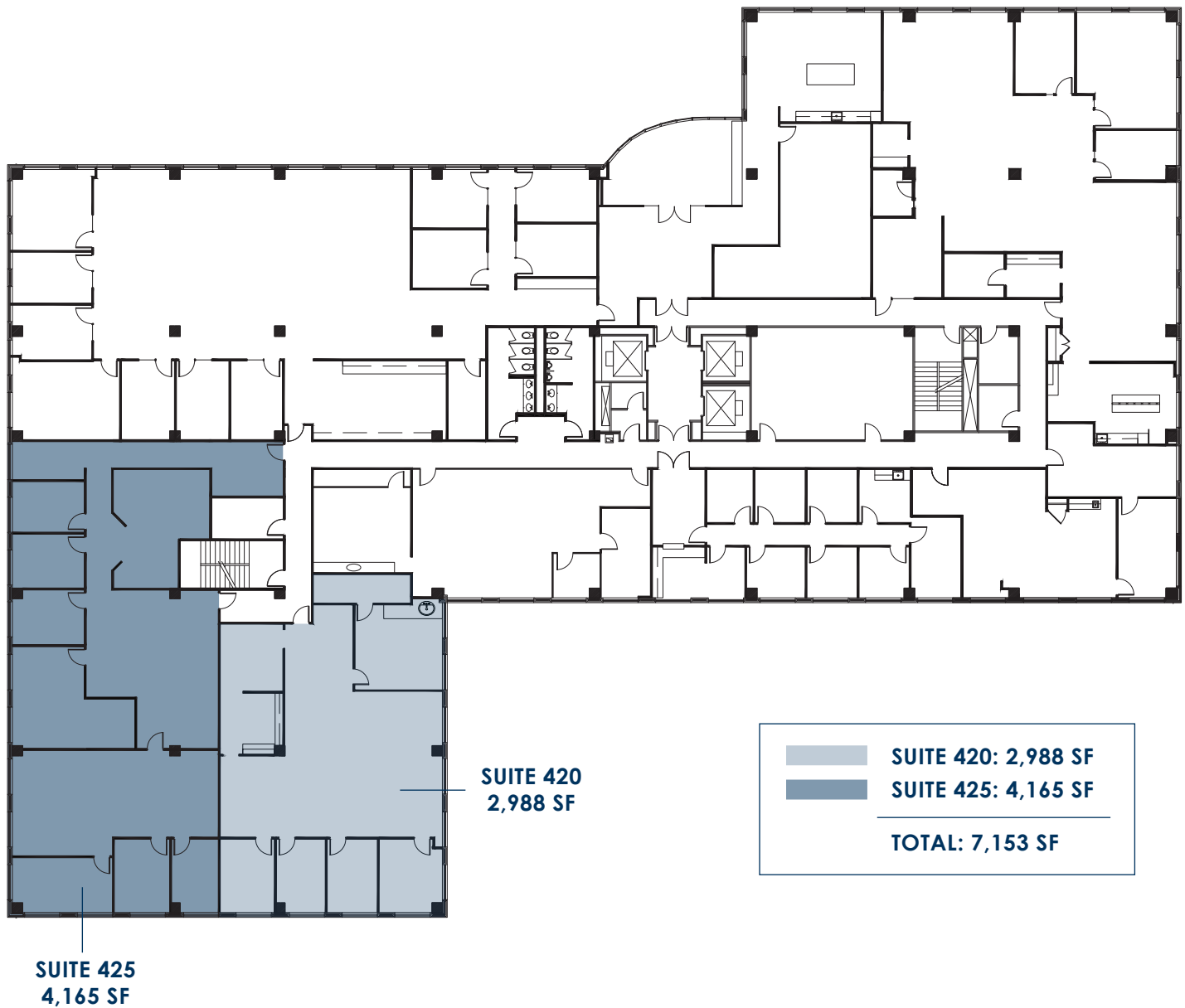
**UP TO  
12,334 SF  
FOR LEASE**

# 700 HIGHLANDER

Arlington, Texas 76015

## FLOORPLAN FLOOR 4

7,153 SF of contiguous space



### CONTACT

Vic Meyer | 817.710.1113 | [vmeyer@holtlunsford.com](mailto:vmeyer@holtlunsford.com)  
Kareem Amer | 817.632.6156 | [kamer@holtlunsford.com](mailto:kamer@holtlunsford.com)



The information is provided by sources deemed reliable, however, Holt Lunsford Commercial makes no guarantees, warranties or representations as to the completeness or accuracy thereof.

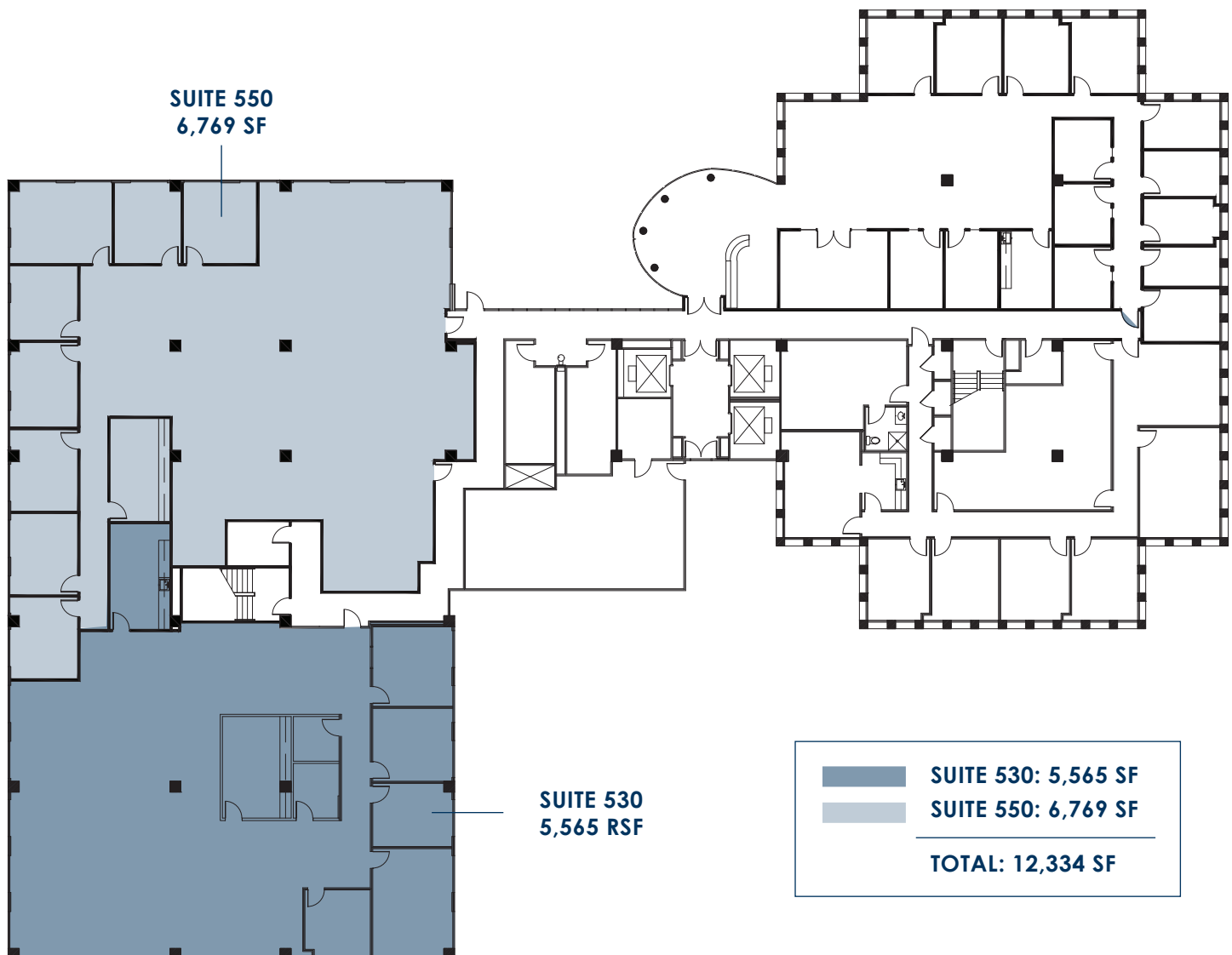
**UP TO  
12,334 SF  
FOR LEASE**

# 700 HIGHLANDER

Arlington, Texas 76015

## FLOORPLAN FLOOR 5

12,334 SF of contiguous space



### CONTACT

Vic Meyer | 817.710.1113 | [vmeyer@holtlunsford.com](mailto:vmeyer@holtlunsford.com)  
Kareem Amer | 817.632.6156 | [kamer@holtlunsford.com](mailto:kamer@holtlunsford.com)



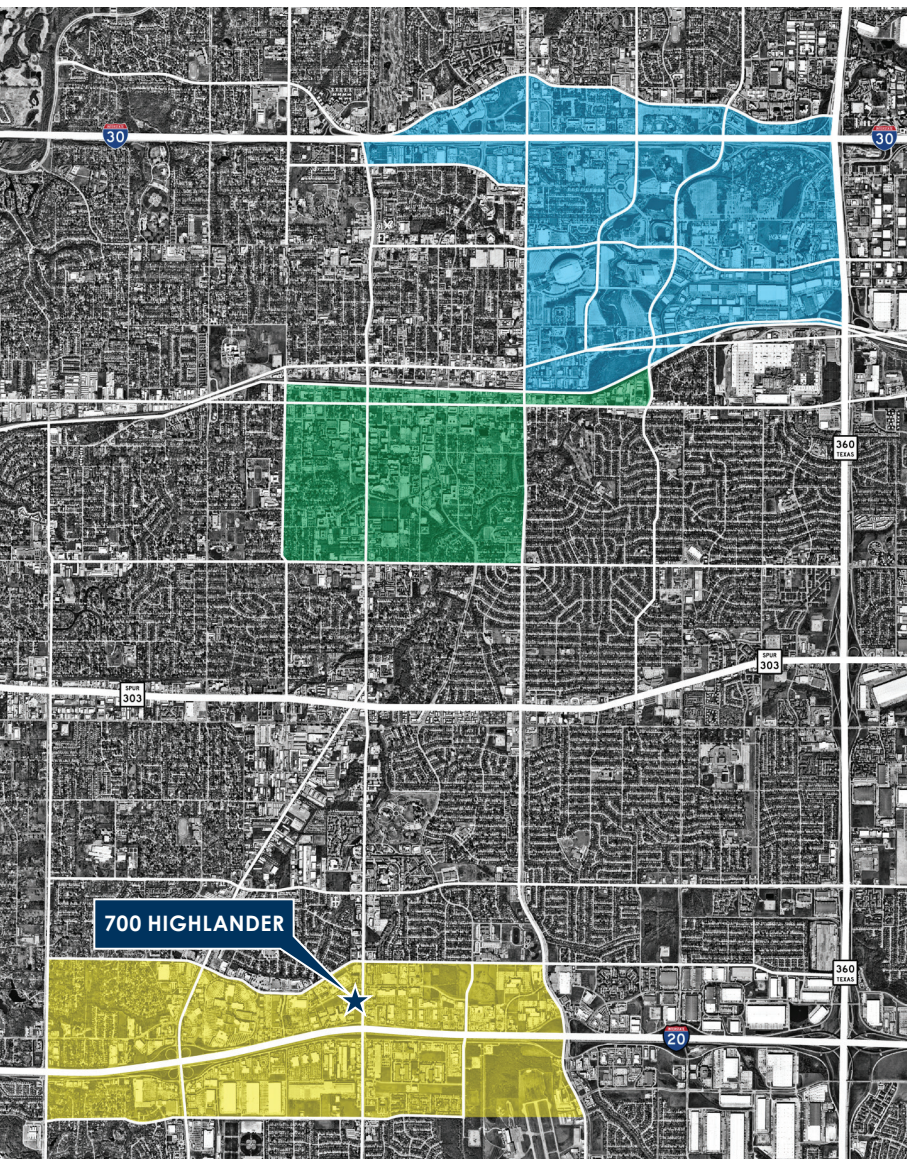
The information is provided by sources deemed reliable, however, Holt Lunsford Commercial makes no guarantees, warranties or representations as to the completeness or accuracy thereof.

UP TO  
12,334 SF  
FOR LEASE

# 700 HIGHLANDER

Arlington, Texas 76015

## AMENITY MAP



Arlington Highlands  
USMD Hospital  
Medical City Arlington  
GM Financial  
Arlington Municipal Airport  
Baylor Orthopedic and Spine Hospital  
Costco  
Courtyard by Marriot  
Residence Inn  
La Quinta Inn & Suites  
Overture Highlands 55+ Luxury Apartments  
The Parks Mall

University of Texas at Arlington  
Urban Union  
• Legal Draft Beer Company  
• Cane Rosso  
• Topsy Oak  
• Grease Monkey  
Arlington City Hall  
Levitt Pavilion

Texas LIVE  
Live by Lowes Hotel  
Globe Life Park  
Globe Life Field - Texas Rangers  
AT&T Stadium - Dallas Cowboys  
Esports Stadium  
Six-Flags over Texas  
Hurricane Harbor  
General Motors Assembly



## CONTACT

Vic Meyer | 817.710.1113 | [vmeyer@holtlunsford.com](mailto:vmeyer@holtlunsford.com)  
Kareem Amer | 817.632.6156 | [kamer@holtlunsford.com](mailto:kamer@holtlunsford.com)

The information is provided by sources deemed reliable, however, Holt Lunsford Commercial makes no guarantees, warranties or representations as to the completeness or accuracy thereof.



**UP TO  
12,334 SF  
FOR LEASE**

# 700 HIGHLANDER

Arlington, Texas 76015



## ARLINGTON HIGHLANDS

**Q-201** BJ's Restaurant & Brewhouse  
**E-101** Chicken Salad Chick  
**N-110** Dog Haus Biergarten  
**K-121** Freebirds World Burrito  
**A-117** India Grill  
**E-113** Kincaid's Hamburgers  
**B-101** McAlister's Deli  
**A-101** Which Wich Superior Sandwiches

**O-101** Bar Louie  
**N-150** Black-eyed Pea  
**X-415** Bone Daddy's  
**O-199** Chuy's  
**N-130** Pinkberry  
**N-140** Pluckers Wing Bar  
**Y-421** Red Robin Gourmet Burgers & Spirits  
**W-401** Walk-On's

**K-133** BoomerJack's Grill & Bar  
**E-149** Cold Stone Creamery  
**F-137** Gloria's  
**R-215** P.F. Chang's  
**E-145** Potbelly Sandwich Works  
**E-157** Starbucks Coffee  
**L-101** The Keg Steakhouse + Bar

**M-189** Genghis Grill  
**T-241** Lazy Dog  
**U-301** Mimi's – Bistro+Bakery  
**F-149** Piranha Killer Ramen  
**M-119** The Melting Pot Restaurant  
**M-141** Torchy's Tacos

## CONTACT

Vic Meyer | 817.710.1113 | [vmeyer@holtlunsford.com](mailto:vmeyer@holtlunsford.com)  
 Kareem Amer | 817.632.6156 | [kamer@holtlunsford.com](mailto:kamer@holtlunsford.com)



The information is provided by sources deemed reliable, however, Holt Lunsford Commercial makes no guarantees, warranties or representations as to the completeness or accuracy thereof.

