

NOTE:
PROVIDE 400 AMP
SERVICE TO EACH
UNIT

* NFPA NEC (2017) NATIONAL ELECTRICAL CODE

ELEVATORS REQUIRES 3 PHASE SERVICE

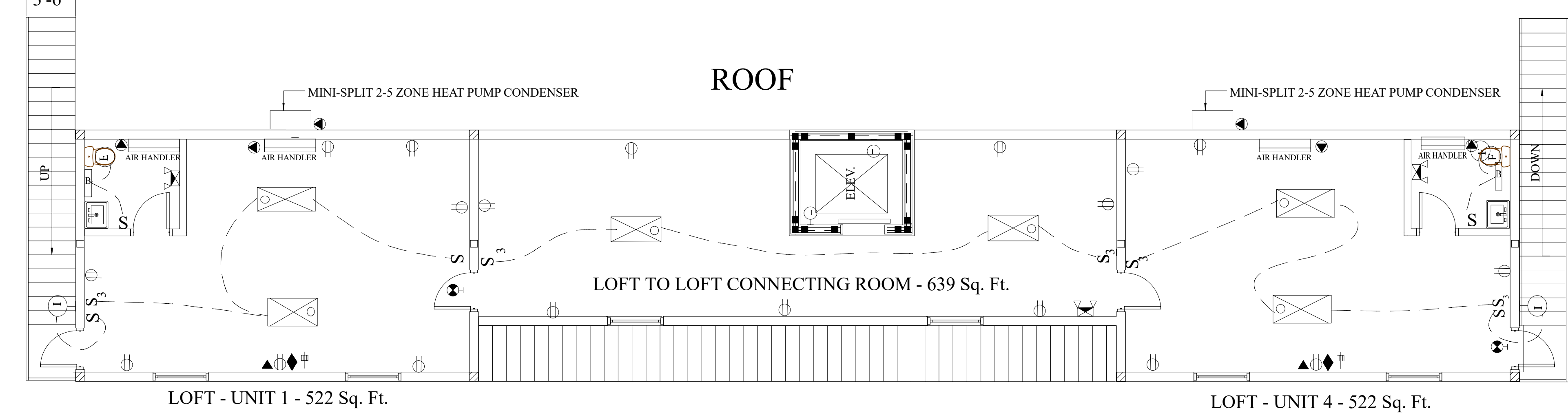
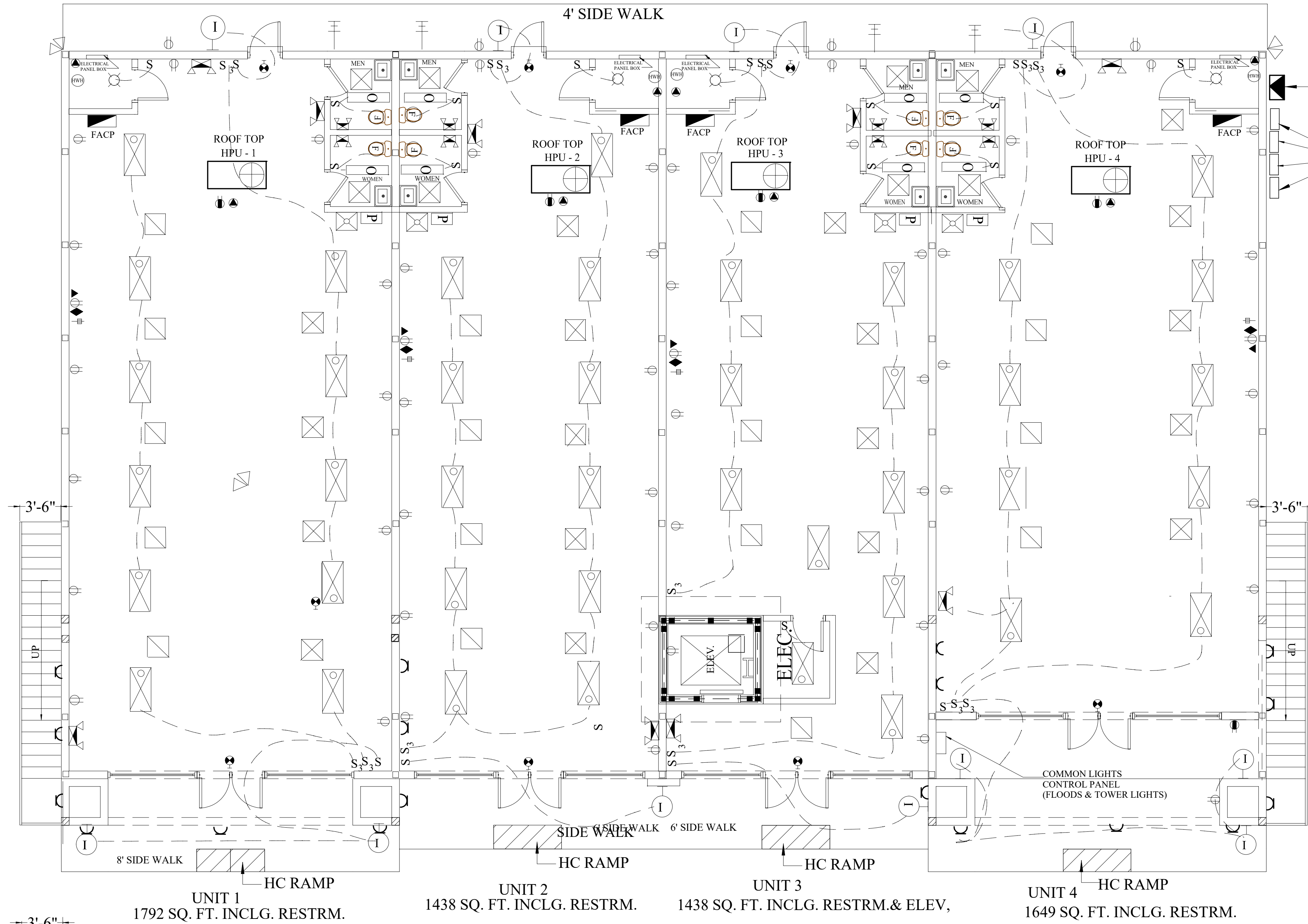


WeatherMaker® Single-Packaged Rooftop Units
with EcoBlue™ Technology 50FCQ
Heat Pump Units with Puron® (R-410A) Refrigerant
5 Nominal Tons each unit.

ELECTRICAL SYMBOLS LEGEND

- ⊕ TOWER LIGHTS - WALL MOUNTED
- ⊕ 2X2 FLUORESCENT LIGHT GRID TROFFER WITH ACRYLIC DIFFUSER
- ⊕ 4 FLUORESCENT WALL MOUNT LIGHT FIXTURE
- ⊕ 4 SURFACE MOUNTED FLUORESCENT CEILING MOUNT LIGHT FIXTURE
- ⊕ FLOOD LIGHTS
- ⊕ 6" ROUND WALL MOUNT COMPACT FLUORESCENT LIGHT FIXTURE
- ⊕ SINGLE-POLE TOGGLE SWITCH - 120/277 VOLT, 20A 48" AFF
- ⊕ THREE-WAY SWITCH - 120/277 VOLT 20A 48" AFF
- ⊕ DUPLEX RECEPTACLE - 120 VOLT, 20A 3 POLE GROUNDING TYPE 18" AFF
- ⊕ FLOOR DUPLEX RECEPTACLE - 120 VOLT, 20A 3 POLE GROUNDING TYPE 18" AFF
- ⊕ DUPLEX RECEPTACLE - 120 VOLT, 20A GROUND FAULT INTERRUPT
- ⊕ EXIT LIGHT FIXTURE - FLUORESCENT W/BATTERY BACK-UP CAST ALUMINUM HOUSING
- ⊕ 2X4 FLUORESCENT LIGHT GRID TROFFER WITH ACRYLIC DIFFUSER
- ⊕ EXTERIOR WALL MOUNT FLUORESCENT FIXTURE
- ⊕ HOT WATER HEATER - STORAGE TYPE
- ⊕ SPECIAL PURPOSE RECEPTACLE - TO MATCH EQUIPMENT TO BE SERVED
- ⊕ EMERGENCY LIGHTING FIXTURE /WO SWITCH
- ⊕ AIR DIFFUSER GRILL
- ⊕ AIR RETURN GRILL
- ⊕ EXHAUST FAN
- ⊕ DUCT MOUNTED SMOKE DETECTOR WIRED TO ALARM SYSTEM
- ⊕ REFRIGERATOR WATER CONNECTION
- ⊕ FIRE ALARM CONTROL PANEL (FACP)
- ⊕ FIRE ALARM SPEAKER/STROBE COMBINATION
- ⊕ FIRE ALARM STROBE ONLY
- ⊕ REFRIGERATOR WATER CONNECTION
- ⊕ RESESSED FIRE ALARM MANUAL PULL STTION 48" AFF TO CENTER
- ⊕ TELEVISION
- ⊕ TELEPHONE
- ⊕ NETWORK PORT
- NOTE: INSTALL 2 ELECTRICAL PANELS - 208/120 V, 3 PH, 4W, 225 W FRAME IN ROOM NO. 110.
- ⊕ OUTDOOR WATER FAUCET

Note: Both towers are to have wall mounted LED pack lighting to illuminate the top of the tower.



ELECTRIAL PLAN
SCALE 1/8" = 1'-0"

AREA	SQ. FT.
AIR CONDITION LOFTS & CONN. RM.	6317
PORCH/PATIO & ENTERANCE	380
TOTAL UNDER ROOF	8380

COMPANY NAME:

Lee R. Colson
Advanced Technology & Designs
(850) 491-3862 Cell
E-mail: colsonlee@aol.com

PROJECT NAME:

335 PAT THOMAS PARKWAY
QUINCY, FL
TANDT CONSTRUCTION ENTERPRISE

DATE

8/27/2024

PAGE #

E - 1

ELECTRICAL PLAN