



# 5145 Washington, Downers Grove, IL

Prime Downtown Downers Grove Location  
OFFICE FOR LEASE



**TOTAL AREA: 1,150 SF**

**SECOND FLOOR (1,150 SF)**

- 3 Private Offices
- Break Room
- Open Workspace
- Private Restroom
- Exclusive Outdoor Patio

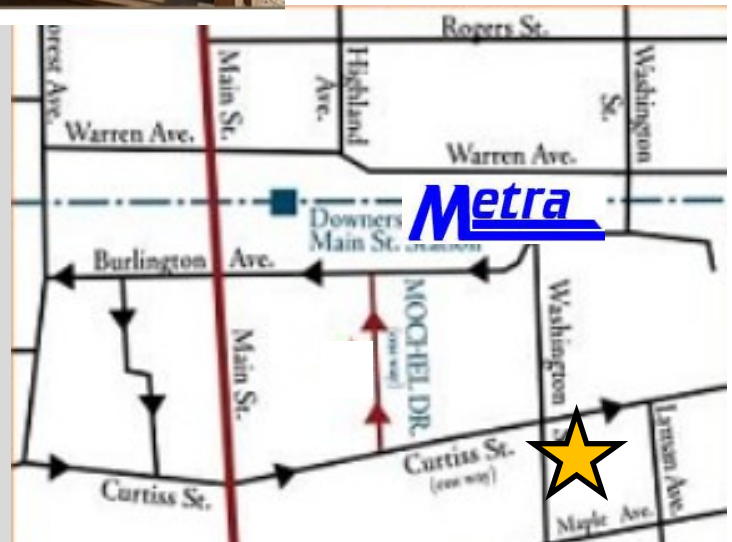
Join Prominent Dental Practice Coming Soon

- ◆ On Site Parking
- ◆ Walk To Metra
- ◆ Designated Signage
- ◆ Fully Built Out
- ◆ Potential Live-Work

## CONTACT

Theresa Schulz  
630.737.1200 Main  
630.453.1230 Mobile

Schulz Properties, Ltd.  
947 Maple Avenue, Downers Grove, IL





One Block To  
Metra Train  
Station



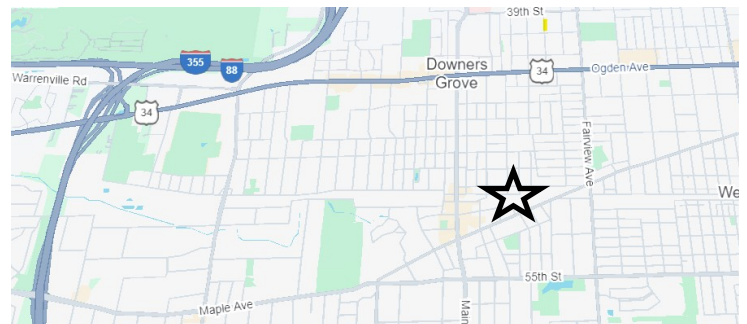
13 Total  
On Site Parking  
Spaces For  
Building

**Downers Grove**

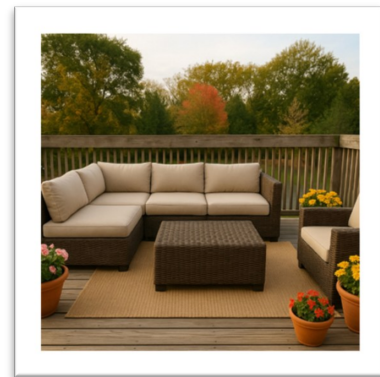
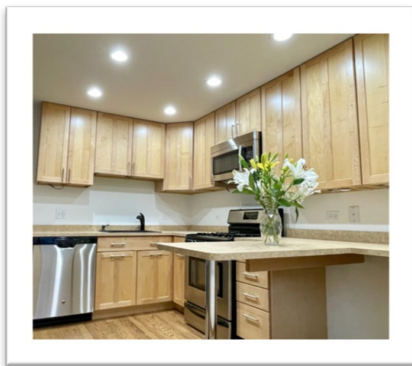
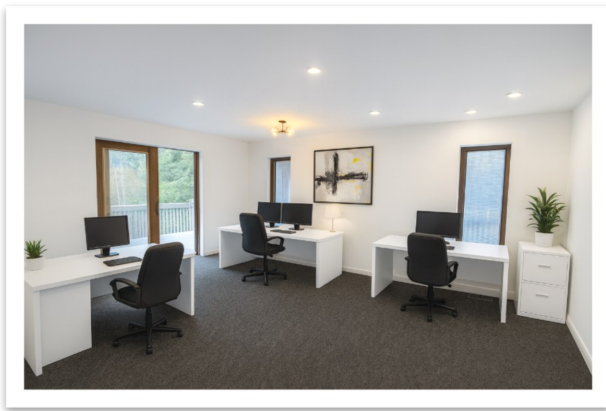
Approximately **29,000** residents

Express Metra train — **26 minutes to Chicago**

Easy access to **I-355 & I-88**



Population	1 Mile	3 Mile	5 Mile
2027 Projection	14,521	96,898	249,204
2022 Estimate	14,598	97,933	251,921



**Suite 200**  
**1,150 SF**

