

FOR SALE: MEDICAL OFFICE CONDOS

FOR SALE

3345 BURNS ROAD

SUITES 101-103

PALM BEACH GARDENS, FL 33410



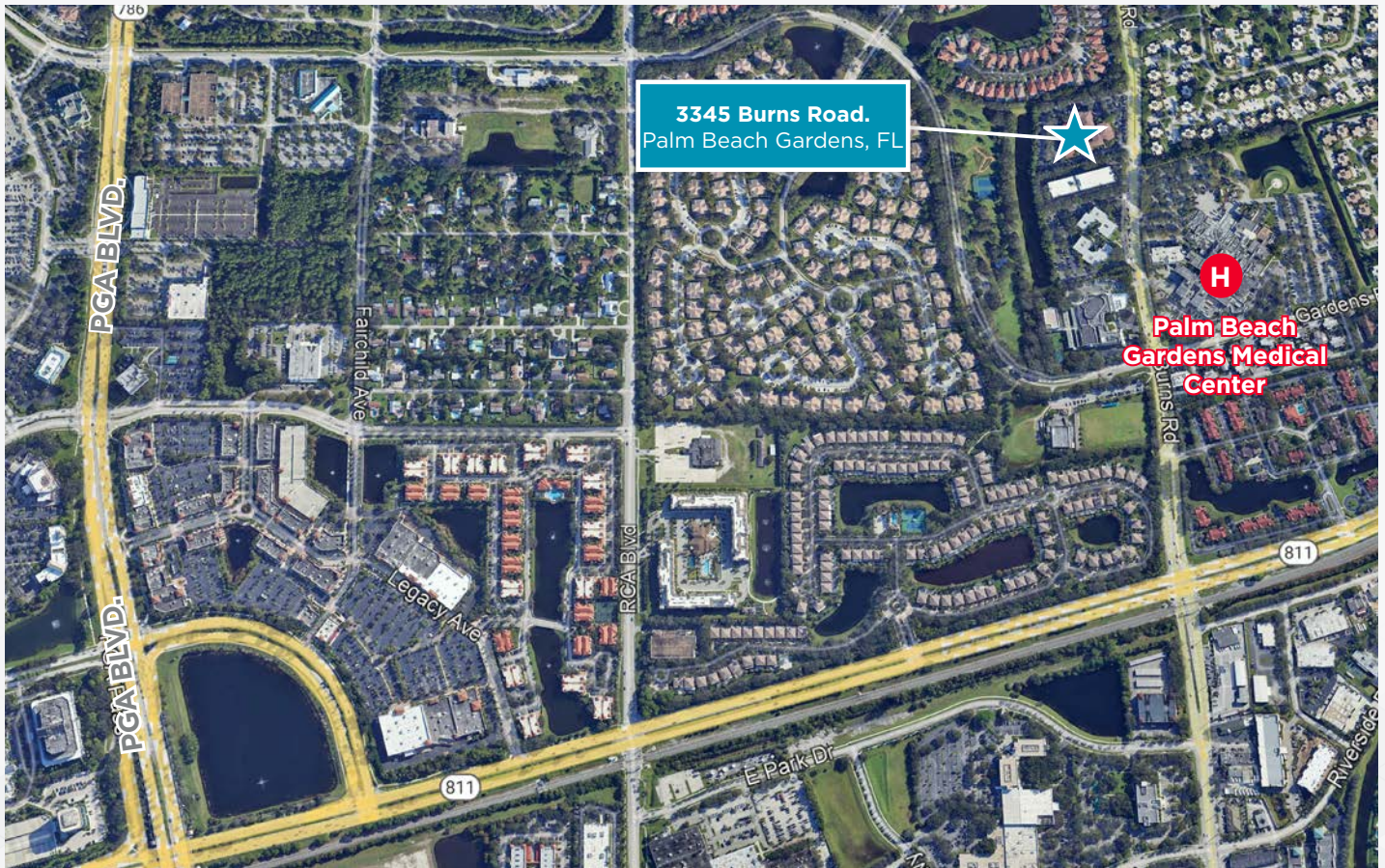
INTERIOR WALKWAY



CUSHMAN &
WAKEFIELD

PROPERTY HIGHLIGHTS

- For Sale Turn-Key Medical Office Condos
- Unit 103 : ± 1,201 SF | Price: \$630,525 2024 Taxes: \$5,742 Qtrly. Assessment: \$2,467
- Unit 101 -102: ± 3,000 SF |
- Price: ~~\$1,500,000~~ **Reduced to \$1,485,000**
- 2024 Taxes: \$14,015 Qtrly. Assessment: \$6,164
- Spaces may be combined up to 4,201 SF
- Fully built out, move-in ready spaces with upgraded finishes throughout
- First floor location with covered patient drop off directly in front of the units.
- Easy wheelchair access
- Hurricane shutters
- Located within walking distance to Palm Beach Gardens Medical Center



FOR MORE INFORMATION,

PLEASE CONTACT:

MICHAEL H. FELDMAN, CCIM

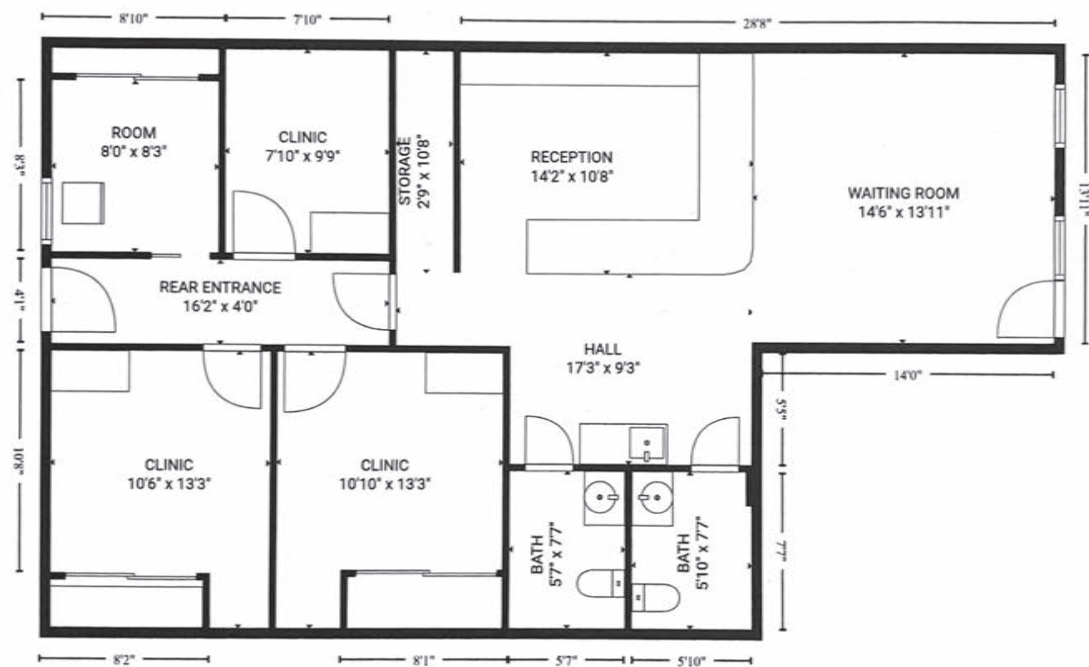
Senior Director
South Florida Healthcare Advisory Practice
Direct: +1 561 227 2063
Mobile: +1 561 207 0852
michael.feldman@cushwake.com

Office Address:

3801 PGA Blvd., Suite 104
Palm Beach Gardens
Florida 33410 | USA
cushmanwakefield.com

©2025 Cushman & Wakefield. All rights reserved. The information contained in this communication is strictly confidential. This information has been obtained from sources believed to be reliable but has not been verified. No warranty or representation, express or implied, is made as to the condition of the property (or properties) referenced herein or as to the accuracy or completeness of the information contained herein, and same is submitted subject to errors, omissions, change of price, rental or other conditions, withdrawal without notice, and to any special listing conditions imposed by the property owner(s). Any projections, opinions or estimates are subject to uncertainty and do not signify current or future property performance.

UNIT 103: ± 1,201 SF



UNIT 101: ± 3,000 SF

