



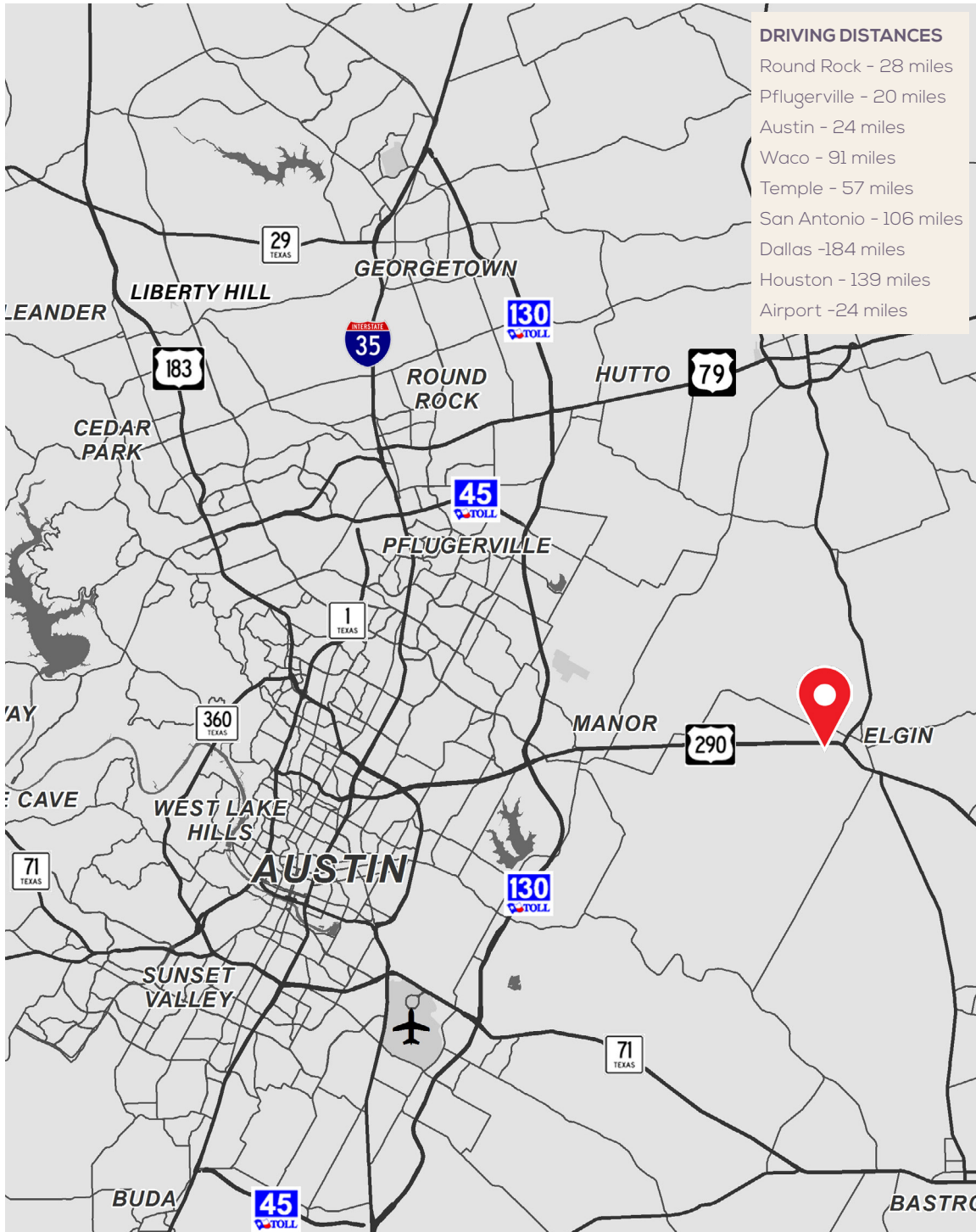
ELGIN, TEXAS

RIVER'S MARKETPLACE

60 ACRE DEVELOPMENT PROJECT

PADS • ANCHOR • JUNIOR BOX • SMALL SHOP RETAIL • HOTEL

HIGHWAY 290 , ELGIN , TEXAS



ABOUT

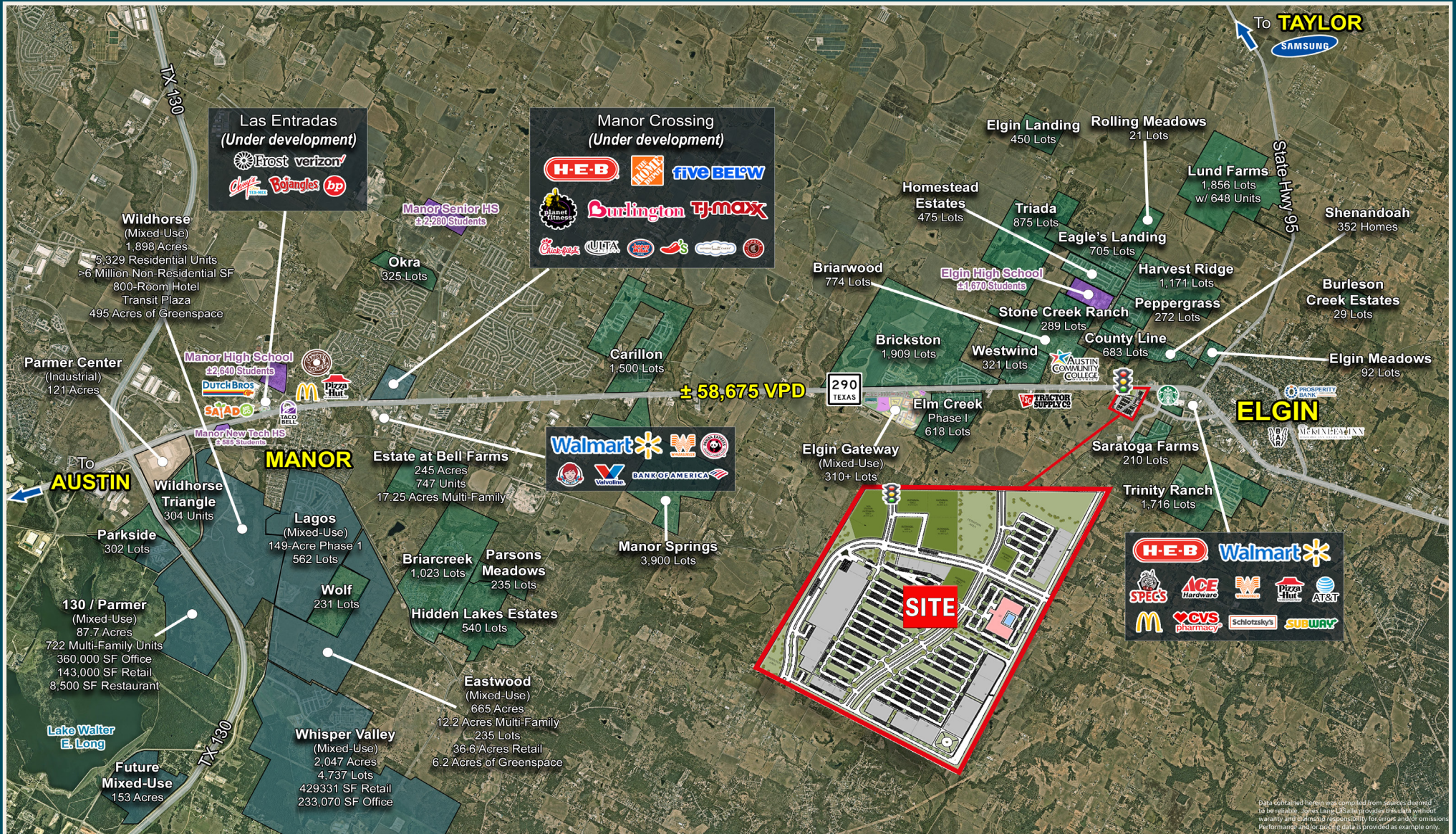
ELGIN, TX

Elgin, Texas is located in Bastrop County, approximately 30 minute drive to Downtown Austin. The city, founded in 1872, has grown from its origins as a railroad town into a charming community that blends rural charm with modern amenities. Elgin's downtown area features historic buildings and local businesses, reflecting its commitment to preserving its heritage while embracing growth. The city is also known for its excellent public schools, community events like the Western Days Festival, and its proximity to natural attractions such as Bastrop State Park. It is also only 30 minutes from the new Tesla plant & less than 20 minutes to the Samsung plant.

- Population has grown **33%** since 2020
- Population is forecast to grow **40%** by 2029
- **15,000** new homes being built
- **\$45M** in new commercial development planned

(source: [Elgin EDC](#))

ELGIN TRADE AREA



SITE LOCATION



S I T E P L A N



SITE PLAN



Elgin Business Park

Carr Lane
MANUFACTURING CO.

Southside Market Corporate Headquarters

RENDERINGS



RENDERINGS



LOCATION & DEMOS

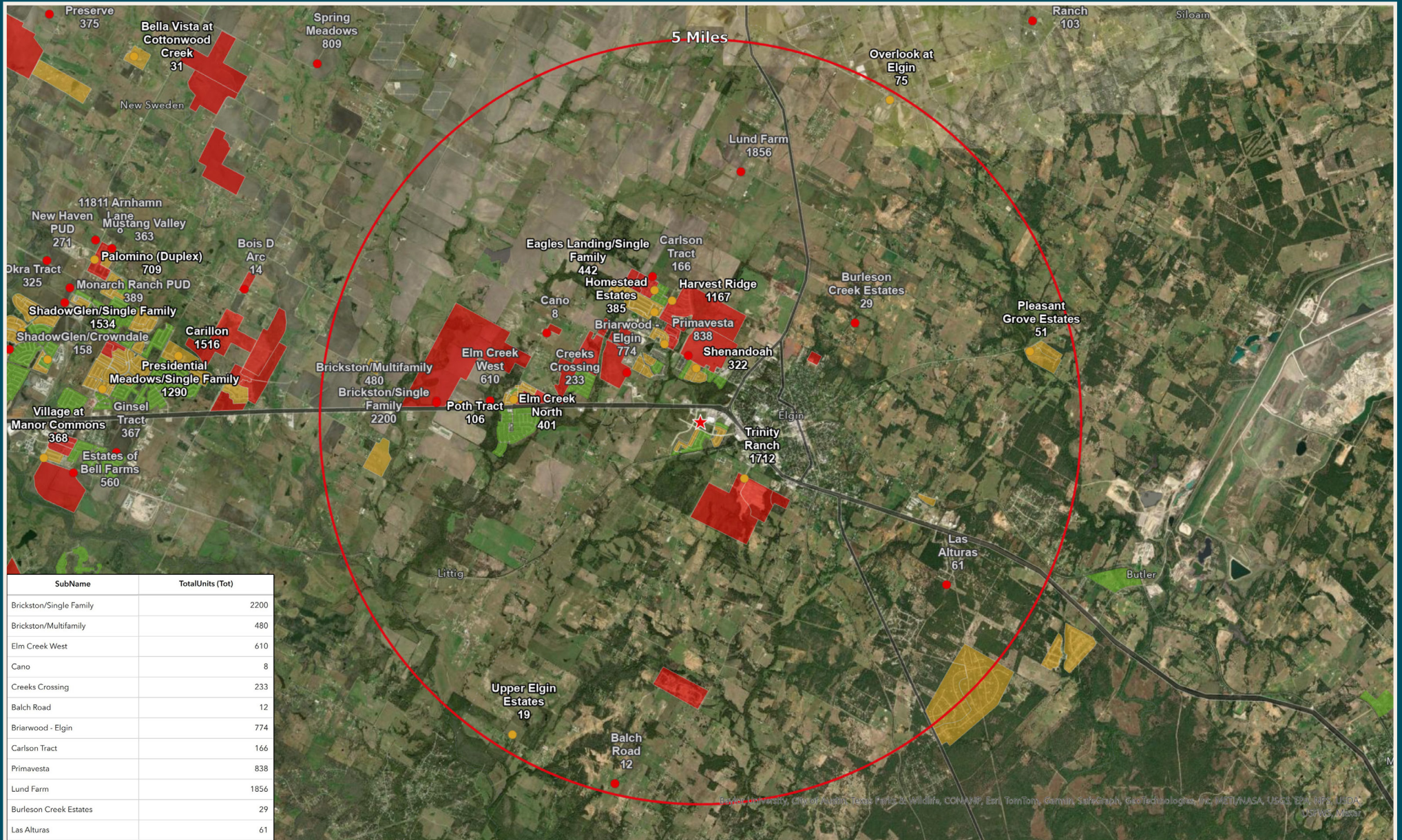
LOCATION, COMMUNITY, QUALITY LIVING. IT STARTS HERE!

- Along major arterial: Hwy 290
- Lighted intersection to access site
- Access and frontage along Highway 290
- Space available for retail, service, medical, and restaurant uses

<u>2024 DEMOS</u>	<u>3-MILE</u>	<u>5-MILE</u>	<u>10-MILE</u>
Total Population	16,861	22,109	72,936
Households	5,533	7,149	23,497
Daytime Population	12,516	15,712	48,557
Average HH Income	\$93,029	\$97,400	\$111,129

<u>TRAFFIC COUNTS</u>	<u>CPD</u>
Highway 290	33,733

HOUSING GROWTH STUDY





MATTHEW UNDERHILL

Senior Associate

+ 1 210 683 5513

Matthew.Underhill@jll.com

ANDREW CORNWELL

Vice President

+ 1 512 422 6363

Andrew.Cornwell@jll.com

[US.JLL.COM/RETAIL](https://us.jll.com/retail)

Although information has been obtained from sources deemed reliable, Owner, Jones Lang LaSalle, and/or their representatives, brokers or agents make no guarantees as to the accuracy of the information contained herein, and offer the Property without express or implied warranties of any kind. The Property may be withdrawn without notice. If the recipient of this information has signed a confidentiality agreement regarding this matter, this information is subject to the terms of that agreement.
©2024. JONES LANG LASALLE. ALL RIGHTS RESERVED.

FOR MORE INFORMATION, VISIT [US.JLL.COM/](https://us.jll.com/)