

For Sale or Lease

Available Immediately

800 Hollywood Avenue

Itasca, IL 60143

50,337 SF



**\$20,000 Bonus Broker Commission & 5 Months Net Free Rent to Tenant
for a 5-Year Lease Signed by January 31, 2025**



AL CARUANA

EXECUTIVE DIRECTOR
al.caruana@cushwake.com
(847) 720-1326

JEFF MATELLA

DIRECTOR
jeff.matella@cushwake.com
(847) 720-1349

MICHAEL LABEK

SENIOR ASSOCIATE
michael.labek@cushwake.com
(312) 470-2309

No warranty or representation, expressed or implied, is made as to the accuracy of the information contained herein, and same is submitted subject to error and omissions.

\$20,000 Bonus Broker Commission & 5 Months Net Free Rent to Tenant for a 5-Year Lease Signed by January 31, 2025

For Sale or Lease
Available Immediately

800 Hollywood Avenue

Itasca, IL 60143
50,337 SF



Available SF	50,337 SF
Office SF	+/- 6,000 SF (can be reduced)
Ceiling Height	21' 6"
Lighting	LED
Sprinkler	Wet System
Car Parking	79 cars
Year Built	1977
Power	2,000 Amps @ 480 Volts 400 Amps @ 240 Volts
Docks	4 interior
Drive-in Doors	1 (10' x 12')
Bay Sizes	30' x 40'
Operating Expenses	\$1.18 p.s.f.
R.E. Taxes	\$1.59 p.s.f.
Asking Lease Rate	Subject to Offer



HIGHLIGHTS

- Heavy power
- Immediate access to I-290 and I-390
- Flexible office configurations
- DuPage County real estate taxes



**\$20,000 Bonus Broker Commission & 5 Months Net Free Rent to Tenant
for a 5-Year Lease Signed by January 31, 2025**

For Sale or Lease
Available Immediately

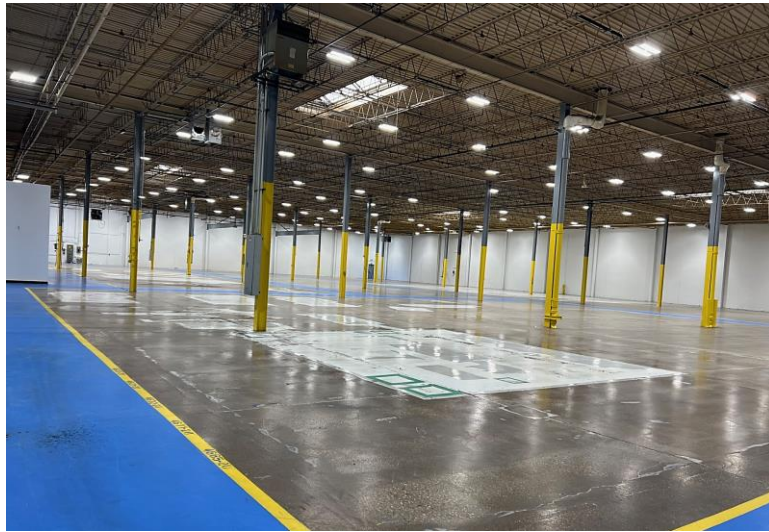
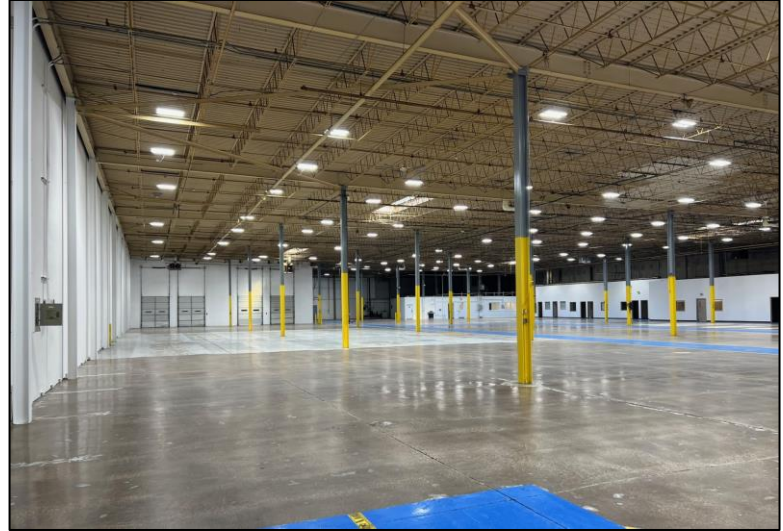
800 Hollywood Avenue

Itasca, IL 60143

50,337 SF



PROPERTY PHOTOS



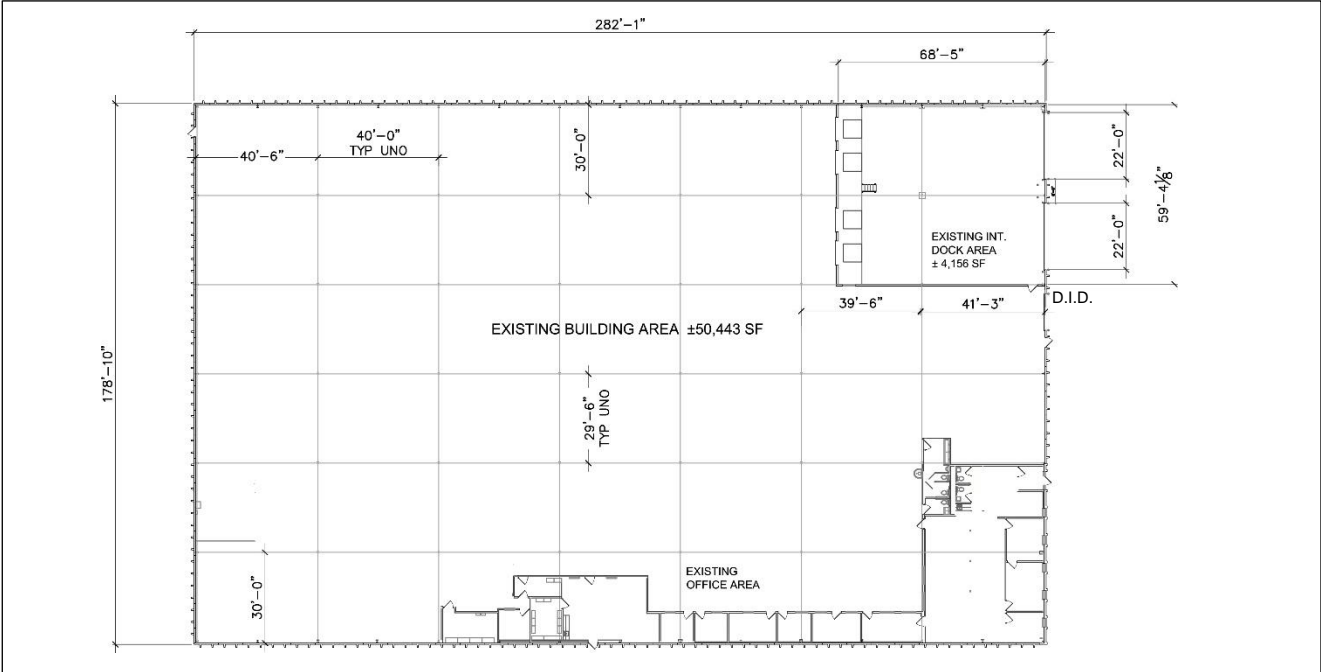
\$20,000 Bonus Broker Commission & 5 Months Net Free Rent to Tenant for a 5-Year Lease Signed by January 31, 2025

For Sale or Lease
Available Immediately

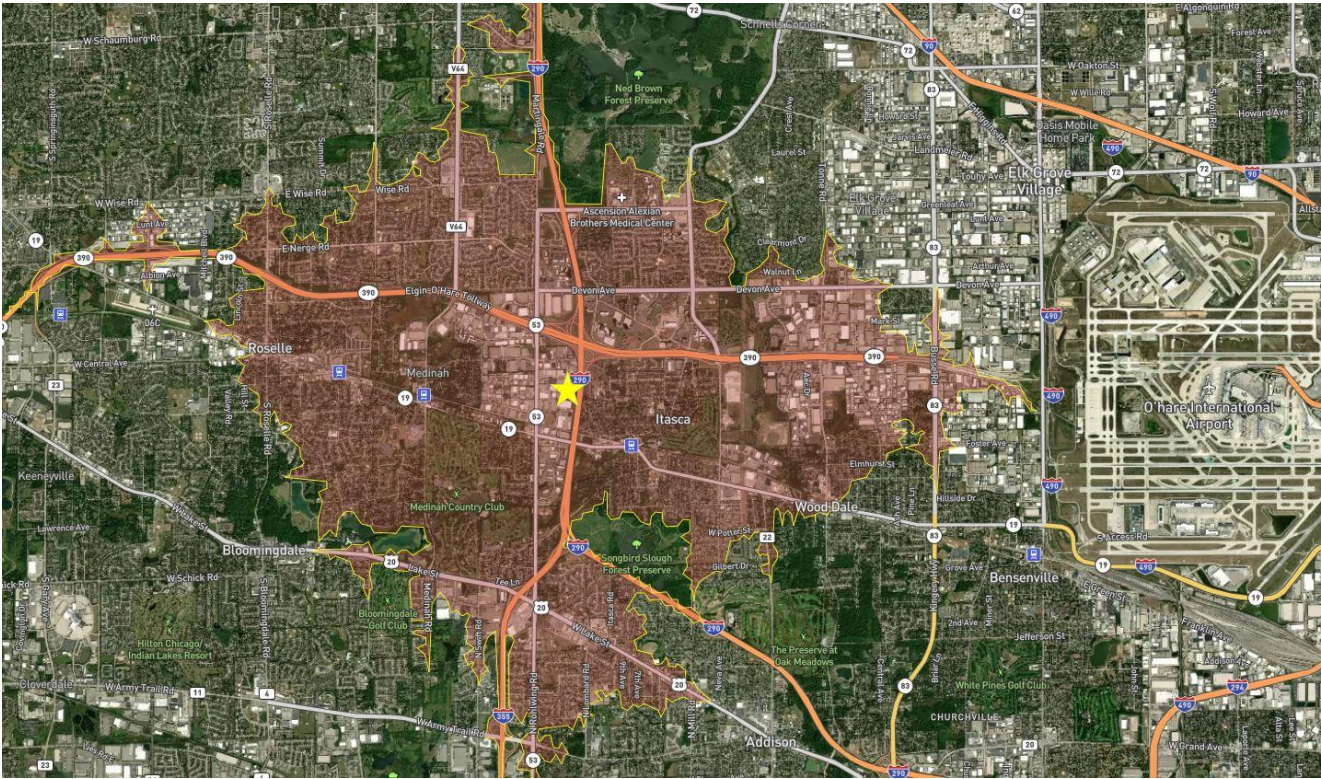
800 Hollywood Avenue
Itasca, IL 60143
50,337 SF



EXISTING BUILDING PLAN



10 MILE DRIVE-TIME RADIUS



No warranty or representation, expressed or implied, is made as to the accuracy of the information contained herein, and same is submitted subject to error and omissions.