

LAST SPACE AVAILABLE

INDUSTRIAL SPACE AVAILABLE FOR LEASE

FAIRMONT INDUSTRIAL

819 W Fairmont Dr | Tempe, AZ

Space Available:

Suite 2 13,940 SqFt

Space offered at: **\$0.96/sf/mo NNN**

For more information please contact:

Jeremy Johnson

Senior Property Manager

602.252.9300 | jj@casehuff.com

Professionally Managed & Leased by

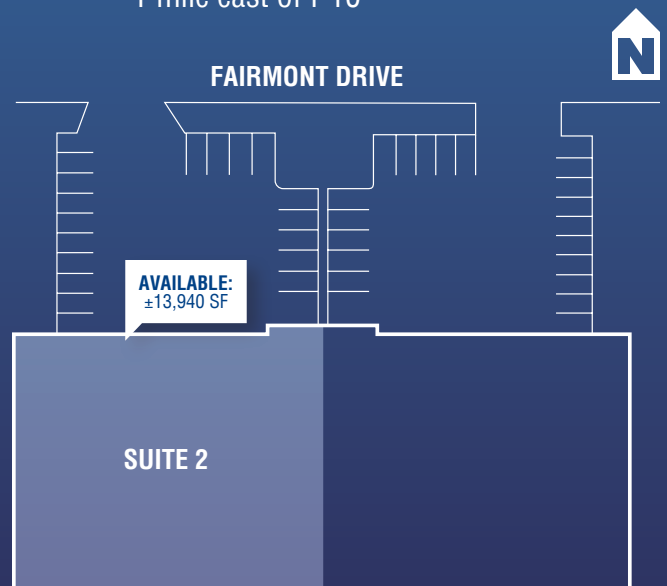


**CASE
HUFF**
& ASSOCIATES

www.casehuff.com



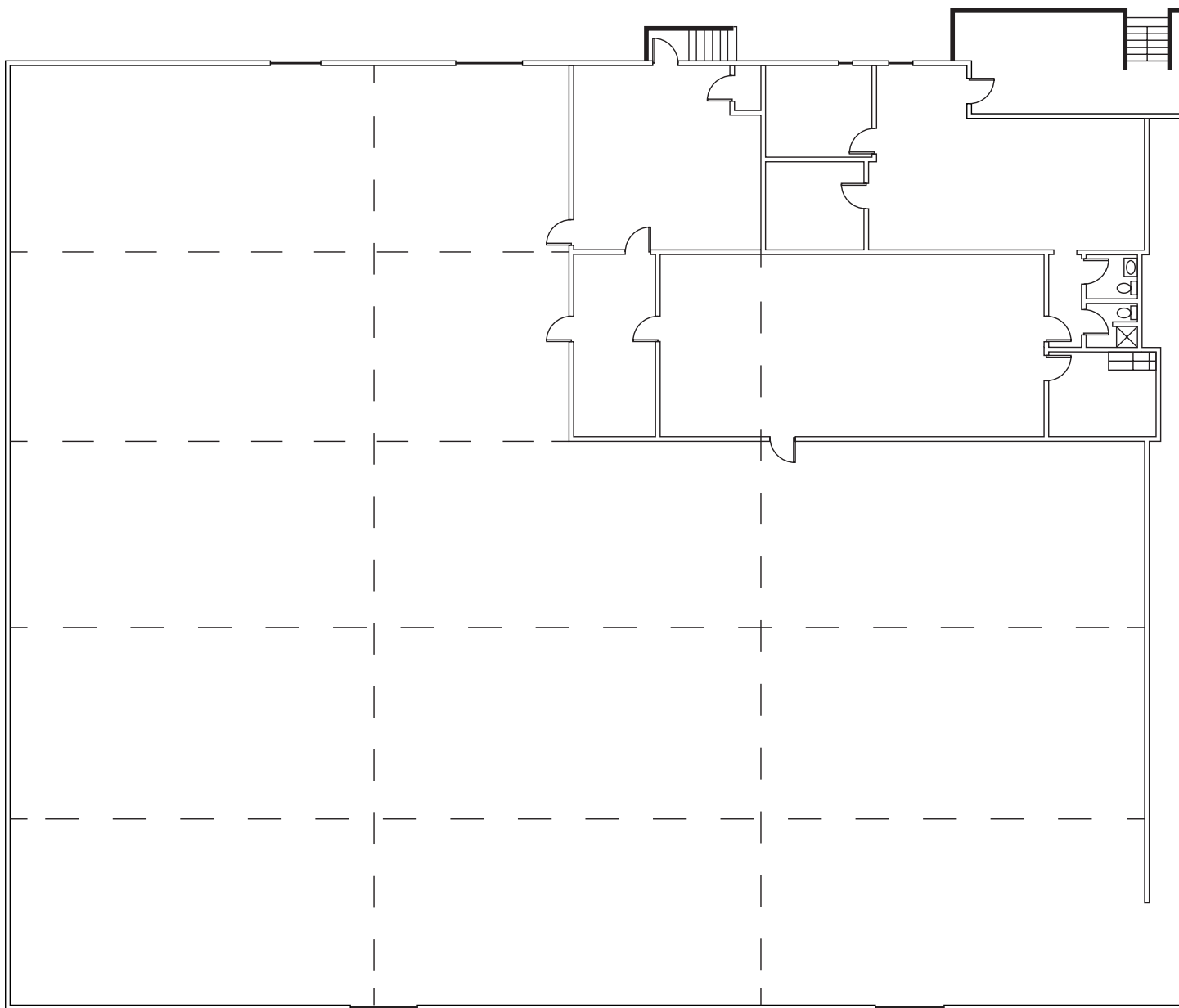
- 21' clear height
- +/- 2,500 sq ft office
- Two Dock-Level Doors
- 1/2 mile north of US-60
- 1 mile east of I-10



FAIRMONT INDUSTRIAL

FLOORPLANS

SUITE 2 13,940 SF



Space offered at: **\$0.96/sf/mo NNN**



www.casehuff.com

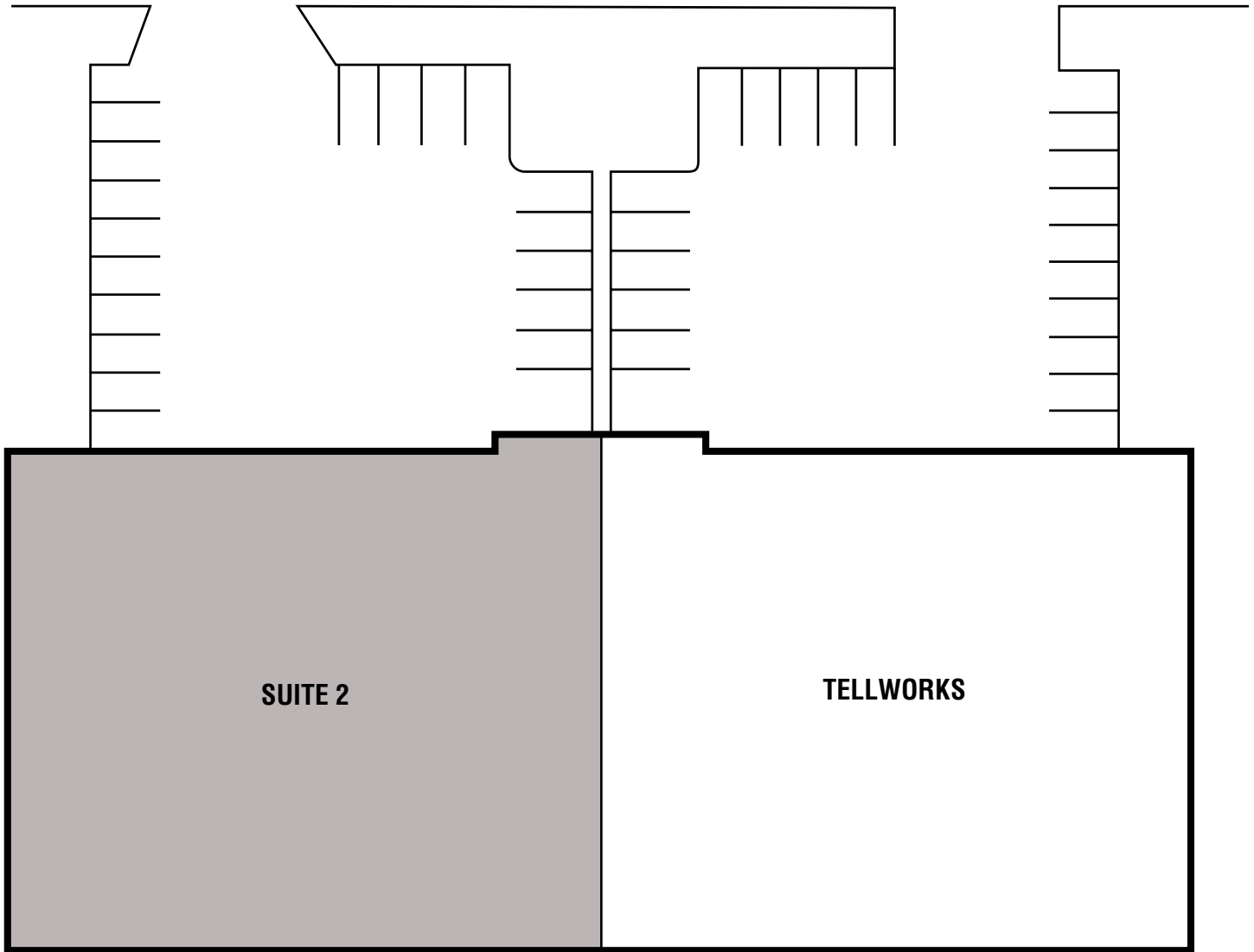
DISCLAIMER: No warranty or representation, express or implied, is made to the accuracy of the information contained herein and same is submitted subject to errors, omissions, change of price, rental or other conditions, withdrawal without notice and to any special listing conditions imposed by our principals.

FAIRMONT INDUSTRIAL

SUITE PLAN



FAIRMONT DRIVE



AVAILABLE SPACE



OCCUPIED SPACE

Space Available for Lease:

Suite 2 13,940 SqFt

Space offered at: **\$0.96/sf/mo NNN**

For more information please contact:

Jeremy Johnson

Senior Property Manager

602.252.9300 | jj@casehuff.com

Professionally Managed & Leased by



**CASE
HUFF**
& ASSOCIATES

www.casehuff.com

DISCLAIMER: No warranty or representation, express or implied, is made to the accuracy of the information contained herein and same is submitted subject to errors, omissions, change of price, rental or other conditions, withdrawal without notice and to any special listing conditions imposed by our principals.