

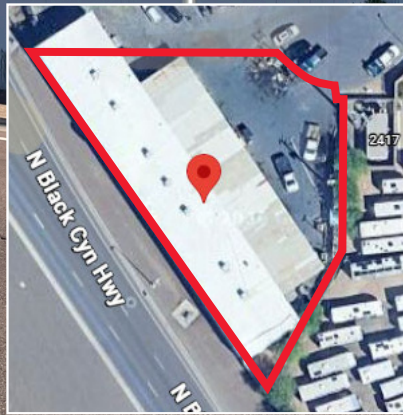
FOR SALE: ± 13,198 SF BUILDING

2425 W. LOUISE DR.

PHOENIX, AZ 85027 (DEER VALLEY)

PROPERTY AMENITIES:

- Deer Valley Airpark Location
- I-17 Frontage & Freeway Visibility
- Loop 101 (1 mile away)



FEATURES:

- Bldg. Size: ± 13,198 SF
 - 1,198 SF Office (3) Bathrooms
 - 12,000 SF Warehouse
 - 1,620 SF Awning
- Parcel#: 209-04-032
- Land: 22,433 SF
- Parking: 22 spaces
- Zoning: C-2
- Power: 400 Amps Warehouse
 - 200 Amps Office (120-240v)
- Clear Height: 14' - 16'
- Sales Price: \$4,100,000

No warranty or representation is made to the accuracy of the foregoing information. Terms of sale or lease and availability are subject to change or withdrawal without notice."

FOR MORE
INFORMATION
PLEASE
CONTACT:

Chris Keeley

President

480.363.9333 Mobile

chris.keeley@phxcb.com

Nete Keeley

Associate

520.360.5555 Mobile

nete.keeley@phxcb.com

22849 N. 19th Ave.

Phoenix, AZ 85027

623.516.7744 Office

www.PHXCB.com



FOR SALE: ± 13,198 SF BUILDING

2425 W. LOUISE DR.

PHOENIX, AZ 85027 (DEER VALLEY)

PROPERTY AMENITIES:

- Deer Valley Airpark Location
- I-17 Frontage & Freeway Visibility
- Loop 101 (1 mile away)



Phoenix Commercial Brokers | 22849 N. 19th Ave | Phoenix, AZ 85027 | www.PHXCBB.com

No warranty or representation is made to the accuracy of the foregoing information. Terms of sale or lease and availability are subject to change or withdrawal without notice."

Chris Keeley

President

480.363.9333 Mobile

chris.keeley@phxcb.com

Nete Keeley

Associate

520.360.5555 Mobile

nete.keeley@phxcb.com

PCB
PHOENIX COMMERCIAL
BROKERS

FOR SALE: ± 13,198 SF BUILDING

2425 W. LOUISE DR.

PHOENIX, AZ 85027 (DEER VALLEY)

PROPERTY AMENITIES:

- Deer Valley Airpark Location
- I-17 Frontage & Freeway Visibility
- Loop 101 (1 mile away)



Phoenix Commercial Brokers | 22849 N. 19th Ave | Phoenix, AZ 85027 | www.PHXCB.com

No warranty or representation is made to the accuracy of the foregoing information. Terms of sale or lease and availability are subject to change or withdrawal without notice."

Chris Keeley

President

480.363.9333 Mobile

chris.keeley@phxcb.com

Nete Keeley

Associate

520.360.5555 Mobile

nete.keeley@phxcb.com



FOR SALE: ± 13,198 SF BUILDING

2425 W. LOUISE DR.

PHOENIX, AZ 85027 (DEER VALLEY)

PROPERTY AMENITIES:

- Deer Valley Airpark Location
- I-17 Frontage & Freeway Visibility
- Loop 101 (1 mile away)



Phoenix Commercial Brokers | 22849 N. 19th Ave | Phoenix, AZ 85027 | www.PHXCB.com

No warranty or representation is made to the accuracy of the foregoing information. Terms of sale or lease and availability are subject to change or withdrawal without notice."

Chris Keeley

President

480.363.9333 Mobile

chris.keeley@phxcb.com

Nete Keeley

Associate

520.360.5555 Mobile

nete.keeley@phxcb.com

