

VERADA

# 65 Eckford Street

Greenpoint

Prime Retail  
Opportunity



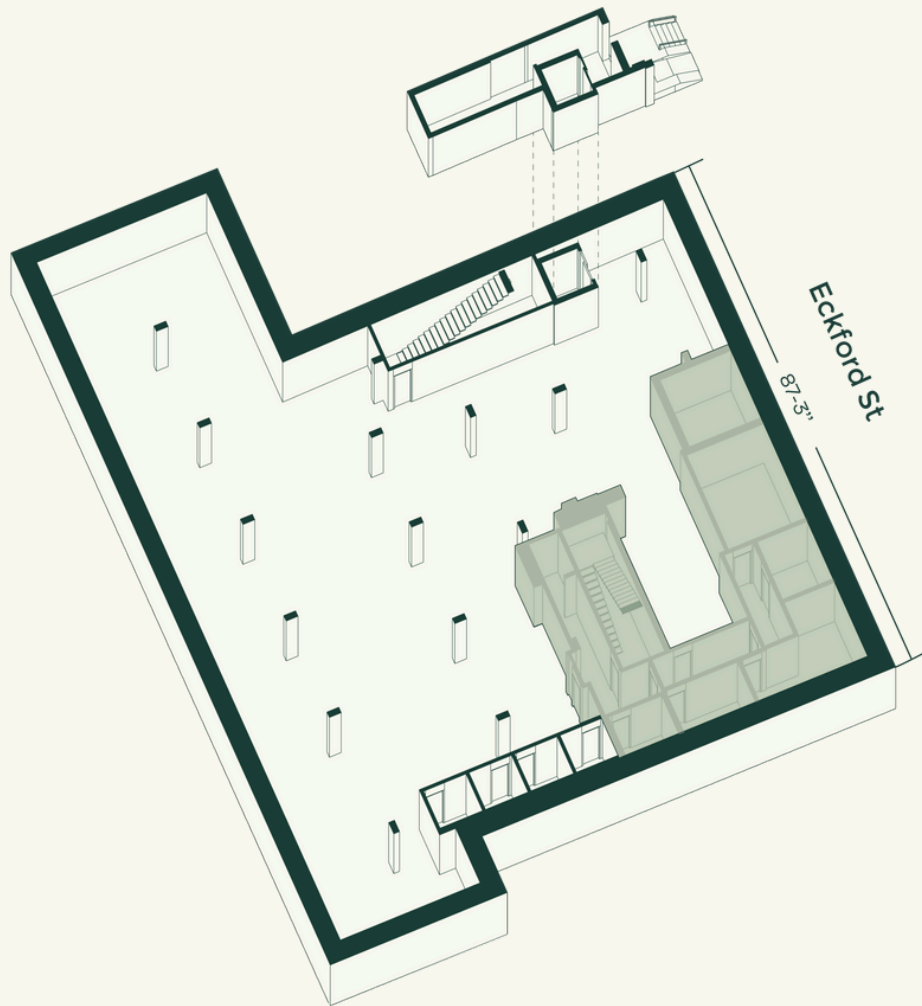
The retail space at 65 Eckford Street in Greenpoint, Brooklyn, offers a prime opportunity for businesses seeking a well-connected location. Situated between Driggs Avenue and Engert Avenue, this 6,474-square-foot lower-level space is accessible via an elevator/ staircase, ensuring convenience for customers and staff. Positioned just four blocks from the Nassau Avenue G train station, the property benefits from strong foot traffic and seamless connectivity to the surrounding Greenpoint and Williamsburg markets. This versatile space is ideal for a variety of retail concepts looking to establish a presence in a vibrant and growing neighborhood.

[View Listing >](#)





[View Listing >](#)



**Square Footage**

6,474 SF

**Space Location**

Lower Level

**Accessibility**

Elevator and staircase access to the lower level

**Divisible**

No

**Ceiling Height**

12 FT

**Features**

Space includes 4 bathrooms

**Transit**

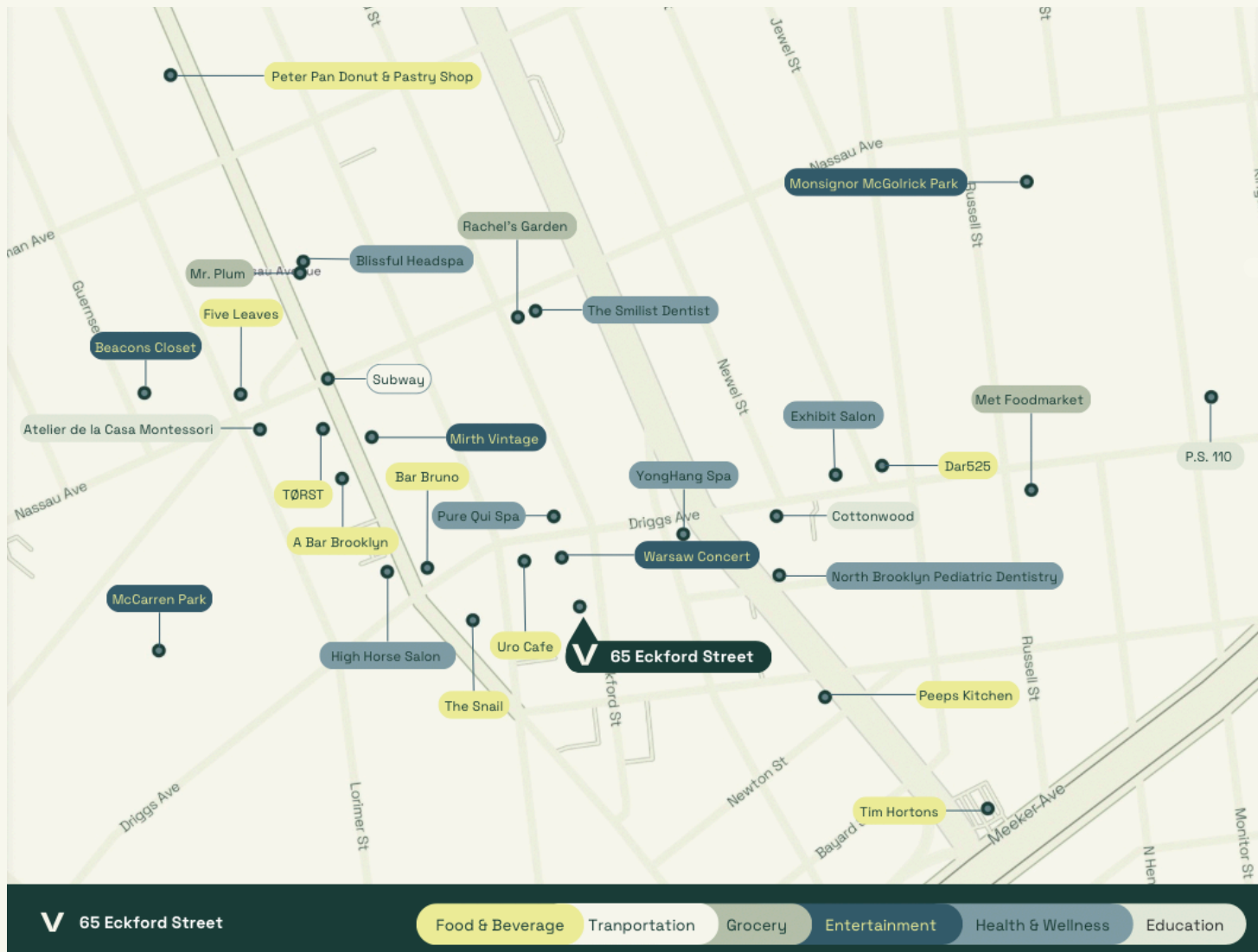
Four blocks from the Nassau Avenue G train station

**Market Concessions**

Ownership open to build out

[View Listing >](#)





### Neighborhood Description:

- Situated between Driggs Avenue and Engert Avenue
- Excellent co-tenancy: Uro Cafe, Warsaw Concert, North Brooklyn Pediatric Dentistry, TØRST, and Exhibit Salon
- Subway: Four blocks from the Nassau Avenue G train station

[View Listing >](#)

Nate Mallon  
[nm@veradaretail.com](mailto:nm@veradaretail.com)  
 860-416-7288

David Dubinsky  
[david@veradaretail.com](mailto:david@veradaretail.com)  
 718-308-7111

Brendan Thrapp  
[bt@veradaretail.com](mailto:bt@veradaretail.com)  
 201-787-9679

**VERADA**  
[veradaretail.com](http://veradaretail.com)