

MADISON MEDICAL PLAZA 4601 MADISON AVE • KANSAS CITY, MO

AREA
REAL ESTATE ADVISORS



PROPERTY HIGHLIGHTS:

22,380 RSF CONTIGUOUS AVAILABLE:

2ND FLOOR: 4,552 SF WITH PRIVATE ACCESS TO
SURFACE PARKING LOT

3RD FLOOR: UP TO 8,914 SF (CAN BE DEMISED)

4TH FLOOR: UP TO 8,914 SF (CAN BE DEMISED)

LEASE RATE: \$28.50/RSF NET OF UTILITIES

DAVITA DIALYSIS TO OCCUPY ENTIRE 1ST FLOOR AND
HALF OF 2ND FLOOR

AGGRESSIVE TENANT FINISH PACKAGES

NEW LANDSCAPING, MECHANICAL SYSTEM, PARKING
LOT OVERLAY, AND FACADE RENOVATION

COVERED AND SURFACE PARKING AVAILABLE

SIGNAGE AVAILABLE (10,924 CPD ON MADISON AVE)

MORE INFORMATION:

PATRICK KOHNLE

D 816.895.4805

E PKOHNLE@OPENAREA.COM

SEAN CRAVEN

D 816.777.2838

E SCRAVEN@OPENAREA.COM

TIM SCHAFFER

D 816.876.2535

E TSCHAFFER@OPENAREA.COM

AREA REAL ESTATE ADVISORS

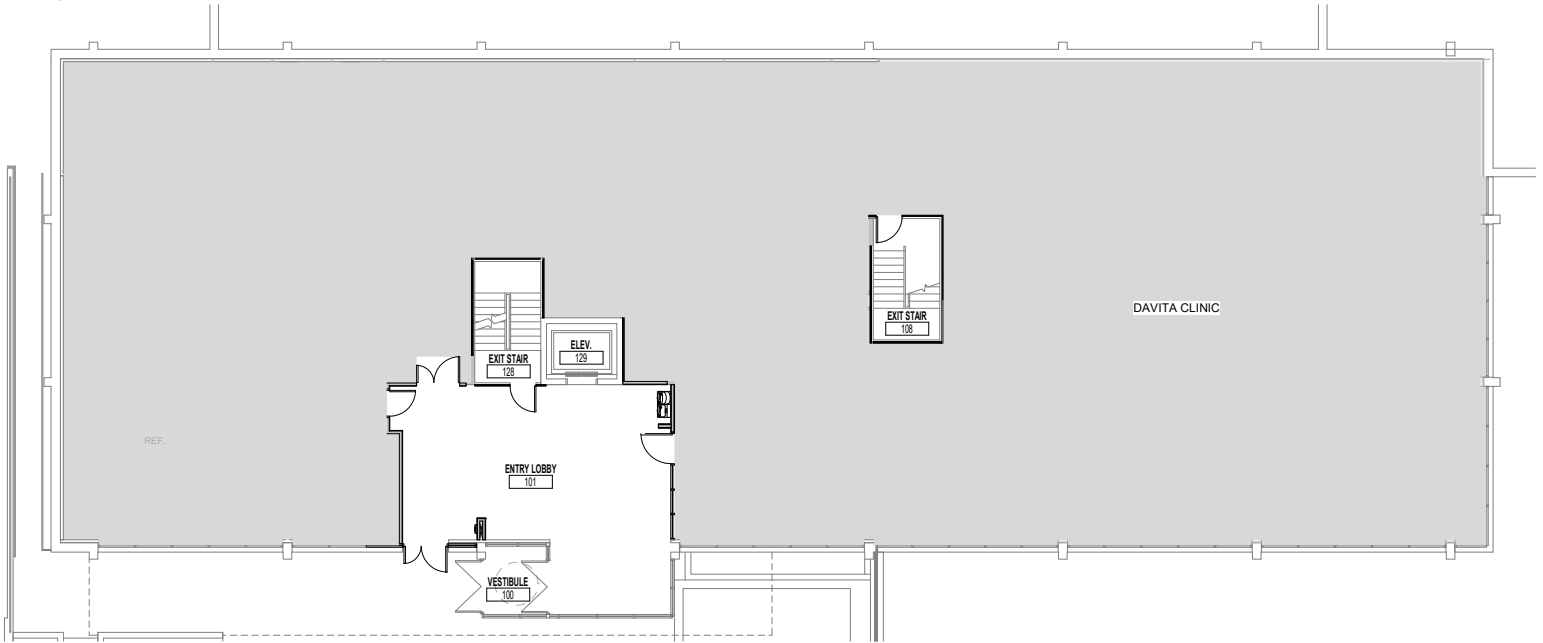
A 4800 MAIN ST, SUITE 400 • KANSAS CITY, MO 64112

P 816.895.4800 **W** OPENAREA.COM

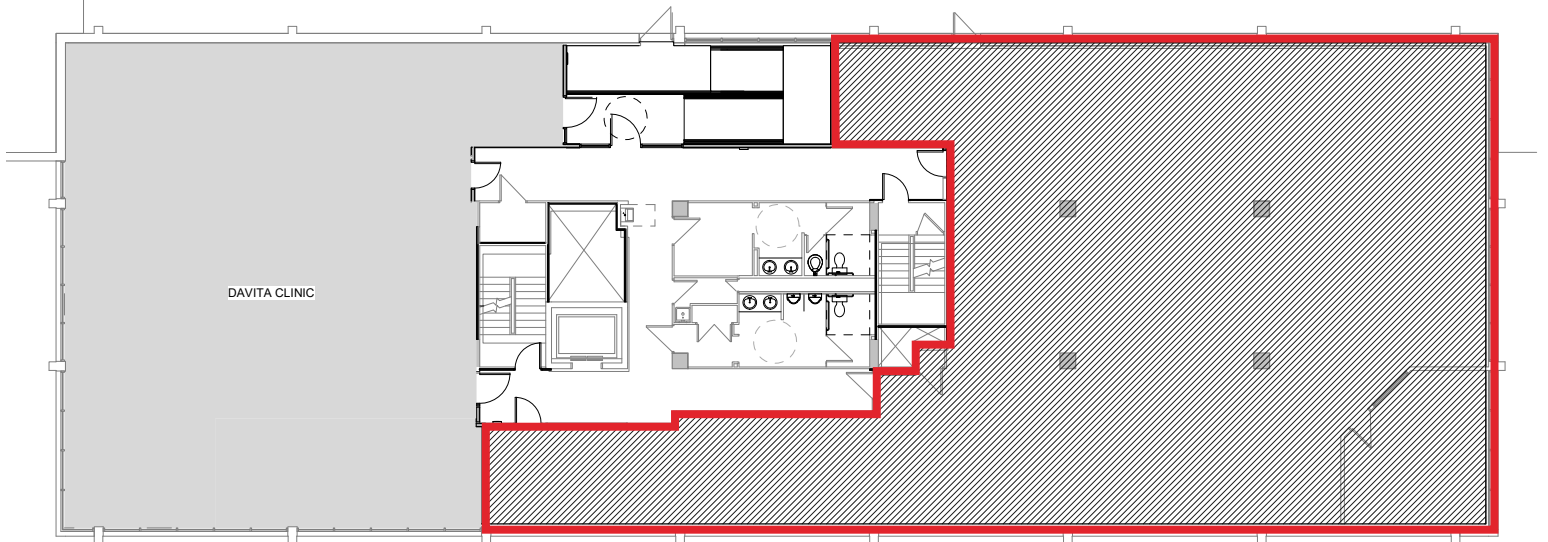
The information used to create this brochure was gathered from sources deemed reliable. Though we do not doubt its accuracy, we do not guarantee or warranty it. You and your advisors should conduct a careful independent investigation of the information to determine your satisfaction and suitability.

FLOOR PLANS:

LEVEL 1

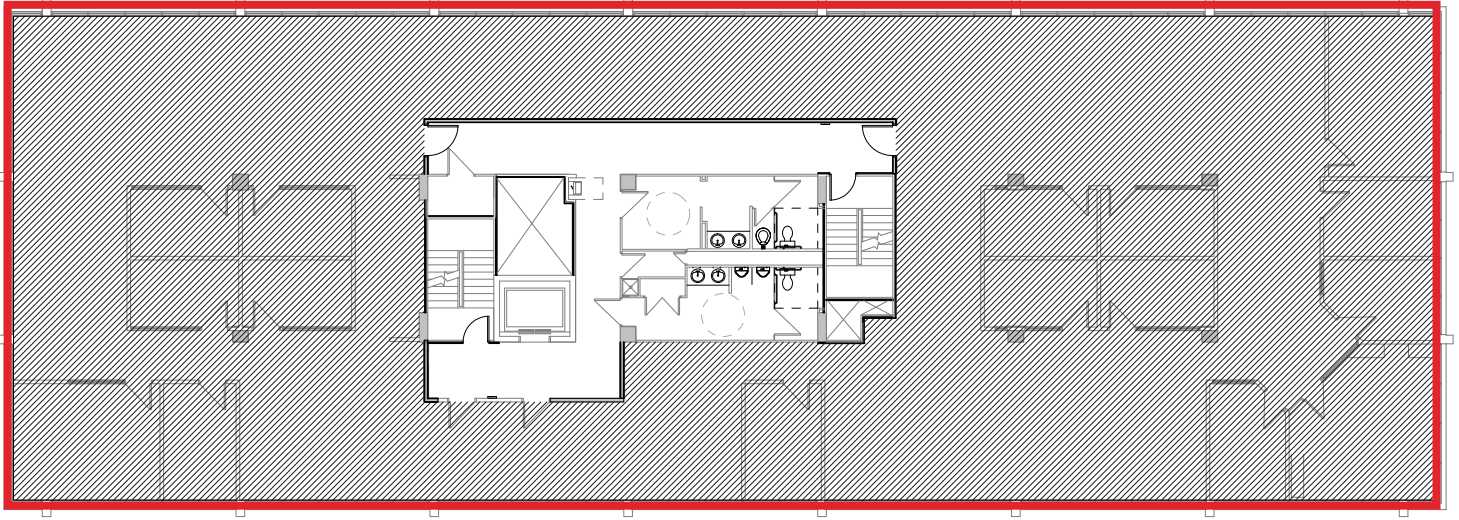


LEVEL 2 - 4,552 SF

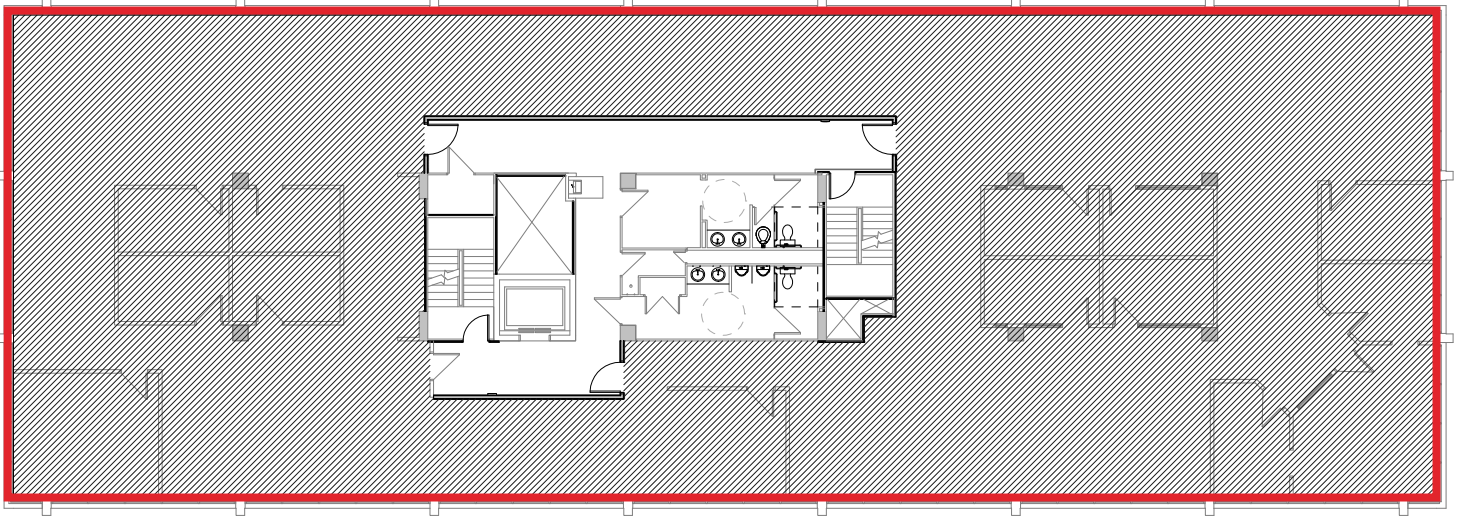


FLOOR PLANS:

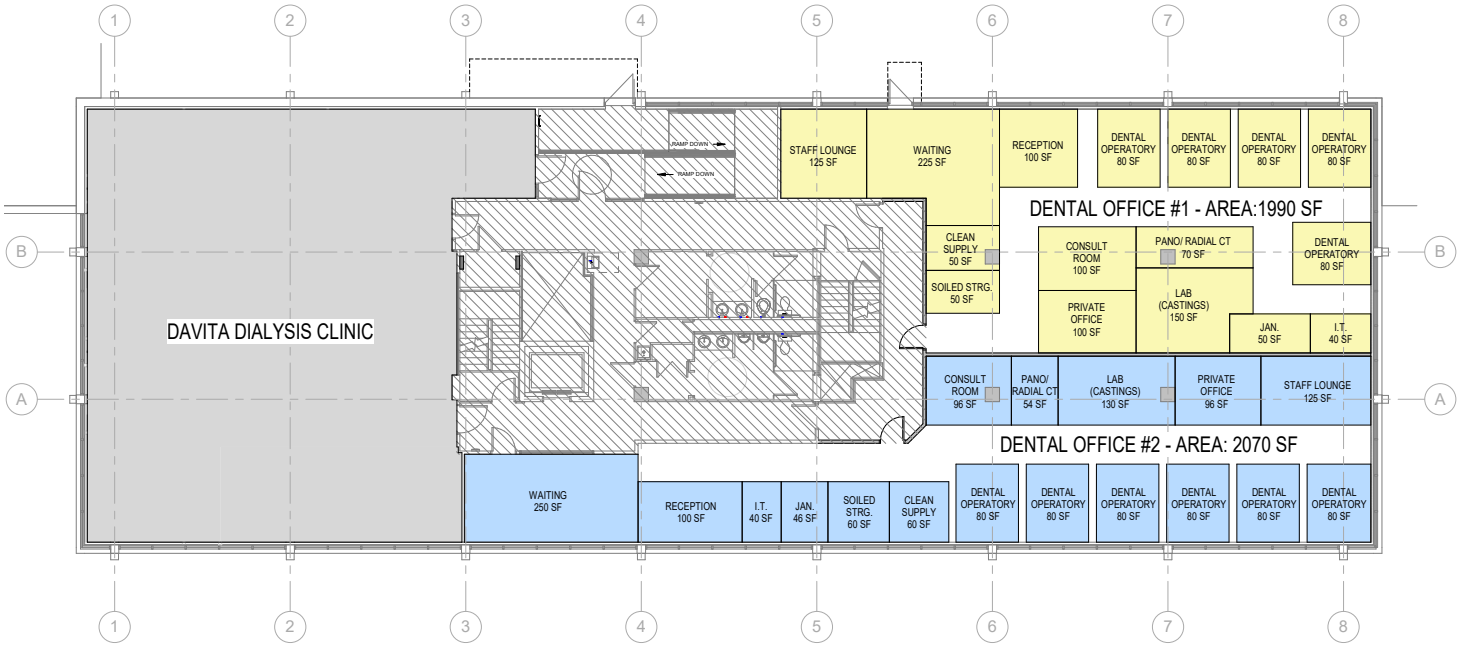
LEVEL 3 - 8,914 SF



LEVEL 4 - 8,914 SF

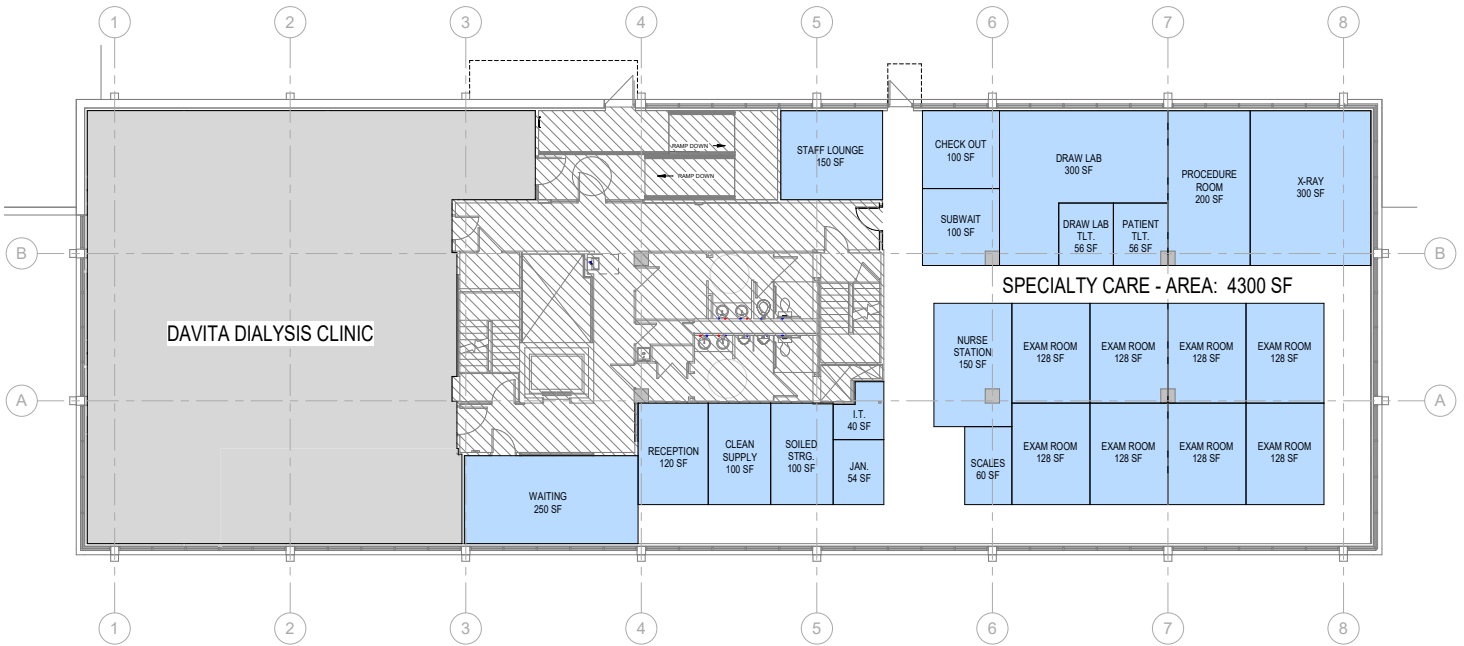


4601 MADISON TEST FIT:



1 LEVEL 2 - TWO DENTAL CLINICS OPTION

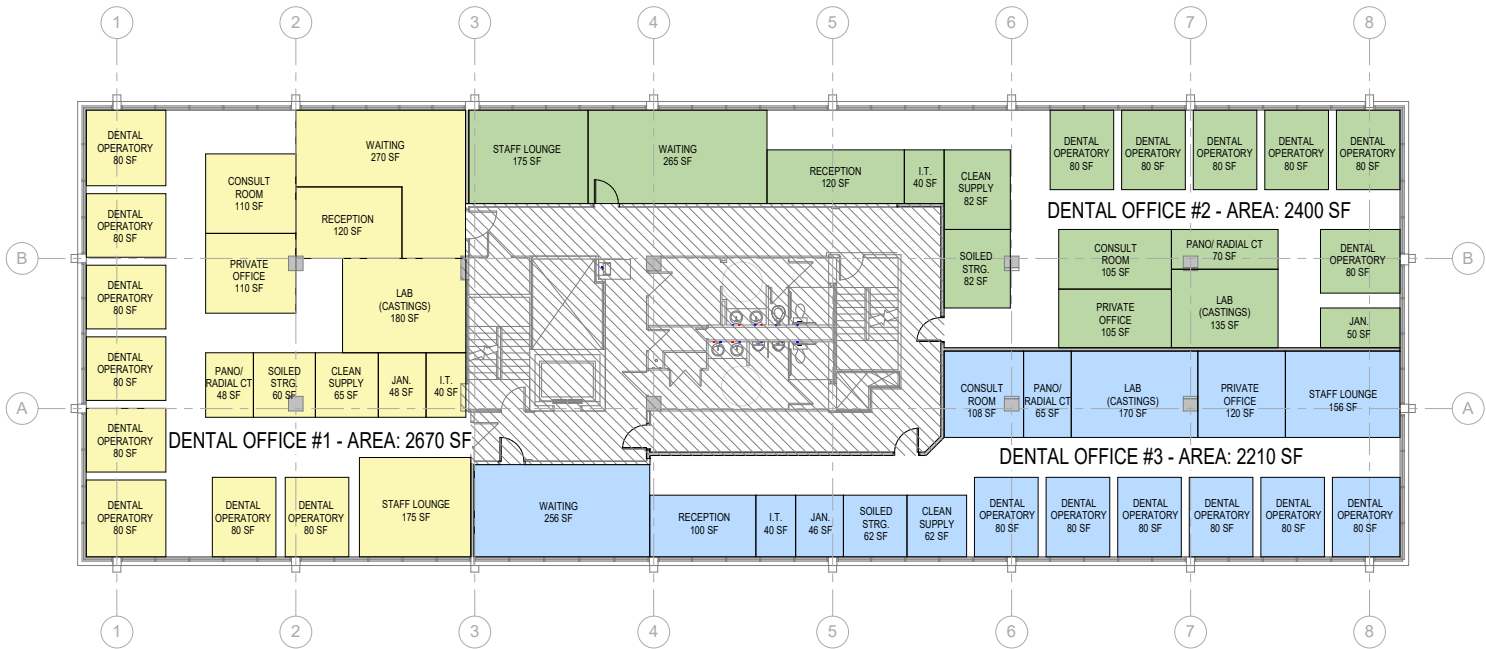
SCALE: 1/8" = 1'-0"



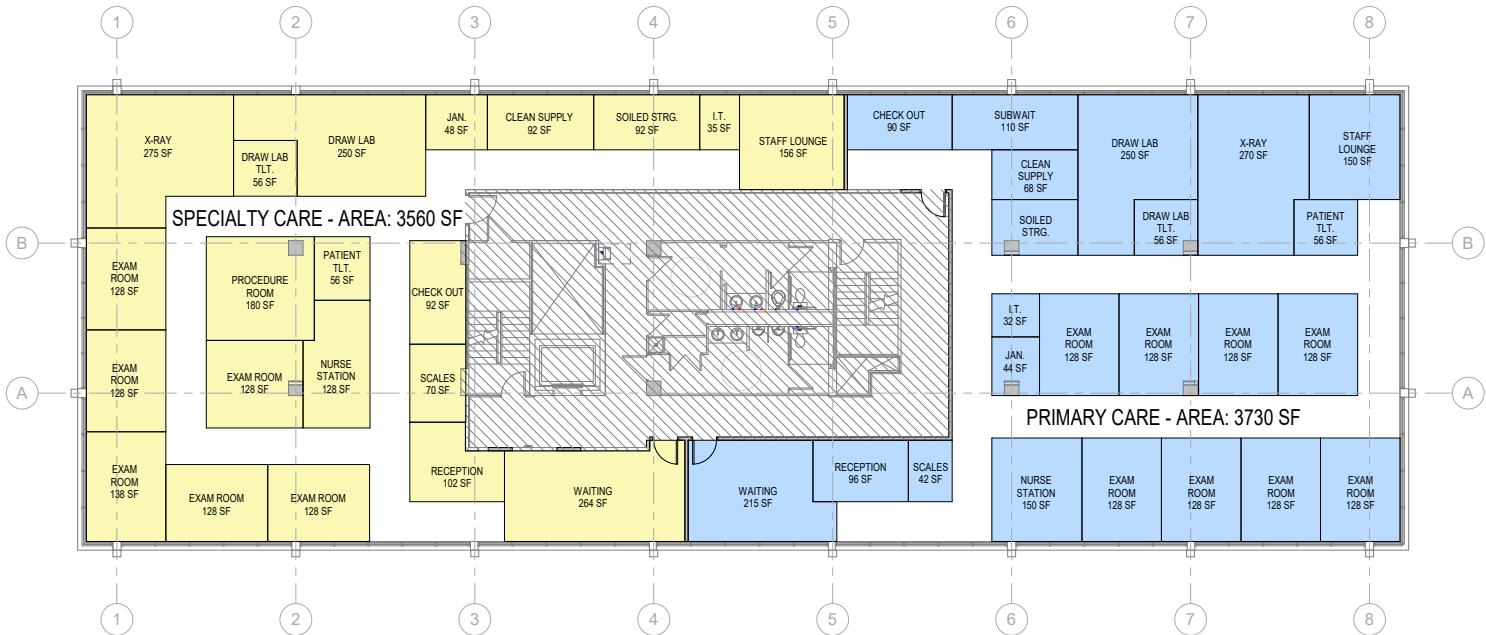
2 LEVEL 2 - SPECIALTY CARE OPTION

SCALE: 1/8" = 1'-0"

4601 MADISON TEST FIT:

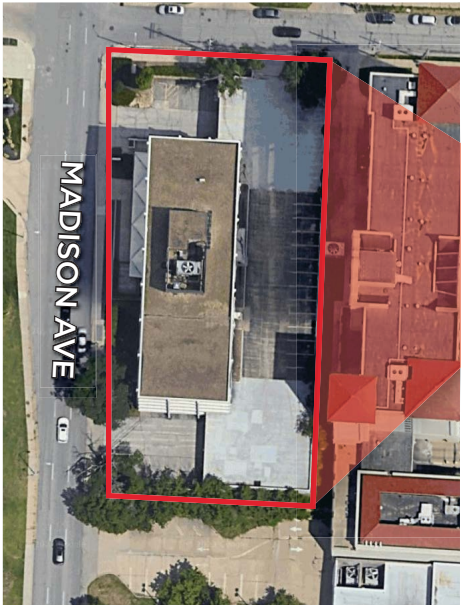


1 LEVELS 3 & 4 - THREE DENTAL CLINICS OPTION
SCALE: 1/8" = 1'-0"

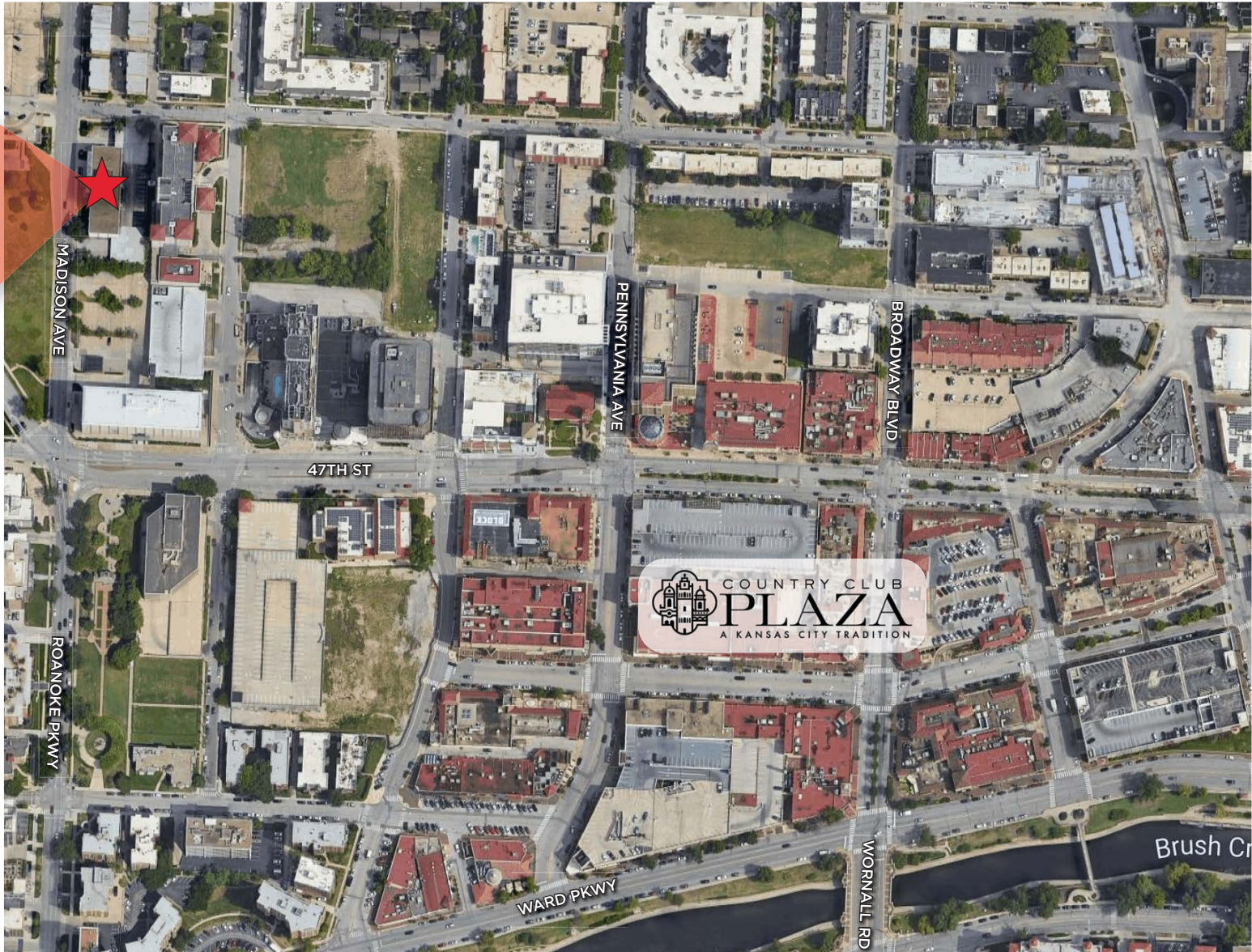


2 LEVELS 3 & 4 - TWO PRIMARY/SPECIALTY CARE CLINICS
SCALE: 1/8" = 1'-0"

AERIAL VIEW:



MADISON AVE:
10,924 CPD



AREA REAL ESTATE ADVISORS

A 4800 MAIN ST, SUITE 400 • KANSAS CITY, MO 64112

P 816.895.4800 W OPENAREA.COM

The information used to create this brochure was gathered from sources deemed reliable. Though we do not doubt its accuracy, we do not guarantee or warranty it. You and your advisors should conduct a careful independent investigation of the information to determine your satisfaction and suitability.