

# LAND FOR LEASE

## STAPLES MILL ROAD | RICHMOND, VA

±2.2 ACRES FOR LEASE



Annie O'Connor | Senior Vice President | 804 697 3451 | [annie.oconnor@thalhimer.com](mailto:annie.oconnor@thalhimer.com)  
Alex T. Wotring | Senior Vice President | 804 344 7163 | [alex.wotring@thalhimer.com](mailto:alex.wotring@thalhimer.com)



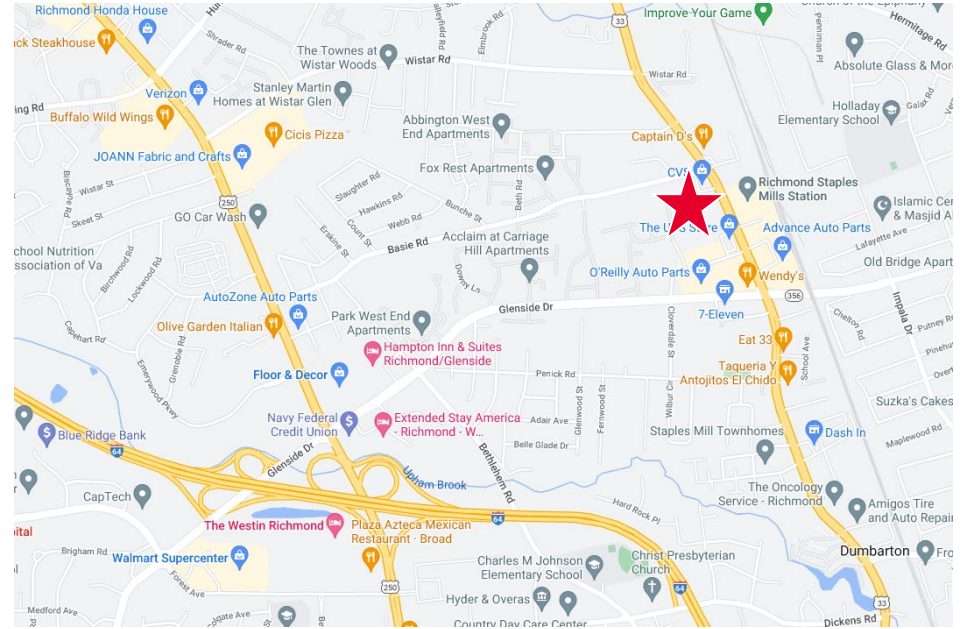


# LAND FOR LEASE

## STAPLES MILL ROAD | RICHMOND, VA

### PROPERTY FEATURES




- ± 1.5 useable acres
- Located across from Amtrak on Staples Mill
- Delivery Q4 2023
- Signalized egress
- Rough graded with utilities to site



### Join Tenants/Nearby Retailers

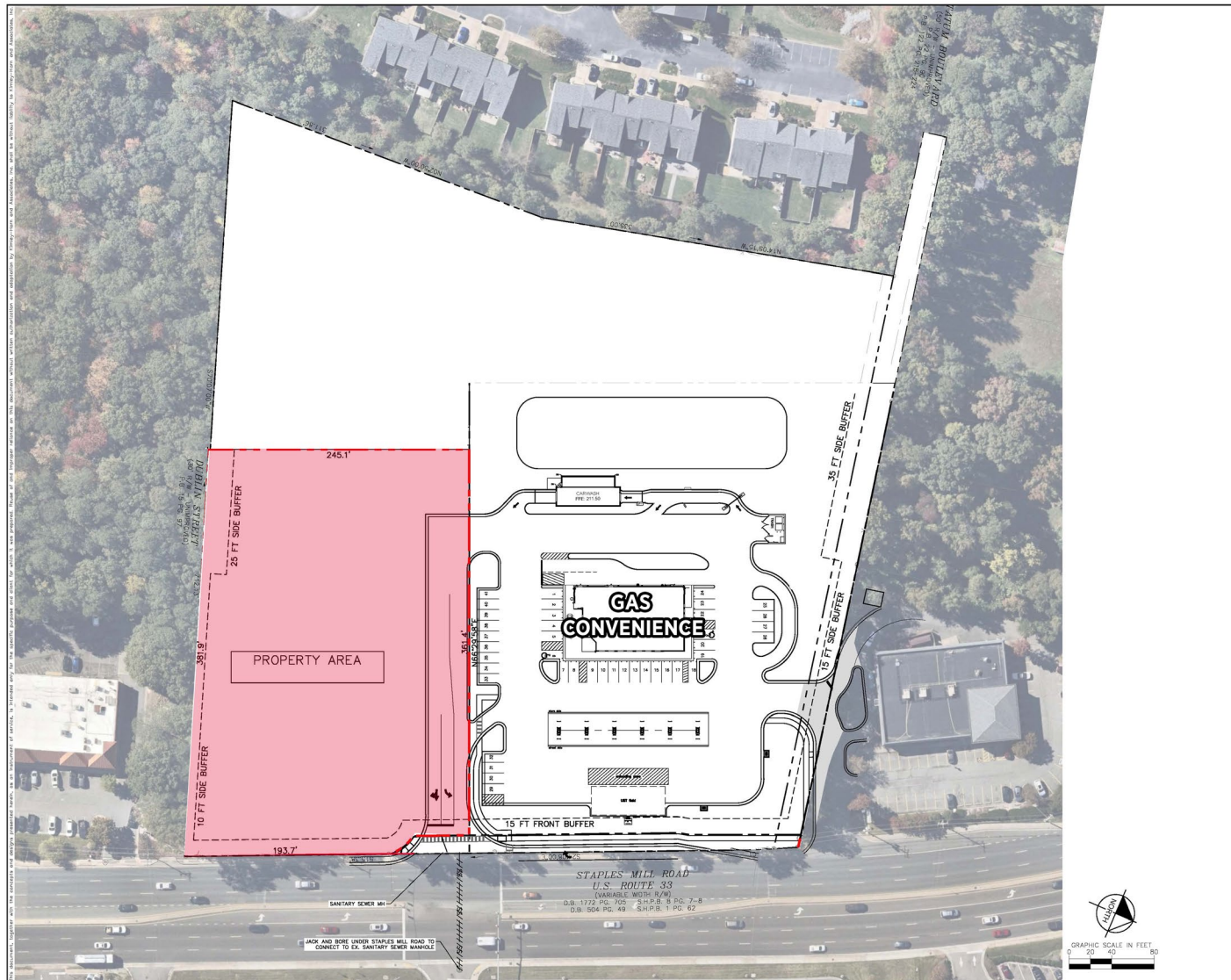


### Demographics

			
	POPULATION	DAYTIME POPULATION	AVERAGE HOUSEHOLD INCOME
1 Mile	12,601	12,694	\$72,596
3 Miles	81,067	110,666	\$94,531
5 Miles	226,377	250,325	\$111,480

# LAND FOR LEASE

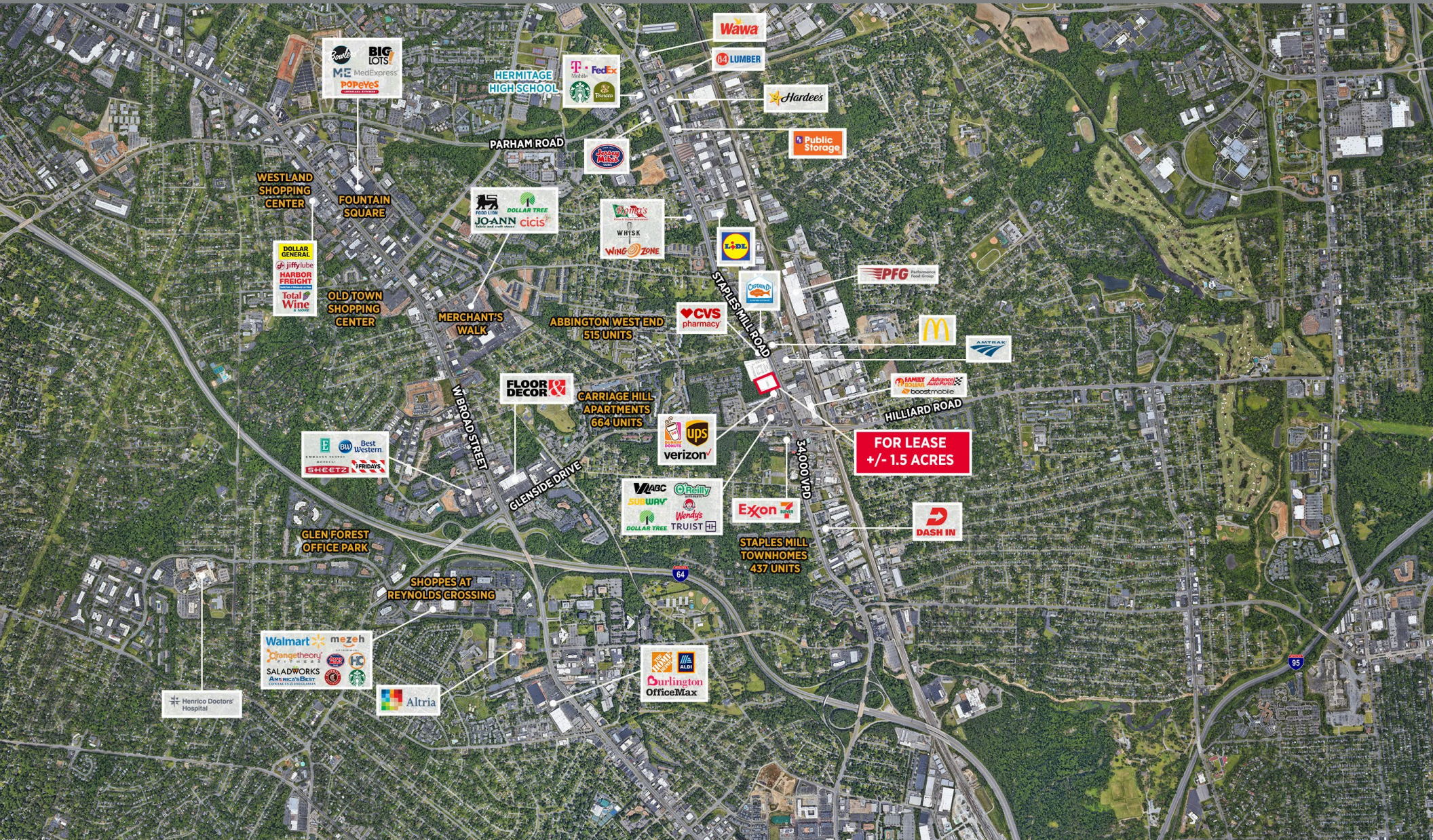
## STAPLES MILL ROAD | RICHMOND, VA





# LAND FOR LEASE

## STAPLES MILL ROAD | RICHMOND, VA





# STAPLES MILL ROAD

Richmond, Virginia

**For more information, please contact:**

Annie O'Connor | Senior Vice President | 804 697 3451 | [annie.oconnor@thalhimer.com](mailto:annie.oconnor@thalhimer.com)

Alex T. Wotring | Senior Vice President | 804 344 7163 | [alex.wotring@thalhimer.com](mailto:alex.wotring@thalhimer.com)



Thalhimer Center  
1100 W. Broad Street  
Glen Allen, VA 23060  
[thalhimer.com](http://thalhimer.com)

Independently Owned and Operated / A Member of the Cushman & Wakefield Alliance

Cushman & Wakefield | Thalhimer © 2025. No warranty or representation, express or implied, is made to the accuracy or completeness of the information contained herein, and same is submitted subject to errors, omissions, change of price, rental or other conditions, withdrawal without notice, and to any special listing conditions imposed by the property owner(s). As applicable, we make no representation as to the condition of the property (or properties) in question.