

NEWNAN PROFESSIONAL CENTER BLDG. B

2301 Newnan Crossing Blvd, Newnan, GA 30265



**SOUTHEAST
HEALTHCARE
ADVISORY
SERVICES**

STEVE HALL
Senior Managing Director,
Healthcare Advisory Services
404.842.6560
steve.hall@transwestern.com

JOHN V. LOPEZ, CCIM, RPA
Managing Director,
Healthcare Advisory Services
404.842.6562
john.lopez@transwestern.com

BO STUART
Vice President,
Healthcare Advisory Services
404.842.6556
bo.stuart@transwestern.com

MARSH HAZLEHURST
Senior Associate,
Healthcare Advisory Services
404.842.6574
marsh.hazlehurst@transwestern.com





EXECUTIVE SUMMARY



Medical Office Building
2,319 RSF Available for Lease



Built in 2018
Renovated 2020



Abundant Free Parking
Available



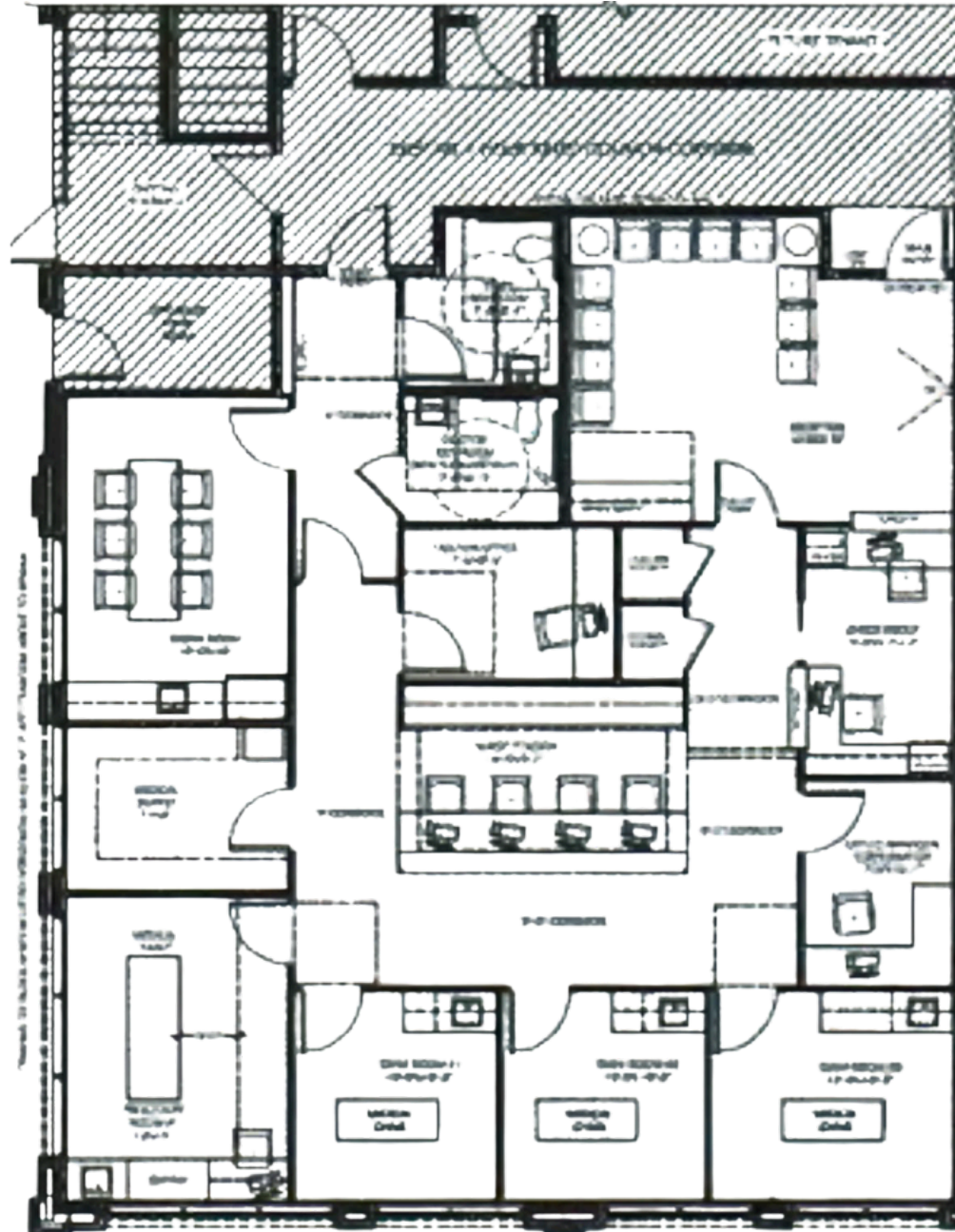
Established Medical
Ecosystem



Excellent Access
and Visibility



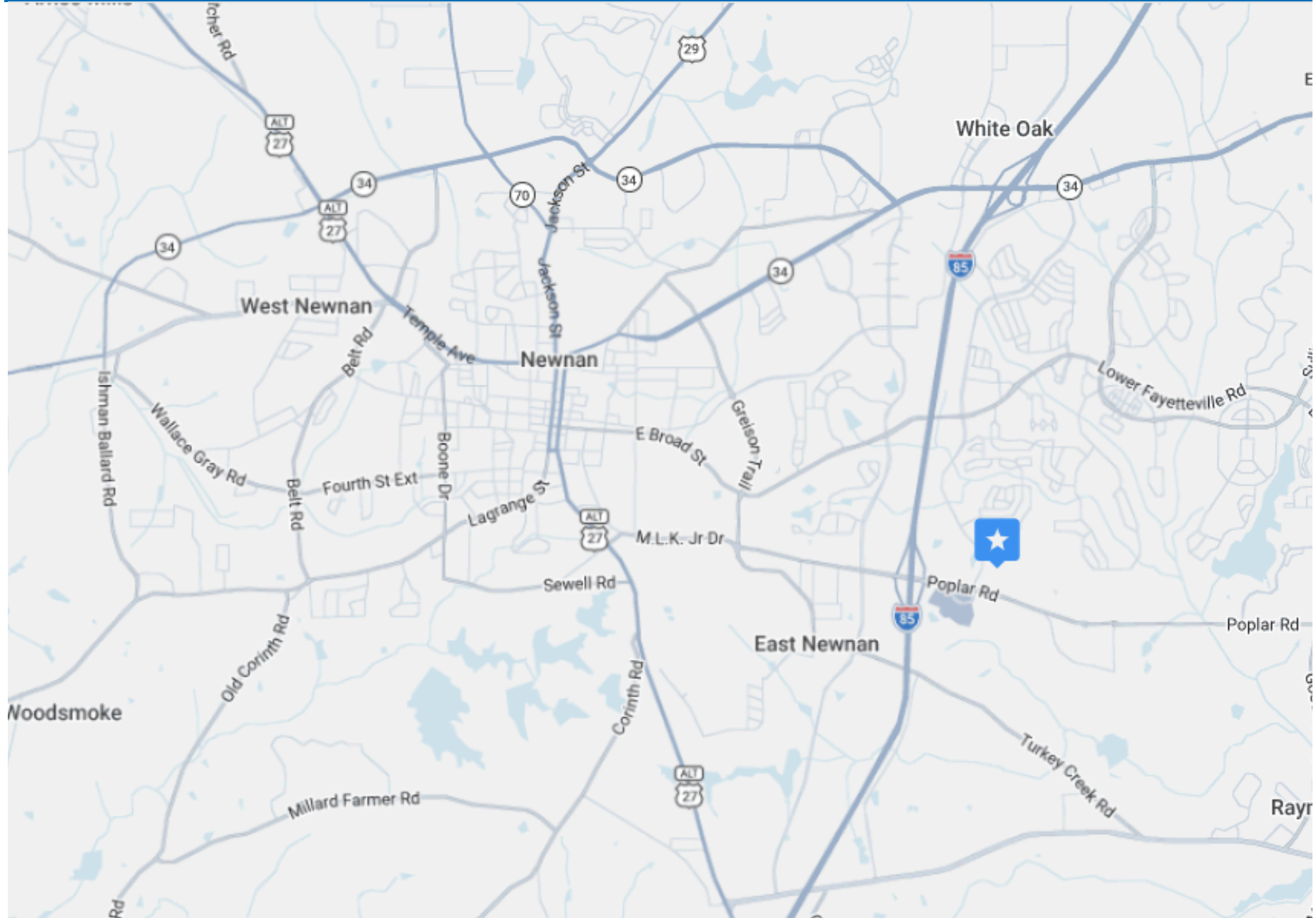
1st Floor - Suite 120



VIRTUAL TOUR



LOCATION MAP



Let's do this.



SOUTHEAST HEALTHCARE ADVISORY SERVICES

STEVE HALL

Senior Managing Director,
Healthcare Advisory Services

404.842.6560

steve.hall@transwestern.com

JOHN V. LOPEZ, CCIM, RPA

Managing Director,
Healthcare Advisory Services

404.842.6562

john.lopez@transwestern.com

BO STUART

Vice President,
Healthcare Advisory Services

404.842.6556

bo.stuart@transwestern.com

MARSH HAZLEHURST

Senior Associate,
Healthcare Advisory Services

404.842.6574

marsh.hazlehurst@transwestern.com