

FOR LEASE > RETAIL

LIVERNOIS PLAZA

6300 WEST SEVEN MILE ROAD | DETROIT, MICHIGAN



IN THE HEART OF AVENUE OF FASHION

> PROPERTY HIGHLIGHTS

- 3,500 to 17,443 SF of Retail For Lease
- Full Basement With Standard Ceiling Height and Service Elevator
- Northeast Hard Corner of Seven Mile Road and Livernois Avenue
- Avenue of Fashion is One of the Most Up and Coming Neighborhoods
- Area Retailers Include: Kuzzo's Chicken & Waffles, Mike's Fresh Market and the New 7.Liv Development to the South on Seven Mile Road

> DEMOGRAPHICS

	1 MILE	3 MILE	5 MILE
POPULATION	18,352	145,426	419,269
AVG. INCOME	\$85,607	\$57,906	\$59,151
HOUSEHOLDS	7,587	62,428	177,252

COLLIERS INTERNATIONAL
 2 Corporate Drive | Suite 300
 Southfield, Michigan 48076

For More Information Call:

BEN HUBERT

PHONE 248 540 1000 EXT 1864

EMAIL ben.hubert@colliers.com



BEN ROSENZWEIG

PHONE 248 540 1000 EXT 1866

EMAIL ben.rosenzweig@colliers.com



colliers.com/detroit

BEN AND BENJI
COLLIERS DETROIT REAL ESTATE



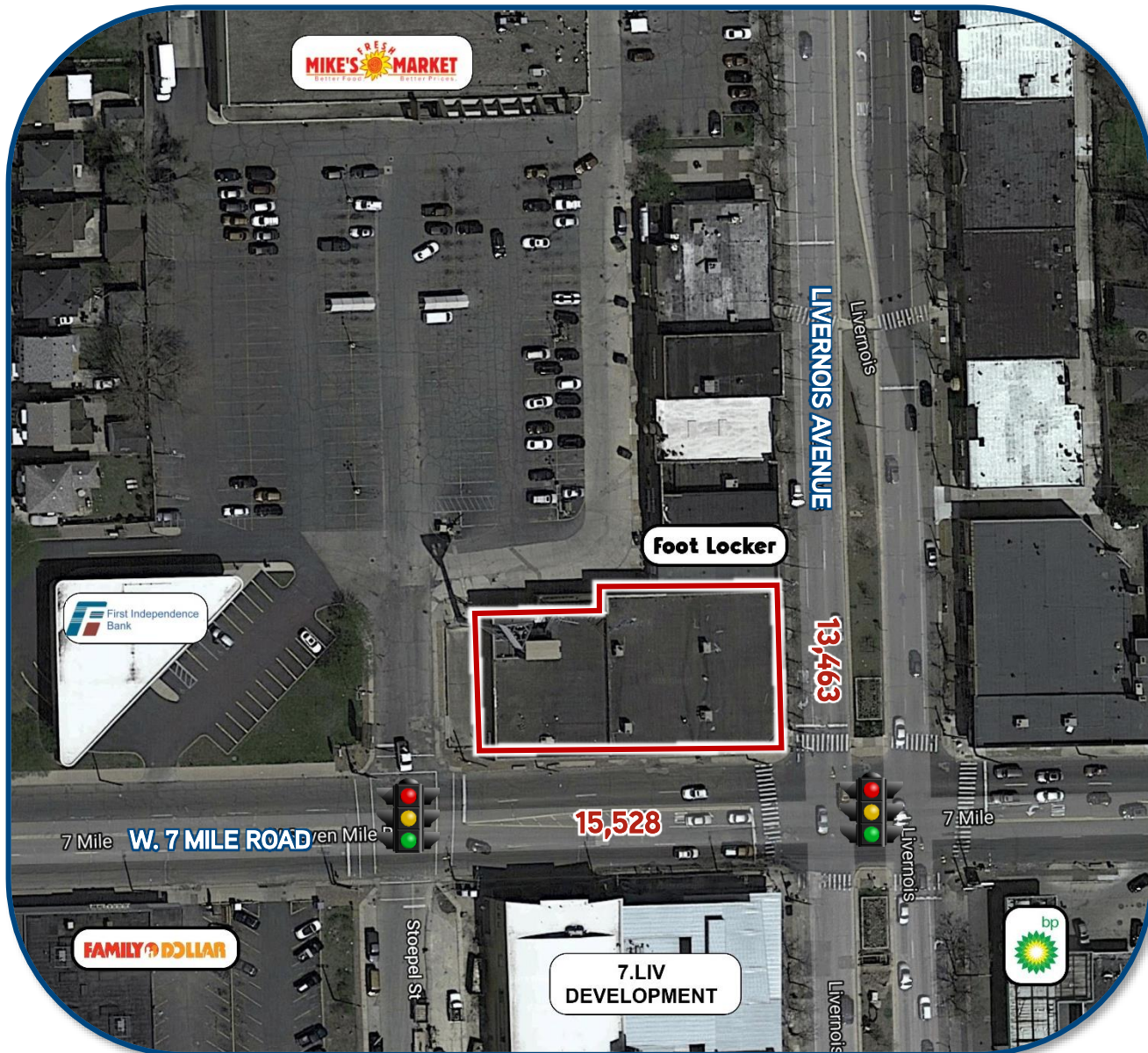
FOR LEASE > RETAIL

LIVERNOIS PLAZA

6300 WEST SEVEN MILE ROAD | DETROIT, MICHIGAN



> AERIAL MAP



BEN HUBERT

PHONE 248 540 1000 EXT 1864
EMAIL ben.hubert@colliers.com



BEN ROSENZWEIG

PHONE 248 540 1000 EXT 1866
EMAIL ben.rosenzweig@colliers.com

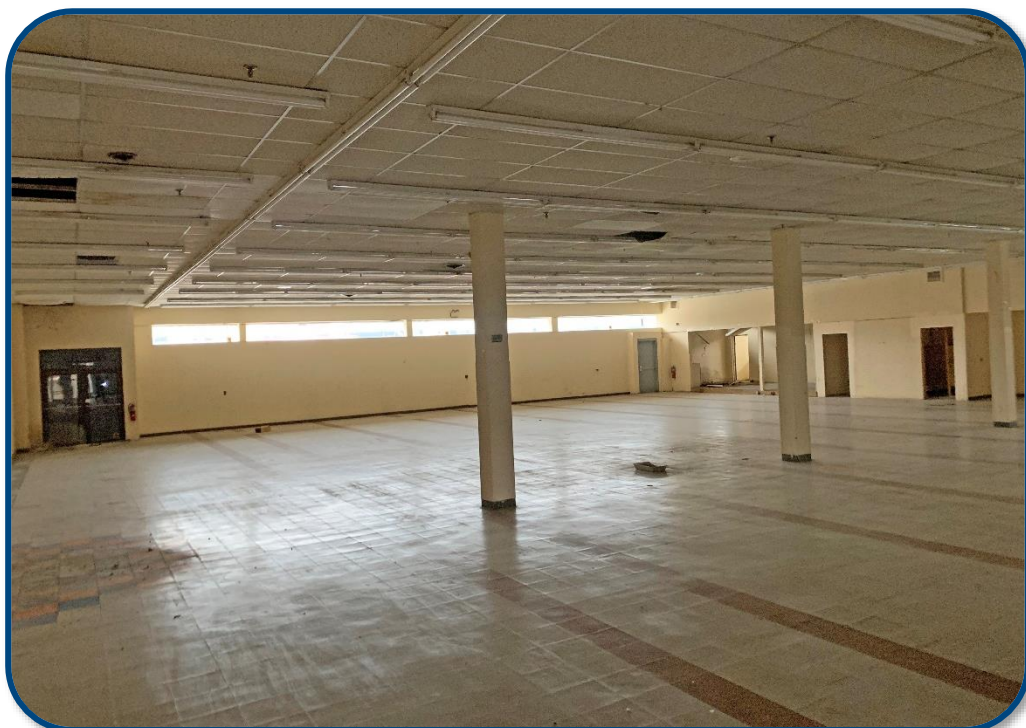
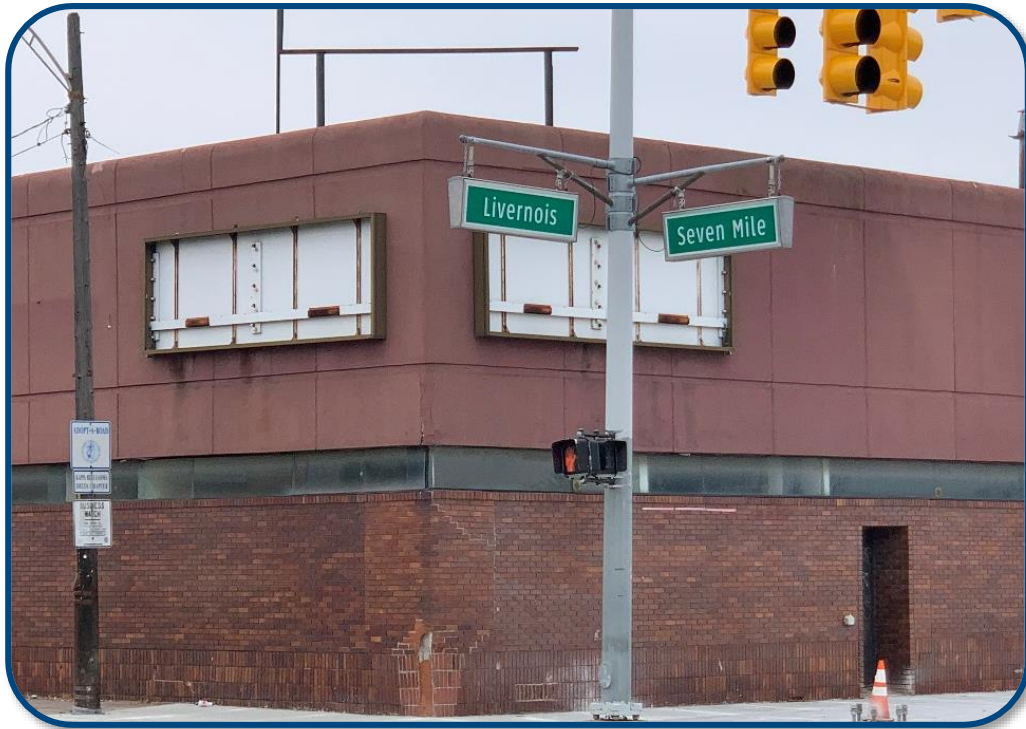
FOR LEASE > RETAIL

LIVERNOIS PLAZA

6300 WEST SEVEN MILE ROAD | DETROIT, MICHIGAN



> PROPERTY PHOTOS



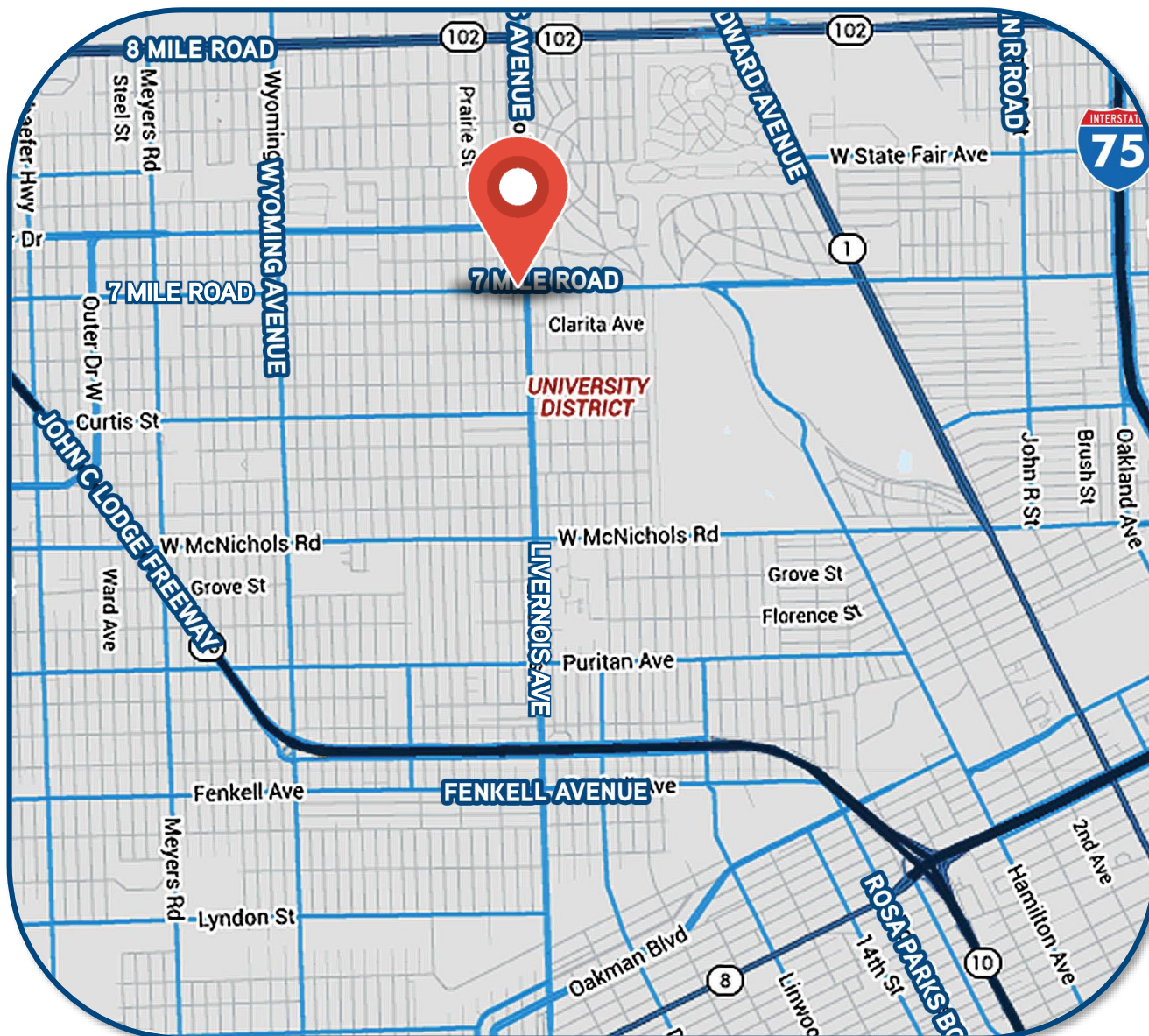
FOR LEASE > RETAIL

LIVERNOIS PLAZA

6300 WEST SEVEN MILE ROAD | DETROIT, MICHIGAN



> LOCATION MAP



BEN HUBERT

PHONE 248 540 1000 EXT 1864
EMAIL ben.hubert@colliers.com



BEN ROSENZWEIG

PHONE 248 540 1000 EXT 1866
EMAIL ben.rosenzweig@colliers.com

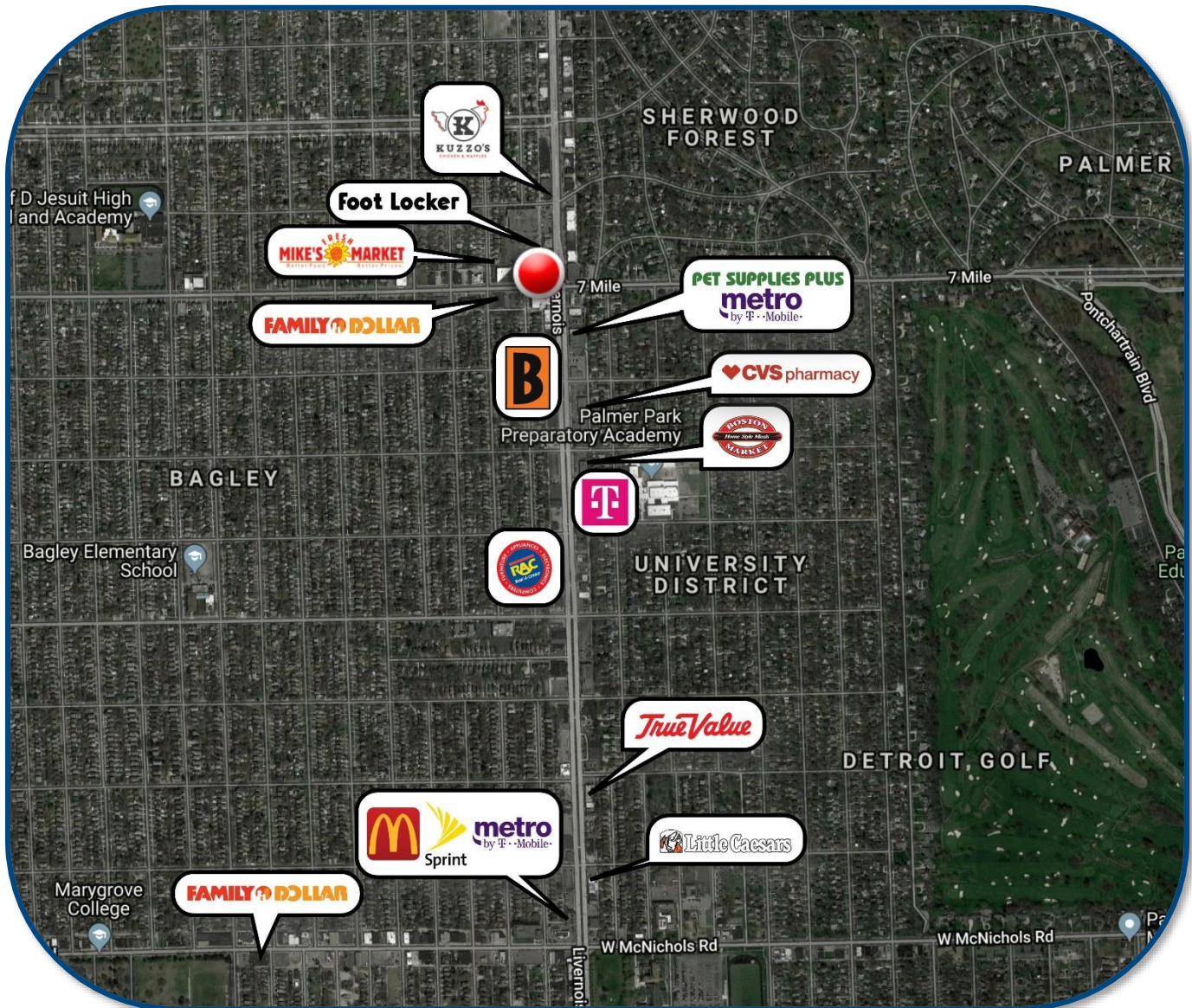
FOR LEASE > RETAIL

LIVERNOIS PLAZA

6300 WEST SEVEN MILE ROAD | DETROIT, MICHIGAN



> AREA MERCHANT MAP



BEN HUBERT

PHONE 248 540 1000 EXT 1864
EMAIL ben.hubert@colliers.com



BEN ROSENZWEIG

PHONE 248 540 1000 EXT 1866
EMAIL ben.rosenzweig@colliers.com

SUMMARY PROFILE

2000-2010 Census, 2019 Estimates with 2024 Projections

Calculated using Weighted Block Centroid from Block Groups

Lat/Lon: 42.4318/-83.142

RS1

6300 W Seven Mile Rd		1 mi radius	3 mi radius	5 mi radius
Detroit, MI 48221				
POPULATION	2019 Estimated Population	18,352	145,426	419,269
	2024 Projected Population	17,454	149,281	433,320
	2010 Census Population	20,380	155,345	440,305
	2000 Census Population	23,542	195,346	547,540
	Projected Annual Growth 2019 to 2024	-1.0%	0.5%	0.7%
	Historical Annual Growth 2000 to 2019	-1.2%	-1.3%	-1.2%
	2019 Median Age	43.9	39.5	38.6
HOUSEHOLDS	2019 Estimated Households	7,587	62,428	177,252
	2024 Projected Households	7,168	64,003	183,523
	2010 Census Households	7,857	62,722	175,284
	2000 Census Households	8,772	73,647	205,717
	Projected Annual Growth 2019 to 2024	-1.1%	0.5%	0.7%
	Historical Annual Growth 2000 to 2019	-0.7%	-0.8%	-0.7%
RACE AND ETHNICITY	2019 Estimated White	12.2%	27.0%	31.8%
	2019 Estimated Black or African American	83.3%	67.6%	61.2%
	2019 Estimated Asian or Pacific Islander	1.0%	1.5%	3.4%
	2019 Estimated American Indian or Native Alaskan	0.3%	0.4%	0.3%
	2019 Estimated Other Races	3.2%	3.5%	3.3%
	2019 Estimated Hispanic	2.0%	2.3%	2.2%
INCOME	2019 Estimated Average Household Income	\$85,607	\$57,906	\$59,151
	2019 Estimated Median Household Income	\$56,944	\$44,060	\$45,814
	2019 Estimated Per Capita Income	\$35,421	\$25,024	\$25,215
EDUCATION (AGE 25+)	2019 Estimated Elementary (Grade Level 0 to 8)	2.2%	3.4%	3.6%
	2019 Estimated Some High School (Grade Level 9 to 11)	8.0%	9.4%	10.0%
	2019 Estimated High School Graduate	22.6%	29.6%	29.4%
	2019 Estimated Some College	26.6%	26.2%	24.9%
	2019 Estimated Associates Degree Only	8.1%	7.6%	7.9%
	2019 Estimated Bachelors Degree Only	18.1%	14.6%	14.7%
	2019 Estimated Graduate Degree	14.4%	9.2%	9.5%
BUSINESS	2019 Estimated Total Businesses	464	4,916	13,877
	2019 Estimated Total Employees	2,615	44,006	118,516
	2019 Estimated Employee Population per Business	5.6	9.0	8.5
	2019 Estimated Residential Population per Business	39.5	29.6	30.2

This report was produced using data from private and government sources deemed to be reliable. The information herein is provided without representation or warranty.