

OFFICE SPACE FOR LEASE

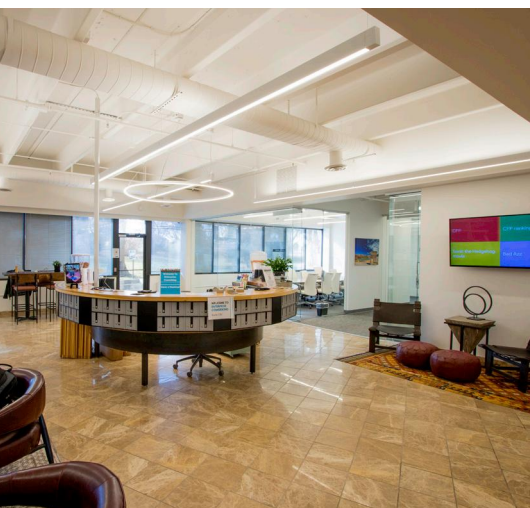
5500 GREENWOOD

5500 Greenwood Plaza Boulevard
Greenwood Village, CO 80111



TRANSWESTERN

REAL ESTATE
SERVICES



AVAILABILITIES

Suite 225
1,728 SF

Suite 230
4,534 SF

Comments

- Prime Denver Tech Center location within walking distance to The Landmark and the Orchard light rail station
- Easy access and great visibility to Interstate 25
- Fiber optic providers include CenturyLink, Zayo, Level 3, and Comcast
- Dog friendly building

Walking distance to numerous hotels, restaurants and retail

Easy access to I-25 and I-225



AREA AMENITIES

- | | | | | |
|---------------------------------|--|---|---|--|
| 1 Westlands Park | 6 Belleview Station <ul style="list-style-type: none">▪ Ambli▪ Backcountry Delicatessen▪ Corvus Coffee▪ Le French Bakery▪ Los Chingones | <ul style="list-style-type: none">▪ Midici▪ Ruth's Chris▪ Sushi-Rama▪ Tap & Burger▪ Urban Egg | 8 Landmark <ul style="list-style-type: none">▪ Bad Daddy's▪ Dionysys Food & Wine Bar▪ Early Bird▪ Hapa▪ Jing▪ Lucy Restaurant | <ul style="list-style-type: none">▪ Monk & Mongoose▪ Pizza Republica▪ Slattery's Irish Pub▪ Ted's Montana Grill▪ Yanni's |
| 2 Club Greenwood | 7 Pappadeaux | | | |
| 3 Running Fox Park | | | | |
| 4 Colorado Athletic Club | | | | |
| 5 DoubleTree Hotel | | | | |

LEASING INFORMATION

David Shapiro
303.407.1466
david.shapiro@transwestern.com

The information provided herein was obtained from sources believed reliable; however, Transwestern makes no guarantees, warranties or representations as to the completeness of accuracy thereof. The presentation of this property is submitted subject to errors, omissions, change of price or conditions, prior to sale or lease, or withdrawal without notice. Copyright © 2021 Transwestern.

5251 DTC Parkway | Suite 1100 | Greenwood Village, CO 80111
T 303.639.3000 www.transwestern.com