

# MEDICAL OFFICE FOR LEASE OR SALE

*±2,514 SF Medical Office  
Condo in San Jose, with  
an Additional ±787 SF of  
Adjacent Space Available*

2039 FOREST AVE, SUITE 201  
SAN JOSE, CA 95128

**AARON FRITZ, CCIM**

Senior Vice President  
408.588.2398  
aaron.fritz@kidder.com  
LIC N° 01216555

**CONOR BURLING**

Associate  
408.588.2341  
conor.burling@kidder.com  
LIC N° 02235389

KIDDER.COM







### *Suite Highlights*

6-8 exam rooms

2-4 private offices

Generous updated lobby and reception area

In-suite staff lounge

In-suite ADA restroom

Call broker to tour

### *Building Highlights*

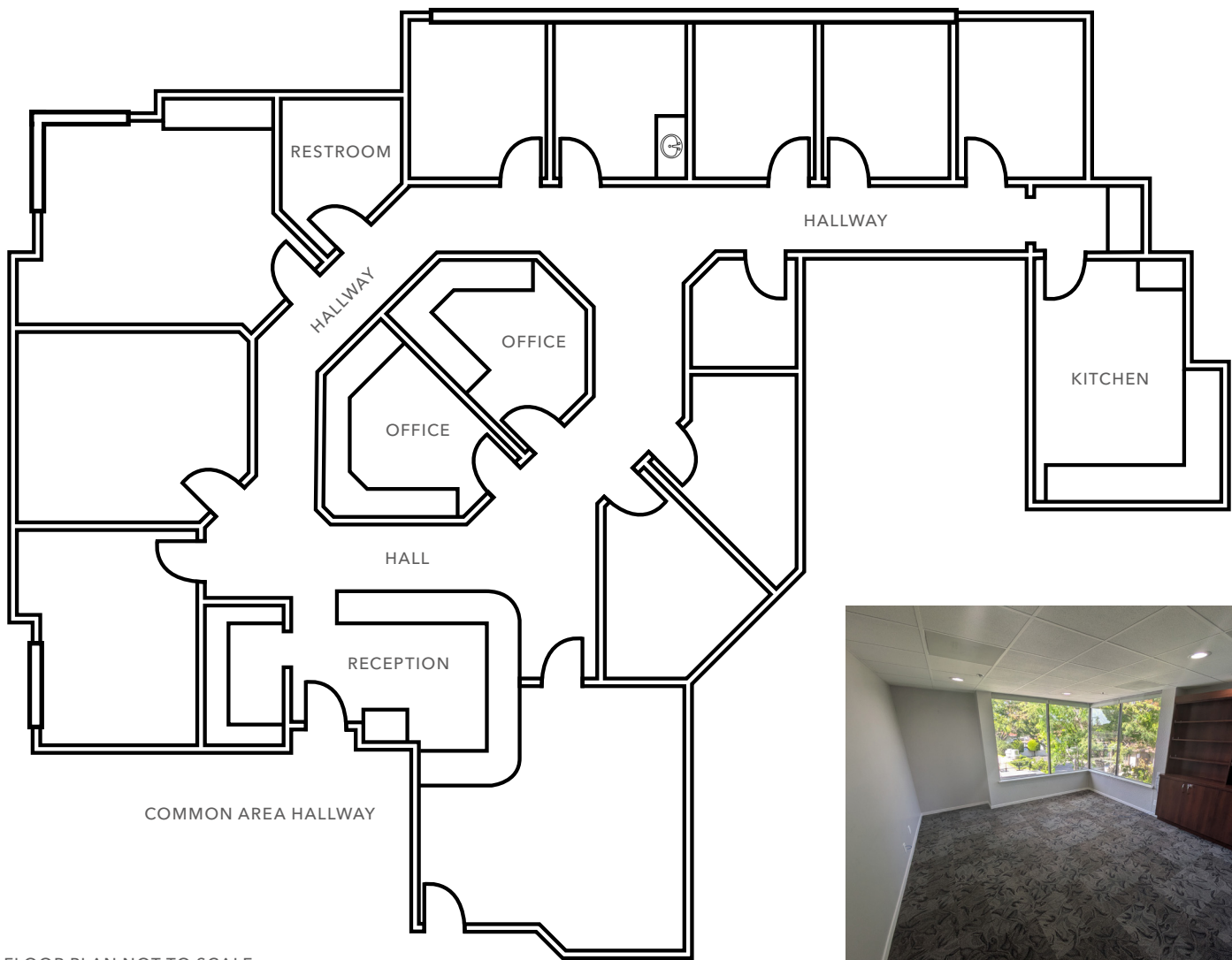
Elevator served

Walking distance to O'Connor Hospital and  
convenient access to Santa Clara Valley  
Medical Center

On-site covered parking

***±2,514 SF***  
AVAILABLE

FLOOR PLAN | SUITE 201



FLOOR PLAN NOT TO SCALE

*±2,514 SF*

AVAILABLE

*NOW*

AVAILABLE







*For more information, contact*

**AARON FRITZ, CCIM**  
 408.588.2398  
 aaron.fritz@kidder.com  
 LIC N° 01216555

**CONOR BURLING**  
 408.588.2341  
 conor.burling@kidder.com  
 LIC N° 02235389

**KIDDER.COM**

This information supplied herein is from sources we deem reliable. It is provided without any representation, warranty, or guarantee, expressed or implied as to its accuracy. Prospective Buyer or Tenant should conduct an independent investigation and verification of all matters deemed to be material, including, but not limited to, statements of income and expenses. Consult your attorney, accountant, or other professional advisor. All Kidder Mathews designs are the sole property of Kidder Mathews. Branded materials and layouts are not authorized for use by any other firm or person.

