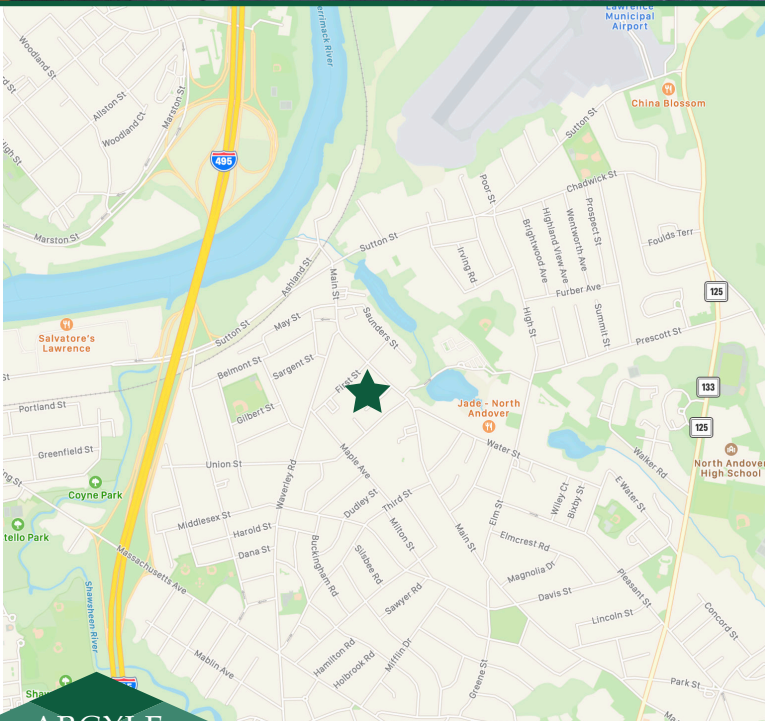


FIRST & MAIN MARKETPLACE

RETAIL SPACE FOR LEASE
10,000+ SF (SUB-DIVIDABLE)
107 - 127 Main Street • North Andover, MA



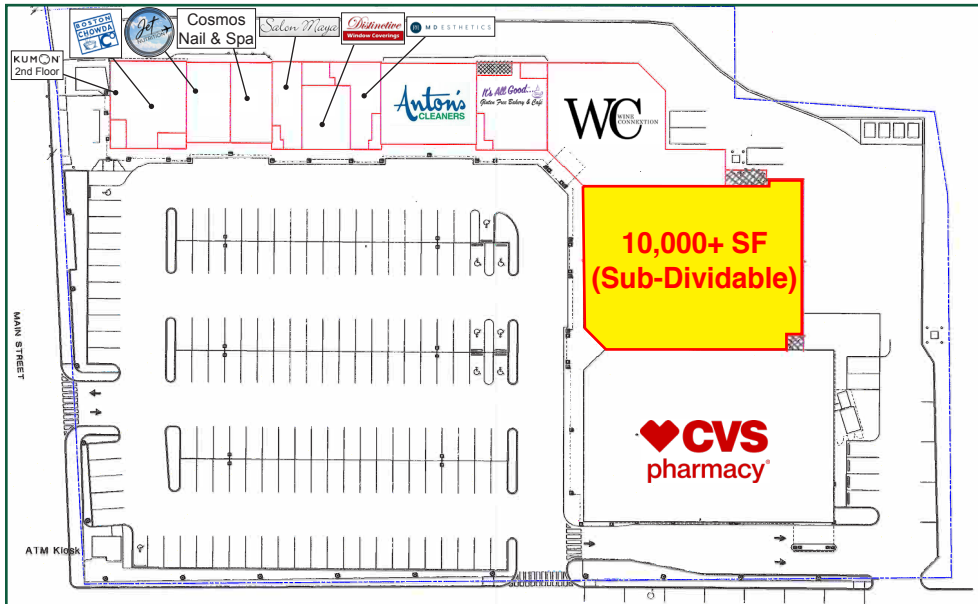
- **FOR LEASE: 10,000+ SF (SUB-DIVIDABLE)**
- Largest retail center in downtown North Andover
- 50,000 SF shopping center
- 160+ parking spaces
- One block from the US Post Office
- Approximately 1.5 miles from I-495
- Other retails in the center include: CVS, Wine Connection, Anton's Dry Cleaners, Boston Chowda Company and more

ARGYLE
REALTY
GROUP

Argyle Realty Group, LLC - Daniel J. Connelly
21 High Street, Suite 305B - North Andover, MA 01845
dan@arg.boston - 617.784.3239

FIRST & MAIN MARKETPLACE

RETAIL SPACE FOR LEASE
10,000+ SF (SUB-DIVIDABLE)
 107 - 127 Main Street • North Andover, MA



DEMOGRAPHICS	1 Mile	3 Mile	5 Mile
Population	13.7K	137K	212K
Employees	12.4K	53.8K	95.4K
Median Age	38	35	37
North Andover Average HH Income	\$155,181		

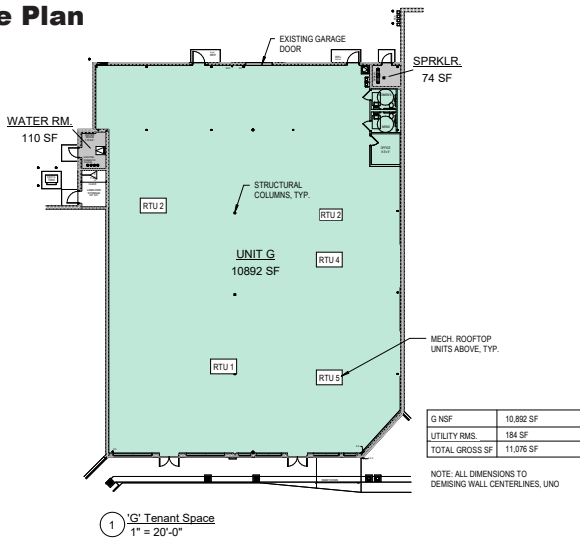


Argyle Realty Group, LLC - Daniel J. Connelly
 21 High Street, Suite 305B - North Andover, MA 01845
 dan@arg.boston - 617.784.3239

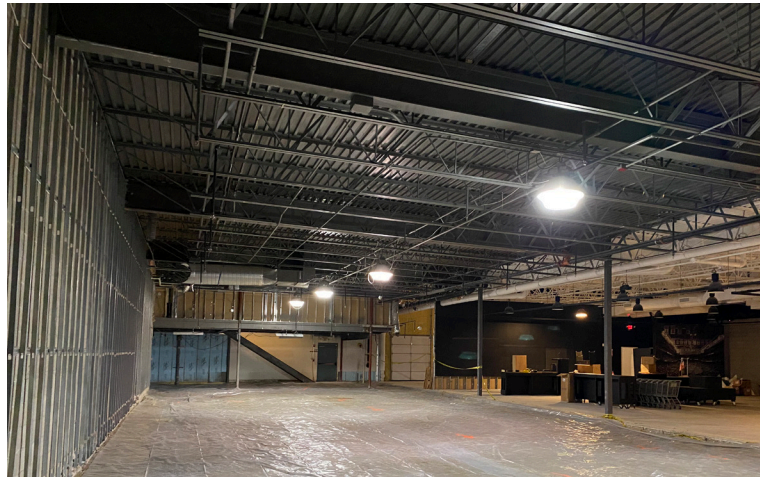
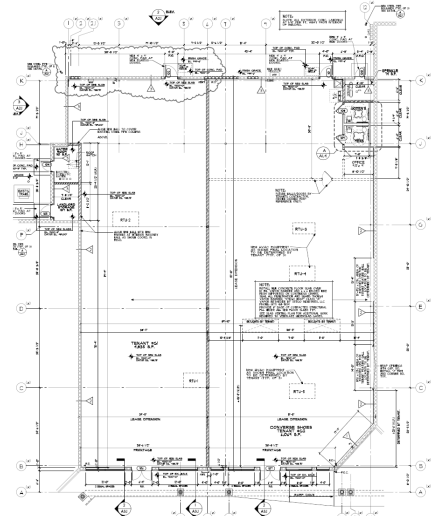
FIRST & MAIN MARKETPLACE

RETAIL SPACE FOR LEASE
10,000+ SF (SUB-DIVIDABLE)
 107 - 127 Main Street • North Andover, MA

Space Plan



Sub-Divided Space Plan



The information has been obtained from sources believed to be reliable, however, no warranty or representation, expressed or implied, is made as to the accuracy of the information contained herein, and same is submitted subject to errors, omissions, change in price, rental or other conditions, or withdrawal without notice.



Argyle Realty Group, LLC - Daniel J. Connelly
 21 High Street, Suite 305B - North Andover, MA 01845
 dan@arg.boston - 617.784.3239