

OFFICE SPACE & EXECUTIVE SUITES FOR LEASE

6901 SW 24th Ave, Gainesville, FL 32607



2ND FLOOR | 10,875± RSF | \$15/SF NNN
2ND & 3RD FLOOR | EXECUTIVE SUITES | \$500/MONTH FULL SERVICE*
2ND & 3RD FLOOR | DESKS | \$250/MONTH FULL SERVICE*

**DOES NOT INCLUDE INTERNET, PHONE OR IN-SUITE JANITORIAL*

DAN DROTOS, MSRE, SIOR, CCIM
352.420.9889
ddrotos@lee-associates.com

LAUREN VAZQUEZ, SIOR
352.222.4590
lvazquez@lee-associates.com

RORY CAUSSEUX, P.E.
352.317.6341
rcausseaux@lee-associates.com

 **LEE &
ASSOCIATES**
COMMERCIAL REAL ESTATE SERVICES

PROPERTY DETAILS

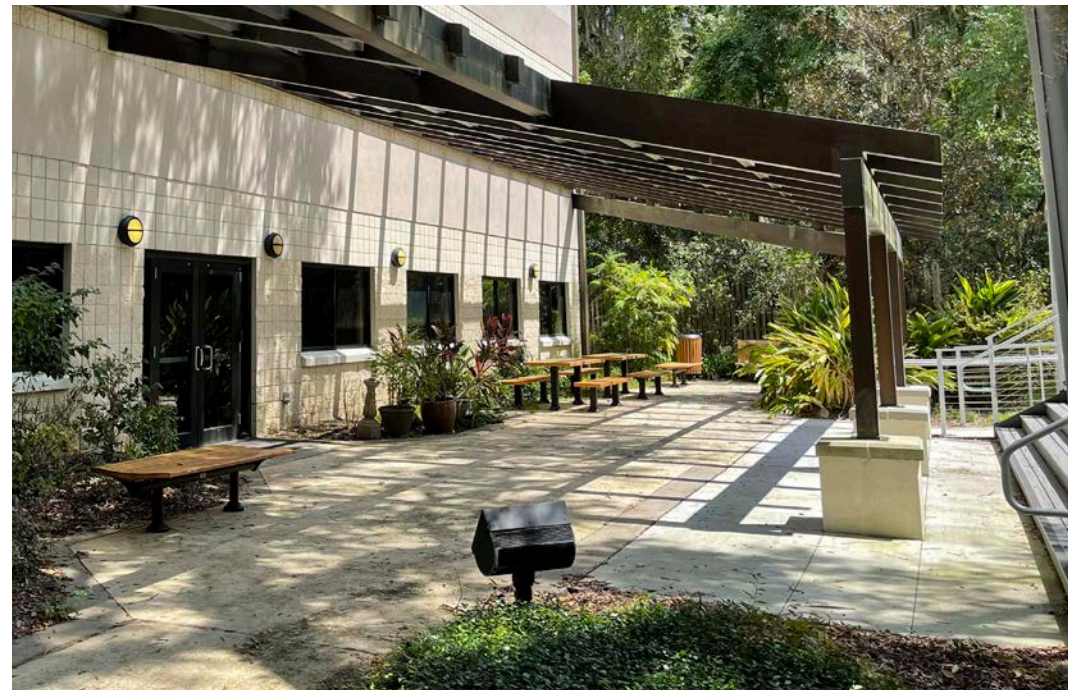
6901 SW 24th Ave, Gainesville, FL 32607

Prime office space, executive suites and desks are for lease in a modern 3-story building located on the SW 24th Avenue corridor with an average daily traffic count of 19,000 vehicles.

Spaces are located in a free-standing building that has three floors with east and west stairwells and two central elevators allowing for easy access to all floors. A large office space can be leased on the 2nd floor, or individual executive suites and desks can be leased on both the 2nd and 3rd floors. There is a fire sprinkler system throughout the building and a Kantech Access Control system has been installed to remotely access and monitor the building. The building had a new roof installed February of 2022. The parking lot offers ample space for employees, customers, or patients, and features elevated solar panels that provide shaded parking from the Florida sun.

The first floor has a gym that can be utilized by tenants once certain requirements have been met (see below* or page 6). This 2,500± SF gym is located on the first floor and is accessible off the main lobby or through a separate outside entrance. The gym has treadmills, elliptical machines, free weights, weight machines and locker rooms with showers.

**Tenant access to the first-floor gym is subject to the following conditions: individuals must complete a one-hour session with the on-site trainer at the prevailing rate, sign a liability waiver, and provide proof of medical insurance. Upon fulfillment of these requirements, gym access is available for a monthly fee of \$15.*



PROPERTY INFORMATION

6901 SW 24th Ave, Gainesville, FL 32607

Total Building Area:

35,821± SF Total

1st floor: 15,628± SF

2nd floor: 14,298± SF

3rd floor: 5,895± SF

Year Built: 2008

Floors: Three

Parking:

Ample solar-covered parking

Zoning: PD-Vocational

ROOF: New roof installed in February 2022

Security:

Kantech access control system installed, allowing for remote monitoring of building

Office Features:

- Private offices
- Creative workspaces

Fire Safety:

Fire sprinkler system throughout building

Daily Traffic Exposure:

SW 24th Ave: 19,000 AADT

Additional Features:

- Multipurpose room with projection and retractable screens
- Kitchen and vending area
- High-efficiency-- Solar array offsets 50% of electricity costs, on average
- Natural light
- Sound masking



2ND FLOOR | 10,875± RSF | \$15/SF NNN

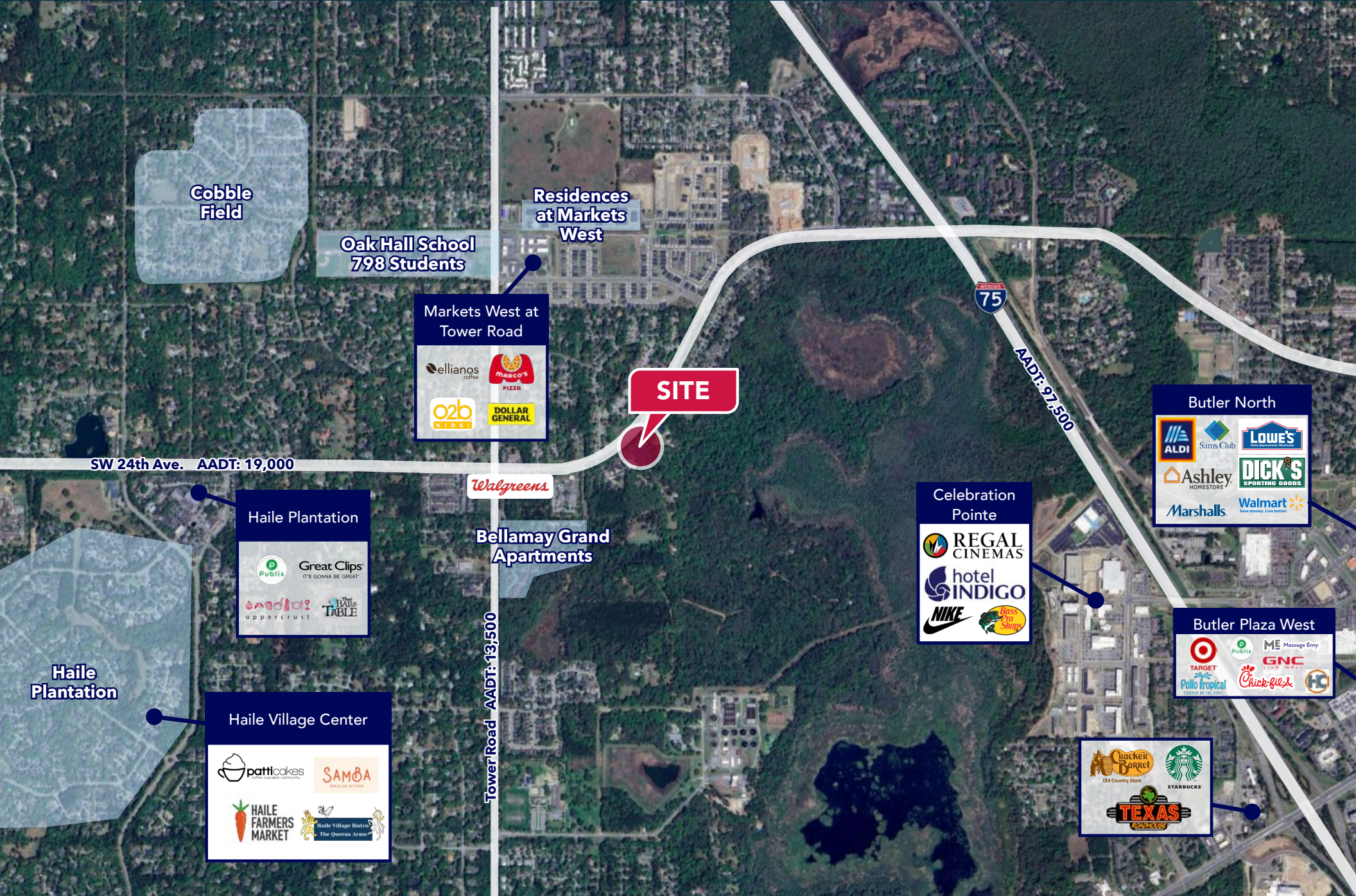
2ND & 3RD FLOOR | EXECUTIVE SUITES | \$500/MONTH FULL SERVICE*

2ND & 3RD FLOOR | DESKS | \$250/MONTH FULL SERVICE*

**DOES NOT INCLUDE INTERNET, PHONE OR IN-SUITE JANITORIAL*

LOCATION

6901 SW 24th Ave, Gainesville, FL 32607



Cobble Field

Oak Hall School
798 Students

Residences at Markets West

Markets West at Tower Road

ellianos coffee MARCO'S PIZZA
o2b KIDZ DOLLAR GENERAL

SITE

SW 24th Ave. AADT: 19,000

Haile Plantation

Publix Great Clips
uppercrust THE BAR TABLE

Bellamay Grand Apartments

Walgreens

Tower Road AADT: 13,500

Haile Village Center

patticakes SAMBA
HAILE FARMERS MARKET Haile Village Bistro The Queens Arms

75

AADT: 97,500

Butler North

ALDI Sams Club LOWE'S
Ashley HOMESTORE DICK'S SPORTING GOODS
Marshall's Walmart

Celebration Pointe

REGAL CINEMAS
hotel INDIGO
NIKE Bass Pro Shops

Butler Plaza West

TARGET Publix ME Massage Envy
Pollo tropical Chick-fil-A FC

Racker Barrel Old Country Store STARBUCKS
TEXAS

LOCATION

6901 SW 24th Ave, Gainesville, FL 32607



2.5 miles to I-75

3.1 miles to University of Florida campus

5.7 miles to Ben Hill Griffin Stadium

12.7 miles to Gainesville Regional Airport

79 miles to Jacksonville

115 miles to Orlando

133 miles to Tampa

147 miles to Tallahassee

The subject site is located in Southwestern Alachua County near the intersection of SW 24th Avenue and SW 75th Street (Tower Road). This portion of Alachua County is unincorporated and subject to the regulatory authority of Alachua County. The City Limits of Gainesville extend west of I-75 to within 0.2 miles to the northeast of the subject site along SW 24th Avenue. The site is located 1.2 miles west of I-75 on SW 24th Avenue.

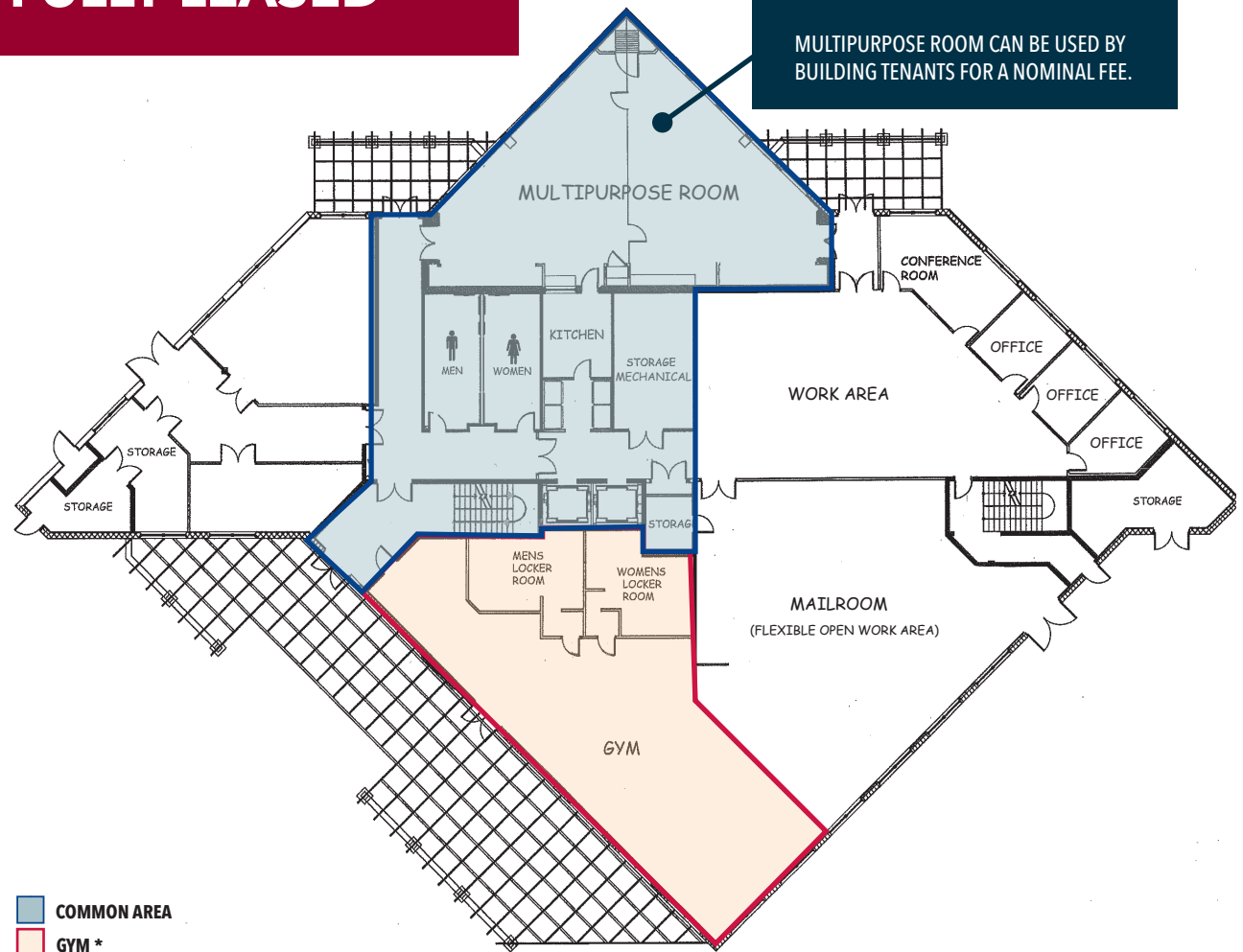
FIRST FLOOR

15,628± SF

FULLY LEASED

The first floor has more than 15,628± SF available. It has a large, multipurpose room, which can be split into two separate rooms— each with its own projection system and retractable screens. This area is connected to a fully-equipped kitchen with a commercial grade ice maker, microwaves, stove, oven, dishwasher, refrigerator and freezer for convenient catering of corporate meetings, training classes or events. There is also a separate room for a vending area.

The rest of the first floor is divided into an open mailroom area, large areas with cubicle workstations, private offices, telecommunications closet, two mechanical rooms, storage, and restrooms. In addition, there is a full 2,500± SF gym on the first floor that is accessible off the main lobby or through a separate outside entrance. The gym has treadmills, elliptical machines, free weights, weight machines, and locker rooms with showers.



**Tenant access to the first-floor gym is subject to the following conditions: individuals must complete a one-hour session with the on-site trainer at the prevailing rate, sign a liability waiver, and provide proof of medical insurance. Upon fulfillment of these requirements, gym access is available for a monthly fee of \$15.*

DAN DROTOS, MSRE, SIOR, CCIM
352.420.9889
ddrotos@lee-associates.com

LAUREN VAZQUEZ, SIOR
352.222.4590
lvazquez@lee-associates.com

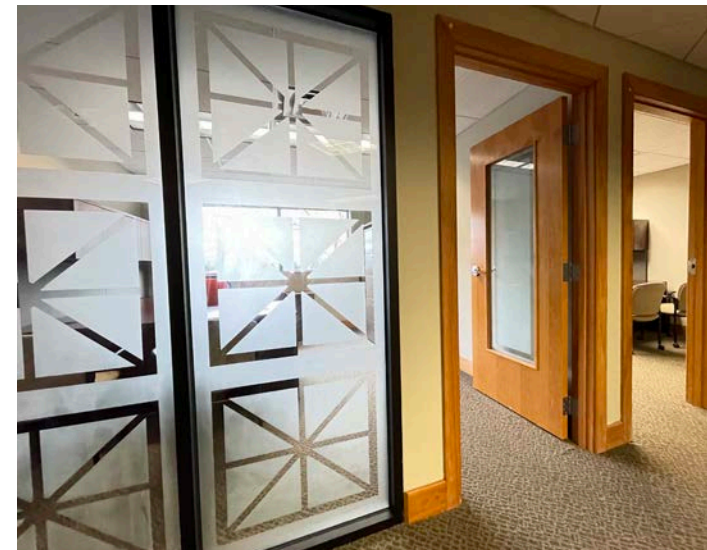
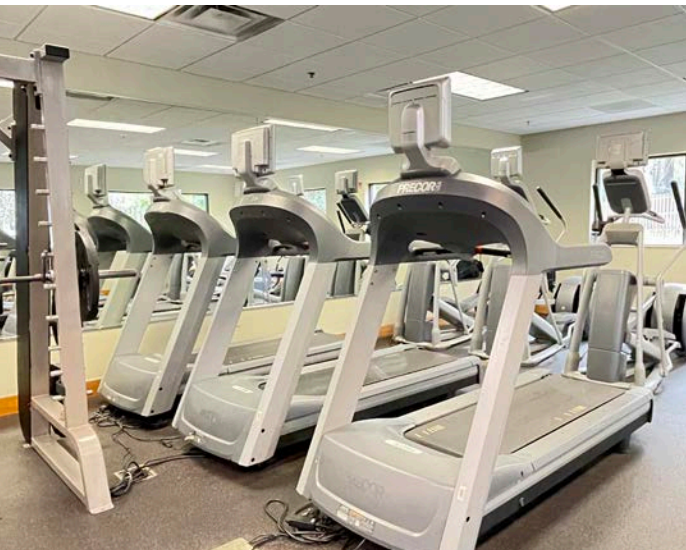
RORY CAUSSEAU, P.E.
352.317.6341
rcausseau@lee-associates.com

LEE & ASSOCIATES
COMMERCIAL REAL ESTATE SERVICES

FIRST FLOOR

15,628± SF

FULLY LEASED



DAN DROTOS, MSRE, SIOR, CCIM
352.420.9889
ddrotos@lee-associates.com

LAUREN VAZQUEZ, SIOR
352.222.4590
lvazquez@lee-associates.com

RORY CAUSSEUX, P.E.
352.317.6341
rcausseux@lee-associates.com

 **LEE &
ASSOCIATES**
COMMERCIAL REAL ESTATE SERVICES

SECOND FLOOR

13,498± SF

The second floor has 13,498± SF with many possible layouts. It is currently divided into 13 private offices with windows, a large conference room, large training room, copy area and spacious open areas for workstations or call center with a raised observation platform. The second floor also has a mechanical room, telecommunications closet, storage and restrooms.

Executive Suites and desks are now available for lease. Offering five suites ranging from 148± SF to 187± SF. A common, large waiting area is shared with all offices. See floor plan for details.

2ND FLOOR LEASE OPTIONS:

Office Space: 10,870± RSF
(8,845± USF) | \$15/SF NNN

Executive Offices: 148± to 187± SF
| \$500/month Full Service*

Desks (in open area): 2 available
| \$250/month Full Service*

*Does not include internet, phone or in-suite janitorial

2nd Floor Executive Suites:

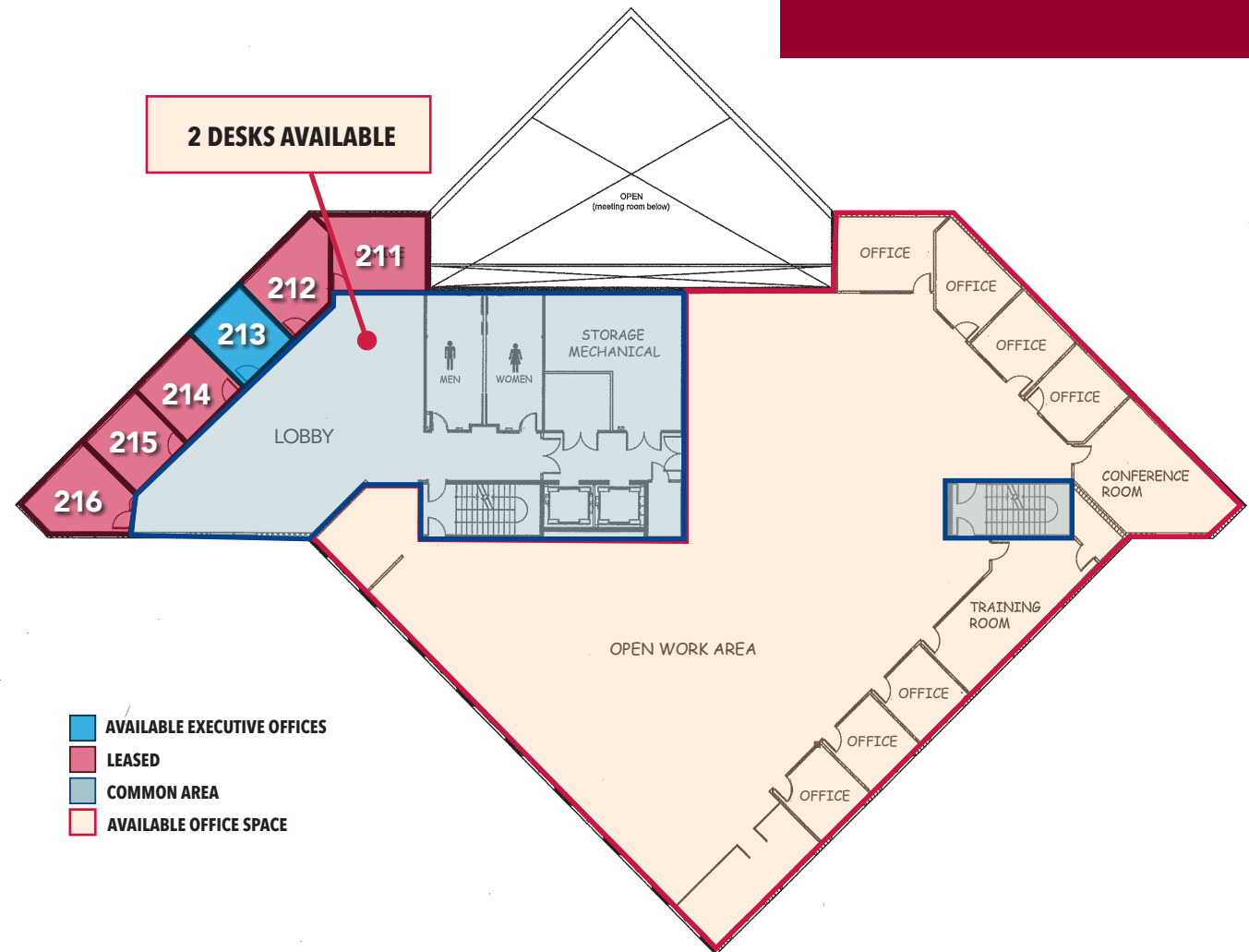
Suite 212: 172± SF **LEASED**

Suite 213: 148± SF **AVAILABLE**

Suite 214: 172± SF **LEASED**

Suite 215: 161± SF **LEASED**

Suite 216: 187± SF **LEASED**



DAN DROTOS, MSRE, SIOR, CCIM
352.420.9889
ddrotos@lee-associates.com

LAUREN VAZQUEZ, SIOR
352.222.4590
lvazquez@lee-associates.com

RORY CAUSSEAU, P.E.
352.317.6341
rcausseau@lee-associates.com

LEE & ASSOCIATES
COMMERCIAL REAL ESTATE SERVICES

SECOND FLOOR

13,498± SF



DAN DROTOS, MSRE, SIOR, CCIM
352.420.9889
ddrotos@lee-associates.com

LAUREN VAZQUEZ, SIOR
352.222.4590
lvazquez@lee-associates.com

RORY CAUSSEUX, P.E.
352.317.6341
rcausseux@lee-associates.com

 **LEE & ASSOCIATES**
COMMERCIAL REAL ESTATE SERVICES

THIRD FLOOR

5,895± SF

The third floor has 5,895± SF of executive office space and is flooded with natural light. On this floor, there is a small waiting area, open office work area with height adjustable workstations, copy area, nine private offices, two large executive offices, a conference room, kitchen area and restrooms.

3RD FLOOR LEASE OPTIONS:

Executive Offices:

133± SF to 167± SF

\$500/Month Full Service*

Desks (in open area):

15 available

\$250/Month Full Service*

*Does not include internet, phone or in-suite janitorial

3RD FLOOR EXECUTIVE SUITES:

Suite 303: 133± SF **AVAILABLE**

Suite 304: 142± SF **AVAILABLE**

Suite 310: 142± SF **AVAILABLE**

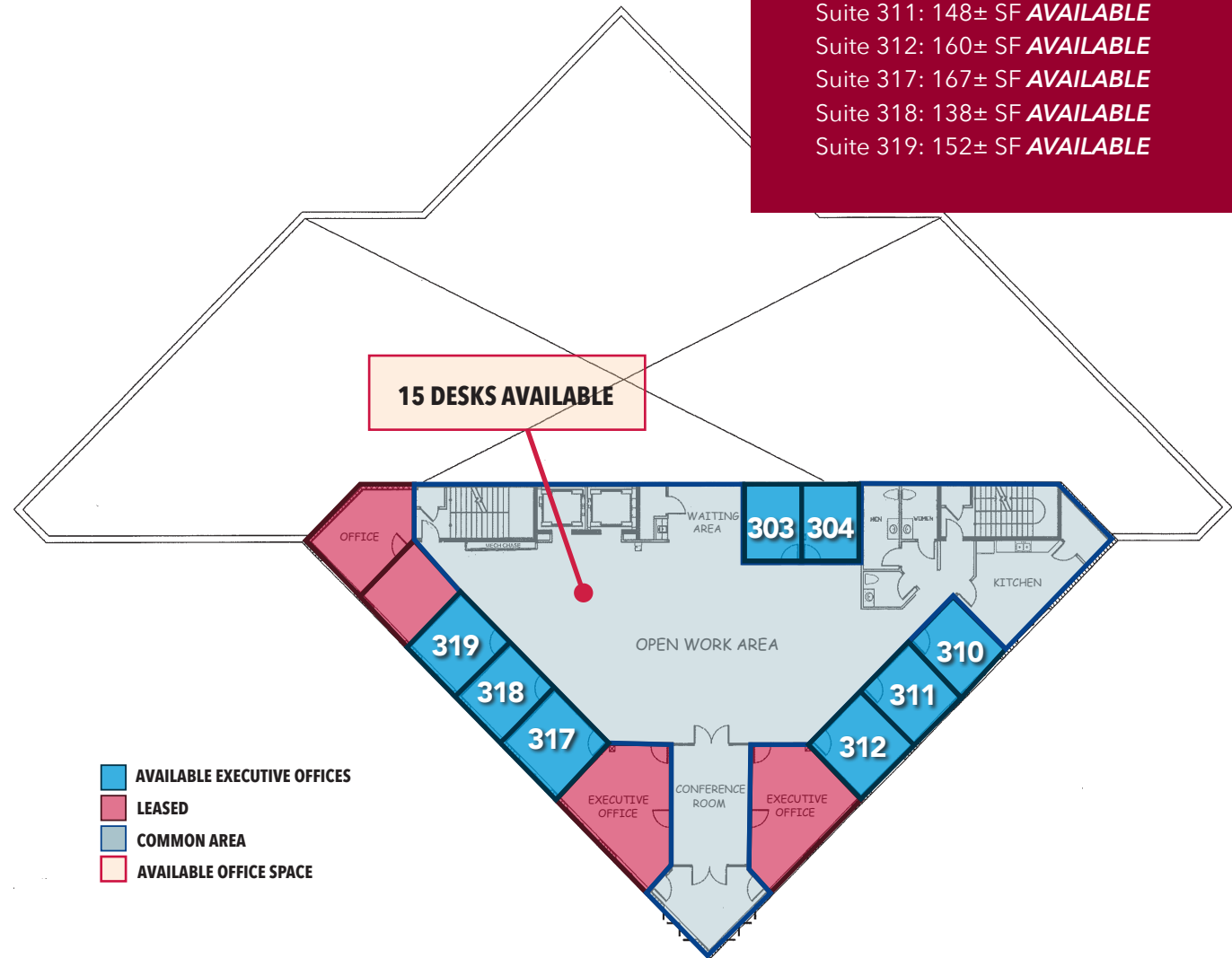
Suite 311: 148± SF **AVAILABLE**

Suite 312: 160± SF **AVAILABLE**

Suite 317: 167± SF **AVAILABLE**

Suite 318: 138± SF **AVAILABLE**

Suite 319: 152± SF **AVAILABLE**



DAN DROTOS, MSRE, SIOR, CCIM
352.420.9889
ddrotos@lee-associates.com

LAUREN VAZQUEZ, SIOR
352.222.4590
lvazquez@lee-associates.com

RORY CAUSSEAU, P.E.
352.317.6341
rcausseau@lee-associates.com

LEE & ASSOCIATES
COMMERCIAL REAL ESTATE SERVICES

THIRD FLOOR

5,895± SF



DAN DROTOS, MSRE, SIOR, CCIM
352.420.9889
ddrotos@lee-associates.com

LAUREN VAZQUEZ, SIOR
352.222.4590
lvazquez@lee-associates.com

RORY CAUSSEUX, P.E.
352.317.6341
rcausseux@lee-associates.com

LEE & ASSOCIATES
COMMERCIAL REAL ESTATE SERVICES

PROPERTY AERIAL

6901 SW 24th Ave, Gainesville, FL 32607



DAN DROTOS, MSRE, SIOR, CCIM
352.420.9889
ddrotos@lee-associates.com

LAUREN VAZQUEZ, SIOR
352.222.4590
lvazquez@lee-associates.com

RORY CAUSSEAU, P.E.
352.317.6341
rcausseau@lee-associates.com

LEE & ASSOCIATES
COMMERCIAL REAL ESTATE SERVICES

OFFICE SPACE & EXECUTIVE SUITES FOR LEASE

6901 SW 24th Ave, Gainesville, FL 32607



2ND FLOOR | 10,875± RSF | \$15/SF NNN

2ND & 3RD FLOOR | EXECUTIVE SUITES | \$500/MONTH FULL SERVICE*

2ND & 3RD FLOOR | DESKS | \$250/MONTH FULL SERVICE*

**DOES NOT INCLUDE INTERNET, PHONE OR IN-SUITE JANITORIAL*

DAN DROTOS, MSRE, SIOR, CCIM

President & Managing Principal

352.420.9889

ddrotos@lee-associates.com

LAUREN VAZQUEZ, SIOR

Vice President

352.222.4590

lvazquez@lee-associates.com

RORY CAUSSEUX, P.E.

Principal

352.317.6341

rcausseux@lee-associates.com