



Commercial and Industrial Real Estate
Sales and Leasing
Property Management

Joey Betbeze
3345 Halls Mill Road
Mobile, Alabama 36606

Office: 251.476.4111
Cell: 251.554.8145

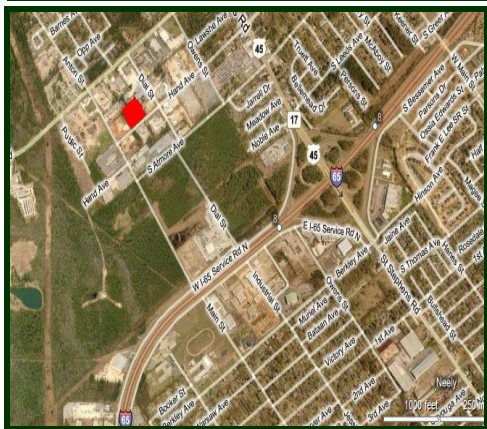
JoeyBetbeze@BetbezeRealty.com
www.BetbezeRealty.com

WAREHOUSE FOR LEASE

**3019 Hand Avenue
Prichard, Alabama 36610**



Approximately 12,800 square foot office and warehouse facility.
700 square feet of office and 12,100 square feet of warehouse.



- 12,800 square foot building.
- Approximately 3/4 acres site.
- Three phase Power.
- 20' eave height.
- 3—12' x 16' overhead doors.
- Zoned M-1 (Light Industrial)
- Fenced Yard.
- **\$8,550.00/Mo. NNN**



Located approximately one mile from the intersection of Highway 45 and Interstate 65. Ideal location for light manufacturing or wholesale supply company.

The information above has been obtained from sources believed reliable. While we do not doubt its accuracy we have not verified it and make no guarantee, warranty or representation about it. It is your responsibility to independently confirm its accuracy and completeness. Any projections, opinions, assumptions, or estimates used are for example only and do not represent the current or future performance of the property. The value of this transaction to you depends on tax and other factors which should be evaluated by your tax, financial, and legal advisors. You and your advisors should conduct a careful, independent investigation of the property to determine to your satisfaction the suitability of the property for your needs.













