

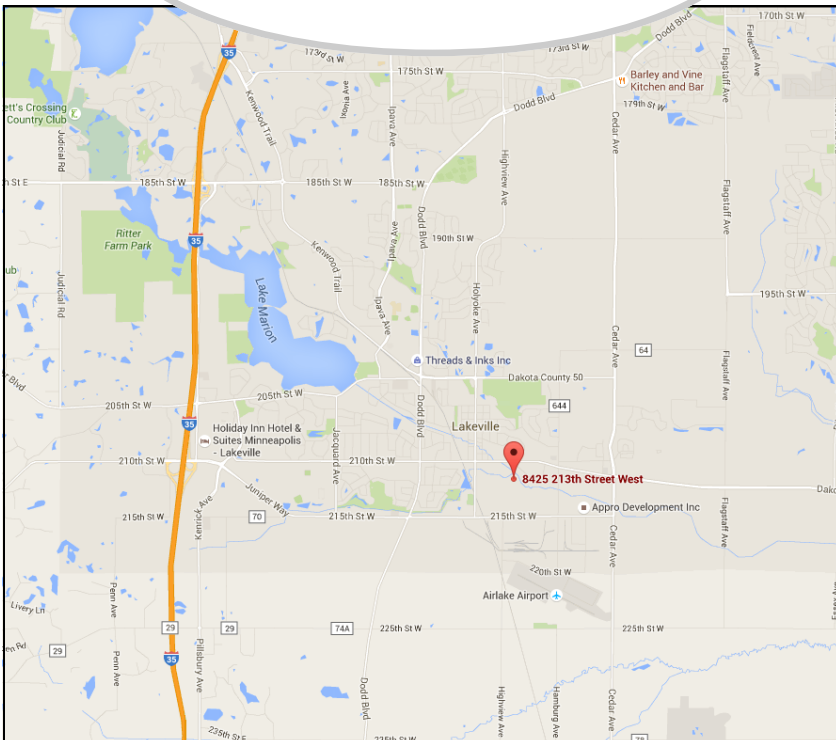


# For Lease

8425 213th Street West, Lakeville, MN 55044



Excellent location with quick access to I-35 or Cedar Avenue (CR-77)



## Office Space For Lease with Truck Parking Available

- ◆ Approx. 2,400 SF Office w-(4) Four Large Offices
- ◆ Open area for cubicles
- ◆ 2nd level office space
- ◆ Bathroom and shower
- ◆ Lease rate: \$2,250/month plus taxes of approx. \$525/month. Heat included. Tenant to pay electric.
- ◆ Truck Parking Available— \$40/month per stall

For more information, contact:

**Bruce Rydeen**  
952.469.9444  
brucer@cerron.com

Visit our website to view this property in more detail or other properties Cerron has available at: [www.CERRON.com](http://www.CERRON.com)

**Creating Property Solutions For You... With You**

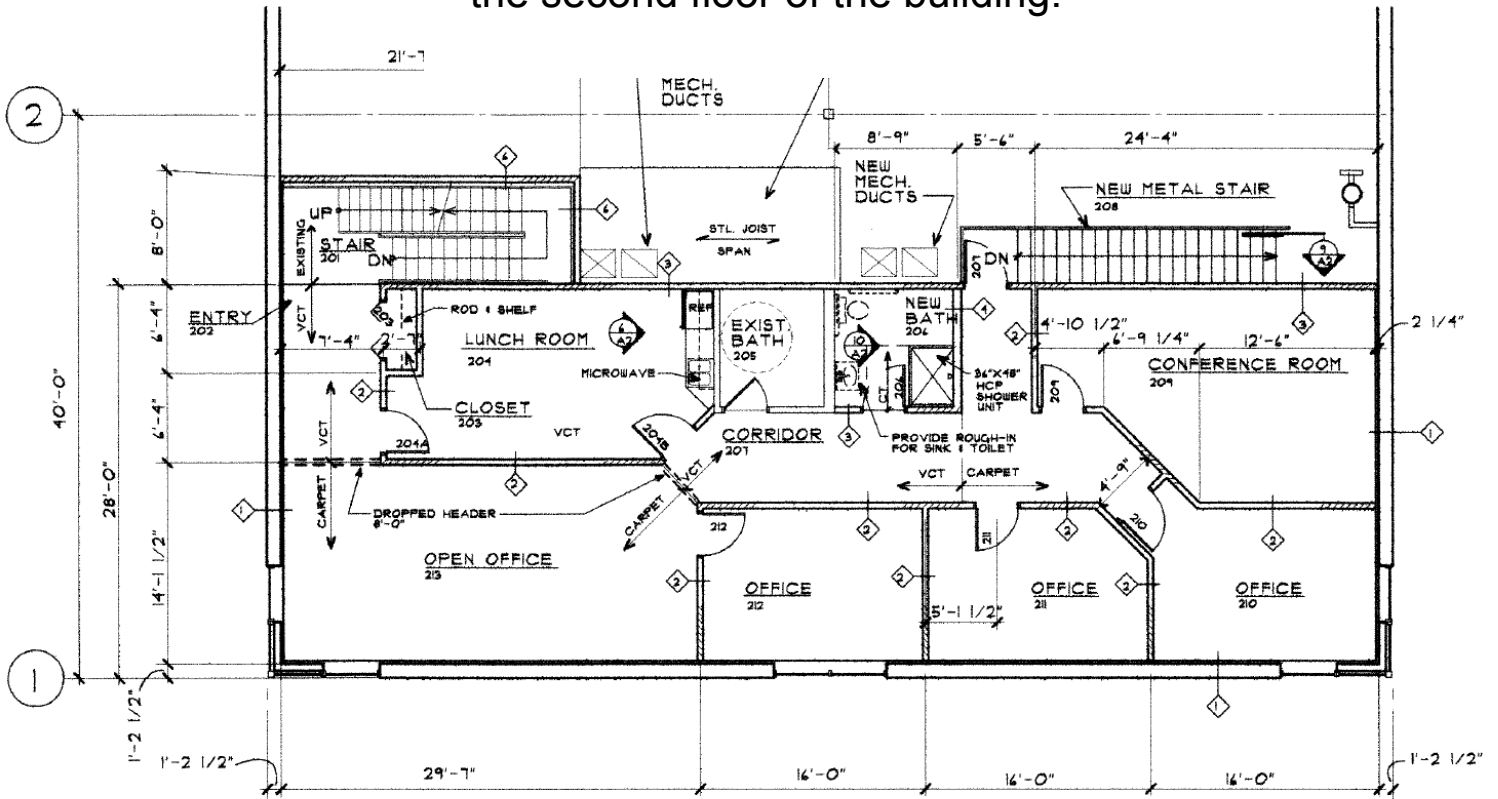
The information contained herein is deemed reliable but is not guaranteed. We have not verified its accuracy nor do we make any warranty or representation about it. You and your tax and legal advisors should conduct your own investigation of the property and transaction.



# Floor Plan/Aerial

8425 213th Street West, Lakeville, MN 55044

Offices available are located on the second floor of the building.



**Creating Property Solutions For You... With You**

The information contained herein is deemed reliable but is not guaranteed. We have not verified its accuracy nor do we make any warranty or representation about it. You and your tax and legal advisors should conduct your own investigation of the property and transaction.