

FOR LEASE

1124 Hartman Lane Shiloh, Illinois 62221



For information, contact:

DAVE KUNKEL

Broker

DAVE@CHOOSEKWG.COM

618.202.4500 OFFICE

618.977.1846 MOBILE

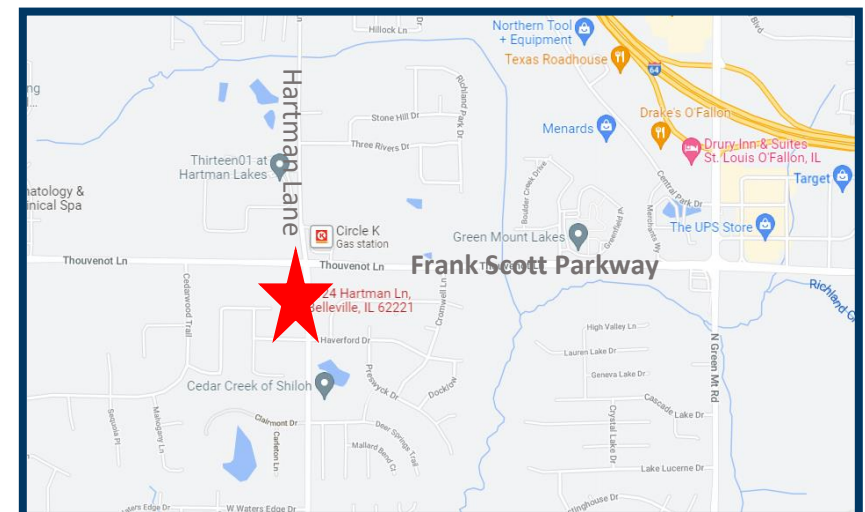
3318 N Illinois Street

Swansea, IL 62226



PROFESSIONAL OFFICE SPACE

- Professional Office Suites Available
- 1,395 SF, 1,500 SF & 1,550 SF Available on lower level
- 1,790 SF Available on main level
- “Passenger Elevator + Stair Access”
- Shared Conference/ Meeting Room
- Professionally Managed Building
- Great location on Hartman Lane, South of Frank Scott Pkwy
- **Lease Rate Lower Level: \$18.00 PSF**
- **Lease Rate First Level: \$22.00 PSF**
- Full-Service Lease - Landlord pays for Taxes, Insurance, Maintenance, and Utilities
- Broker has Ownership Interest
- Call to schedule a property tour!



PHOTOS



1124 Hartman Lane
Shiloh, Illinois 62221



SUITE 100-Main Level

1,790 SF

Waiting Room, IT/Closet,
Printer Room, Three (3) Private
Offices, Large Open Area.

Shared restrooms in common
area.



PHOTOS



1124 Hartman Lane
Shiloh, Illinois 62221



SUITE LL1-Lower Level

1,550 SF

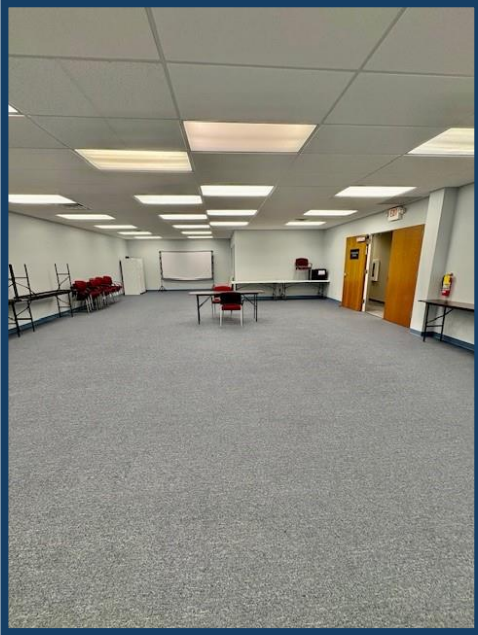
Large Open space with two (2) private offices, conference room and break room.

Shared restrooms in common area hallway.

PHOTOS



1124 Hartman Lane
Shiloh, Illinois 62221



SUITE LL5-Lower Level

1,500 SF

Large open space with one (1) small office.

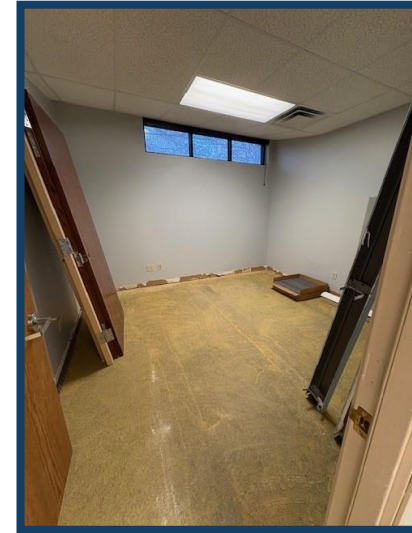
Shared restrooms in common area hallway.



PHOTOS



1124 Hartman Lane
Shiloh, Illinois 62221



SUITE LL4-Lower Level

1,395 SF

Large open space with one (1) private office and break room.

Shared restrooms in common area hallway.

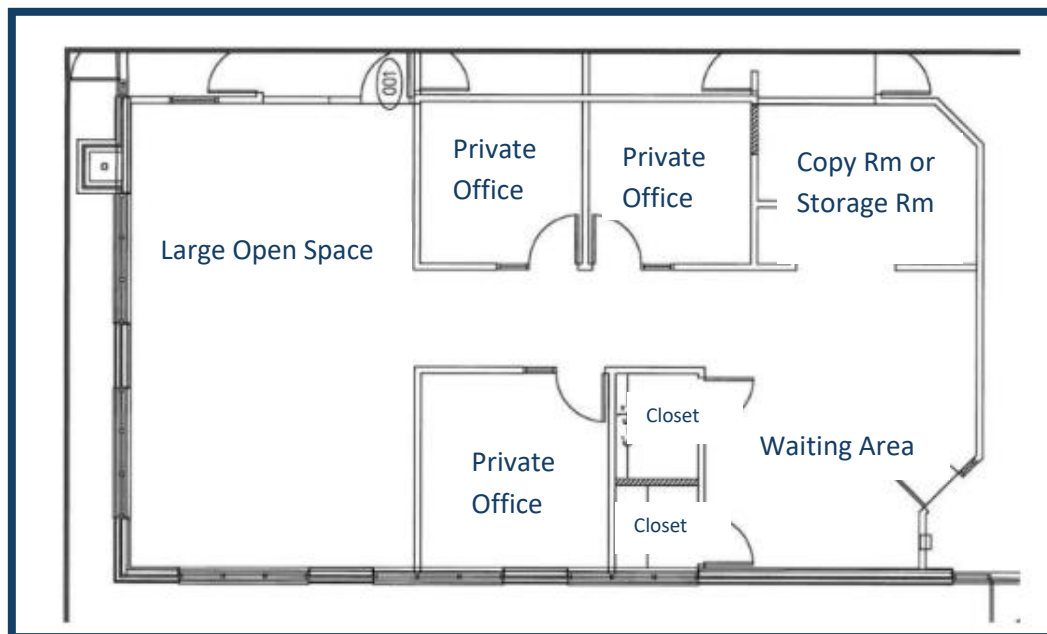
Landlord offering tenant choice of new flooring and paint throughout the suite prior to occupancy.



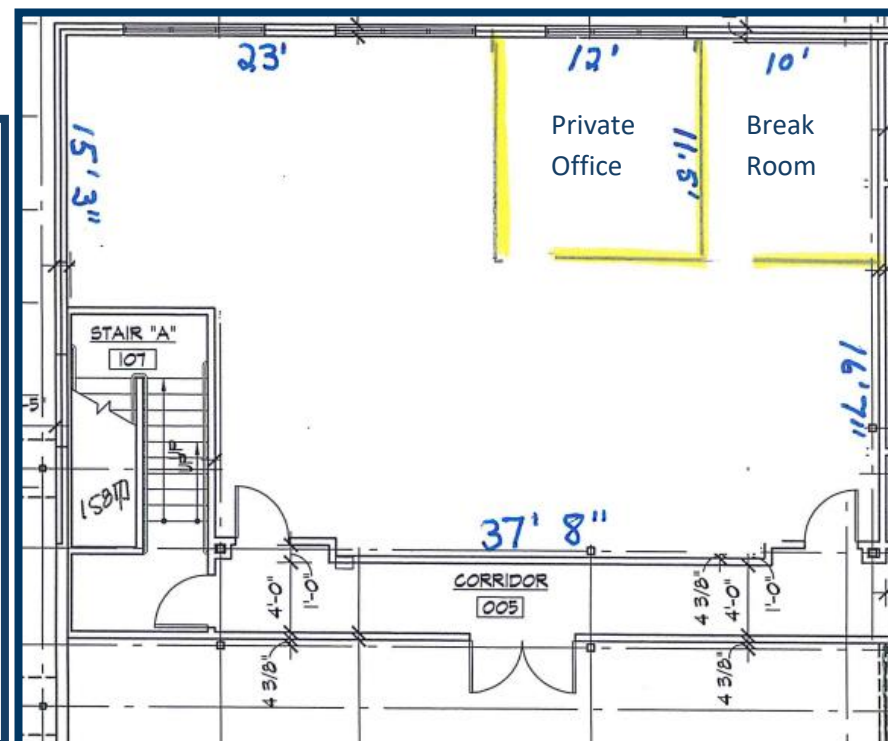
FLOOR PLANS



1124 Hartman Lane
Shiloh, Illinois 62221



1,790 SF (SUITE 100) First Floor



1,395 SF (SUITE LL4) Lower Level