

# FOR SALE

## NORTH JOHNSON COUNTY

### DEVELOPMENT SITE



- 16,055 square feet of land for sale.
- \$235,000.00 sale price.
- Located near Downtown Mission at Shawnee Mission Parkway and Roe.
- Excellent location for an attorney, dentist or wealth advisor.
- Zoned C-O.
- Three miles from the Country Club Plaza.
- Five minutes to I-35.

4716 WEST 60TH STREET  
MISSION, KS 66205

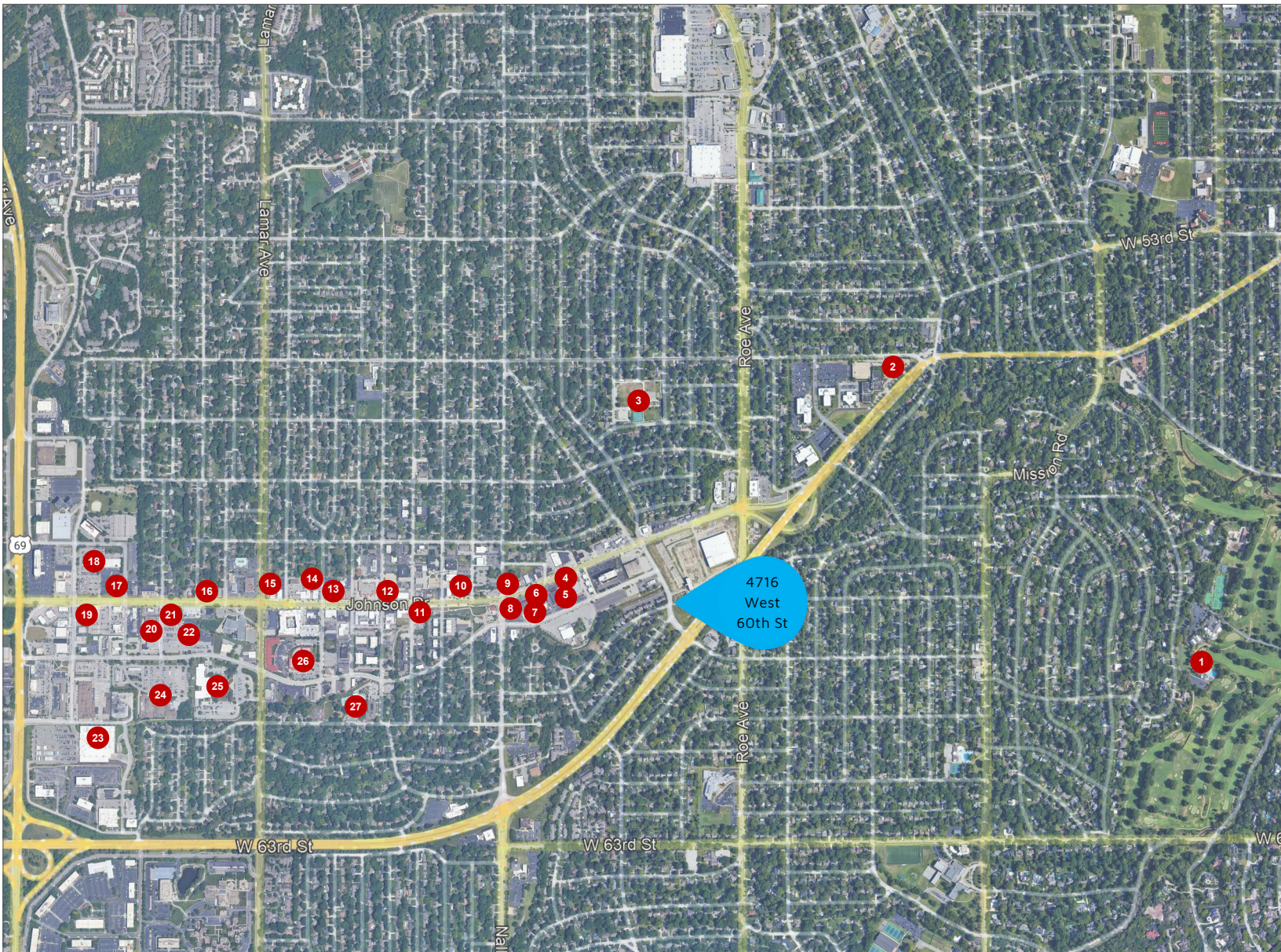


Chuck Connealy, SIOR, CCIM  
Direct: (913) 789-9020  
Cell: (913) 515-6616

[chuck.connealy@waterfordproperty.net](mailto:chuck.connealy@waterfordproperty.net)

Information furnished regarding property is from sources deemed reliable but no warranty or representation is made as to the accuracy thereof and same is submitted subject to errors, omissions, prior sale or lease or withdrawal, without notice.

# AERIAL MAP & AMENITIES



- 1 Kansas City Country Club
- 2 Starbucks
- 3 R Park
- 4 KINZI
- 5 TurnStyles Thrift
- 6 Longboards Wraps and Bowls
- 7 The Peanut
- 8 FedEx Office Print & Ship Center
- 9 Sully's Pub
- 10 Urban Prairie Coffee
- 11 Fluffy Fresh Donuts
- 12 Sushi Karma Asian Bistro & Bar
- 13 The Snack Shack
- 14 Rockcreek Brewing Company

- 15 RJ's Bob-Be-Que
- 16 Starbucks
- 17 Applebee's Bar & Grill
- 18 Jose Pepper's
- 19 Natural Grocers
- 20 Planet Fitness
- 21 Slim Chicken's
- 22 The Other Place
- 23 Target
- 24 Hy-Vee
- 25 Johnson County Motor Vehicle
- 26 Sylvester Powell Community Center
- 27 Mission Family Aquatic Center