



For Lease

1071 Bloomfield Avenue
West Caldwell, NJ



Property Highlights

- 3,680 – 7,962 SF available
- Ample on site parking
- Next door to Stop & Shop
- New ShopRite to be built in 2025 across the street

Financial Information

- Asking rent: Upon request
- Taxes: \$6.05 PSF
- CAM: +/- \$3.56 PSF

Traffic Counts

- Bloomfield Avenue: 19,974 VPD
- Kirkpatrick Lane: 12,917 VPD

Site Aerial

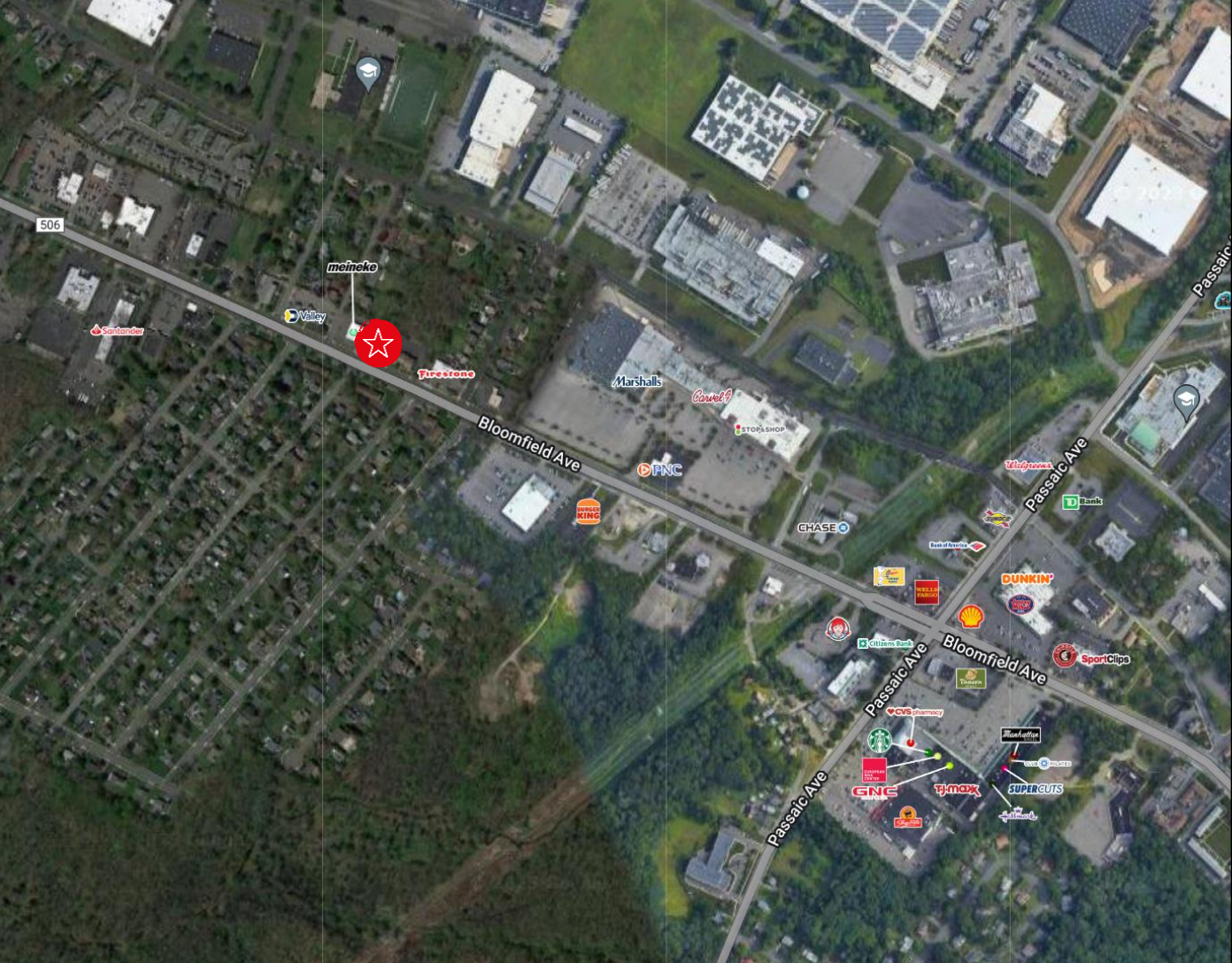


Unit A:
4,062 SF

Unit B:
3,900 SF

Floor Plan (Space B Only)





Demographics



48,956
Population



50,091
Employees



\$123,128
Median
Household
Income



4,449
Businesses

Demographics taken within 3 miles
Source: ESRI, 2022

Contact

Craig Parcels
Vice President
Mobile: +1 201 618 7223
craig.parcels@am.jll.com

Diana Kopac
Licensed Salesperson
Direct: +1 973 829 4783
diana.kopac@am.jll.com



Although information has been obtained from sources deemed reliable, JLL does not make any guarantees, warranties or representations, express or implied, as to the completeness or accuracy as to the information contained herein. Any projections, opinions, assumptions or estimates used are for example only. There may be differences between projected and actual results, and those differences may be material. JLL does not accept any liability for any loss or damage suffered by any party resulting from reliance on this information. If the recipient of this information has signed a confidentiality agreement with JLL regarding this matter, this information is subject to the terms of that agreement. ©2023. Jones Lang LaSalle IP, Inc. All rights reserved.